

NOTICE TO PERSONS RECEIVING THIS DRAWING

THE TECHNICAL MATERIEL CORPORATION claims proprietary right in the material disclosed hereon. This drawing is issued in confidence for engineering information only and may not be reproduced or used to manufacture anything shown hereon without permission from THE TECHNICAL MATERIEL CORPORATION to the user. This drawing is loaned for mutual assistance and is subject to recall at any time.

Property of:

THE TECHNICAL MATERIEL CORPORATION
MAMARONECK, NEW YORK

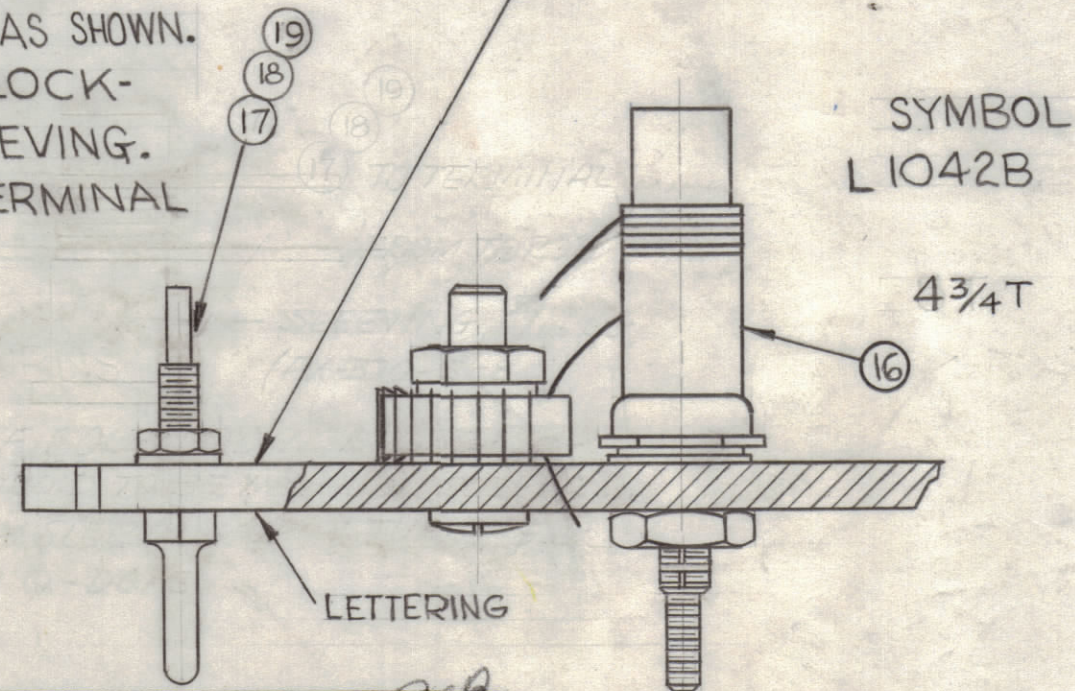
SPOT SOLDER
TERMINAL TO
CAPACITOR.



COMPONENTS TO BE ASSEMBLED
ON REAR OF BOARD, OPPOSITE
SIDE OF LETTERING (SEE LD-1471)

PROCEDURE FOR WINDING TRIM COIL

- 1- PUSH ITEM 16 SLEEVING ON COIL FORM AS SHOWN.
- 2- WIND LONG LEAD FROM TOROID CLOCK-WISE 4 TURNS TIGHTLY AGAINST SLEEVING.
- 3- STRIP ENAMEL FROM END NEAR TERMINAL WRAP AND SOLDER SECURELY TO TERMINAL SHOWN.
- 4- COAT WITH GL-102 Q-MAX. TO HOLD TURNS IN PLACE



REQ.	ITEM	PART NO.	DESCRIPTION	SYMBOL
X	20	GL-102	Q-MAX.	
6	19	NTH0440BNG	NUT, HEXAGON	
6	18	LWS04MRN	WASHER, LOCK, SPRING TYPE	
6	17	TE-191-1	TERMINAL	
X	16	PX-370-2-8	INSULATION, SLEEVING 5/16" LG	
X	15	PX-104-1-034	INSULATION, SLEEVING #20	
X	14	WL-100-6	WIRE, BUSS #20 AWG	
X	13	BS-100	SOLDER, SOFT	
1	12	CM20F561G-03	CAPACITOR, 560MMF	C1148
1	11	CM15F331G-03	CAPACITOR, 330MMF	C1149
1	10	CV-108-3	CAPACITOR, VARIABLE .9-18	C1151
1	9	CM15F910G-03	CAPACITOR, 91MMF	C1150
1	8	CF-134-5-E	COIL, FORM	
1	7	A-3501	COIL, R.F. ASSEMBLY	L1042A
1	6	CM15C100J-03YY	CAPACITOR, 10MMF	C1152
1	5	FW-101-1	WASHER, FLAT, NYLON	
1	4	NT-137-0632	NUT, NYLON	
1	3	SC-143-0632-B-10	SCREW, NYLON	
2	2	TE-104-4	LUG, GROUND	
1	1	LD-1471/PX-650	TERMINAL BOARD, OSC. (LETTERED)	

SYM	ZONE	DESCRIPTION	DATE	CH. NO.	DRAFTS	CHECKER	ENG. APP.
C		ADD. 03 TO IT 9, 11, 12 P/N: IT 6 WAS CM15B100K	3-1-67	17852	RME		
B		IT 10 WAS CV110-3	1-22-65	13337	RZ		
A	B4	ON L1042B 4 3/4 T WAS 4 T	3-10-64	12294	HB		
0		ORIGINAL RELEASE FOR PRODUCTION	2-13-64		641		
X		EXPERIMENTAL RELEASE	3-26-64		641		

SCALE	2:1
UNLESS OTHERWISE SPECIFIED: DIMENSIONS ARE IN INCHES TOLERANCES ON FRACTIONS ± 1/64 DECIMALS ± .005 ANGLES ± 1/2°	
MAXIMUM ALLOWABLE TOLERANCES HAVE BEEN DETERMINED AND ANY DEVIATIONS WILL BE CAUSE FOR REJECTION. REMOVE ALL BURRS & SHARP EDGES	

REQ. PER UNIT	MODEL	SECTION	ASS'Y. NO.	DATE
1	HFR-2			
1	HFR-1A			2-25-64

REQ.	ITEM	PART NO.	DESCRIPTION	SYMBOL
			ANGER	
THE TECHNICAL MATERIEL CORP. MAMARONECK, NEW YORK				
STOCK SIZE				
AX 487 ASS'Y				
(TERMINAL BOARD, OSC. BAND #6)				
MATERIAL				
G.D.L @ RDC				
DRAWN CHECKED FINAL APPROVAL				
ANGER A-3502 C				
FINISH & SPEC. NO. ELEC. DES. APP. MECH. DES. APP. SHEET OF				