

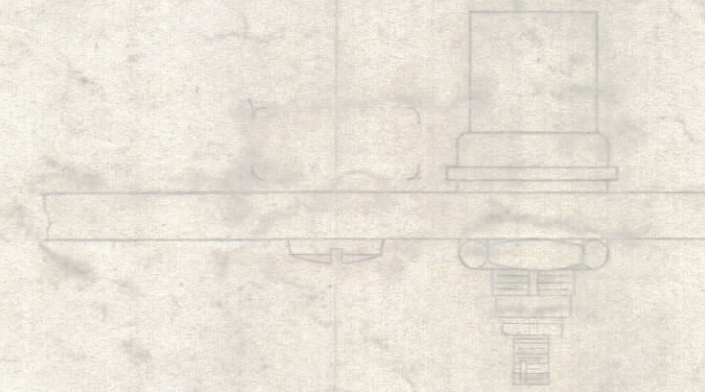
NOTICE TO PERSONS RECEIVING THIS DRAWING

THE TECHNICAL MATERIEL CORPORATION claims proprietary right in the material disclosed hereon. This drawing is issued in confidence for engineering information only and may not be reproduced or used to manufacture anything shown hereon without permission from THE TECHNICAL MATERIEL CORPORATION to the user. This drawing is loaned for mutual assistance and is subject to recall at any time.

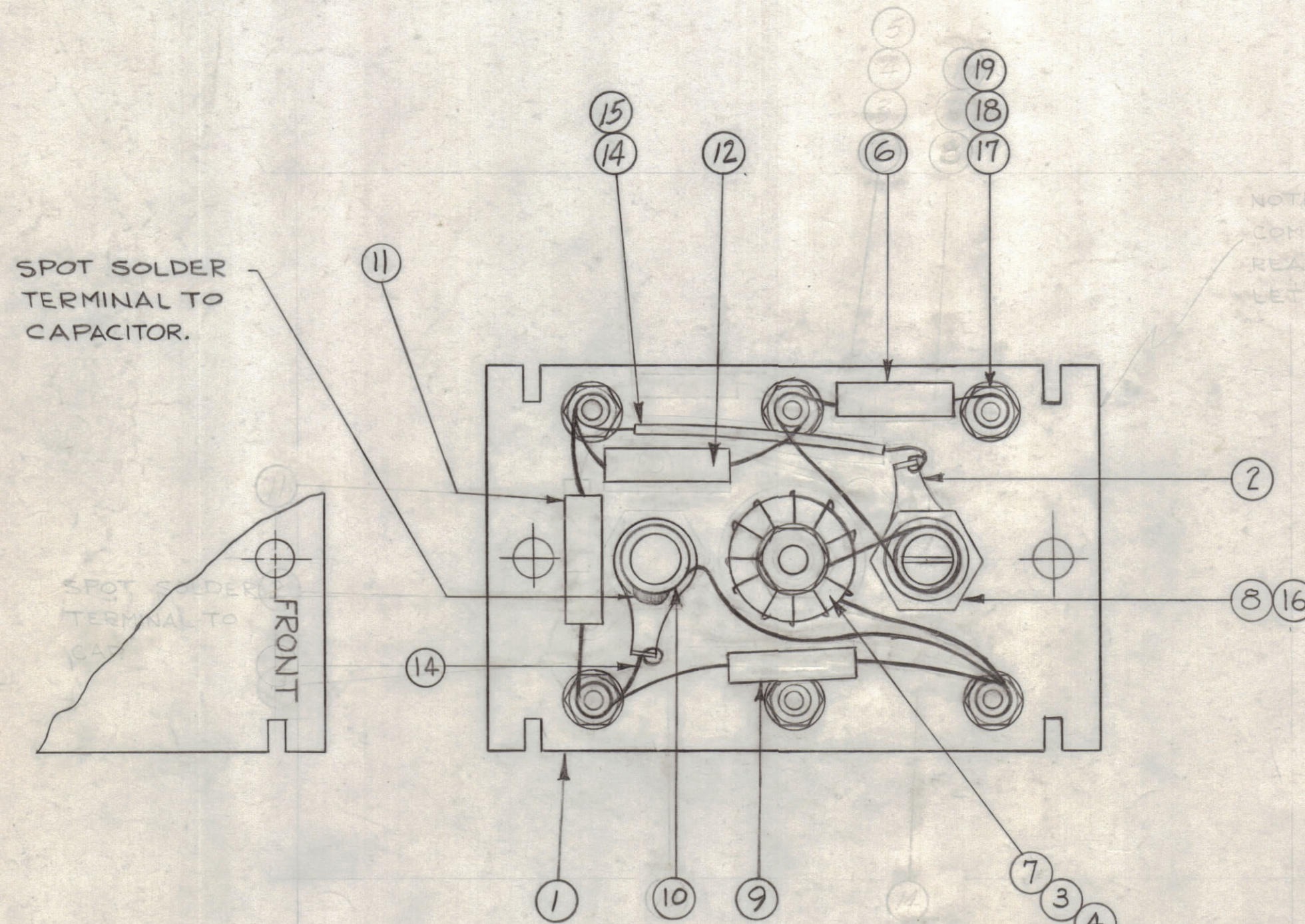
Property of:
THE TECHNICAL MATERIEL CORPORATION
MAMARONECK, NEW YORK

PROCEDURE FOR WINDING TRIM COIL

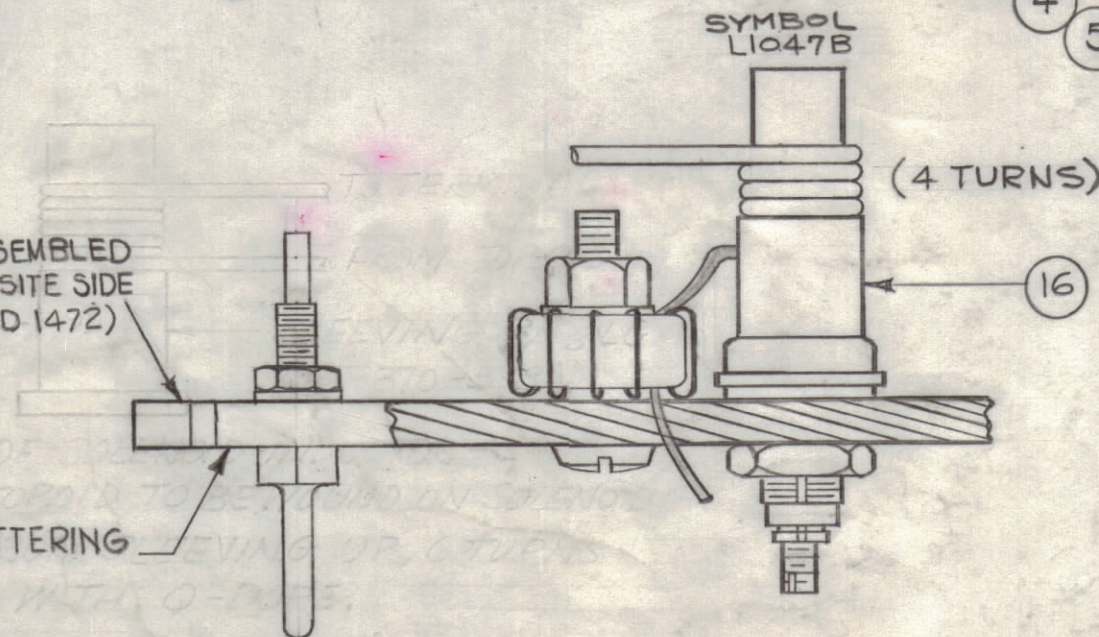
- 1 - PUSH ITEM 16 SLEEVING ON COIL FORM AS SHOWN.
- 2 - WIND LONG LEAD FROM TOROID CLOCKWISE, 4 TURNS TIGHTLY AGAINST SLEEVING.
- 3 - STRIP ENAMEL FROM END NEAR TERMINAL, WRAP & SOLDER SECURELY TO TERMINAL SHOWN.
- 4 - COAT WITH GLI02, Q MAX. TO HOLD TURNS IN PLACE.



NOTE:
COMPONENTS TO BE ASSEMBLED ON REAR OF BOARD, OPPOSITE SIDE OF LETTERING. (SEE LD 1472)



NOTE:
COMPONENTS TO BE ASSEMBLED ON REAR OF BOARD, OPPOSITE SIDE OF LETTERING. (SEE LD 1472)



REQ.	ITEM	PART NO.	DESCRIPTION	SYMBOL
X	20	GL 102	Q-MAX	
6	19	NTH0440BN6	NUT, HEX	
6	18	LWS04MRN	WASHER, LOCK, SPRING TYPE	
6	17	TE-191-1	TERMINAL	
X	16	PX 370-2-8	INSULATION, SLEEVING, 5/16 LG.	
X	15	PX 104-1-034	INSULATION, SLEEVING	
X	14	WL 100-6	WIRE, BUSS, #20 AWG.	
X	13	BS 100	SOLDER, SOFT	
1	12	CM15F221G03	CAPACITOR, 220 MMF	C1169
1	11	CM15G750G03	CAPACITOR, 75 MMF	C1170
1	10	CV 108-2	CAPACITOR, VARIABLE .9-12	C1172
1	9	CM15C270J03	CAPACITOR, 27 MMF	C1171
1	8	CF 134-5-0	COIL FORM	
1	7	A-3503	COIL, RF, ASSEMBLY	L1047A
1	6	CM15C050J03Y	CAPACITOR, 5 MMF	C1173
1	5	FW 101-1	WASHER, FLAT, NYLON	
1	4	NT 137-0632	NUT, NYLON	
1	3	SC 143-0632-B-10	SCREW, NYLON	
2	2	TE 104-4	LUG, GROUND	
1	1	LD 1472/PX 650	TERMINAL BOARD, OSC. (LETTERED)	

REQ.	ITEM	PART NO.	DESCRIPTION	SYMBOL
THE TECHNICAL MATERIEL CORP. MAMARONECK, NEW YORK AX 488 ASS'Y TERMINAL BOARD, OSC. BAND #7)				
G.D.L @ RDC				
DRAWN		CHECKED		FINAL APPROVAL
J. Jager				
ELEC. DES. APP.		MECH. DES. APP.		SHEET OF
				A 3504 B

SYM.	ZONE	DESCRIPTION	DATE	CH. NO.	DRAFTS	CHECKER	ENG. APP.
B		ADD -03 TO IT9, 11, 12, PIN - IT6 WAS CM15B050M	3-1-67	17852	RME		
A		IT 10 PIN WAS CV110-2	1-22-65	13337	9Z		
0		ORIGINAL RELEASE FOR PRODUCTION	8-13-64				
X		EXPERIMENTAL RELEASE	3-26-64				

UNLESS OTHERWISE SPECIFIED:
DIMENSIONS ARE IN INCHES
TOLERANCES ON
FRACTIONS ± 1/64 DECIMALS ± .005 ANGLES ± 1/2°

SCALE 2:1

MAXIMUM ALLOWABLE TOLERANCES HAVE BEEN DETERMINED AND ANY DEVIATIONS WILL BE CAUSE FOR REJECTION. REMOVE ALL BURRS & SHARP EDGES

REQ. PER UNIT	MODEL	SECTION	ASS'Y. NO.	DATE
1	HFR-2			
1	HFR-1A			2-25-64