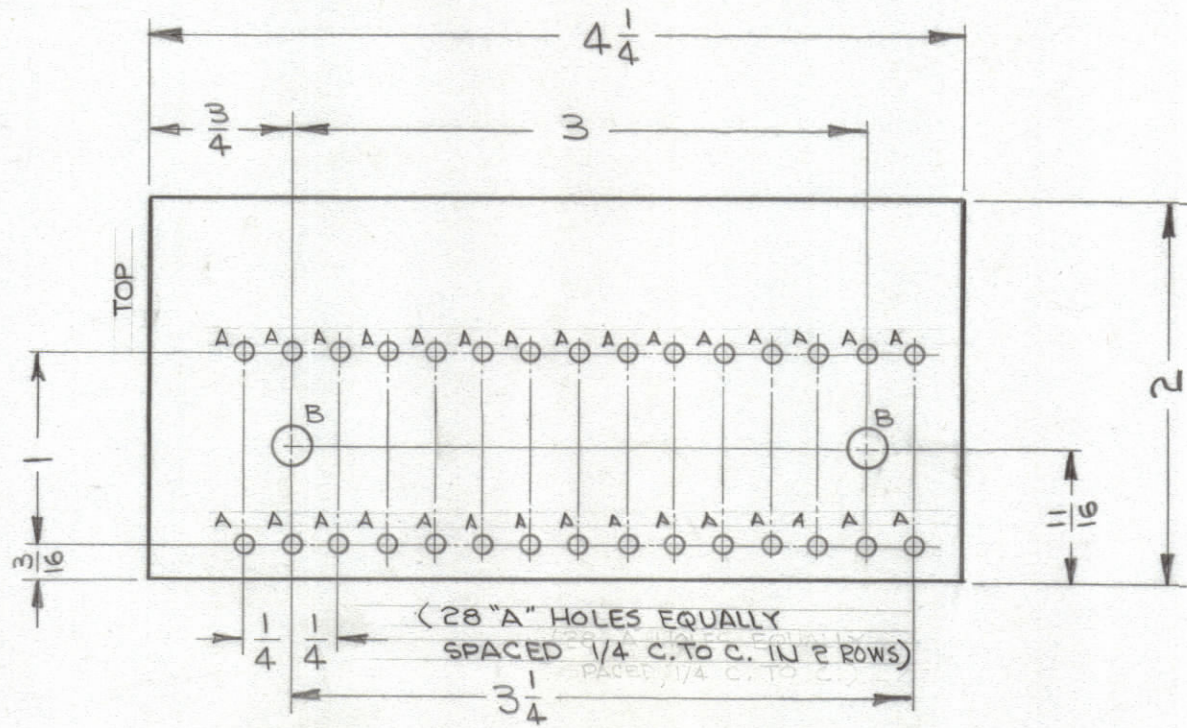


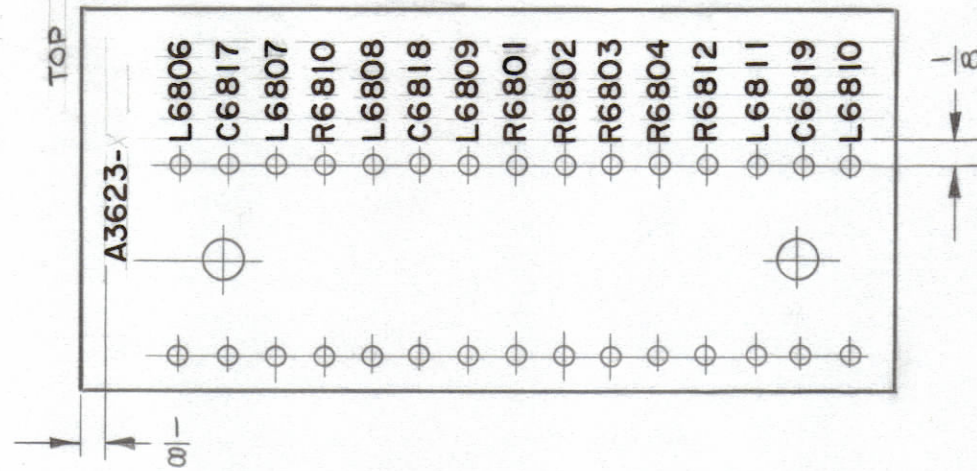
LEGEND		
HOLE	DESCRIPTION	REQ
A	.078 DIA.	30
B	.189 DIA.	2

REVISIONS							
ZONE	SYM	DESCRIPTION	DATE	E.M.N. NO.	DRAFT	CHKD	APPD
	X	EXPER. RELEASE	4/24/64	1			
B2	X1	ITEM 3 ADDED	7-8-64	2			
	X2	ITEM 9 WAS CMISBS11J ALL RESISTORS WERE "K" TOL	4/65	X2			
	Ø	ORIGINAL RELEASE FOR PRODUCTION	11/65	Ø			

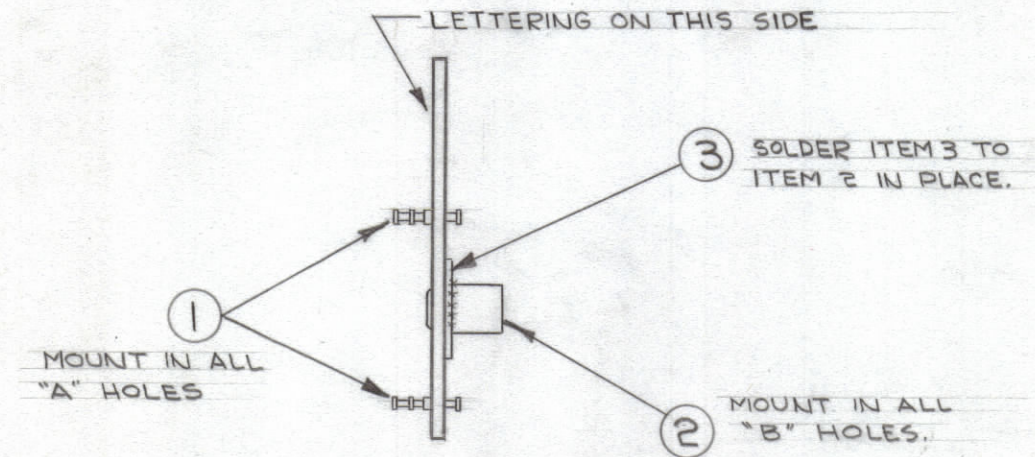
UNLESS OTHERWISE SPECIFIED:  
 MARKING PROCESS: AS PER TMC SPECIFICATION S-727.  
 LETTERING: 1/8 HIGH BLACK GOTHIC, LOCATED AS SHOWN.  
 FUNGUS PROOF PER TMC SPEC S-113, AFTER MARKING PROCESS.  
 MARK TMC PART NO WITH LATEST REVISION LETTER, 1/8 HIGH BLACK GOTHIC.



-MACHINING-(A3623-1)  
 MATERIAL- EPOXY G-10, 1/16 THICK  
 FINISH- NATURAL FUNGUS PR. PER TMC SPEC S-113.

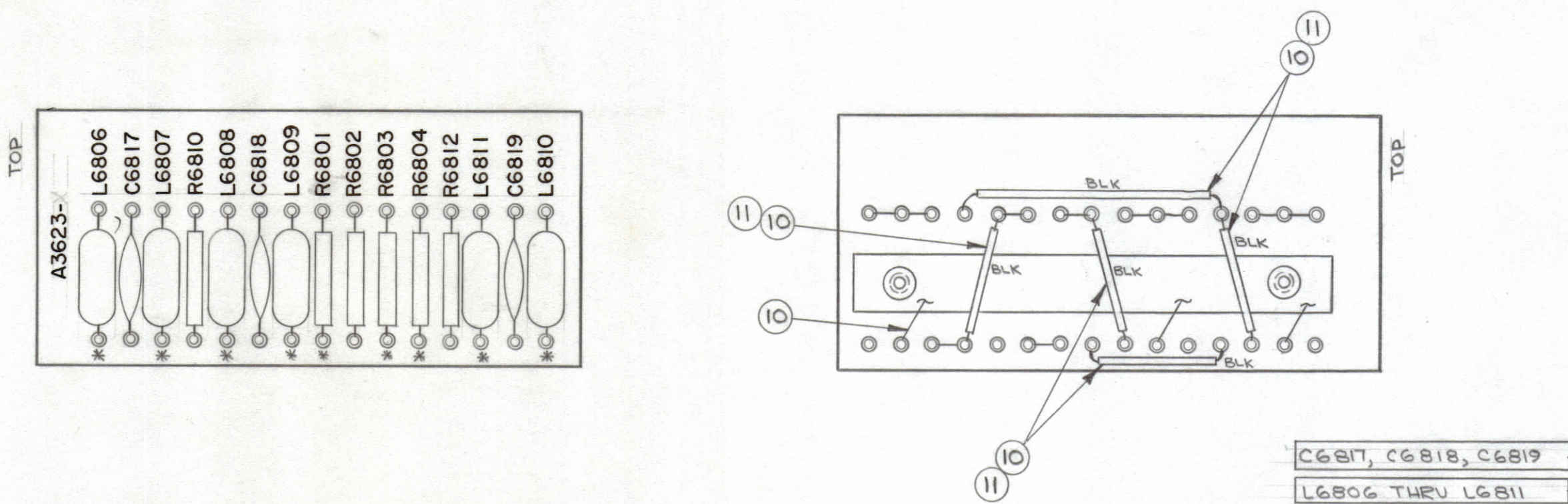


- MARKING-(A3623-2)



- SUB-ASSY-(A3623-3)

- ELECTRICAL ASSY-(A3623-4)



NOTE:  
 1- \* DENOTES DO NOT SOLDER.

REQ'D.	ITEM	PART NUMBER	DESCRIPTION	SYMBOL
X	12	BS100	SOLDER, SOFT	
X	11	PX104-1-034	SLEEVING, INSULATION	
X	10	WL100-6	WIRE, BUSS (#20)	
3	9	CMISF511J03	CAPACITOR, FIXED, MICA	
6	8	CL270-10	COIL, MOLDED	
1	7	RC42GF681.	RESISTOR, FIXED, COMPOSITION	R6804
2	6	RC20GF472J		R6803 R6810
1	5	RC20GF332J		R6812
2	4	RC20GF331J	RESISTOR, FIXED, COMPOSITION	R6801 R6802
1	3	MS202-37-3.750	STRIP, TERMINAL, GROUNDING	B
2	2	TE108-2	STANDOFF, RIVET TYPE	B
30	1	TE168-4-B	TERMINAL, MINIATURE	A

O. POSE		LIST OF MATERIAL	
MATERIAL	SEE MACHINING	THE TECHNICAL MATERIEL CORP. MAMARONECK, NEW YORK	
FINISH	SEE MACHINING	TITLE TERMINAL BOARD ASSY (CHAN "B" AUDIO)	
DRAWN	<i>[Signature]</i>	DATE	4/29/64
CHECKED	<i>[Signature]</i>	DATE	10/26/65
ELECT. DES.	<i>[Signature]</i>	DATE	10/28/65
MECH. DES.	<i>[Signature]</i>	DATE	10/28/65
DECIMALS	.X ± .08 .XX ± .01 .XXX ± .005	FRACTIONS	± 1/64 ANGLES ± 0° 30'
UNLESS OTHERWISE SPECIFIED DIMENSIONS ARE IN INCHES AND INCLUDE CHEMICALLY APPLIED OR PLATED FINISHES		REV. LTR.	Ø

QTY./UNIT	MODEL USED ON	ASSY. NO.
1	SBS-74	A2874
SCALE	CODE	
1:1	A	

NOTES

THE CONTENTS OF THIS DRAWING ARE THE EXCLUSIVE PROPERTY OF THE TECHNICAL MATERIEL CORP. ITS UNAUTHORIZED USE OR REPRODUCTION IN WHOLE OR IN PART IS STRICTLY FORBIDDEN.

A3623  
 Ø