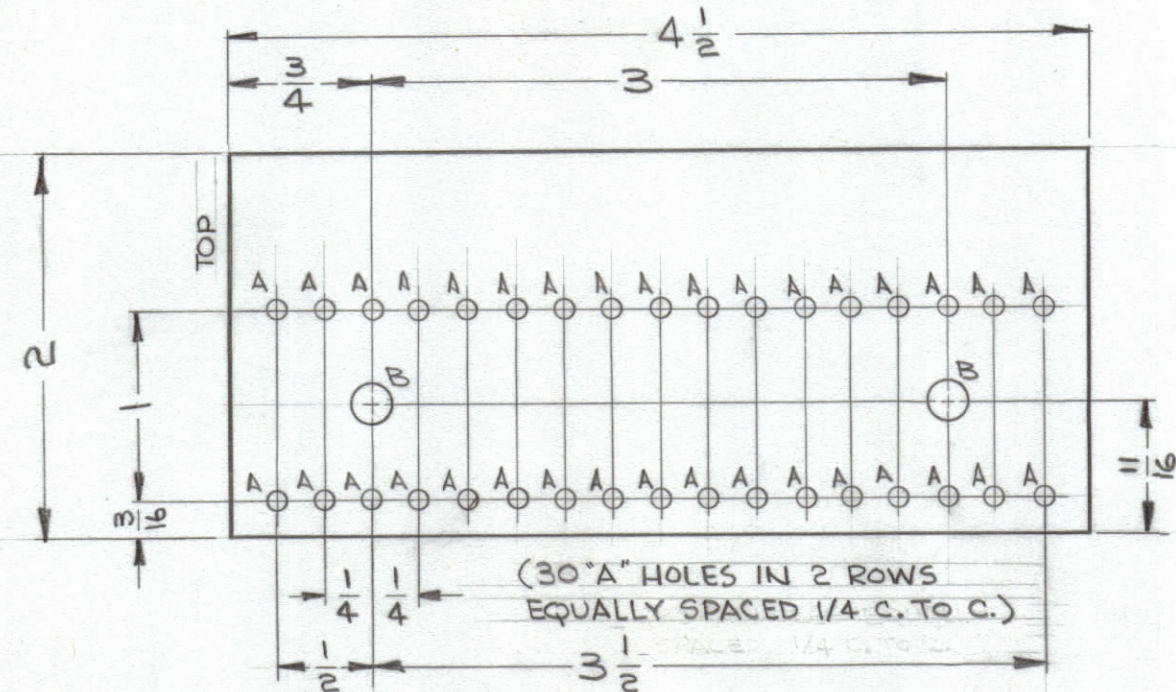


LEGEND		
HOLE	DESCRIPTION	REQ
A	.078 DIA.	34
B	.189 DIA.	2

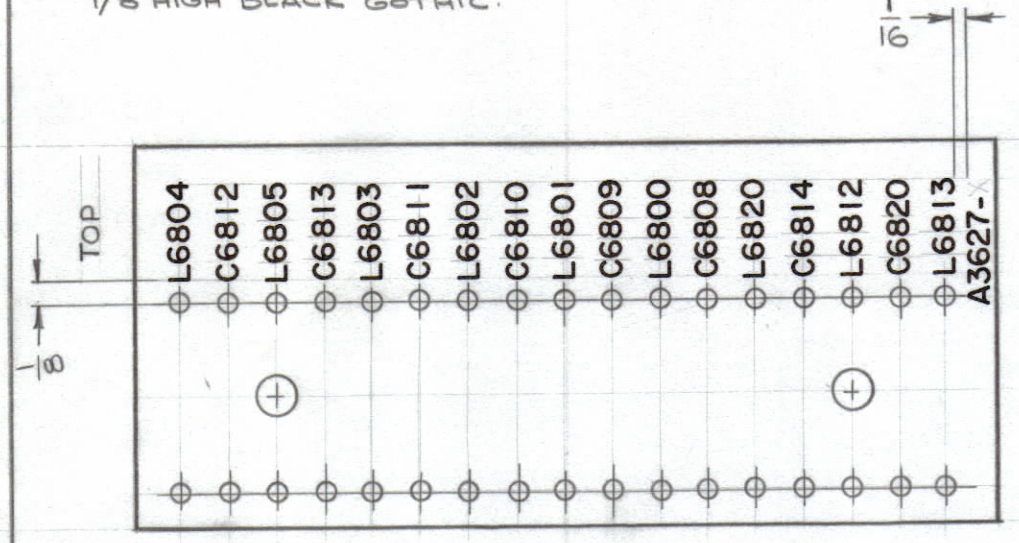
UNLESS OTHERWISE SPECIFIED:
 MARKING PROCESS: AS PER TMC SPECIFICATION S-727.
 LETTERING: 1/8 HIGH BLACK GOTHIC, LOCATED AS SHOWN.
 FUNGUS PROOF PER TMC SPEC S-113, AFTER MARKING PROCESS.
 MARK TMC PART NO WITH LATEST REVISION LETTER 1/8 HIGH BLACK GOTHIC.

REVISIONS							
ZONE	SYM	DESCRIPTION	DATE	E.M.N. NO.	DRAFT	CHKD	APPD
	X	EXPER RELEASE	4-30-64	1			
B2	X1	ITEM 3 ADDED	1-5-64	2			
	Ø	ORIGINAL RELEASE FOR PRODUCTION	11-3-65			S.D.L.	

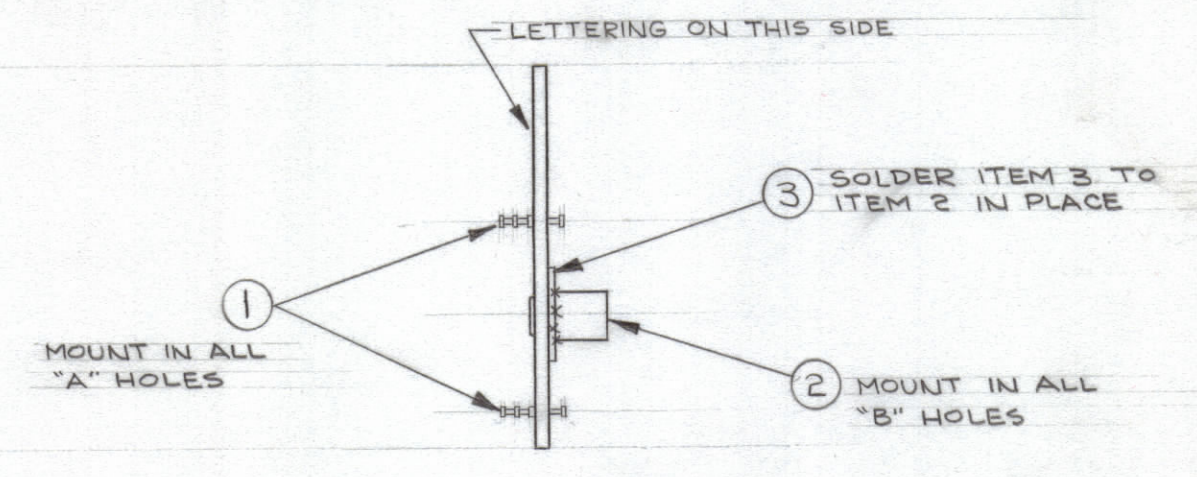


- MACHINING - (A3627-1)

MATERIAL - EPOXY 16-10, 1/16 THICK
 FINISH - NATURAL - FUNGUS PROOF PER TMC SPEC S-113

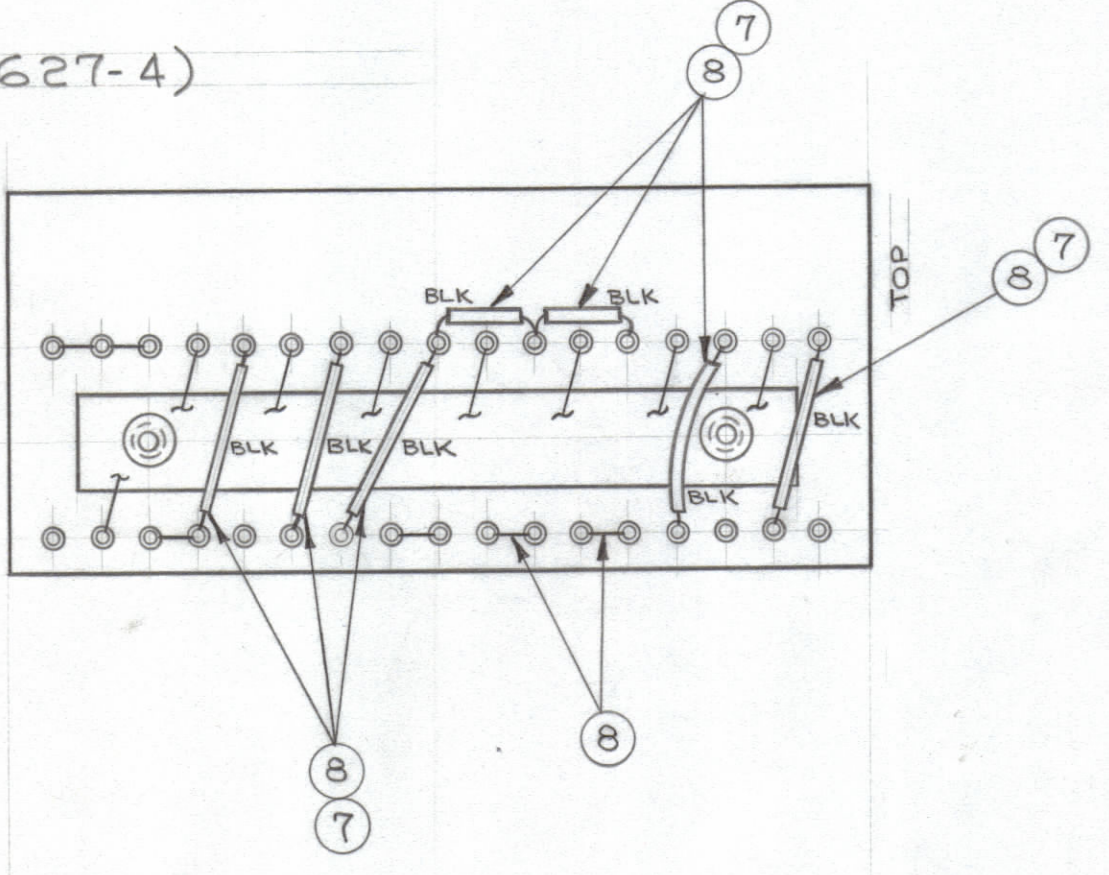
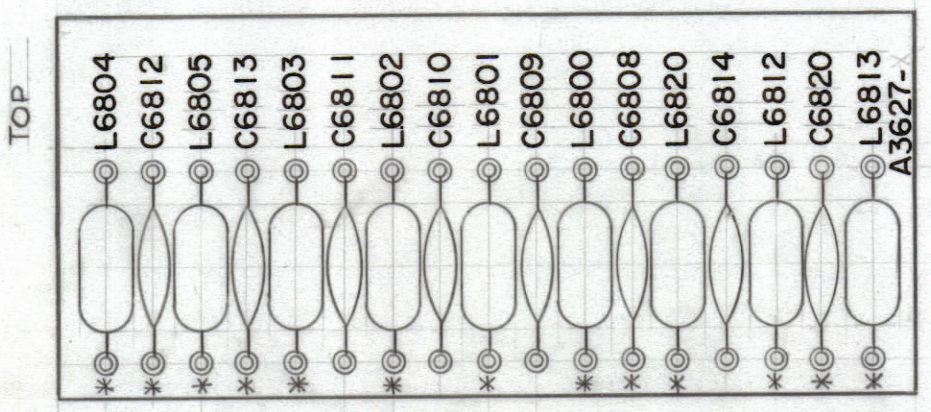


- MARKING - (A3627-2)



- SUB-ASSY - (A3627-3)

- ELECTRICAL ASSY - (A3627-4)



L6800 THRU L6805, L6812, L6813, L6820
 C6808 THRU C6811, C6813
 C6812, C6814, C6820

NOTE:
 * DENOTES DO NOT SOLDER

REQ'D.	ITEM	PART NUMBER	DESCRIPTION	SYMBOL
X	9	BS100	SOLDER, SOFT	
X	8	WL100-6	WIRE, BUSS (#20)	
X	7	PX104-1-034	SLEEVING, INSULATION	
9	6	CL140-1	COIL, MOLDED	
5	5	CC100-37	CAPACITOR, FIXED, CERAMIC	
3	4	CC100-16	CAPACITOR, FIXED, CERAMIC	
1	3	MS202-37-3.750	STRIP, TERMINAL, GROUNDING	B
2	2	TE108-2	STANDOFF, RIVET TYPE	B
34	1	TE168-4-B	TERMINAL, MINIATURE	A

O. POSE LIST OF MATERIAL			
MATERIAL	DESCRIPTION	DATE	REVISION
SEE MACHINING	SEE MACHINING		
SEE MACHINING	SEE MACHINING		
UNLESS OTHERWISE SPECIFIED	DIMENSIONS ARE IN INCHES AND INCLUDE		
CHEMICALLY APPLIED OR PLATED FINISHES			
DECIMALS	FRACTIONS		
.X ± .05	± 1/64		
.XX ± .01	ANGLES		
.XXX ± .005	± 0° 30'		

Q'TY./UNIT	MODEL USED ON	ASS'Y. NO.
1	SBS-7	A2874
SCALE	CODE	
1:1	A	

NOTES

THE TECHNICAL MATERIEL CORP.			
MAMARONECK, NEW YORK			
TITLE			
TERMINAL BOARD ASSEMBLY (B + BOARD)			
DRAWN	DATE	FINAL APPROVAL	DATE
<i>G. Jensen</i>	4-30-64	<i>AM</i>	11/3/65
CHECKED	DATE		
<i>QTB</i>	11/3/65		
ELECT. DES.	DATE		
<i>SD</i>	11/3/65		
MECH. DES.	DATE		

A3627