

HOLE	DESCRIPTION	REQ.
A	.078 DIA	40
B	5/32 DIA	2

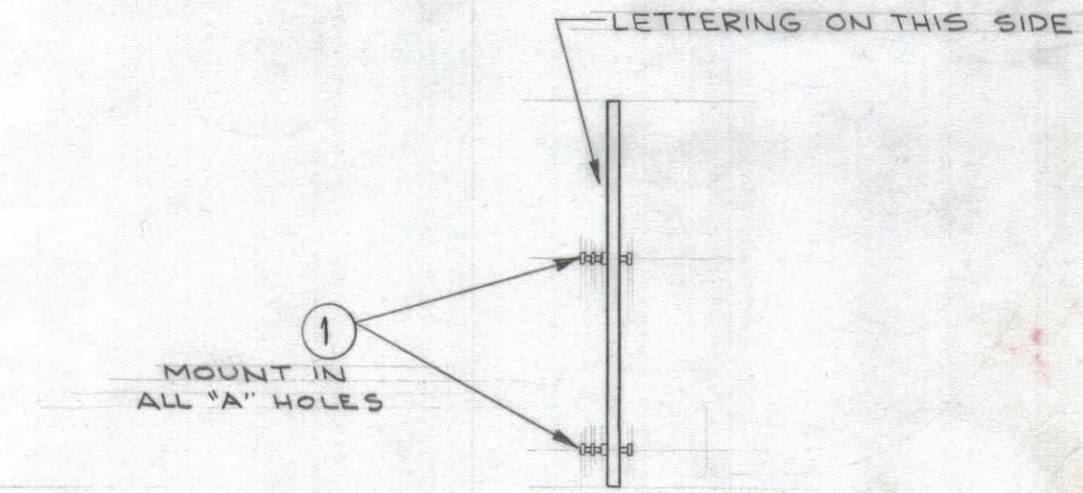
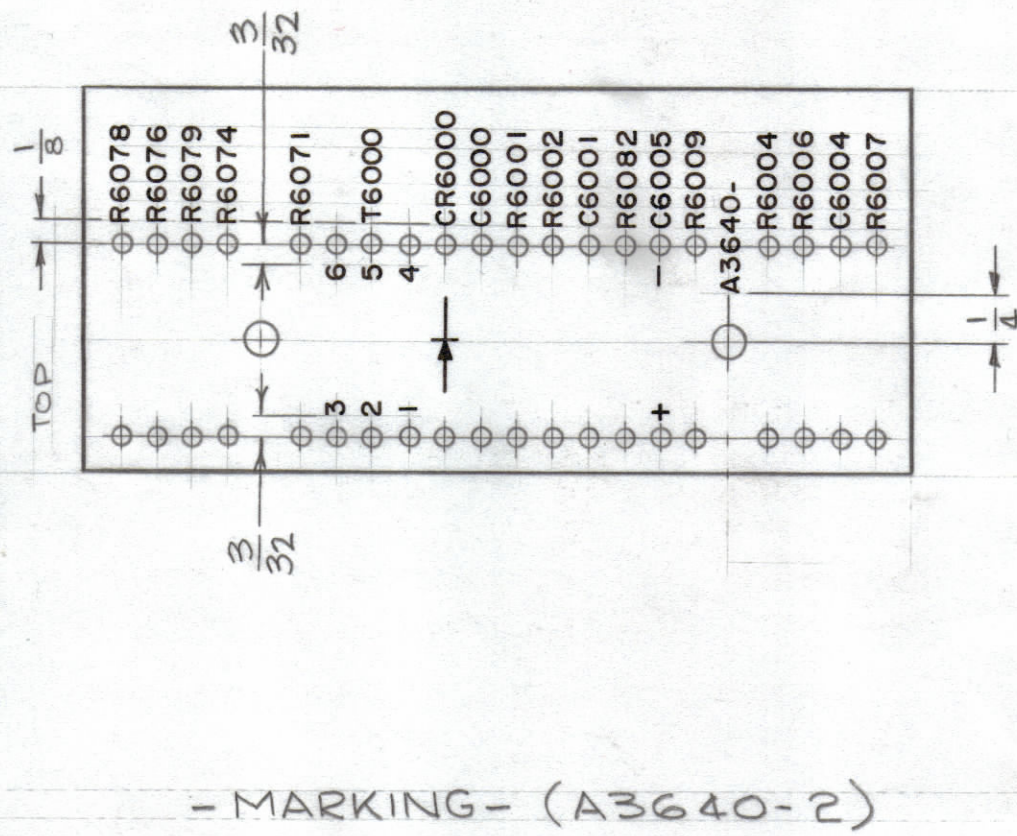
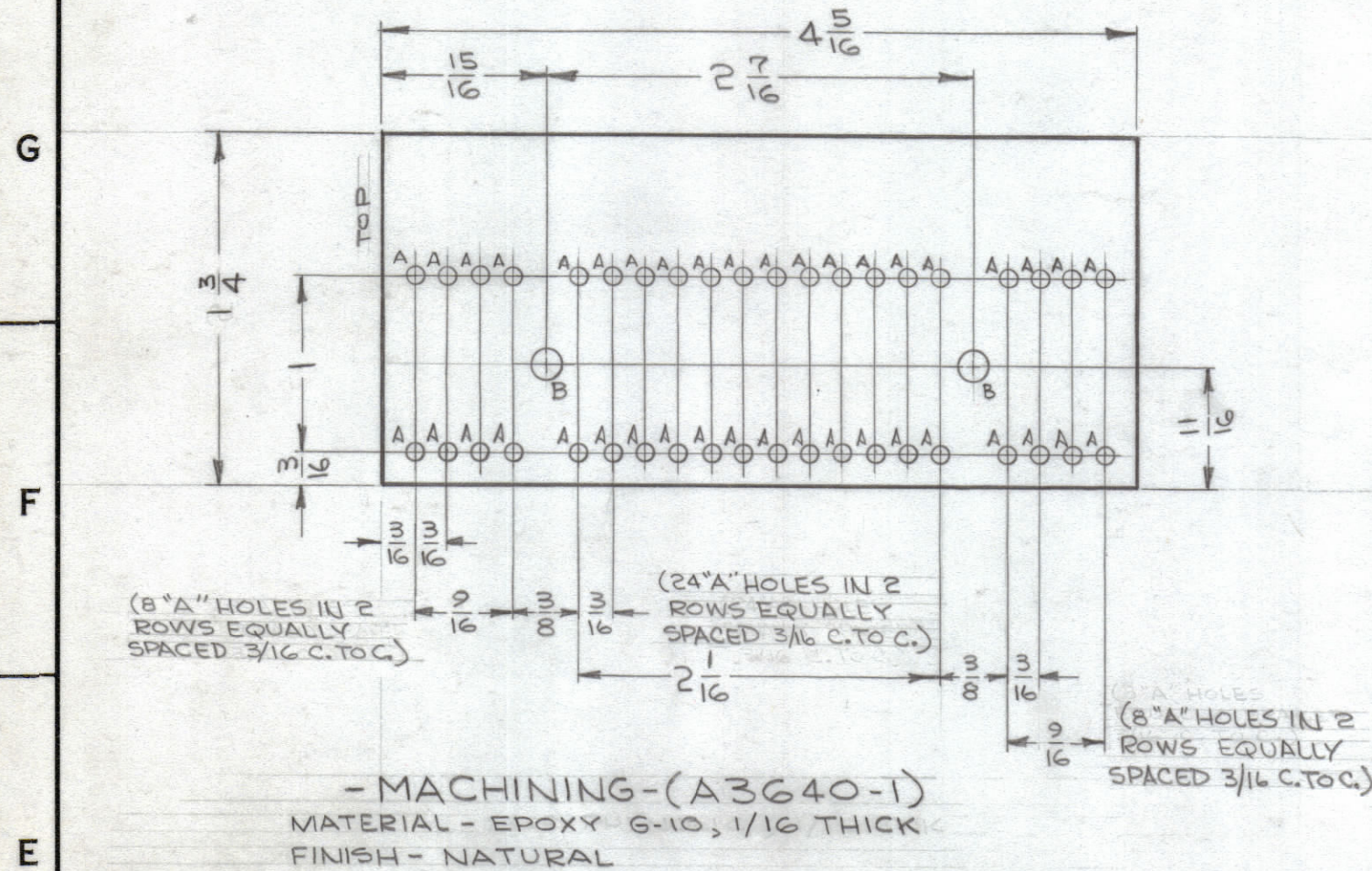
MARKING PROCESS: AS PER TMC SPECIFICATION S-727.

LETTERING: 3/32 HIGH BLACK GOTHIC, LOCATED AS SHOWN.

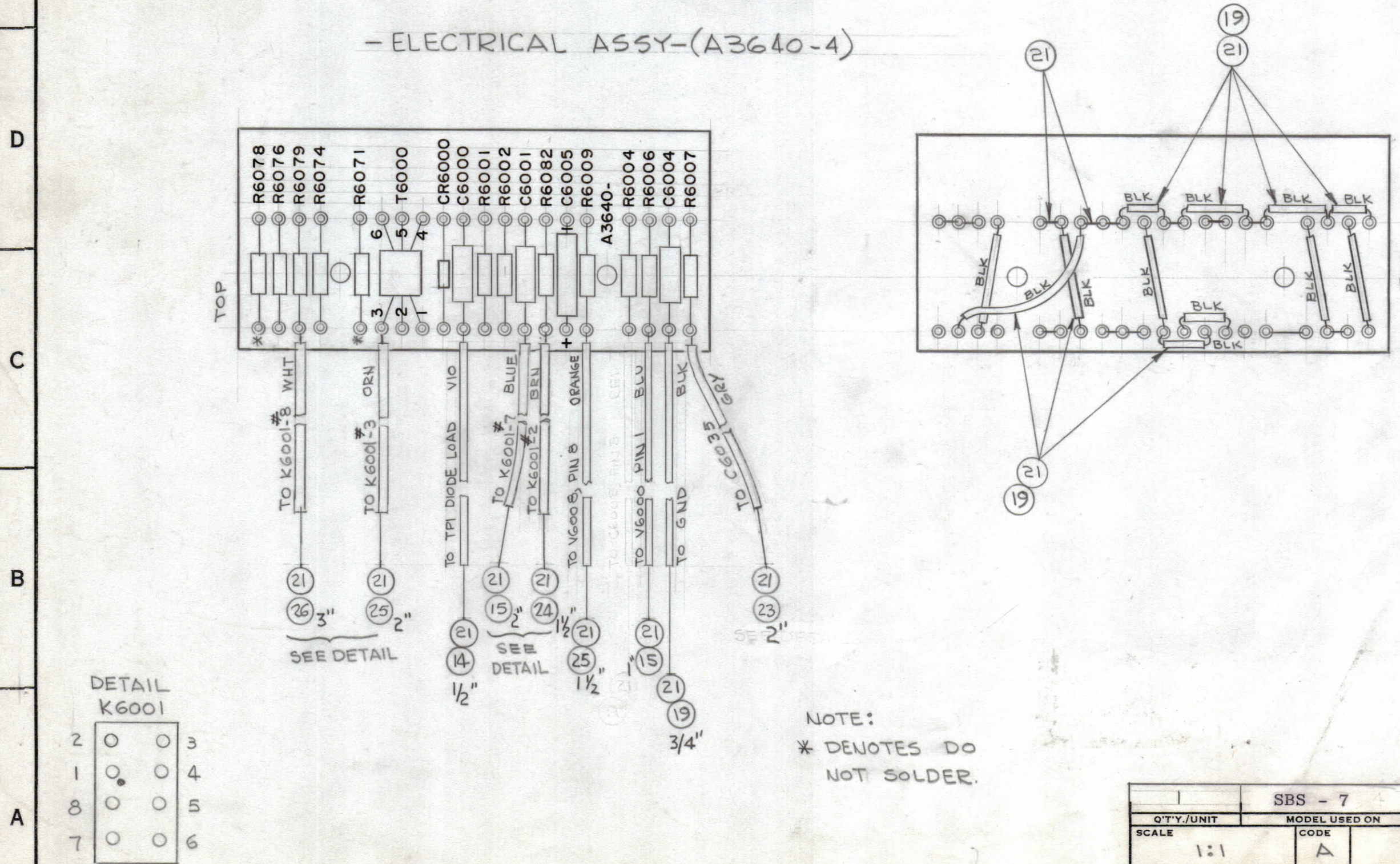
FUNGUS PROOFING PER TMC SPECIFICATION S-113, AFTER MARKING PROCESS.

MARK TMC PART NO. WITH LATEST REVISION LETTER, 3/32 HIGH BLACK GOTHIC

REVISIONS							
ZONE	SYM	DESCRIPTION	DATE	E.M.N. NO.	DRAFT	CHKD	APPD
X	X	EXPER. RELEASE	5-8-64	1			
X1	X1	ITEMS 1 THRU 22 ADDED	7-9-64	2			
X2	X2	TOL CLARIFIED	9/24/65	X2			
X3	X3	ITEMS 23 THRU 26, DETAIL 3/32 DIA TO A3640-2 ADDED	10-26-65	X3			
		ORIGINAL RELEASE FOR PRODUCTION	11-3-65				
A	A	ON ITEM 12 SYMBOL CR6000 WAS CR6001	10-7-66	17004	G.D.L.		
B	B	DELE. IT. 2, 17, 18. CHGD. QTY OF IT. 6 FR. 2 TO 1. DELE. R6001. ADD IT. 27. CHGD. 2" DIA TO 1.314	11/10/66	17235	RME		



- ELECTRICAL ASSY - (A3640-4)



REQ'D.	ITEM	PART NUMBER	DESCRIPTION	SYMBOL
2	27	RC20GF472 J	RESISTOR, FIXED, COMPOSITION	R6001
X	26	PX104-0-034	INSULATION, SLEEVING WHT	R6002
X	25	PX104-8-034	INSULATION, SLEEVING ORN	
X	24	PX104-5-034	INSULATION, SLEEVING BEN	
X	23	PX104-7-034	INSULATION, SLEEVING GRY	
X	22	BS100	SOLDER, SOFT	
X	21	WL100-6	WIRE, BUSS (#20)	
2	20	RC20GF103J	RESISTOR, FIXED, COMPOSITION	
X	19	PX104-1-034	INSULATION, SLEEVING BLK	
	18	DELETED		
	17	DELETED		
X	16	PX104-4-034	INSULATION, SLEEVING GRN	
X	15	PX104-6-034	INSULATION, SLEEVING BLU	
X	14	PX104-9-034	INSULATION, SLEEVING VIO	
1	13	TF228K15	TRANSFORMER, PULSE	T6000
1	12	IN34A	DIODE, SILICON	CR6000
1	11	CM20F821J03	CAPACITOR, FIXED, MICA	C6000
1	10	CM20F561J03	CAPACITOR, FIXED, MICA	C6001
1	9	CM15F471J03	CAPACITOR, FIXED, MICA	C6004
1	8	CE107-1	CAPACITOR, ELECTROLYTIC	C6005
1	7	RC20GF560J	RESISTOR, FIXED, COMPOSITION	R6082
1	6	473J	RESISTOR, FIXED, COMPOSITION	R6007
3	5	470J	RESISTOR, FIXED, COMPOSITION	R6011, 78, 79
1	4	391J	RESISTOR, FIXED, COMPOSITION	R6009
2	3	RC20GF331J	RESISTOR, FIXED, COMPOSITION	R6074, R6076
		DELETED		
40	1	TE168-4-B	TERMINAL, MINIATURE	B

O. POSE		LIST OF MATERIAL	
MATERIAL	SEE MACHINING	THE TECHNICAL MATERIEL CORP. MAMARONECK, NEW YORK	
FINISH	SEE MACHINING	TITLE TERMINAL BOARD ASSY (CHAN. "A" DETECTOR)	
SCALE	1:1	DRAWN	DATE
MODEL USED ON	A	CHECKED	DATE
ASSY. NO.	A2875	ELECT. DES.	DATE
UNLESS OTHERWISE SPECIFIED DIMENSIONS ARE IN INCHES AND INCLUDE CHEMICALLY APPLIED OR PLATED FINISHES		MECH. DES.	DATE
DECIMALS	TOLERANCES	FINAL APPROVAL	
.X ± .05	± 1/64	DATE	
.XX ± .01	ANGLES ± 0° 30'	DATE	
.XXX ± .005		DATE	
THE CONTENTS OF THIS DRAWING ARE THE EXCLUSIVE PROPERTY OF THE TECHNICAL MATERIEL CORP. ITS UNAUTHORIZED USE OR REPRODUCTION IN WHOLE OR IN PART IS STRICTLY FORBIDDEN.		SHEET	