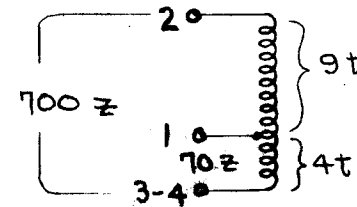
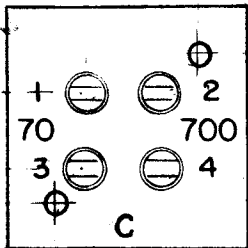


IF IT IS FOUND DESIRABLE TO CHANGE ANY TOLERANCE OR OTHER DETAIL SPECIFIED ON THIS DRAWING NOTIFY THE PURCHASER PROMPTLY.

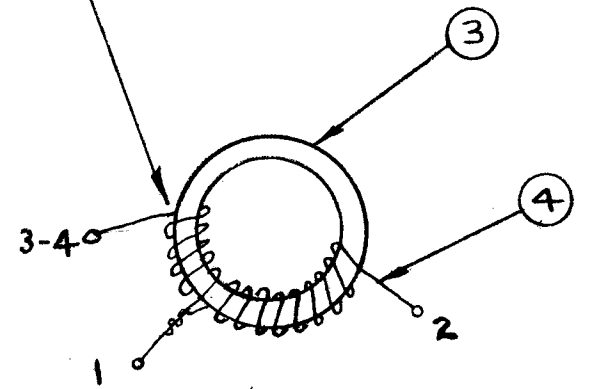
MAXIMUM ALLOWABLE TOLERANCES HAVE BEEN DETERMINED AND DEVIATIONS WILL BE CAUSE FOR REJECTION. REMOVE ALL BURRS AND SHARP EDGES

A-428 C

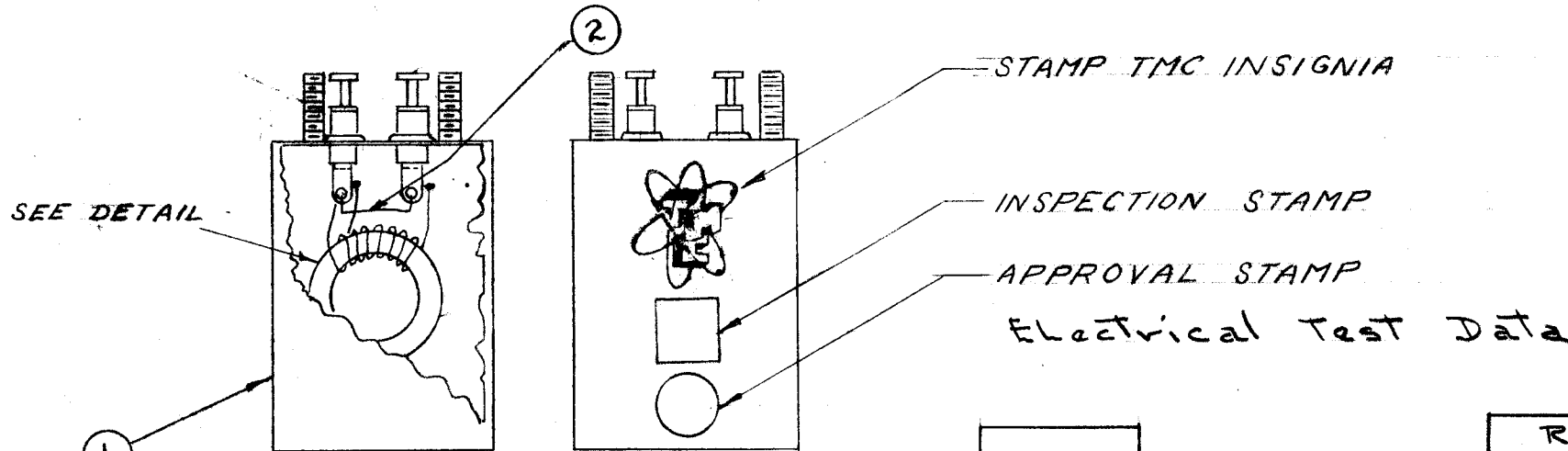
**FINISH:**  
 S-114 - ZINC CHROMATE PRIMER  
 S-115 - SMOOTH GRAY ENAMEL  
 DO NOT PAINT STUD END.  
 STAMPING AFTER PAINTING.  
 BLACK GOTHIC AS SHOWN.



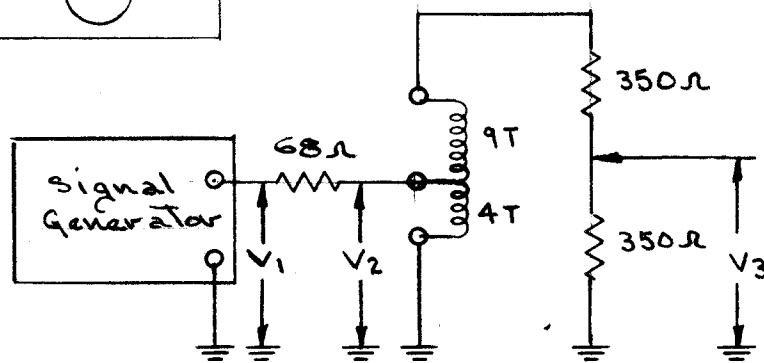
Both Windings In the Same Direction



FREQ. RANGE  
 2mc TO 30mc ± 3DB.  
 70 TO 700Ω UNBALANCED



TR022



fmc	RF VOLTS*		
	V1	V2	V3
2	1.0	.4	.61
8	1.0	.46	.68
32	1.0	.5	.69

\* Voltages with H.P. VTVM

**NOT TO BE RELEASED  
 W/O AUTHORIZATION**

AUTH. BY: \_\_\_\_\_  
 DATE: \_\_\_\_\_

REQ.	ITEM	PART NO.	DESCRIPTION	SYMBOL
1	7	NP-117	TMC INSIGNIA	
X	6	GL-100	POTTING COMPOUND	
X	5	BS-100	SOLDER SOFT	
X	4	WI-102-9	WIRE	
1	3	CI-100-2	CORE	
3/4"	2	WL-100-7	BUSS BAR TINNED	
1	1	BX-103	CASE & TERMINALS	
THE TECHNICAL MATERIEL CORP. MAMARONECK, NEW YORK				
ANTENNA MATCHING TRANSF.				
TR-022				
DRAWN: <i>ARB</i> 3-6-53				
ELEC. DES. APP. <i>ARB</i>				
MECH. DES. APP. _____				
HEAT TREAT. SPEC. _____				
CHECKED _____				
FINAL APPROVAL _____				
FINISH & SPEC. NO. _____				

ISSUE	ITEM	CHANGED FROM	DATE	CN. NO.	DRAFTS	CHECKER	ENG. APP.
C	1	STAMPING CLARIFIED	5/12/53	3	JAW	CEB	<i>[Signature]</i>
B	1	Test Data Added	5/11/53	2	JAW	CEB	<i>[Signature]</i>
A	1	WAS BX-100-3 S	5/8/53	1	JAW	CEB	<i>[Signature]</i>

TOLERANCES		SCALE:
ALL OTHERS	DEC. DIM. ± FRAC. DIM. ± ANGULAR DIM. ±	DRILL, PUNCH, COMMERCIAL STOCK SIZES AND MANUFACTURERS TOLERANCES ARE NOT INCLUDED.

TR-022	PROJECT NO.	ASS'Y. NO.	DATE
			3-5-53
USED ON			

A-428 C