

IF IT IS FOUND DESIRABLE TO CHANGE ANY TOLERANCE OR OTHER DETAIL SPECIFIED ON THIS DRAWING NOTIFY THE PURCHASER PROMPTLY.

MAXIMUM ALLOWABLE TOLERANCES HAVE BEEN DETERMINED AND DEVIATIONS WILL BE CAUSE FOR REJECTION. REMOVE ALL BURRS AND SHARP EDGES

STEP 1
WIND ON 4 CLOSELY WOUND TURNS OF WI-102-9 ALLOWING 2 INCHS EACH END FOR LEADS.

STEP 2
WIND ON 8 CLOSELY WOUND TURNS OF WI-102-9 ALLOWING 2 INCHS EACH END FOR LEADS

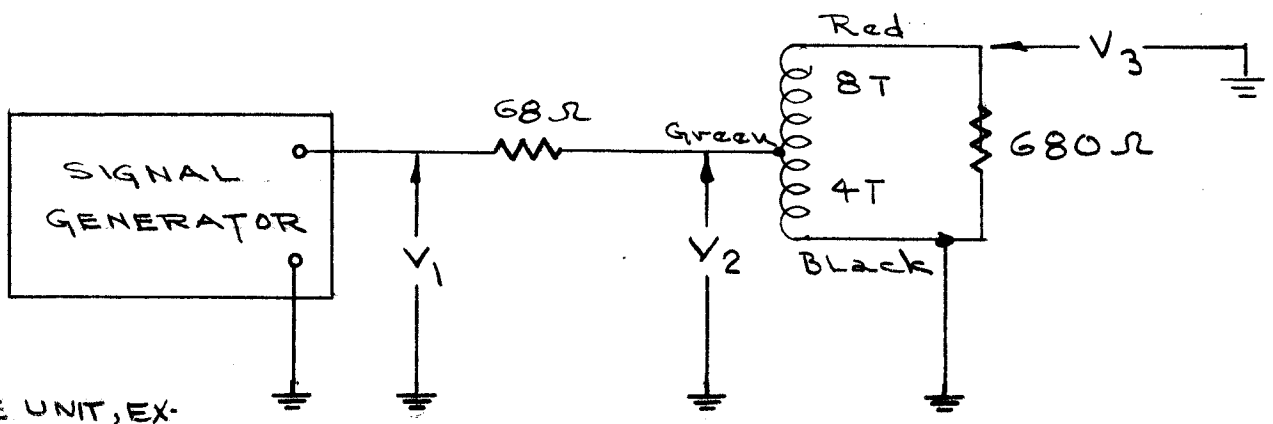
STEP 3
WRAP CORE PX-121 IN 1 OR MORE TURNS OF PAPER TO INSURE TIGHT FIT IN CENTER OF WIRE WOUND TOROID. INSERT CORE.

STEP 4
COLOR BEGINNING OF PRIMARY WINDING BLACK, END GREEN. COLOR BEGINNING OF SECONDARY LEAD GREEN, END RED.

STEP 5
DIP ENTIRE UNIT EXCEPT LEADS IN GL-104, INSULEX. BAKE FOR 30 MINUTES AT 170°C. ALLOW TO COOL TO ROOM TEMPERATURE

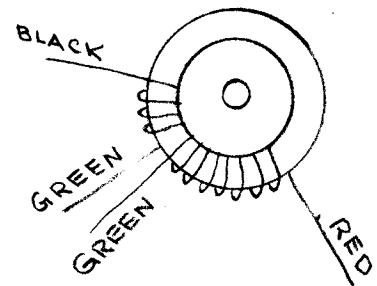
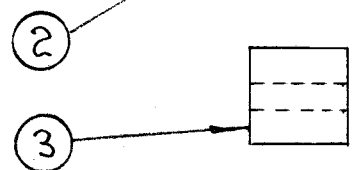
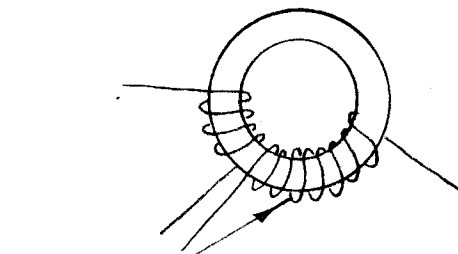
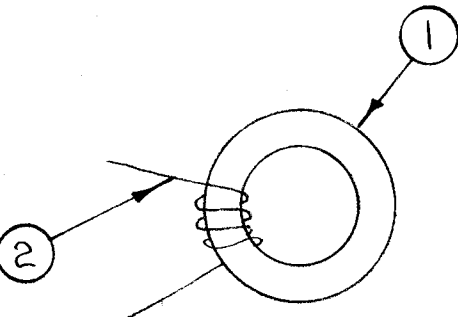
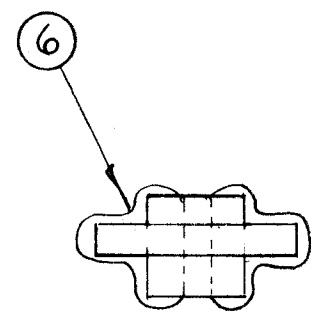
A-453 B

STEP 6
GIVE ENTIRE UNIT, EXCEPT LEADS AND HOLE, 2 COATS OF GL-100 POTTING COMPOUND.



f Mc	R.F. VOLTS		
	V ₁	V ₂	V ₃
2	1.0	.48	1.4
8	1.0	.5	1.4
30	1.0	.54	1.38

HEWLETT PACKARD VTVM



NOT TO BE RELEASED W/O AUTHORIZATION
AUTH. BY.....
DATE:.....

X	6	GL-100	POTTING COMPOUND	
X	5	GL-104	INSULEX	
X	4		DELETE	
1	3	PX-121	CORE	
X	2	WI-102-9	MAGNET WIRE, #30 CEC	
1	1	CI-104	TOROID	
REQ.	ITEM	PART NO.	DESCRIPTION	SYMBOL
#			THE TECHNICAL MATERIEL CORP.	
#			MAMARONECK. NEW YORK	
#			TRANSFORMER, H.F.O.	
#			TR-002	
#			9-20-52 CD. ARB	
#			DRAWN ARB	
#			ELEC. DES. APP. MECH. DES. APP.	
#			CHECKED	
#			FINAL APPROVAL	
#			A-453 B	
#			FINISH & SPEC. NO.	

ISSUE	ITEM	CHANGED FROM	DATE	CN. NO.	DRAFTS	CHECKER	ENG. APP.
B	2	TEST DATA ADDED	7/16/53	2	JAD	CDP	PM
A	1	NUMBER CHANGED	6-16	1			PM

TOLERANCES		SCALE:	USED ON			
ALL OTHERS	DEC. DIM. ± FRAC. DIM. ± ANGULAR DIM. ±	DRILL, PUNCH, COMMERCIAL STOCK SIZES AND MANUFACTURERS TOLERANCES ARE NOT INCLUDED.	DMK-A	140	A-154	9-20-52