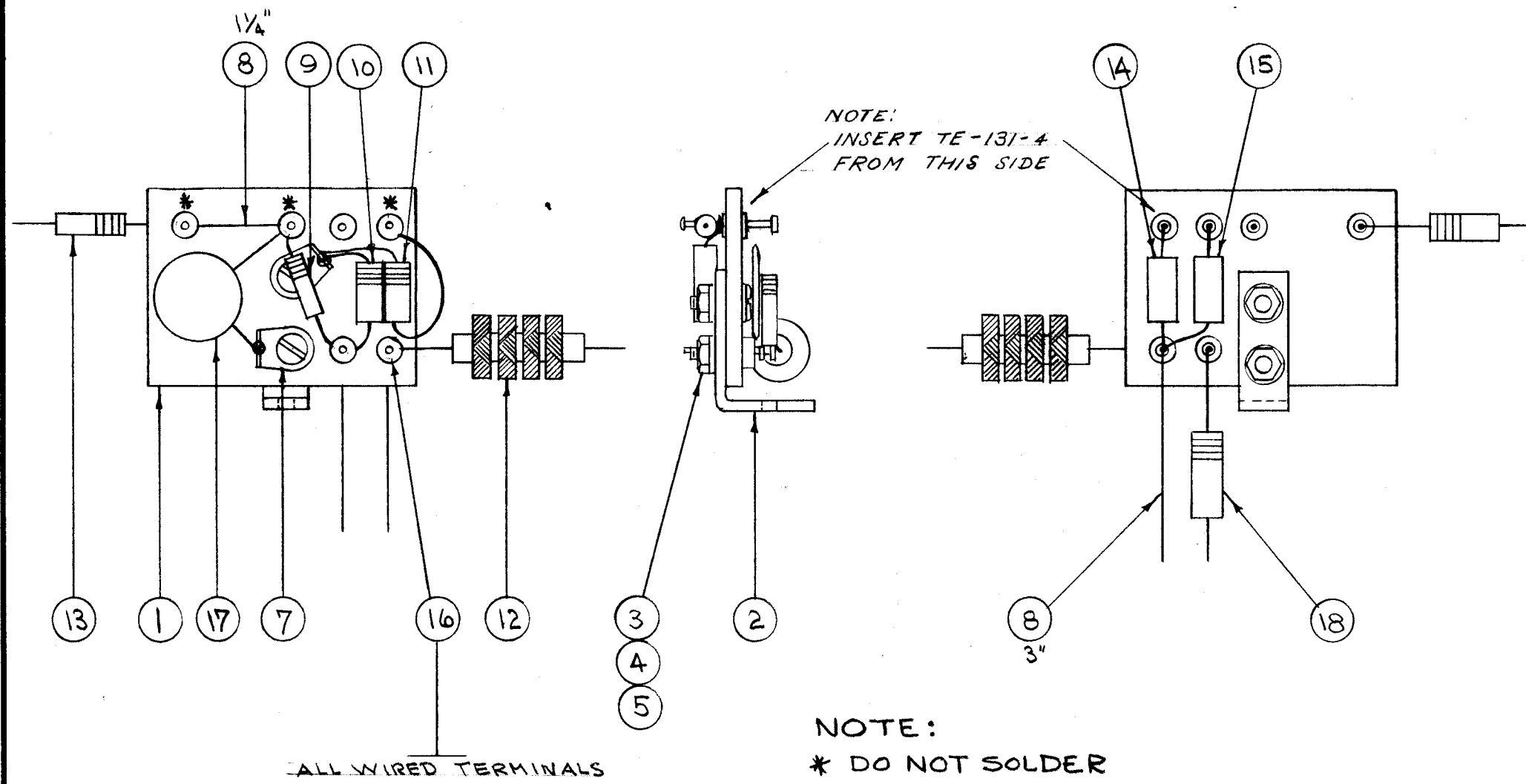


IF IT IS FOUND DESIRABLE TO CHANGE ANY TOLERANCE OR OTHER DETAIL SPECIFIED ON THIS DRAWING NOTIFY THE PURCHASER PROMPTLY.

MAXIMUM ALLOWABLE TOLERANCES HAVE BEEN DETERMINED AND DEVIATIONS WILL BE CAUSE FOR REJECTION. REMOVE ALL BURRS AND SHARP EDGES

A-465 C



1	18	RC 20GF 220K	RESISTOR, FIXED 22 Ω	R150
1	17	CC-100-16	CAPACITOR, FIXED .01 μf	C143
X	16	BS-100	SOLDER, SOFT	
1	15	CC 21 SL 100D	CAPACITOR, FIXED 10 μf	C144
1	14	CC 21 SL 050D	CAPACITOR, FIXED 5 μf	C145
1	13	RC 20GF 563K	RESISTOR, FIXED 56K	R138
1	12	CL-101-3	CHOKE 2.5 mh.	L104
1	11	CC-101-3	CAPACITOR, FIXED 220 μf	C134
1	10	CC-101-2	CAPACITOR, FIXED 150 μf	C142
1	9	RC 20GF 124K	RESISTOR, FIXED 120 K	R141
4 1/4"	8	WVL-100-8	WIRE, BUSS BAR	
2	7	TE-110-2	LUG, SOLDER	
#	6	DELETED	#	
2	5	NTH 0440 BC8	NUT, HEX.	
2	4	LWS 04MRC	LOCKWASHER, SPLIT	
2	3	SCBS 0440 BC6	SCREW, MACHINE	
1	2	MS-343	BRACKET, TERM. BD.	
1	1	A-1180	BOARD, TERMINAL (B.F.O.)	

REQ.	ITEM	PART NO.	DESCRIPTION	SYMBOL
#			THE TECHNICAL MATERIEL CORP. MAMARONECK. NEW YORK	
STOCK SIZE			TERMINAL BOARD ASSEMBLY	
#			B. F. O.	
MATERIAL			C.D.D. 4/22/53	
WEIGHT PER PC.			DRAWN	
TYPE & TEMPER			ELEC. DES. APP.	
HEAT TREAT. SPEC.			MECH. DES. APP.	
FINISH & SPEC. NO.			CHECKED	
			FINAL APPROVAL	

C	1	ITEM (11) REWIRED, SOLDER	10-23-62	7433	CB	NO	WOC
	2	NOTE ADDED					
B	1	ITEM 6 WAS TE-131-4	12/10/53	2	13	JAD	WOC
	1	ITEM 1 WAS PX-163					
A	1	NOTE ADDED	2-25-55	1	P.B.	JAD	WOC

ISSUE	ITEM	CHANGED FROM	DATE	CN. NO.	DRAFTS	CHECKER	ENG. APP.
TOLERANCES		SCALE:					
ALL OTHERS	DEC. DIM. ±	DRILL, PUNCH, COMMERCIAL STOCK					
	FRAC. DIM. ±	SIZES AND MANUFACTURERS					
	ANGULAR DIM. ±	TOLERANCES ARE NOT INCLUDED.					

FFR	104	A-263	5-13-53
MODEL	PROJECT NO.	ASS'Y. NO.	DATE
USED QN			