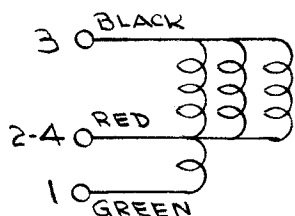
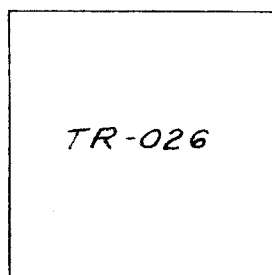
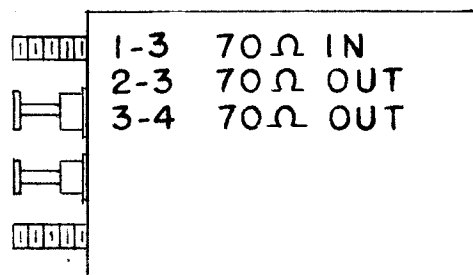
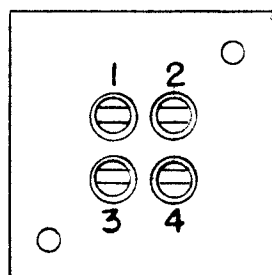


IF IT IS FOUND DESIRABLE TO CHANGE ANY TOLERANCE OR OTHER DETAIL SPECIFIED ON THIS DRAWING NOTIFY THE PURCHASER PROMPTLY.

MAXIMUM ALLOWABLE TOLERANCES HAVE BEEN DETERMINED AND DEVIATIONS WILL BE CAUSE FOR REJECTION. REMOVE ALL BURRS AND SHARP EDGES

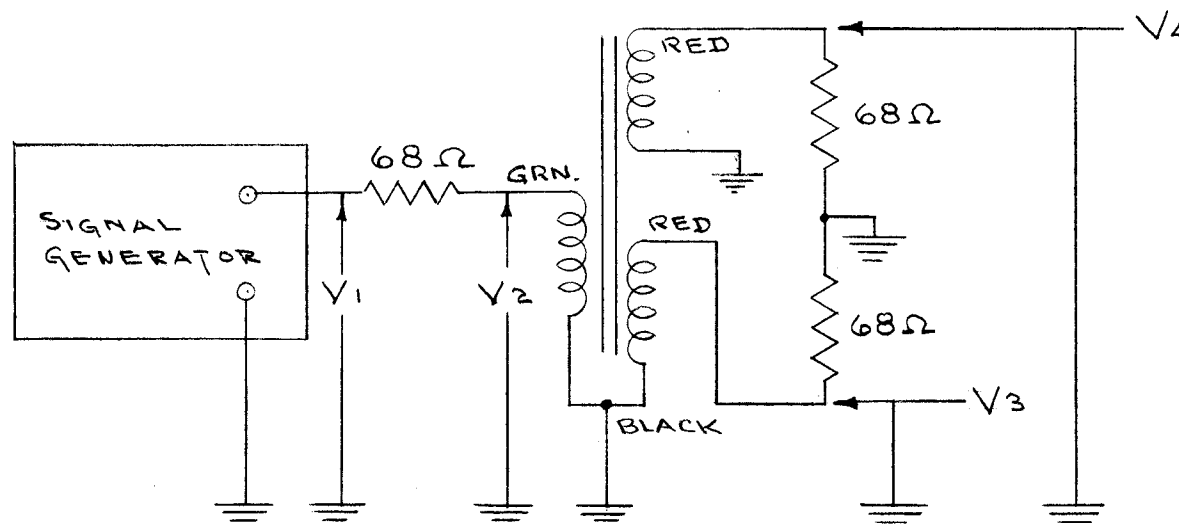
FINISH:  
 S-114-ZINC CHROMATE PRIMER  
 S-115-SMOOTH GRAY ENAMEL  
 DO NOT PAINT STUD END  
 STAMPING AFTER PAINTING:  
 BLACK GOTHIC AS SHOWN

A-470 B



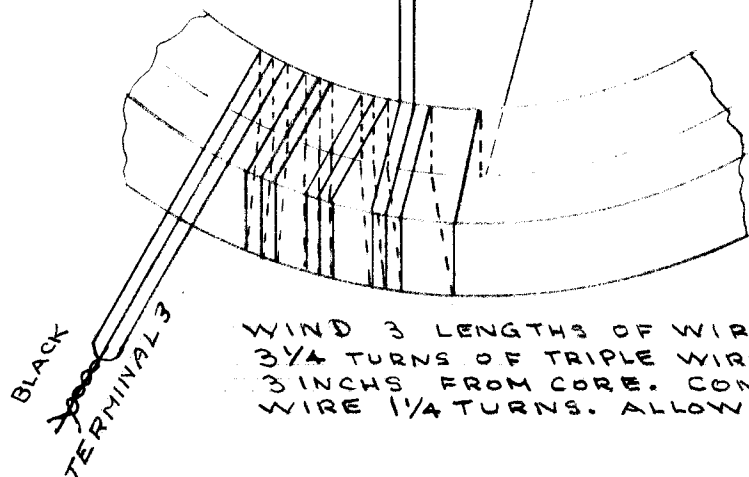
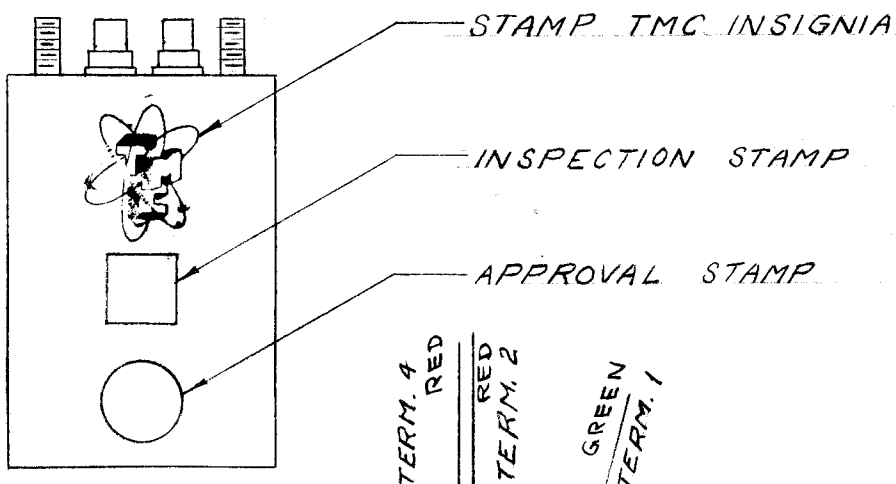
FREQ. RANGE 2-30 MC. ±3db.  
 1-3 70Ω IN UNBAL.  
 2-3 70Ω OUT BAL.  
 3-4 70Ω OUT BAL.

ELECTRICAL TEST DATE



| f. mc. | R.F. VOLTS * |     |     |     |
|--------|--------------|-----|-----|-----|
|        | V1           | V2  | V3  | V4  |
| 2      | 1.05         | .50 | .30 | .30 |
| 8      | 1.05         | .56 | .33 | .33 |
| 32     | 1.05         | .62 | .29 | .29 |

\*VOLTAGES MEASURED WITH H.P. VTVM



WIND 3 LENGTHS OF WIRE IN PARALLEL ON BOBBIN. PLACE 3 1/4 TURNS OF TRIPLE WIRE ON CORE. CUT 2 WIRES ABOUT 3 INCHES FROM CORE. CONTINUE WINDING REMAINING WIRE 1/4 TURNS. ALLOW 3" LEAD. COLOR CODE AS SHOWN.

|   |   |           |                   |
|---|---|-----------|-------------------|
| 1 | 6 | NP-117    | TMC INSIGNIA      |
| X | 5 | GL-100    | POTTING COMPOUND  |
| X | 4 | BS-100    | SOLDER, SOFT      |
| X | 3 | WE-102-11 | WIRE              |
| 1 | 2 | CI-100-2  | CORE              |
| 1 | 1 | BX-103    | CASE, TRANSFORMER |

| REQ. | ITEM | PART NO. | DESCRIPTION  | SYMBOL                          |
|------|------|----------|--|---------------------------------|
| #    |      |          | THE TECHNICAL MATERIEL CORP.<br>MAMARONECK. NEW YORK |                                 |
| #    |      |          | TRANSFORMER, ANT. MATCHING                           |                                 |
| #    |      |          | TR-026   |                                 |
| #    |      |          | C.D. 5-21-53   | ARB                             |
| #    |      |          | DRAWN  | ELEC. DES. APP. MECH. DES. APP. |
| #    |      |          | HEAT TREAT. SPEC.                                    | CHECKED FINAL APPROVAL          |
| #    |      |          | S-404 YELLOW IRIDITE                                 | A-470 B                         |
| #    |      |          | FINISH & SPEC. NO.                                   |                                 |

**NOT TO BE RELEASED W/O AUTHORIZATION**  
 AUTH. BY: \_\_\_\_\_  
 DATE: \_\_\_\_\_

| B          | 1   | S404 WAS S-101     | 12/10/59  | 1001    | AG     | EMN     |           |
|------------|---|--------------------|---|---------|--------|---------|-----------|
| A          | 1   | STAMPING CLARIFIED | 5/12/55   | 1       | AG     | EMN     |           |
| ISSUE      | ITEM  | CHANGED FROM       | DATE  | CN. NO. | DRAFTS | CHECKER | ENG. APP. |
| TOLERANCES |   |                    | SCALE: #  |         |        |         |           |
| ALL OTHERS | DEC. DIM. ±<br>FRAC. DIM. ±<br>ANGULAR DIM. ± |                    | DRILL, PUNCH, COMMERCIAL STOCK SIZES AND MANUFACTURERS TOLERANCES ARE NOT INCLUDED. |         |        |         |           |
| MODEL      |   | PROJECT NO.        | ASS'Y. NO.  | DATE    |        |         |           |
| USED ON    |   |                    |   |         |        |         |           |