

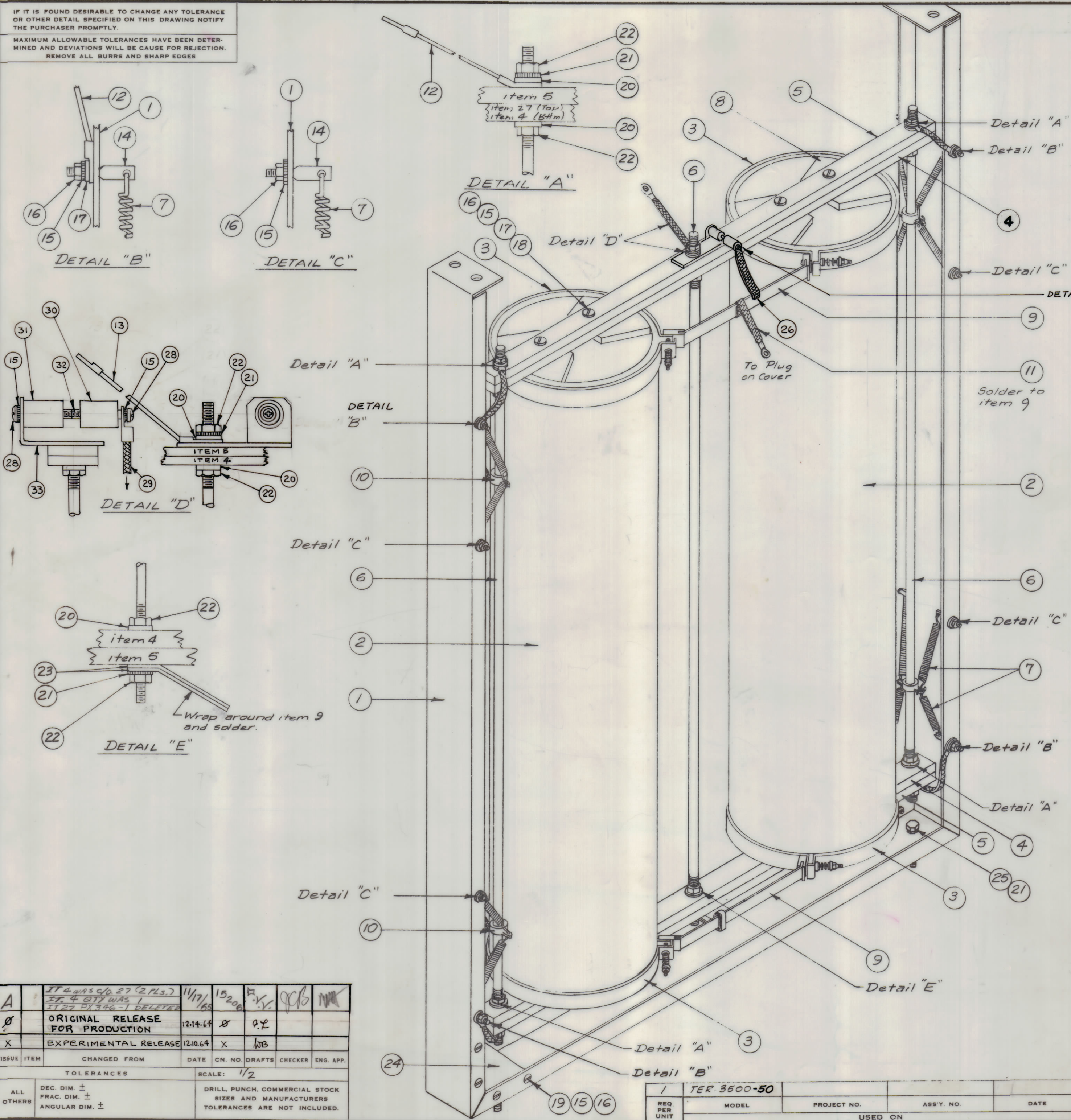
IF IT IS FOUND DESIRABLE TO CHANGE ANY TOLERANCE OR OTHER DETAIL SPECIFIED ON THIS DRAWING NOTIFY THE PURCHASER PROMPTLY.

MAXIMUM ALLOWABLE TOLERANCES HAVE BEEN DETERMINED AND DEVIATIONS WILL BE CAUSE FOR REJECTION. REMOVE ALL BURRS AND SHARP EDGES

**NOTICE TO PERSONS RECEIVING THIS DRAWING**

THE TECHNICAL MATERIEL CORPORATION claims proprietary right in the material disclosed hereon. This drawing is issued in confidence for engineering information only and may not be reproduced or used to manufacture anything shown hereon without permission from THE TECHNICAL MATERIEL CORPORATION to the user. This drawing is loaned for mutual assistance and is subject to recall at any time.

Property of:  
THE TECHNICAL MATERIEL CORPORATION  
MAMARONECK, NEW YORK



1	33	MS 4155	BRACKET, MTG, CAP
1	32	SM06328N0250	STUD, CONT., THD
1	31	CC109-19	CAPACITOR, FIXED, CER
1	30	CC109-36	CAPACITOR, FIXED, CER
1	29	CA409-94-1.875	LEAD, ELEC.
2	28	SCBP06328N4	SCREW, MACHINE
	27	DELETED	
X	26	BS-100	Solder, Soft
2	25	SCHH2520BC18	Screw, Hex Head
2	24	MS-766	Gusset, Resistor Support
2	23	TE-111-1	Lug, Solder
12	22	NTH25288 14	Nut, Hex.
8	21	LWE25MRN	Lockwasher, External

A 4033 A

11	20	FW25HBN	Washer, Flat
8	19	SCFP06328N6	Screw, Machine
8	18	SCBP06328N16	Screw, Machine
12	17	FW06HBN	Washer, Flat
32	16	NTH06328N10	Nut, Hex.
34	15	LWEO6MRN	Lockwasher, External
16	14	SC-106-1	Bolt, Spade, Straight
1	13	CA-409-98-3.50	Lead, Electrical
4	12	CA-409-97-2.75	Lead, Electrical
1	11	CA-409-66-4.00	Lead, Electrical
4	10	MC-105-2	Coupling, Fixed
2	9	MS-202-1-3.00	Lead, Connecting, 1/16" Wide
8	8	PX-314	Support, Resistor, Inside
16	7	SP-124	Spring, Extension
3	6	PM-373-1	Rod, Support (20 1/4" Lg)
2	5	PM-374	Support, Resistor
2	4	PX-315	Insulator, Bottom
4	3	A-1144	Strap Assembly
2	2	RR-117-100	Resistor, Fixed, 900 Watts
1	1	MS-745	Main Support, Resistor

A	IT 4 was c/p 27 (2 PLS.) IT 4 BTY WAS 1 IT 27 PX 346-1 DELETED	11/17/65	15206	P.V.	QC/B	MM	
Ø	ORIGINAL RELEASE FOR PRODUCTION	12.14.64	X	P.F.			
X	EXPERIMENTAL RELEASE	12.10.64	X	WB			
ISSUE	ITEM	CHANGED FROM	DATE	CN. NO.	DRAFTS	CHECKER	ENG. APP.
TOLERANCES		SCALE: 1/2					
ALL OTHERS	DEC. DIM. ± FRAC. DIM. ± ANGULAR DIM. ±	DRILL, PUNCH, COMMERCIAL STOCK SIZES AND MANUFACTURERS TOLERANCES ARE NOT INCLUDED.					

1	TER 3500-50				
REQ PER UNIT	MODEL	PROJECT NO.	ASS'Y. NO.	DATE	USED ON

THE TECHNICAL MATERIEL CORP. MAMARONECK, NEW YORK			
RESISTOR SUPPORT			
ASS'Y TER-3500-50			
STOCK SIZE			
MATERIAL	WEIGHT PER PC.		
TYPE & TEMPER			
HEAT TREAT. SPEC.			
FINISH & SPEC. NO.			
DRAWN	ELEC. DES. APP.	MECH. DES. APP.	
CHECKED		FINAL APPROVAL	
			A 4033 A