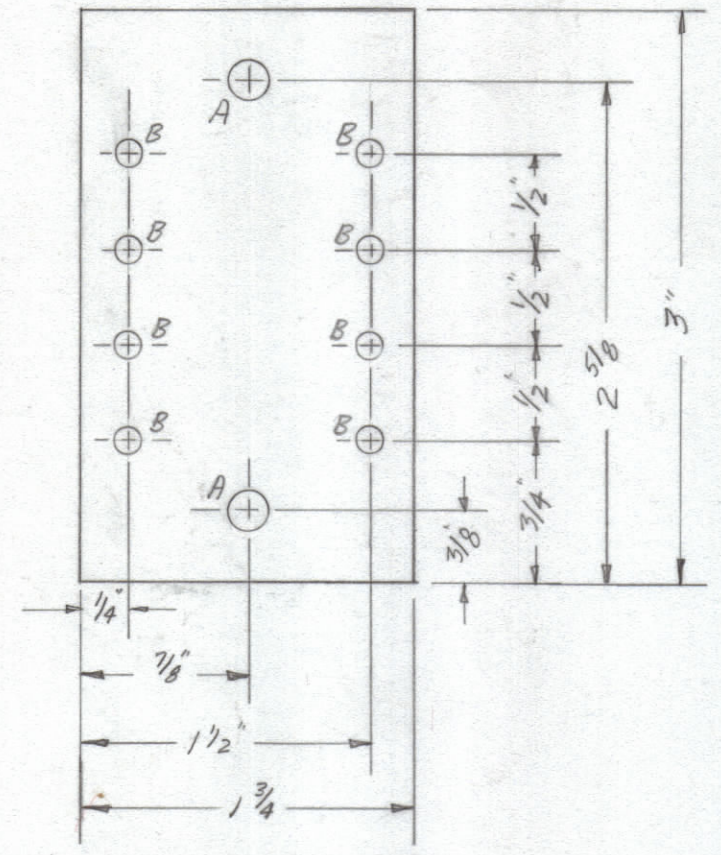
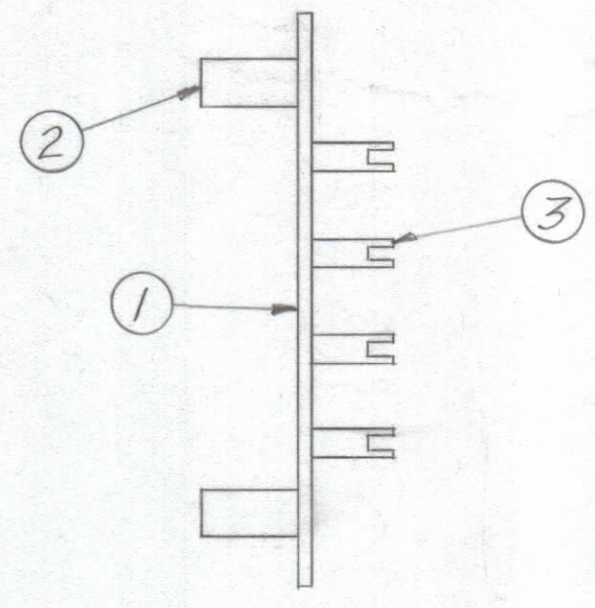


REVISIONS						
ZONE	SYM	DESCRIPTION	DATE	E.M.N. NO.	DRAFT	APPD
	Ø	ORIGINAL RELEASE FOR PRODUCTION	4/10/69		GE	

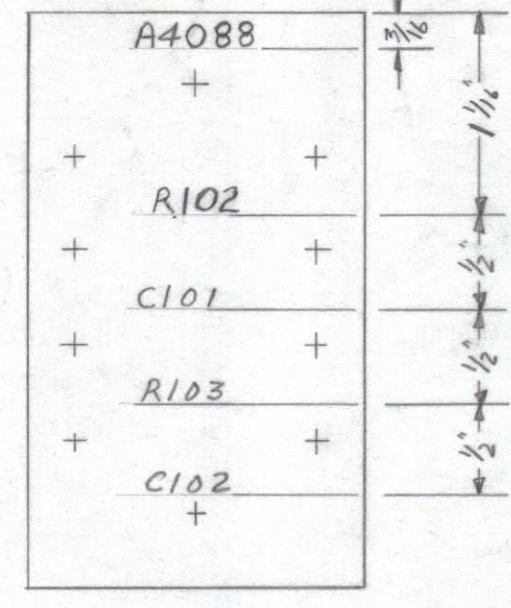


A - .189 DIA 2 REQ.  
B - .116 DIA. 8 REQ.

A4088-1

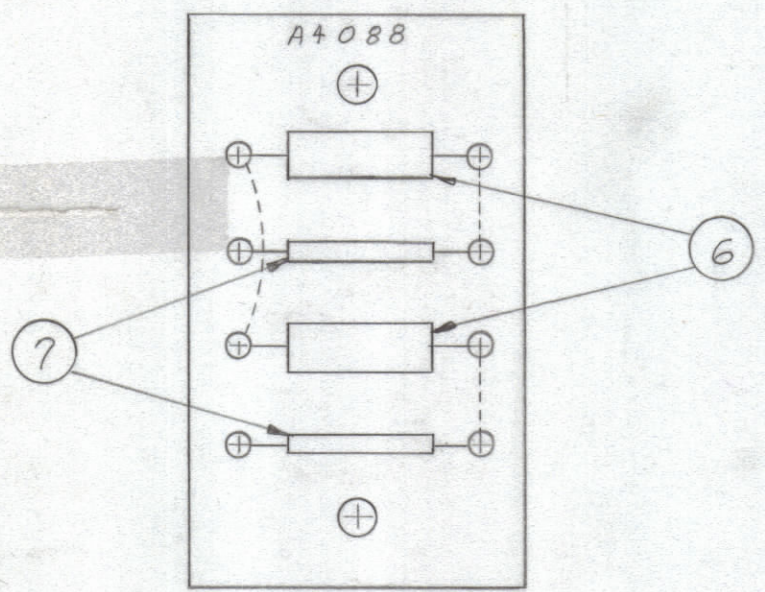


A4088-3  
A4088-4

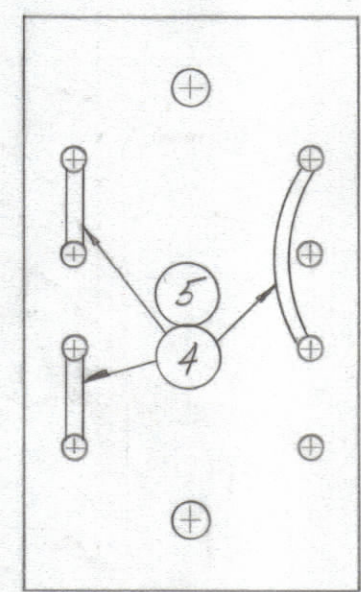


1/8" GOTHIC LETTERING

A4088-2



TOP VIEW



BOTTOM VIEW

REQ'D.	ITEM	PART NUMBER	DESCRIPTION	SYMBOL
8	BS100		SOLDER, TIN ALY	
2	7	CC100-32	CAP. DISC	C101, 2
2	6	RC426F100K	RES. FXD. COMP.	R102, 3
5		PX104-1-.034	INS. SLV. S220	
4		WL100-7	WIRE, ELEC. BUSS	
8	3	TE109-2	TERM. STUD	
2	2	TE108-16	NUT, PLN. CINGH	
1	1	A4088-1	3/32" G-11, GLASS EPOXY	

LIST OF MATERIAL				
MATERIAL	THE TECHNICAL MATERIEL CORP. MAMARONECK, NEW YORK			
FINISH	TITLE SUPPRESSOR BOARD ASSEMBLY			
UNLESS OTHERWISE SPECIFIED DIMENSIONS ARE IN INCHES AND INCLUDE CHEMICALLY APPLIED OR PLATED FINISHES	DRAWN G/S	DATE 3/12/65	FINAL APPROVAL S/M	DATE 2-11-69
DECIMALS .X ± .05 .XX ± .01 .XXX ± .005	TOLERANCES	FRACTIONS ± 1/64 ANGLES ± 0° 30'	ELECT. DES. DATE 4/11/69	MECH. DES. DATE
			SHEET A4088	REV. LTR. Ø

1	LSP-6X	A3999
QTY./UNIT	MODEL USED ON	ASSY. NO.
SCALE	CODE	

NOTES

THE CONTENTS OF THIS DRAWING ARE THE EXCLUSIVE PROPERTY OF THE TECHNICAL MATERIEL CORP. ITS UNAUTHORIZED USE OR REPRODUCTION IN WHOLE OR IN PART IS STRICTLY FORBIDDEN.

A4088