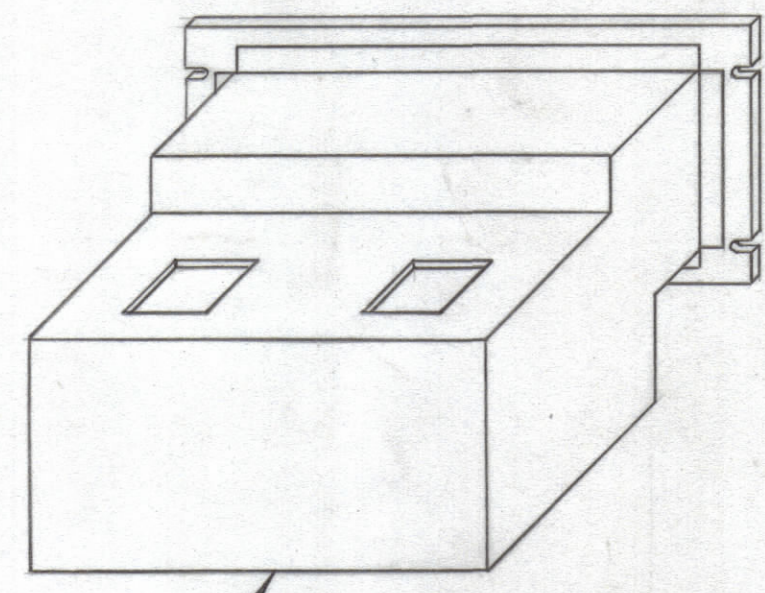
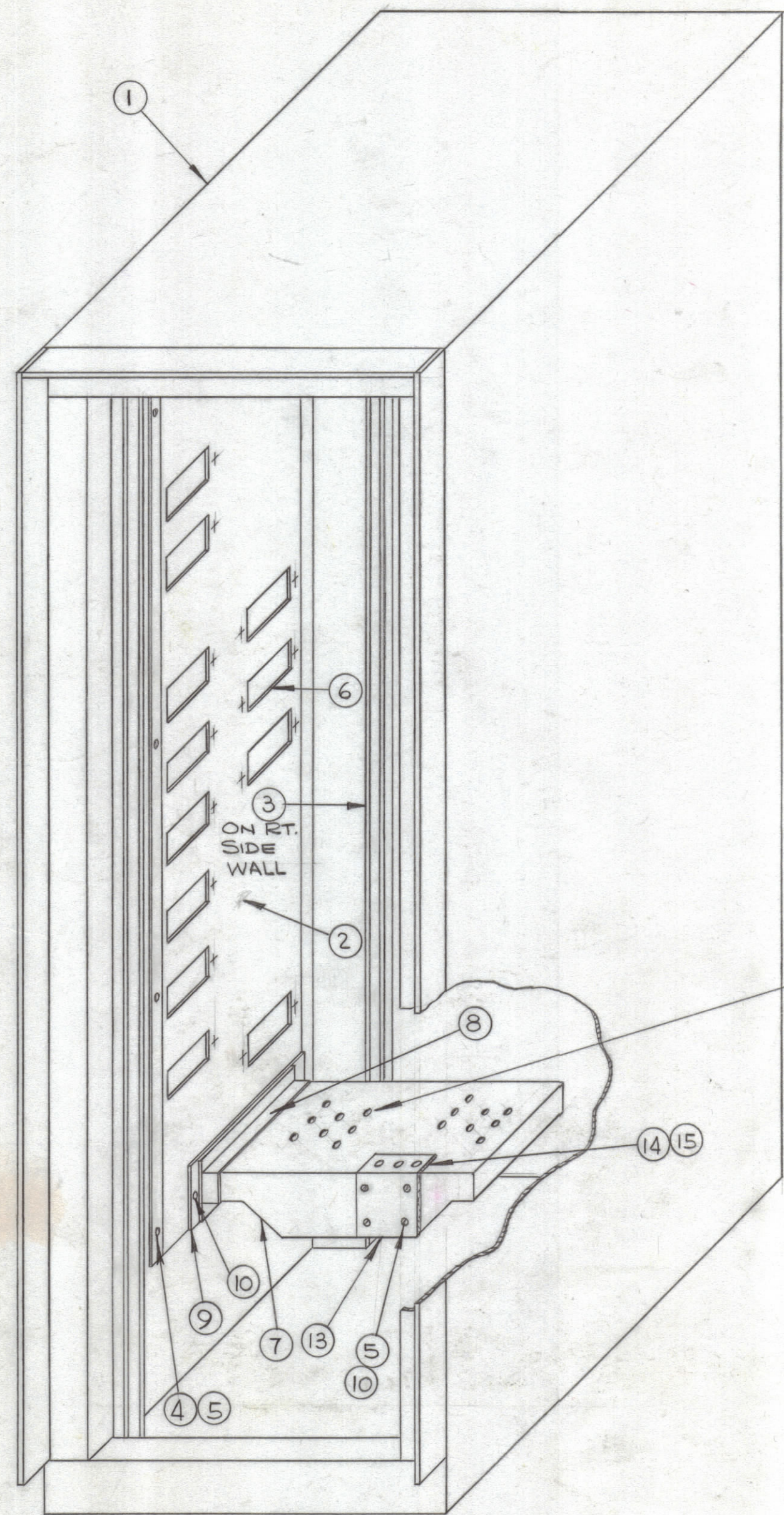


REVISIONS							
ZONE	SYM	DESCRIPTION	DATE	E.M.N. NO.	DRAFT	CHKD	APPD
	X	EXPERIMENTAL RELEASE	2-8-65		HLA		
	Ø	ORIGINAL RELEASE FOR PRODUCTION	2-8-65		2F	JM	



**NOTE 1:**  
 MS3351 & MS3352, 1 EACH TO BE SUPPLIED BY CABINET MFG.  
 TMC TO REMOVE & ASSEMBLE AS PART OF AX 390.

MOUNT WITH AIR HOLES TOWARD FRONT OF CABINET

DOORS & WINDOWS REMOVED FOR CLARITY

REQ'D.	ITEM	PART NUMBER	DESCRIPTION	SYMBOL
2	15	TAIII-2-6-1.12A	TAPE, URETHANE	
2	14	TAIII-2-6-6.50A	TAPE, URETHANE	
1	13	MS4179	COVER, AIR DUCT	
SEE NOTE 1	12	MS3352	CHASSIS, FAN	
SEE NOTE 1	11	MS3351	CHASSIS, FAN	
11	10	SCBPO632BNG	SCREW, MACHINE	
2	9	GA152	GASKET, RECTANGULAR	
2	8	MS3101	FLANGE, TANK	
1	7	MS3887	TANK, PRESSURE	
32	6	FPI94	DEFLECTOR, AIR	
27	5	LWS06MRN	WASHER, LOCK, SPLIT	
16	4	SCBPO632BN4	SCREW, MACHINE	
1	3	MS3959-2	DUCT, RIGHT	
1	2	MS3959-1	DUCT, LEFT	
1	1	RAK-102-1	CABINET, ELEC. EQUIP., BASIC	

LIST OF MATERIAL				
MATERIAL	THE TECHNICAL MATERIEL CORP. MAMARONECK, NEW YORK			
FINISH	TITLE CABINET, ELECTRICAL EQUIP.			
UNLESS OTHERWISE SPECIFIED DIMENSIONS ARE IN INCHES AND INCLUDE CHEMICALLY APPLIED OR PLATED FINISHES	DRAWN H. AUSTIN	DATE 2-8-65	FINAL APPROVAL <i>[Signature]</i>	DATE 2/10/67
DECIMALS .X ± .05 .XX ± .01 .XXX ± .005	TOLERANCES	FRACTIONS ± 1/64 ANGLES ± 0° 30'	ELECT. DES. DATE	MECH. DES. DATE
			A4090	
			SHEET	
			REV. LTR.	

**NOTES**

THE CONTENTS OF THIS DRAWING ARE THE EXCLUSIVE PROPERTY OF THE TECHNICAL MATERIEL CORP. ITS UNAUTHORIZED USE OR REPRODUCTION IN WHOLE OR IN PART IS STRICTLY FORBIDDEN.

A4090