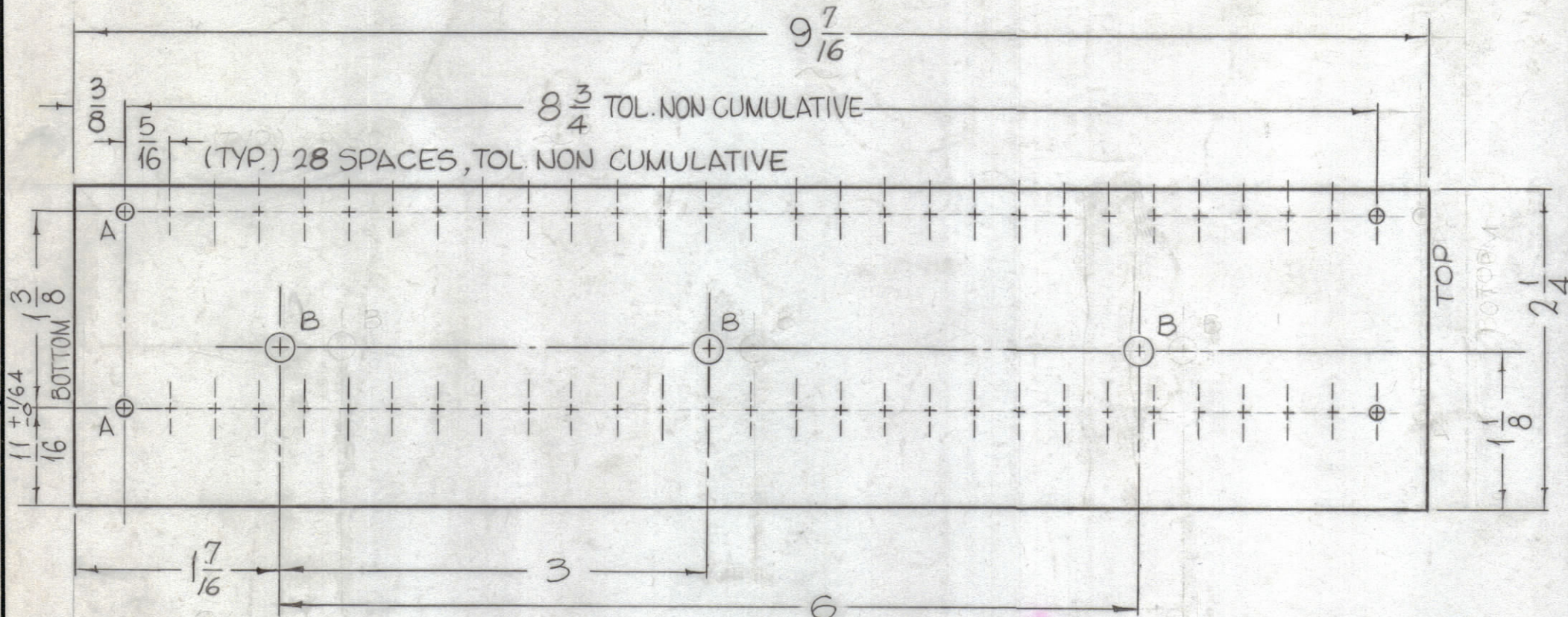
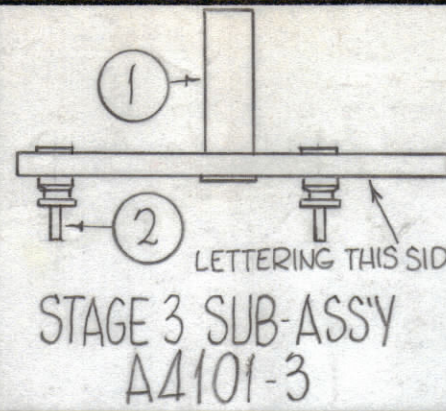


HOLES REQ. MAT'L 1/8 THICK G11 EPOXY, NATURAL

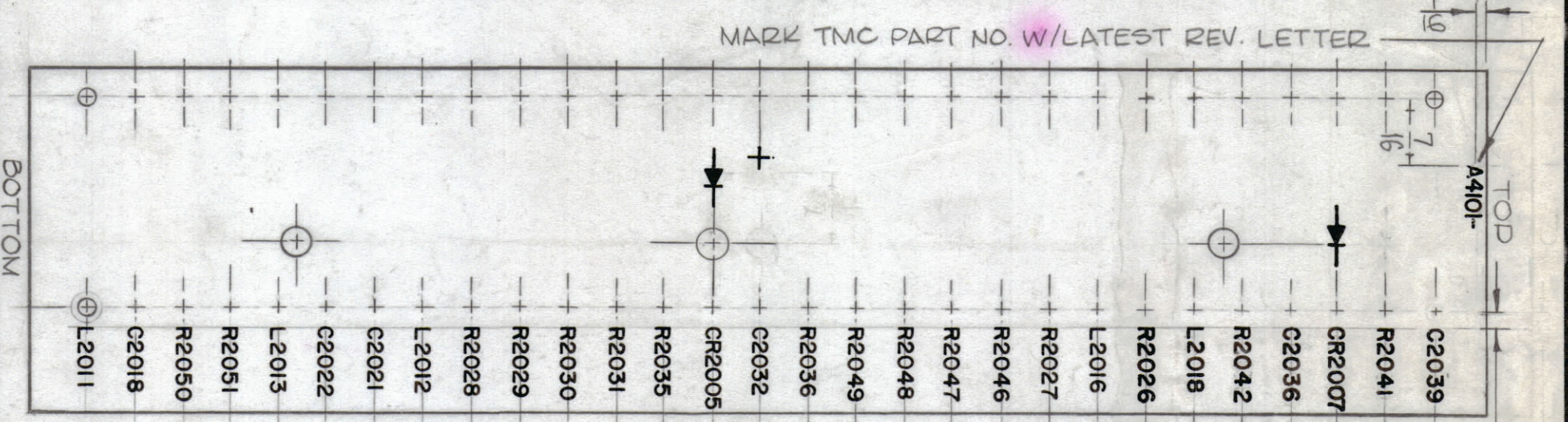
A-.115 DIA. 58  
B-.189 DIA.  $\pm .003$  3



STAGE 1 - MACHINING A4101-1



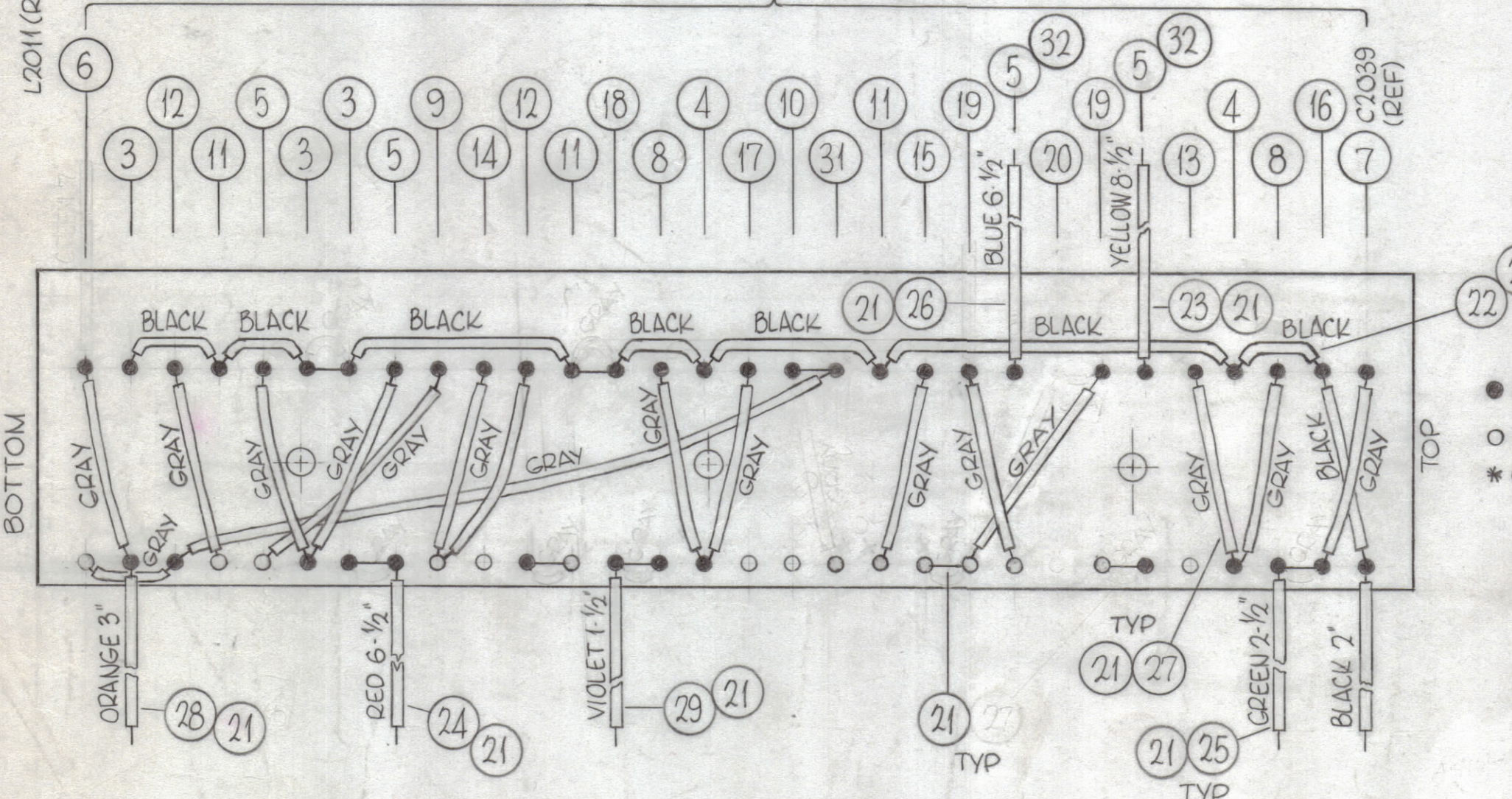
REVISIONS						
ZONE	SYM	DESCRIPTION	DATE	E.M.N. NO.	DRAFT	CHKD
	X1	ITEM # 10, SYMBOL WAS R2044	1-20-65		JL	
	X2	GRAY JUMPED ON R2049(TOP) TO R2048 (BOTTOM) DELETED BUSS WIRE ADDED BETWEEN R2049 & R2048	3-31-65		SRG	
	X3	ITEMS 31, 32 ADDED; ITEM 9 DELETED; ITEM 10 WAS RC20GF202; ITEM 20 WAS RB100ERBOK, 11 WAS RC30GF470K	11-11-65			
	Ø	ORIGINAL RELEASE FOR PRODUCTION	11-16-65		AVV	
	A	IT. 20 RB100ERBOK (R2025) DELETED. SPACER 28 WAS TO 29. MTL THICKNESS 1/8 WAS 3/32. 2 1/4 HOLES DELETED. 9 7/16 WAS 9 3/4. 8 3/4 WAS 9 1/8. 1 7/16 WAS 1 3/4	11/16/65	15386	AVV	QCB
	B	ON B/M UPDATED I.T. 11 THRU 19, 2, 22 THRU 29	2-23-66	15831	HLA	SRG
	C	STAGE 1 HOLES PHYSICALLY RELOCATED; STAGE 2 SYM. RELOC.	6-16-66	16249	LHO	QCB



UNLESS OTHERWISE SPECIFIED MARKING PROCESS AS PER TMC SPEC. 5727. LETTERING 3/32 HIGH, WHITE GOTHIC.

STAGE 2 - MARKING A4101-2

MOUNT ALL COMPONENTS ON OPPOSITE (LETTERED) SIDE.



● DENOTES SOLDER POINT  
○ DENOTES NO SOLDER  
\* CUT AS REQ.

REQ'D.	ITEM	PART NUMBER	DESCRIPTION	SYMBOL
X	32	PX 370-7-11-15	INS, SLVG, TEFLON	
I	31	RB100E2R00J	RESISTOR, FIXED PRECISION	R2048
X	30	BS100	SOLDER, SOFT	
X	29	PX 104-9-034	INSULATION, SLEEVING, ELECT.	VIOLET
X	28	-8		ORANGE
X	27	-7		GRAY
X	26	-6		BLUE
X	25	-4		GREEN
X	24	-3		RED
X	23	-2		YELLOW
X	22	PX 104-1-034	INSULATION, SLEEVING, ELECT.	BLACK
X	21	WL100-7	WIRE, BUSS BAR TINNED	
	20		RESISTOR, FIXED PRECISION	
2	19	RC32GF470J	RESISTOR, FIXED, COMPOSITION (INSUL)	R2026, R2027
1	18	RC20GF562J		R2035
1	17	RC20GF333J		R2036
1	16	RC20GF272J		R2041
1	15	RC20GF226J		R2046
1	14	RC20GF183J		R2029
1	13	RC20GF224J		R2042
2	12	RC20GF106J		R2030, R2050
3	11	RC20GF474J		R2031, R2047, R2051
1	10	RC20GF222J		R2049
1	9	RC20GF100J	RESISTOR, FIXED, COMPOSITION (INSUL)	R2028
2	8	IN67	DIODE	CR2005, CR2007
1	7	CM20B101K	CAP, FIXED MICA DIELECTRIC	C2039
1	6	CL226-5	COIL, RF, FERRITE CORE	L2011
4	5	CL101-4	CHOKE, RF	L2012, L2013, L2016, L2018
2	4	CE105-5-50	MINATURE, ELECTROLYTIC, CAPACITOR	C2032, C2036
3	3	CC100-32	CAPACITOR, FIXED, CERAMIC DISC	C2018, C2021, C2022
58	2	TE109-3	SPLIT, TERMINAL LUG	
3	1	TE108-24	STANDOFF, RIVET TYPE	

BUDETTI LIST OF MATERIAL				
MATERIAL	FINISH	TITLE	THE TECHNICAL MATERIEL CORP. MAMARONECK, NEW YORK	
M	M	TERMINAL BOARD ASSY, L.S.		
UNLESS OTHERWISE SPECIFIED DIMENSIONS ARE IN INCHES AND INCLUDE CHEMICALLY APPLIED OR PLATED FINISHES		DRAWN John C Biele	DATE 1-7-65	FINAL APPROVAL [Signature]
DECIMALS .X ± .05 .XX ± .01 .XXX ± .005		CHECKED QCB	DATE 6-24-65	DATE 11/16/65
FRACTIONS ± 1/64 ANGLES ± 0° 30'		ELECT. DES. [Signature]	DATE [Signature]	DATE [Signature]
TOLERANCES		MECH. DES. [Signature]	DATE [Signature]	DATE [Signature]
			DATE [Signature]	DATE [Signature]

NOTES

THE CONTENTS OF THIS DRAWING ARE THE EXCLUSIVE PROPERTY OF THE TECHNICAL MATERIEL CORP. ITS UNAUTHORIZED USE OR REPRODUCTION IN WHOLE OR IN PART IS STRICTLY FORBIDDEN.

QTY./UNIT	MODEL USED ON	ASSY. NO.
1	VLLA-1	
SCALE 1:1	CODE A	