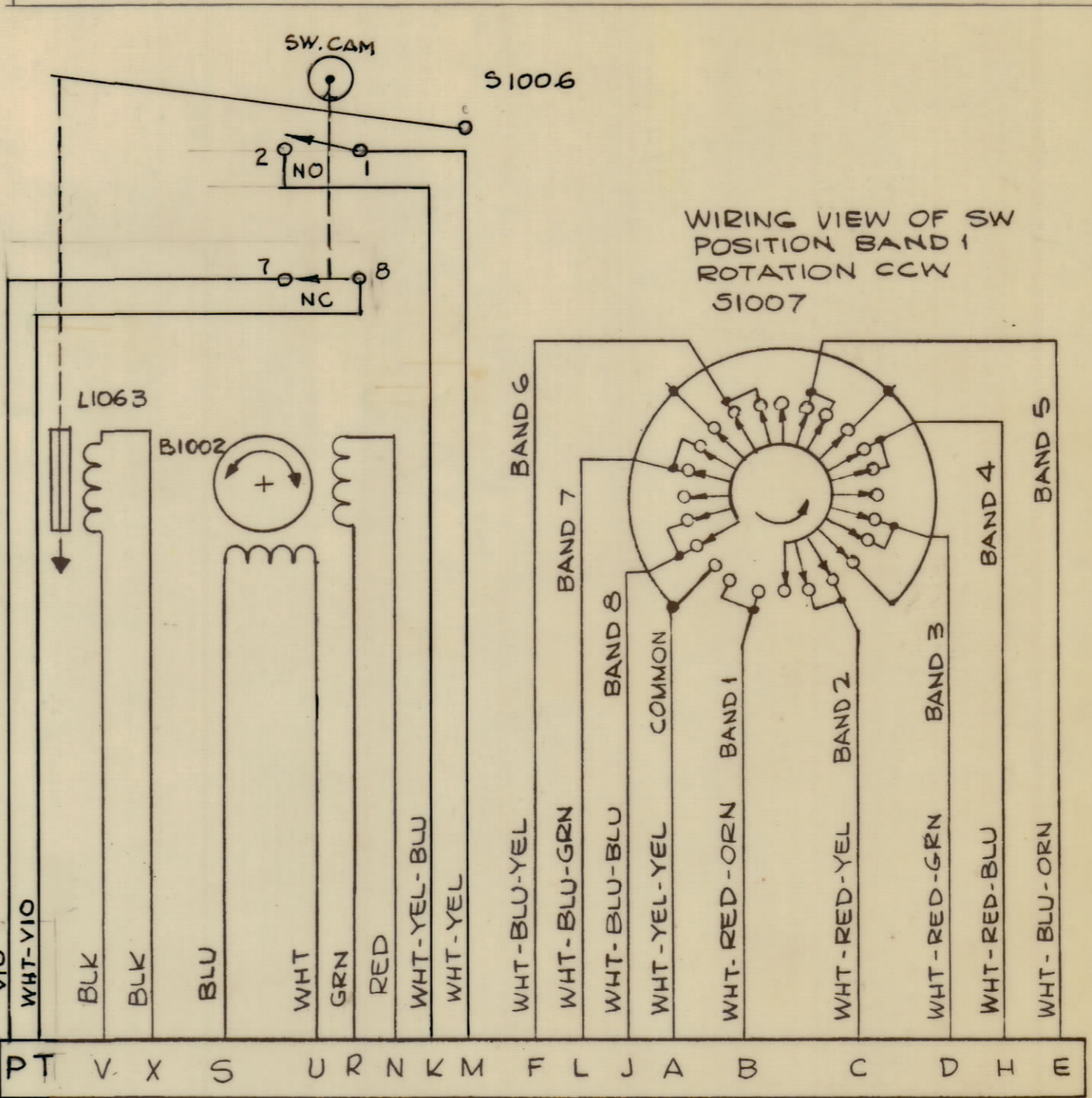
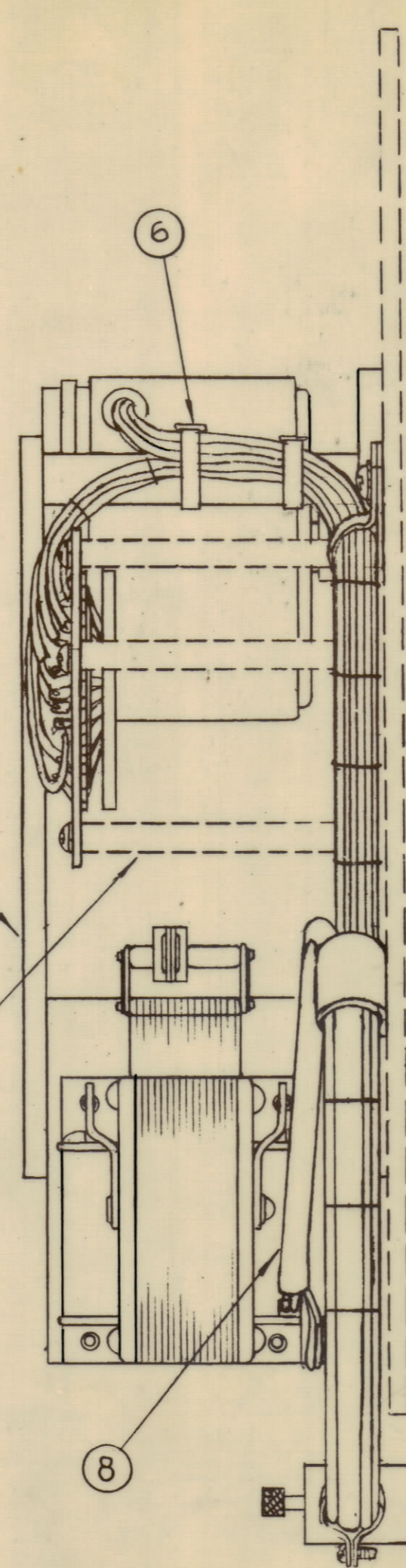
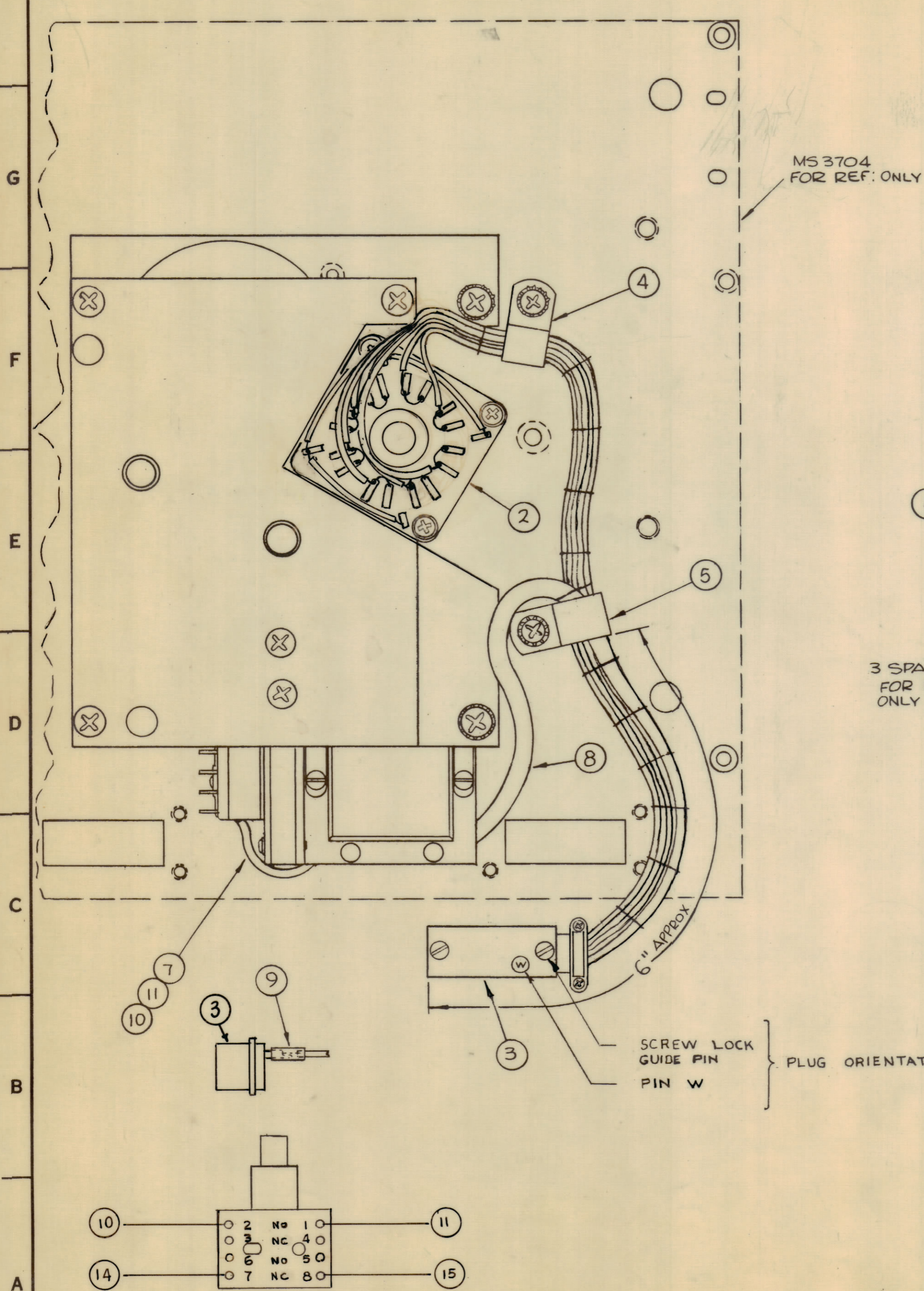


REVISIONS						
ZONE	SYM	DESCRIPTION	DATE	E.M.N. NO.	DRAFT	CHKD
		ORIGINAL RELEASE	3-24-65		G.D.L.	
A		ADD. -1 TO IT, 1	6-7-71	20367	RJ	



- SCHEMATIC DIAGRAM -

QTY./UNIT	MODEL USED ON	ASSY. NO.	DESCRIPTION	SYMBOL
15"	15	WI140B22N97	WIRE, ELECTRICAL INS.	WHT/VIO
15"	14	WI140B22N7	WIRE, ELECTRICAL INS.	VIO
X	13	CD101-1MW	CORD, NYLON LACING	
X	12	BS100	SOLDER, TIN ALLOY	
15"	11	WI-140-B22N 94	WIRE, ELECTRICAL INS.	WHT/YEL
15"	10	WI-140-B22N 946	WIRE, ELECTRICAL INS.	WHT-YEL-BLU
X	9	PX830-18-1	INSULATION, SLVG, SHRINK	
X	8	PX100-1-234	INSULATION, SEEVING	
X	7	PX100-1-118	INSULATION, SLEEVING	
2	6	CU142-6-9	STRAP, CABLE, ADJ	
1	5	CU102-5	CLAMP LOOP	
1	4	CU102-4	CLAMP LOOP	
1	3	PL-225-6P	CONNECTOR, PL, MALE	
1	2	A 3745	NOTCH HOMING SWITCH WIRING ASS'Y	
1	1	A4168-1	GEAR ASS'Y	

REQ'D.	ITEM	PART NUMBER	DESCRIPTION	SYMBOL
J. ANGER LIST OF MATERIAL				
MATERIAL			THE TECHNICAL MATERIEL CORP. MAMARONECK, NEW YORK	
FINISH			TITLE BAND SWITCH GEAR ASS'Y, AUTOMATIC	
UNLESS OTHERWISE SPECIFIED DIMENSIONS ARE IN INCHES AND INCLUDE CHEMICALLY APPLIED OR PLATED FINISHES			DRAWN G.D.L. DATE 3-23-65	FINISH APPROVAL
DECIMALS .X ± .05 .XX ± .01 .XXX ± .005			CHECKED [Signature] DATE 3/24/65	DATE 3/24/65
TOLERANCES FRACTIONS ± 1/64 ANGLES ± 0° 30'			ELECT. DES. J. Anger DATE 3/24/65	MECH. DES. DATE
			SHEET 1	REV. LTR. A

1	CHGR-3	A4169
SCALE 1:1	CODE A	

THE CONTENTS OF THIS DRAWING ARE THE EXCLUSIVE PROPERTY OF THE TECHNICAL MATERIEL CORP. ITS UNAUTHORIZED USE OR REPRODUCTION IN WHOLE OR IN PART IS STRICTLY FORBIDDEN.

NOTES

A4169