

7

6

5

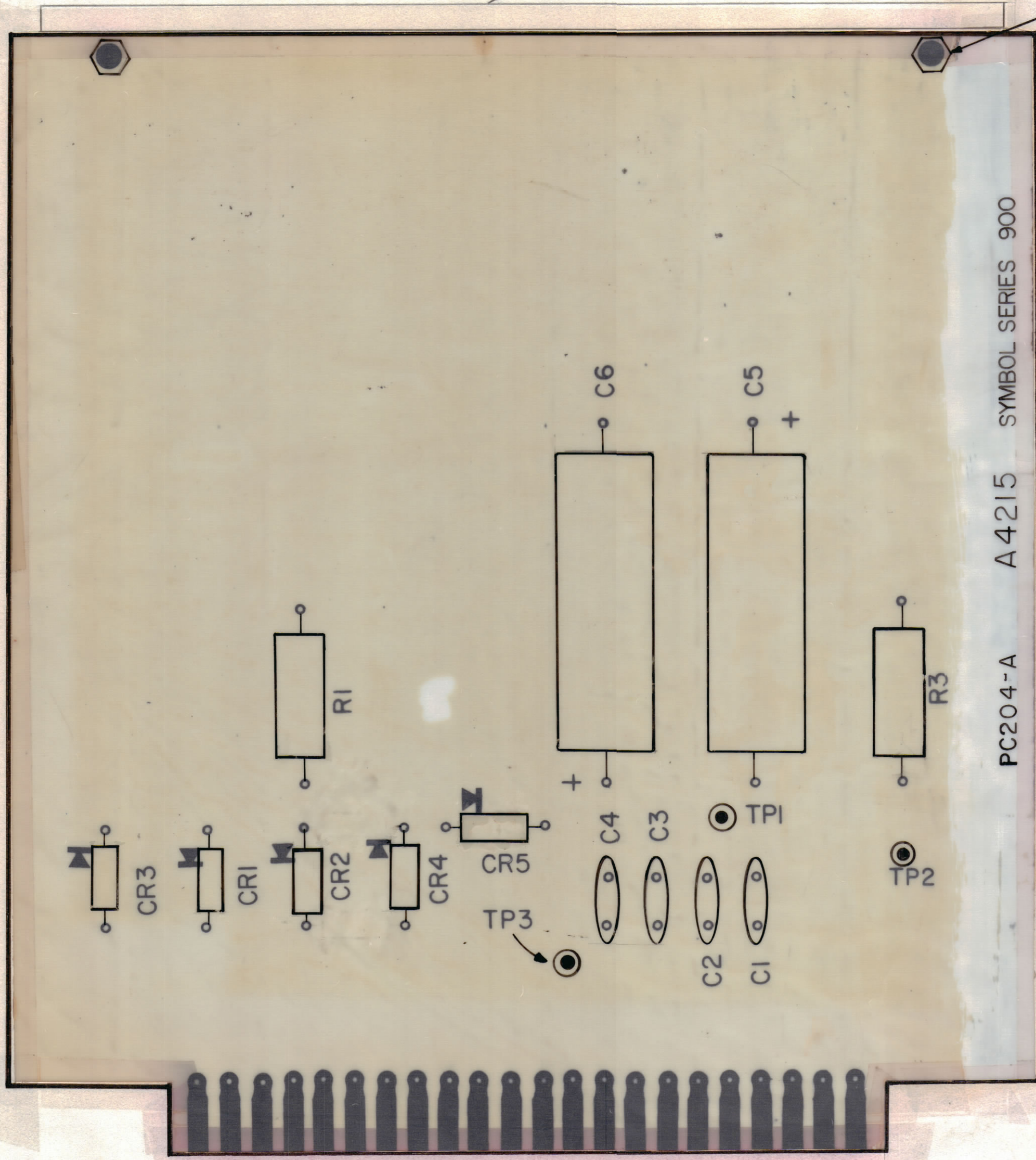
4

3

2

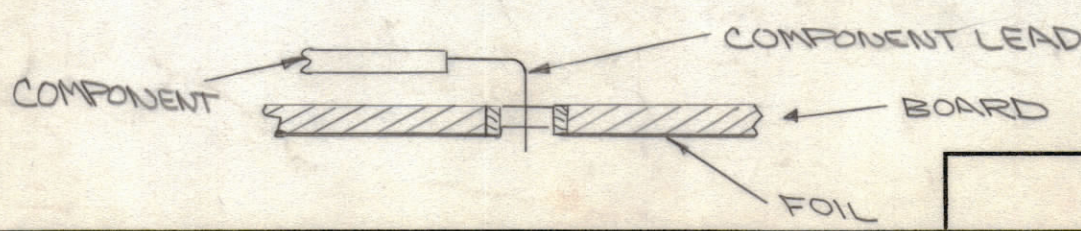
1

		REVISIONS					
ZONE	SYM	DESCRIPTION	DATE	E.M.N. NO.	DRAFT	CHKD	APPD
1		TOLERANCE CLARIFIED	7/2/65	X			
2		ORIGINAL RELEASE FOR PRODUCTION	9/21/65				



PC204-A A4215 SYMBOL SERIES 900

**ASSEMBLY NOTICE**  
 1. TO MOUNT COMPONENTS INSERT LEAD THROUGH PLATED-THRU HOLES & BEND ABOUT 1/6 OF LEAD OVER COPPER FOIL AS SHOWN.  
 2. APPLY HEAT & SOLDER TO LEAD & FOIL - CAUTION - TOO MUCH HEAT WILL CAUSE THE FOIL TO SEPARATE FROM THE BOARD.  
 3. CLEAN & INSPECT PER S-676-  
 4. FUNGUS PROOFING PER TMC SPEC. S-113



**NOTES**

QTY./UNIT	CMRA-1	A-5059
SCALE	MODEL USED ON	ASS'Y. NO.
2:1	CODE	

THE CONTENTS OF THIS DRAWING ARE THE EXCLUSIVE PROPERTY OF THE TECHNICAL MATERIEL CORP. ITS UNAUTHORIZED USE OR REPRODUCTION IN WHOLE OR IN PART IS STRICTLY FORBIDDEN.

C901,902, 903,904

CR901,902, 903,904, 905

REQ'D.	ITEM	PART NUMBER	DESCRIPTION	SYMBOL
X	12	BS100	SOLDER, TIN ALY	
1	11	PC204	PRINTED CIRCUIT BD	
4	10	CC100-15	CAP, FXD, CER	
2	9	CE116-6V	CAP, FXD, ELECT.	C905,906
1	8	RC42GF102J	RES, FXD, COMP	R903
1	7	RC42GF221J	RES, FXD, COMP	R901
5	6	1N2484	SECON DEV, DIODE	
1	5	MS4363	STIFFNER	
2	4	FW04HBN	WASH., FLAT	
2	3	LWE04MRN	WASH., LOCK, EXT	
2	2	NTH0440BN6	NUT, PLN, HEX	
2	1	SCBP0440BN5	SCR, MACH	

LIST OF MATERIAL				
MATERIAL		THE TECHNICAL MATERIEL CORP. MAMARONECK, NEW YORK		
FINISH		TITLE ASSY' PRINTED CIRCUIT BOARD POWER SUPPLY		
UNLESS OTHERWISE SPECIFIED DIMENSIONS ARE IN INCHES AND INCLUDE CHEMICALLY APPLIED OR PLATED FINISHES	DRAWN	DATE	FINAL APPROVAL	DATE
DECIMALS .X ± .05 .XX ± .01 .XXX ± .005	LANZA	7-1-65		9/20/65
FRACTIONS ± 1/64 ANGLES ± 0° 30'	CHECKED	DATE		
TOLERANCES	ELECT. DES.	DATE	A4215	
	MECH. DES.	DATE	SHEET	REV. LT

A4215