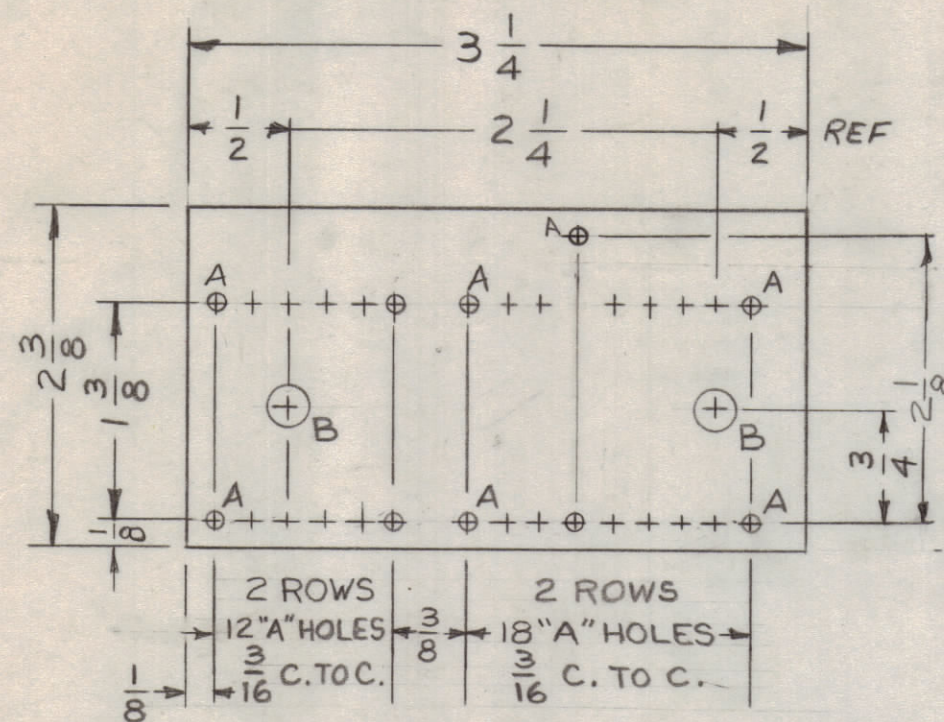


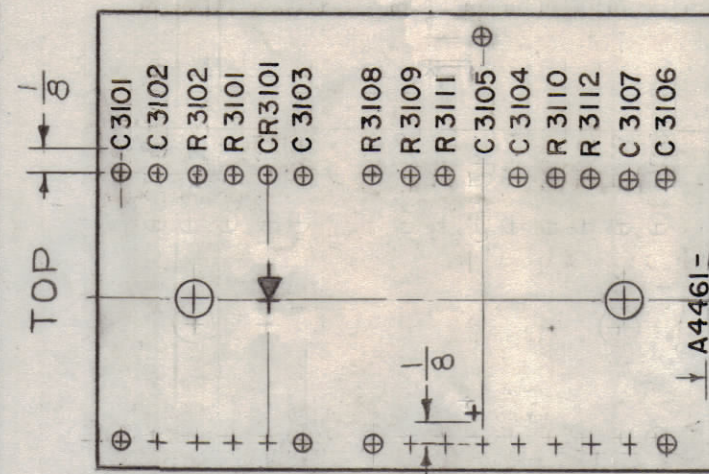
DO NOT SCALE,  
WORK TO DIMENSIONS

HOLES  
A - .078 D. 30 REQ  
B - .189 D. 2 REQ



STAGE 1 MACHINING (A4461-1)  
MATERIAL -  $\frac{3}{32}$ , XXXP, PHENOLIC, FINISH - NATURAL  
FINISH - NATURAL

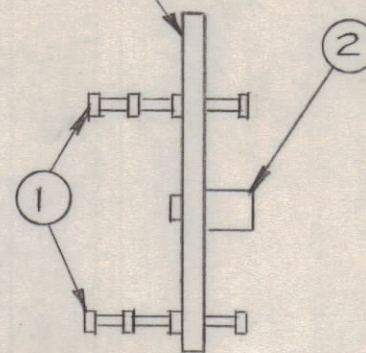
MARK TMC PART/NO.  
W/LATEST REVISION LETTER



LETTERING:  $\frac{3}{32}$  BLACK GOTHIC  
AS PER TMC SPEC S 727

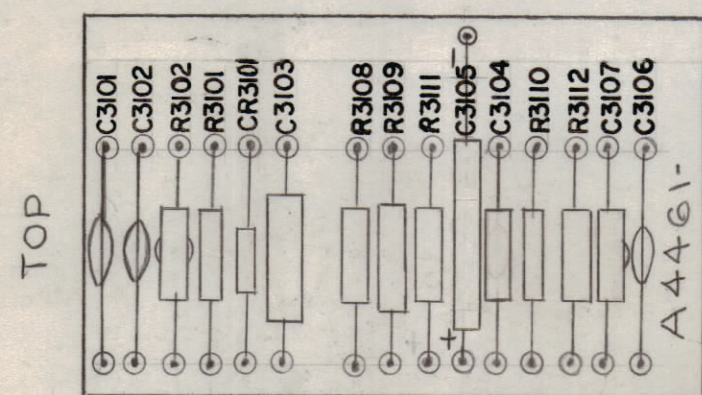
STAGE 2 MARKING (A4461-2)

LETTERING  
ON THIS SIDE

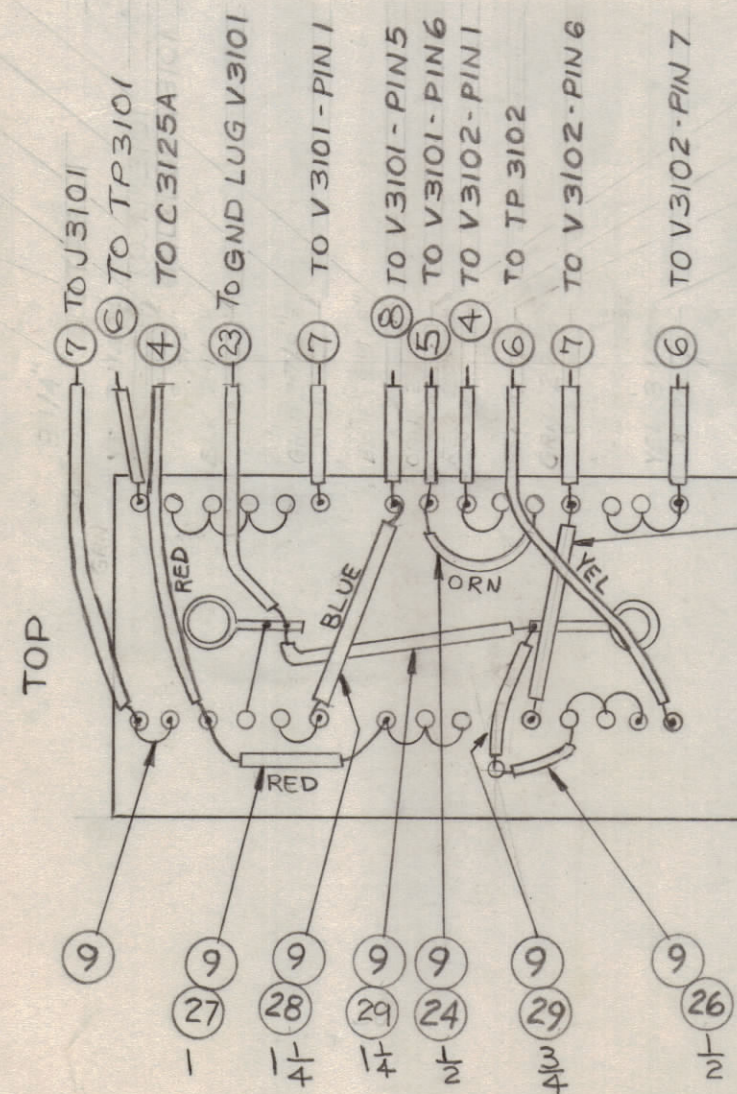


STAGE 3  
SUB ASSY (A4461-3)

REVISIONS						
ZONE	SYM	DESCRIPTION	DATE	E.M.N. NO.	DRAFT	CHKD
	Ø	ORIGINAL RELEASE FOR PRODUCTION	6/30/66	Ø	CV	File
A		REVISED C3105 WIRING BOT VIEW; TOP VIEW C3104, 5; RELOC 1 "A" HOLE; COMPLETELY REVISED A4461-2.	10-18-66	17016	R <sub>M</sub>	File
B		17.14 WAS CM35B472J (CHANGE)	8/30/72	20796	GE	Ch CV



TOP VIEW



BOTTOM VIEW

STAGE 4  
ELECTRICAL ASS'Y (A-4461-4)

SYMBOL	REQ'D.	ITEM	PART NUMBER	DESCRIPTION	SYMBOL
BLACK	1	29	PX-104-1-034	INSULATION SLEEVING, ELEC	
BLACK	1	28	PX-104-6-034		
BLUE	1	27	PX-104-3-034		
RED	1	26	PX-104-1-034		
GRN	1	25	PX-104-4-034		
ORN	1	24	PX-104-8-034	INSULATION SLEEVING ELEC	
BLACK	1	23	MWC22(7)U0	CABLE, INSULATED	
X	22	BS-100		SOLDER, SOFT	
R3112	1	21	RC20GF105J	RESISTOR, CAR. 1 MEG OHM	
R3111	1	20	RC20GF153J	RESISTOR, CAR. 15K	
R3109	1	19	RC32GF153J	RESISTOR, CAR. 15K	
R3101	1	18	RC20GF225J	RESISTOR, CAR. 2.2M	
R3110, R3108 R3102	3	17	RC20GF104J	RESISTOR, CAR. 100K	
CR3101	1	16	IN463	SILICON DIODE	
C3107	1	15	CM112F622G5S	CAP. FIXED MICA-DIELECTRIC, 6200 PF	B
C3103	1	14	CM35F472G03	CAP. FIXED MICA	
C3105	1	13	CE116-1VN	CAP. ELECT	
C3102	1	12	CC-100-16	CAP. DISC, CERAMIC	
C3104	1	11	CM15F101J03	CAP. MICA, 100 PF	
C3101 C3106	2	10	CC-100-9	CAP. DISC, CERAMIC	
X	9	WL-100-6		BUSS WIRE	
2 1/8"	8	MWC22(7)UG		WIRE, ELECTRICAL	
9"	7		5		
9 3/8"	6		4		
2 1/8"	5		3		
6 1/2"	4	MWC22(7)U2		WIRE, ELECTRICAL	
2	3	TE-116-3		SOLDER LUG	
2	2	TE-108-13		STANDOFF - RIVET TYPE	
30	1	TE-168-4-C		TERMINAL-MINIATURE, STAKE TYPE	

LIST OF MATERIAL

MATERIAL	THE TECHNICAL MATERIEL CORP. MAMARONECK, NEW YORK			
FINISH	TITLE TERMINAL BOARD ASS'Y PHANOSTRON DIVIDER			
UNLESS OTHERWISE SPECIFIED DIMENSIONS ARE IN INCHES AND INCLUDE CHEMICALLY APPLIED OR PLATED FINISHES	DRAWN C. HOFFMANN	DATE 6-1-66	FINAL APPROVAL <i>[Signature]</i>	DATE 6/30/66
	CHECKED <i>[Signature]</i>	DATE 6-11-66		
	ELECT. DES. <i>[Signature]</i>	DATE 6-28-66	A4461	
	MECH. DES. <i>[Signature]</i>	DATE	REV. LTR. B	

1. ALL SLEEVING TO BE  $\frac{1}{2}$ " SHORTER  
THAN WIRE.

NOTES

Q'TY./UNIT	MODEL USED ON	ASS'Y. NO.
1	HFS-2	AX384-2
SCALE NONE	CODE	
THE CONTENTS OF THIS DRAWING ARE THE EXCLUSIVE PROPERTY OF THE TECHNICAL MATERIEL CORP. ITS UNAUTHORIZED USE OR REPRODUCTION IN WHOLE OR IN PART IS STRICTLY FORBIDDEN.		
DECIMALS .X ± .05 .XX ± .01 .XXX ± .005	TOLERANCES	FRACTIONS ± 1/64 ANGLES ± 0° 30'