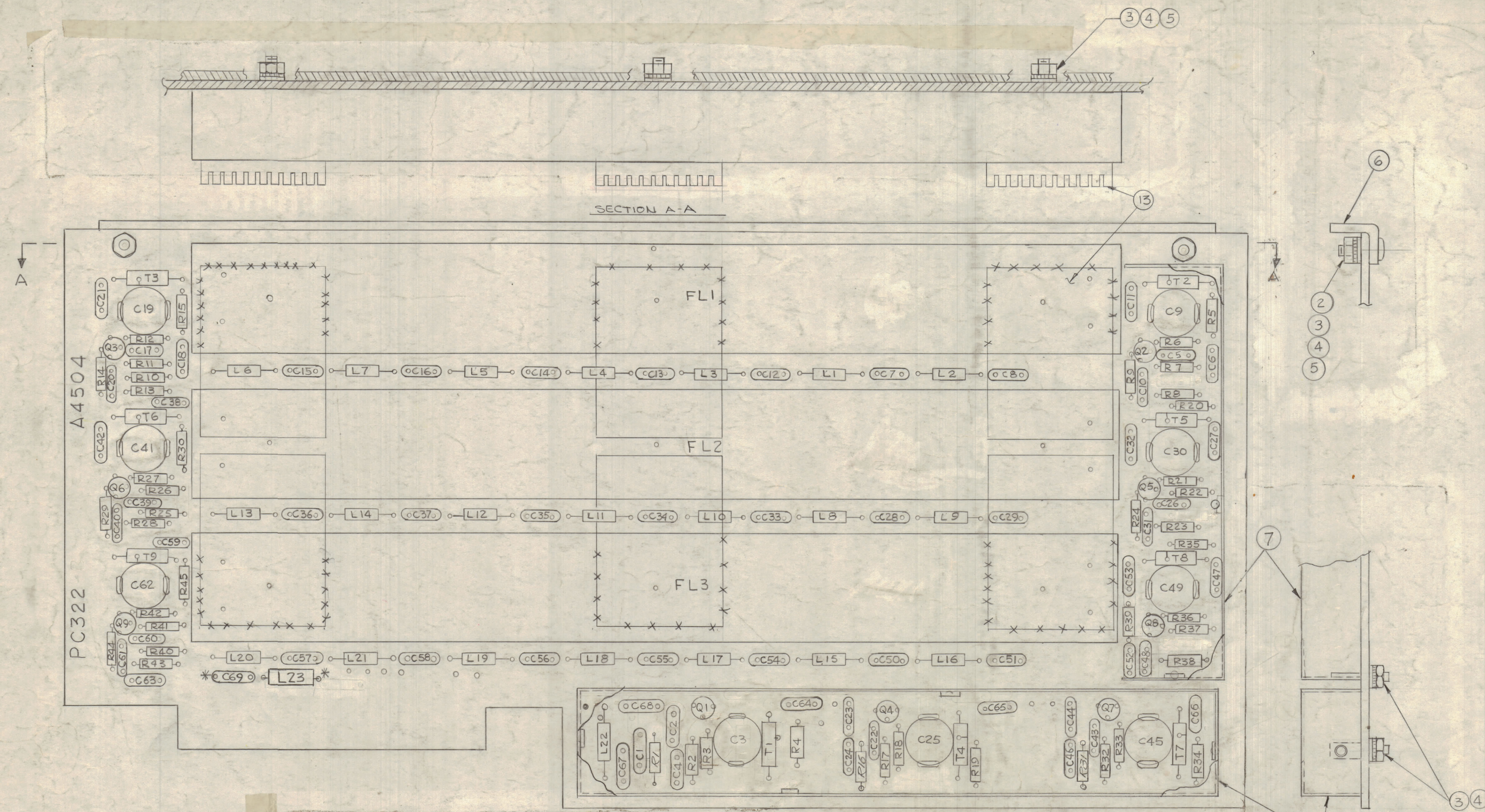


		REVISIONS					
ZONE	LTR	DESCRIPTION	DATE	E.M.N.NO	DRAFT	CHKD	APPD
	X1	C5, C26, C48 & C52 RELOCATED, 6 HOLE ADDED	10/18/67	X1	GDL		
	X2	REVISED & UPDATED	12-28-67	X2	GDL		
	Ø	ORIGINAL RELEASE FOR PROD	12/21/67	Ø	CU		
	A	DELE R1, R10, R31, R44, R47 & R48	1/1/70	19914	LL		
	B	ADDED R1, R16, R31	2/9/70	20512	GE		
	C	L23, C69 Added	7-12-70	21603	DM	K.P.	



SECTION A-A

A4504
PC322

FL1

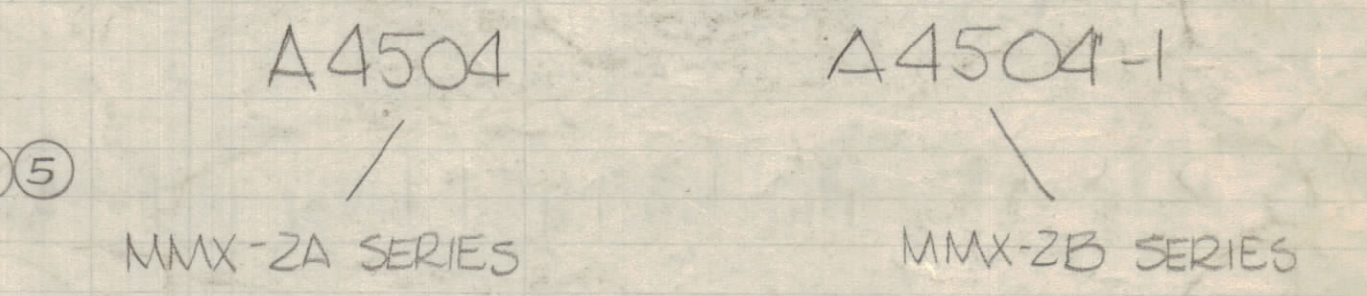
FL2

FL3

- ASSEMBLY NOTES
- 1- TO MOUNT COMPONENTS, INSERT LEADS THROUGH PLATED-THRU HOLES.
 - 2- CAUTION WHEN APPLYING HEAT AND SOLDER TO LEAD AND FOIL.
 - 3- CLEAN AND INSPECT AS PER 5676.
 - 4- FOR ELECTRICAL COMPONENT PART NUMBERS REFER TO NPL A4504
 - 5- USE SYMBOL NUMBERS FOR ASSEMBLY REFERENCE.
 - 6- SOLDER FP160 TO FILTER CASES

NOTE
* L23, C69 WILL NOT APPEAR FOR AN MMX-2A SERIES (COMPONENTS EXIST ON CONNECTOR SIDE (U11)).

L23, C69 WILL BE PRESENT FOR AN MMX-2B SERIES



QTY. REQ.	ITEM	PART NO.	DESCRIPTION	SYMBOL
6	13	FPI60E1P	CONTACT ELECTRICAL	
X	12	PX 370-1B-7	INSULATION, SLEEVING SHRINK	
X	11	WL 100-5	WIRE, ELECT. BUSS	
X	10	PX 830-1B-1	INSULATION, SLEEVING SHRINK	
X	9	RG 188/U	CABLE, RF	
1	8	BX 228	COVER, SHIELD RF	
1	7	BX 227	COVER, SHIELD RF	
1	6	MS6004/LD3094-10	STIFFENER, PRINTED CIRCUIT BOARD	
17	5	NTH0440BNG	NUT, PLAIN HEXAGONAL	
17	4	LWE04MRN	WASHER, LOCK EXTERNAL	
17	3	FW 04HBN	WASHER, FLAT	
2	2	SCBPO440BNA	SCREW, MACHINE	
1	1	PC 322	PRINTED CIRCUIT BOARD	

O. POSE		LIST OF MATERIAL	
FINAL APPROVAL	DATE	THE TECHNICAL MATERIEL CORP. MAMARONECK, NEW YORK	
MECH. DES.	DATE	ASSY PRINTED CIRCUIT BD STEP GENERATOR "B"	
ELECT. DES.	DATE	SIZE	CODE IDENT. NO. DWG. NO.
CHECKED	DATE	D	82679 A 4504
DRAWN	DATE	SCALE	2:1
		SHEET	OF

QTY / UNIT	MODEL USED ON	ASS'Y NO.
1	CHG-(14)	Z111
1	VOX-7	Z111
1	MMX-(C)	Z111

APPLICATION

CODE S401-451

NOTICE TO PERSONS RECEIVING THIS DRAWING

THE TECHNICAL MATERIEL CORPORATION claims proprietary right in the material disclosed herein. This drawing is issued in confidence for engineering information only and may not be reproduced or used to manufacture anything shown herein without permission from THE TECHNICAL MATERIEL CORPORATION to the user. This drawing is loaned for mutual assistance and is subject to recall at any time.

- ITEM 11 & 12 - JUMPER BETWEEN PIN 4 & C1
- ITEM 9-1 - COAX. BETWEEN PIN N & C23
- ITEM 9-2 - COAX. BETWEEN PIN M & C44