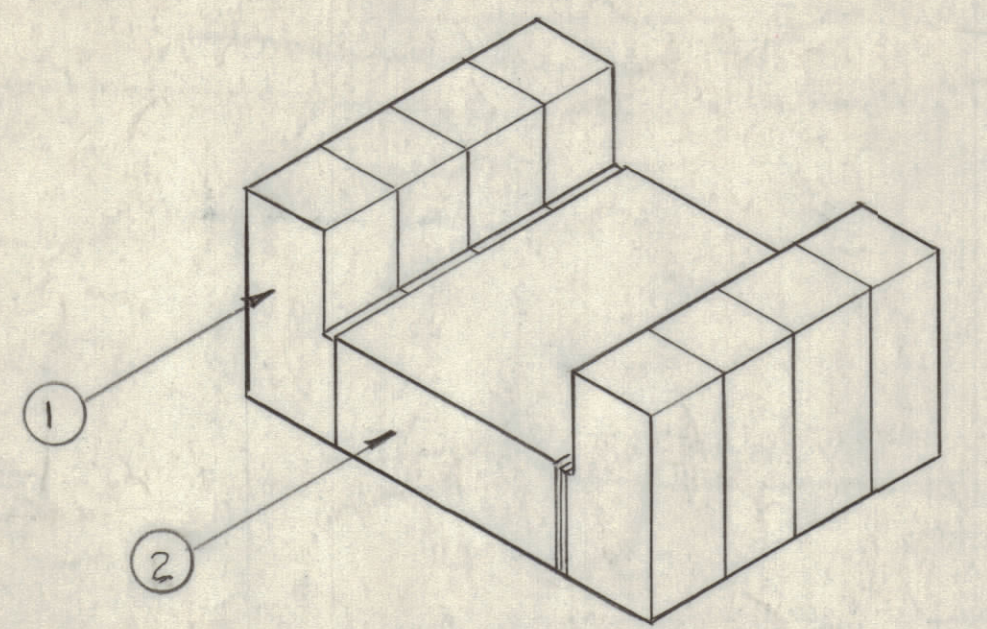
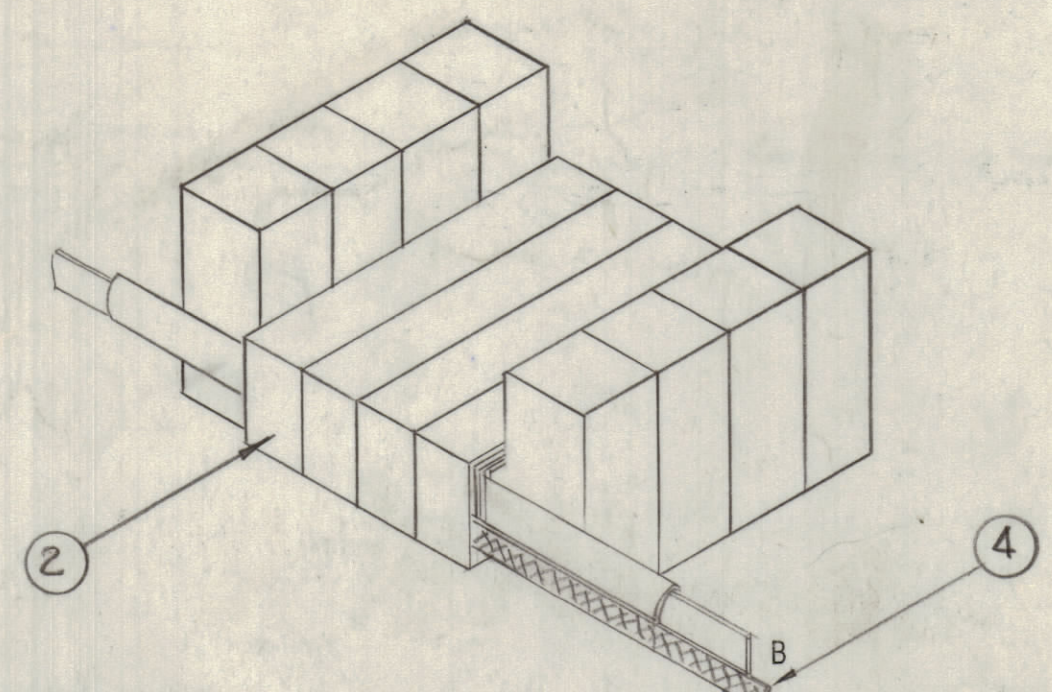


REVISIONS						
ZONE	LTR	DESCRIPTION	DATE	E.M.N.NO	DRAFT	CHKD APPD
X		EXP. RELEASE	2-28-67	X	GDL	
X		NOTE 5, & IT 17 ADDED, IT 13 WAS PX1012-2 IT 14 WAS PX1012-1, IT 15 WAS PX1011, HARDWARE IT 10, 17, 18, 19, 20, 21, 24 UPDATED	4-6-67	X		
Ø		ORIGINAL RELEASE FOR PROD	4/18/67	Ø		

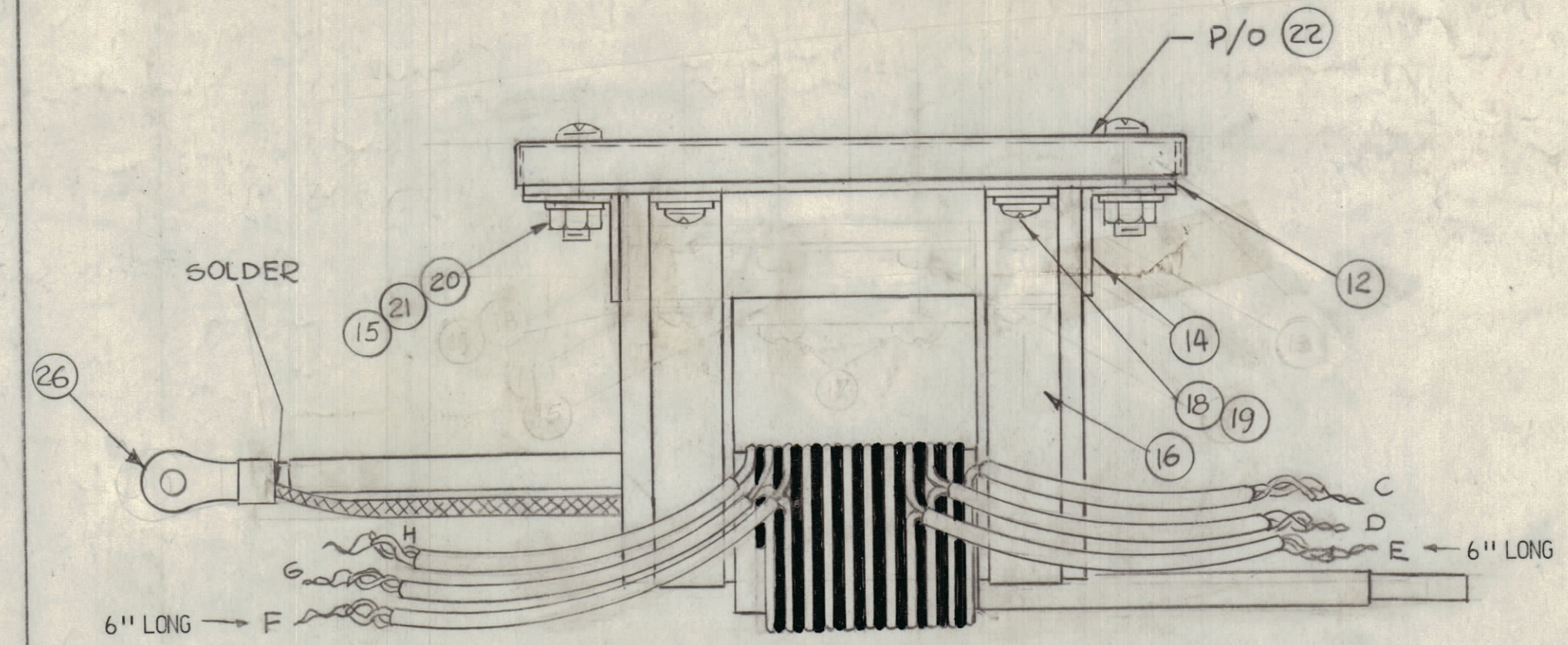
PART 1 (2REQ)



STEP 1
BIND FOUR PIECES OF ITEM 1 SECURELY TOGETHER WITH 2 LAYERS OF ITEM 2

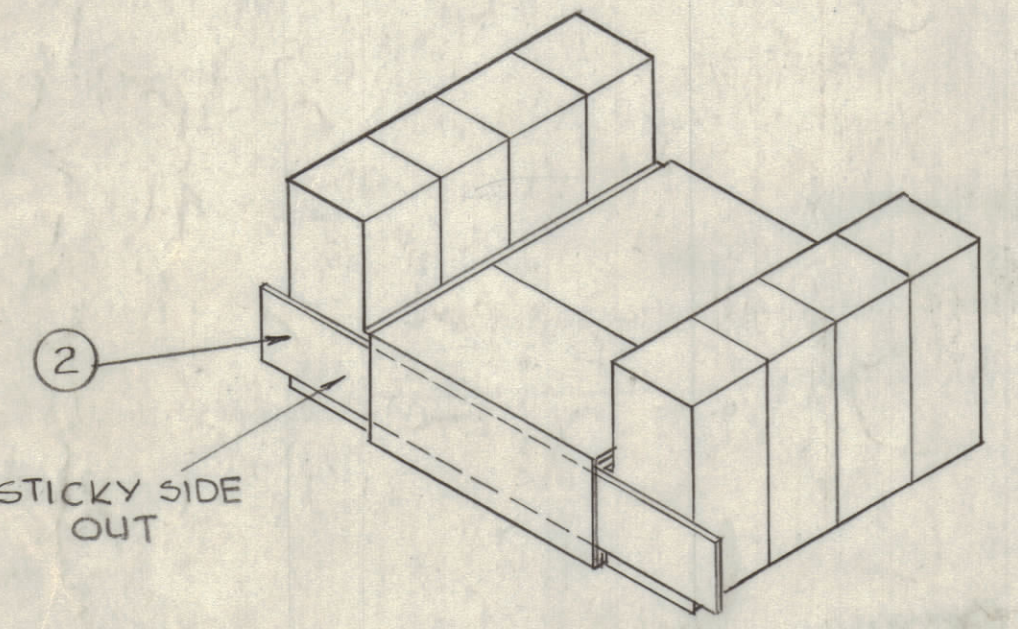


STEP 5
WITH LEAD IN POSITION SHOWN (POINT B) WIND ON SHIELD (ITEM 4). SECURE ENDS WITH SMALL PIECES OF ITEM 2. COVER SHIELD WITH TWO LAYERS OF ITEM 10 AND SECURE WITH ITEM 2.

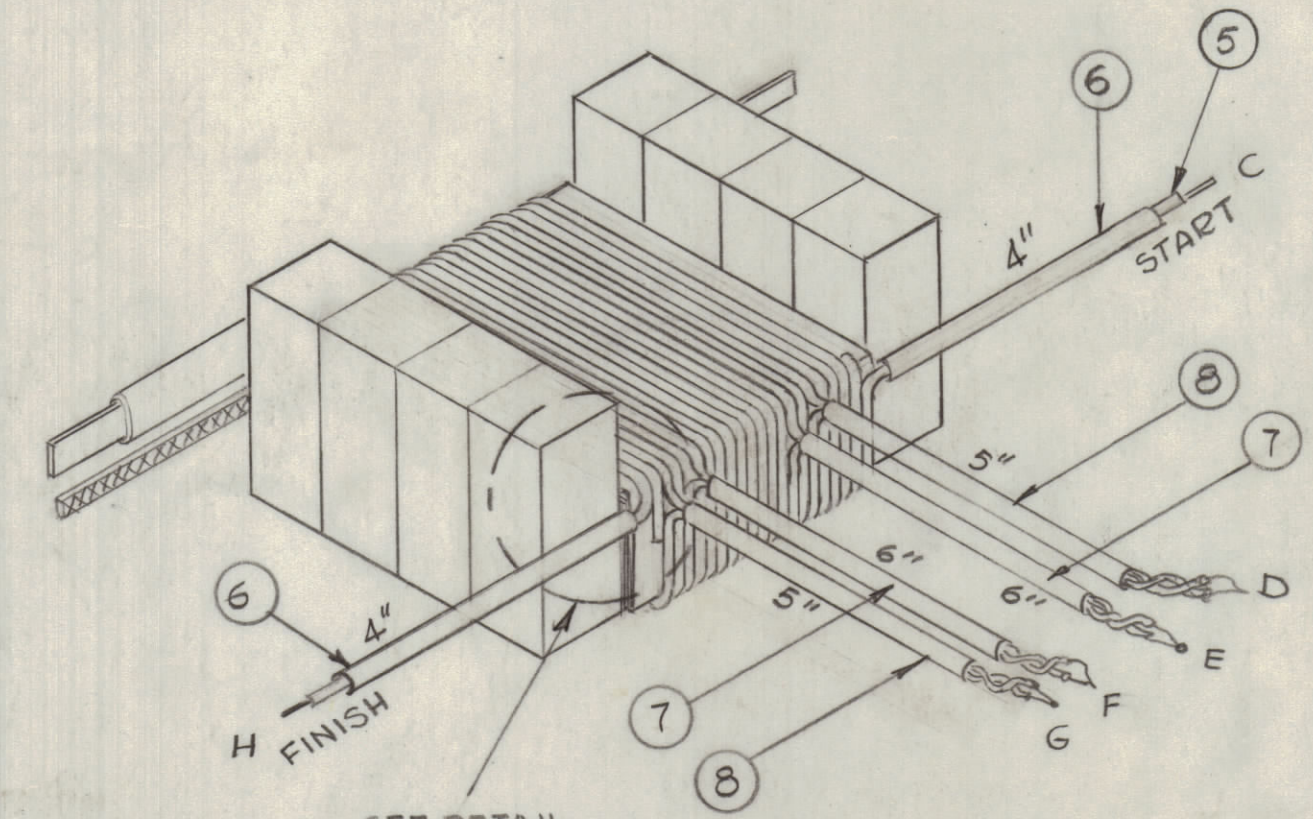


STEP 7
USING ANOTHER PART 1, FASTEN IT SECURELY TO WOUND CORE WITH AT LEAST TWO LAYERS OF ITEM 2. NOTE: THAT MATING SURFACES MUST BE CLEAN AND SMOOTH. USE ITEMS 15, 20, 21 FOR MTG ITEM 12. USE ITEM 18 & 19 FOR MTG ITEM 16 & ITEM 14

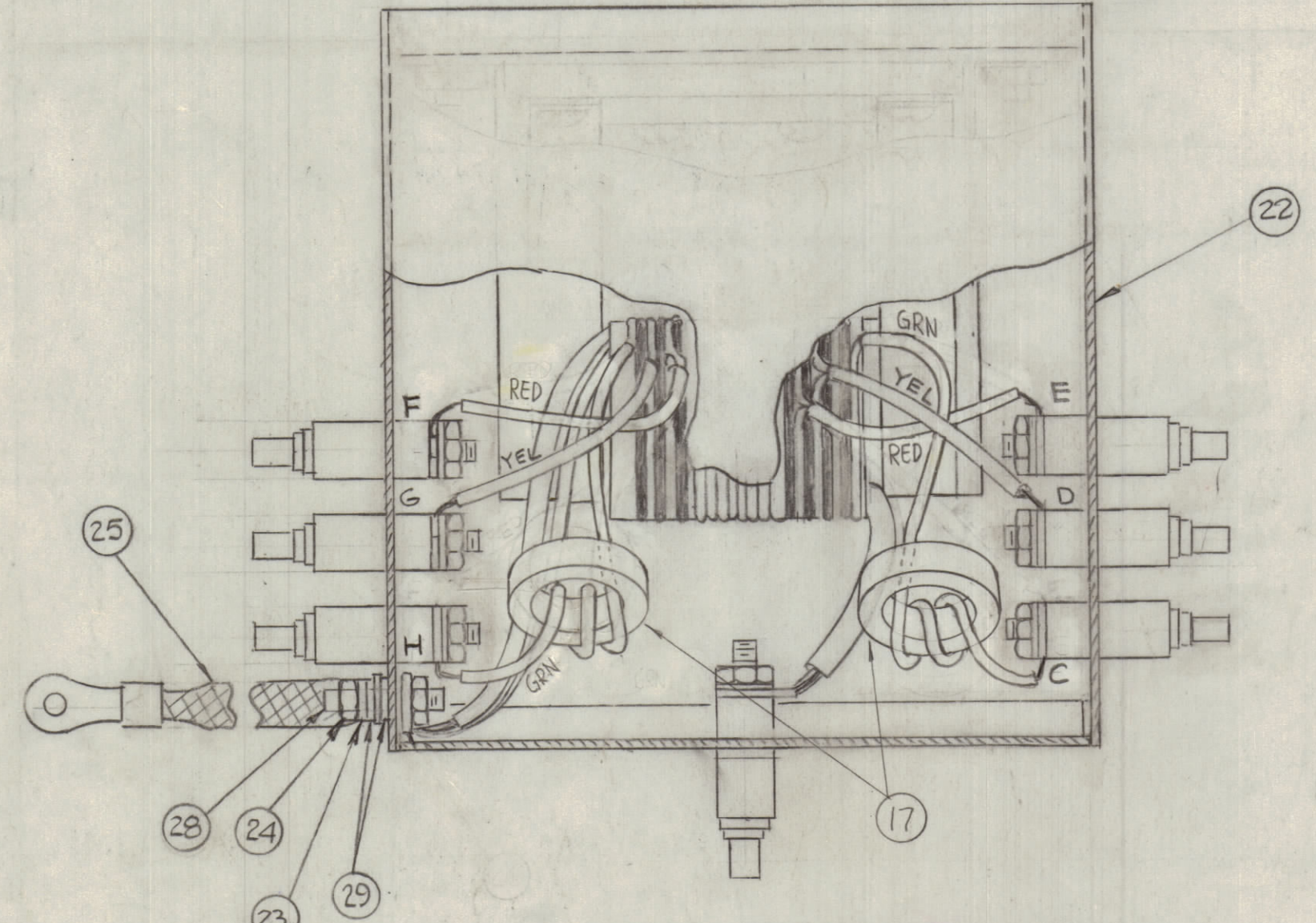
WRAP PIECES OF ITEM 2 ON ALL INNER CORNERS AS SHOWN



STEP 2
CUT A 4" STRIP OF ITEM 2 IN HALF (LENGTH WISE) AND APPLY AS SHOWN

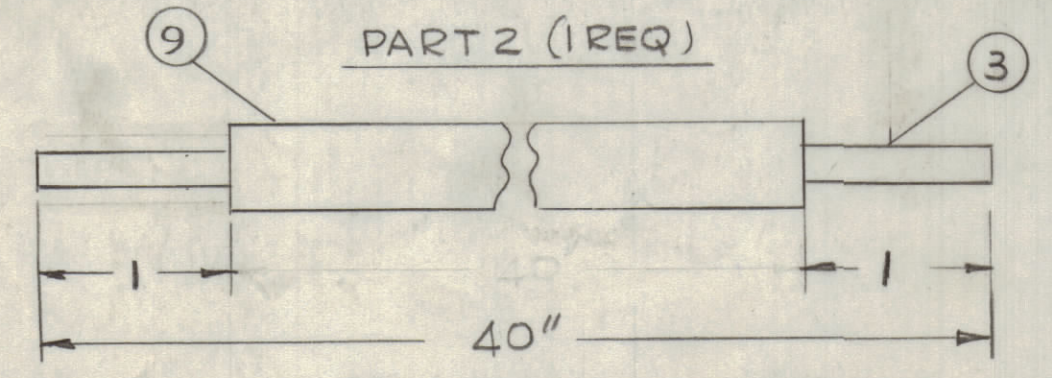


STEP 6
STARTING AT POINT C WIND ON ITEM 5 AS SHOWN ABOVE. SECURE ENDS WITH SMALL PIECES OF TAPE (ITEM 2) SLIP ON SLEEVING AS INDICATED COAT WINDING WITH ITEM 31 (GL112) SECURE POINTS C & H WITH ITEM 2. BETWEEN SECONDARY WINDINGS SEPARATE WITH TEFLON TUBING ITEM 11. AS SHOWN IN DETAIL "A-A"

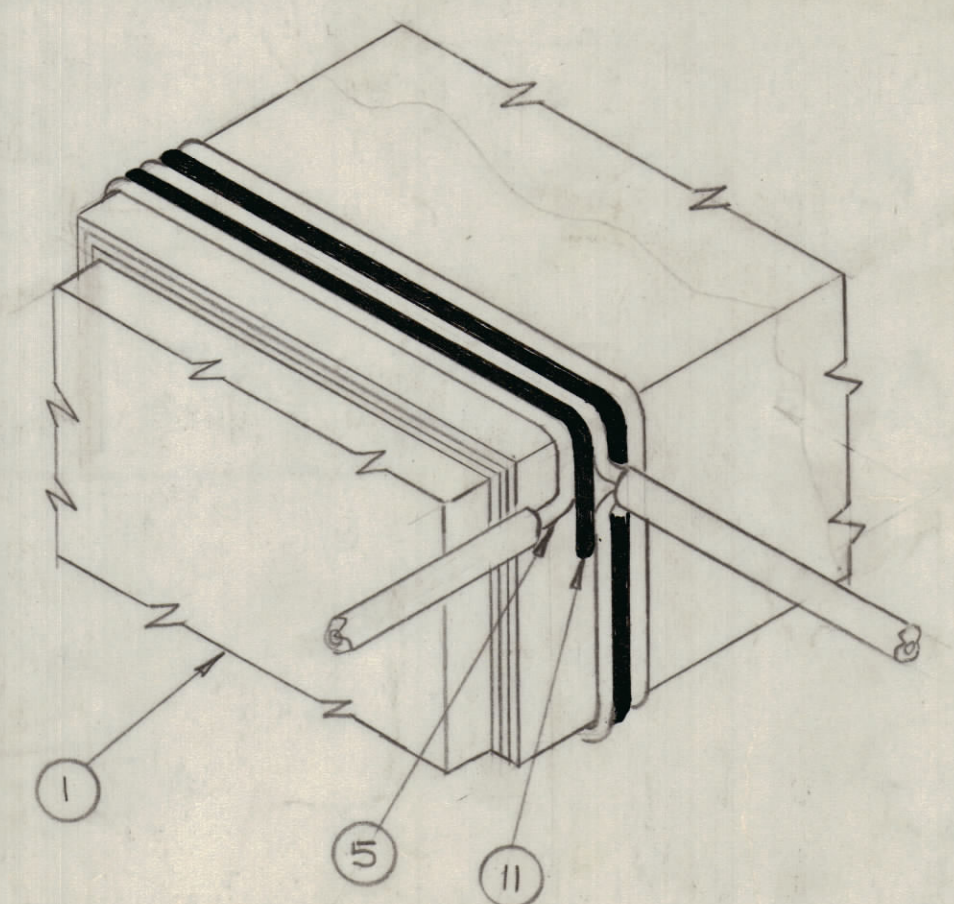


- FABRICATION
1. AFFIX XFMR SUB-ASSY TO BOTTOM COVER WITH ITEMS 20 & 21
 2. CONNECT COLOR CODED LEADS AS SHOWN & SOLDER.
 3. CONNECT PRIMARY TO 50 Ω TERMINAL AS SHOWN. AFFIX INTERNAL GROUND TO CASE AS SHOWN.
 4. INSERT BOTTOM COVER & XFMR SUB-ASSY AND TOP COVER INTO CASE AS SHOWN.
 5. WINDINGS ON TOROID TO BE 2 TURNS CLOCKWISE WIDELY SPACED
 6. TEST AS PER TMC SPEC S1169.
 7. SEAM SOLDER TOP & BOTTOM COVERS TO CASE AND SMOOTH ALL SEAMS.
 8. PAINT ENTIRE UNIT WITH TMC SMOOTH GREY ENAMEL (S115).
 9. ATTACH IDENTIFICATION PLATE AS INDICATED. (ITEM 30)

QTY.	REQ.	ITEM	PART NO.	DESCRIPTION	SYMBOL
X	31	GL112		INSULATING VARNISH ELECTRICAL	
1	30	NP542		PLATE, IDENTIFICATION	
2	29	FW08HBN		WASHER, FLAT	
1	28	SM0832BN.Ø75		STUD, CONT THD	
X	27	BS100		SOLDER TIN ALLOY	
1	26	TE141-2		TERMINAL, LUG	
1	25	CA409-95-2.25		LEAD, ELECT	
5	24	NTH0832BN10		NUT, PLAIN, HEX	
1	23	LWS08MRN		WASHER, LOCK, SPLIT	
1	22	BX220		CASE/COVERS	
4	21	FW08LBN		WASHER, LOCK	
4	20	NTHP832BN10		NUT, HEX	
8	19	LW108MRN		WASHER, LOCK TNY	
8	18	SCBP0832BN5		SCREW, MACHINE	
2	17	CT100-4-Q1		CORE, TOROID	
2	16	MS6096		STRAP, TIEDOWN, XFMR	
4	15	SCBP0832BN10		SCREW, MACHINE	
2	14	MS5105		BKT, XFMR SUPPORT	
		13	DELETED		
1	12	PX1010		PLATE, MTG, XFMR	
X	11	PX370-20-0		TUBING TEFLON	BLK
15.5"	10	PX669-3		TEFLON SHEET	
3.8"	9	PX370-6-7-38		INSULATION SLEEVING, TEFLON SIZE 6	NAT
5"	8	PX104-2-133		INSULATION SLEEVING SIZE 8	YEL
6"	7	PX104-3-133		INSULATION SLEEVING SIZE 8	RED
4"	6	PX104-4-133		INSULATION SLEEVING SIZE 8	GRN
X	5	WI125-1		WIRE, EL, MAG H CEP	
1	4	A4579		SHIELD ASSY	
40"	3	MS283-3-5		COPPER STRAP 3/16 X .025	
X	2	TA108-9		INSULATION TAPE, ELEC SIZE 1-1/2	
8	1	CT101-3-Q		CORE, U	

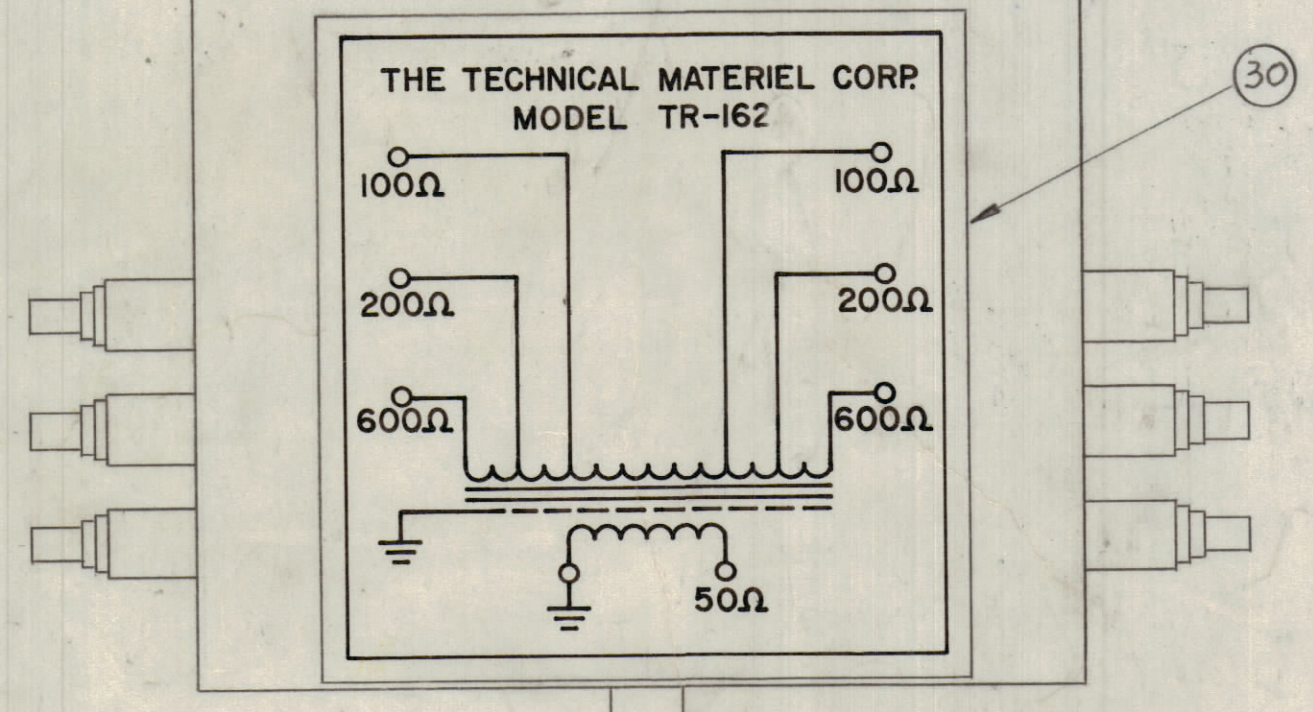


STEP 3
SLIP ITEM 3 THRU ITEM 9 AS SHOWN
NOTE: TEFLON SLEEVING TO BE PRESSED FLAT PRIOR TO INSERTION OF ITEM 3



STEP 4
STARTING AT POINT A WIND ON FOUR TURNS COUNTER CLOCKWISE OR PART 2 SECURE ENDS BY WRAPPING TWO ENDS OF ITEM 2 IN STEP 2 AROUND WINDINGS. (C) THEN WRAP ENTIRE WINDING WITH TWO LAYERS OF ITEM 10 SECURE WITH ITEM 2.
NOTE: PRIMARY WINDING MUST BE WOUND VERY TIGHTLY ONTO CORE.

DETAIL "A-A"



THE TECHNICAL MATERIEL CORP MODEL TR-162		
100Ω	100Ω	
200Ω	200Ω	
600Ω	600Ω	
	50Ω	

UNLESS OTHERWISE SPECIFIED DIMENSIONS ARE IN INCHES AND INCLUDE CHEMICALLY APPLIED OR PLATED FINISHES	
TOLERANCES ON	
DECIMALS	FRACTIONS
.X ± .05	± 1/64
.XX ± .01	ANGLES
.XXX ± .005	± 0°-30'

L. BUTLER		DATE	
MECH. DES.		DATE	
ELECT. DES.		DATE	
CHECKED		DATE	
DRAWN		DATE	
MATERIAL		DATE	
FINISH		DATE	

QTY.	REQ.	ITEM	PART NO.	DESCRIPTION	SYMBOL

1	TR162A	
QTY / UNIT	MODEL USED ON	ASS'Y NO.
APPLICATION		
	CODE	
	A	

NOTICE TO PERSONS RECEIVING THIS DRAWING
THE TECHNICAL MATERIEL CORPORATION claims proprietary right in the material disclosed hereon. This drawing is issued in confidence for engineering information only and may not be reproduced or used to manufacture anything shown hereon without permission from THE TECHNICAL MATERIEL CORPORATION to the user. This drawing is loaned for mutual assistance and is subject to recall at any time.

THE TECHNICAL MATERIEL CORP. MAMARONECK, NEW YORK	
TRANSFORMER ASSY TR162	
SIZE	CODE IDENT. NO. DWG NO.
D	82679 A4577
SCALE	DO NOT SCALE
SHEET	OF