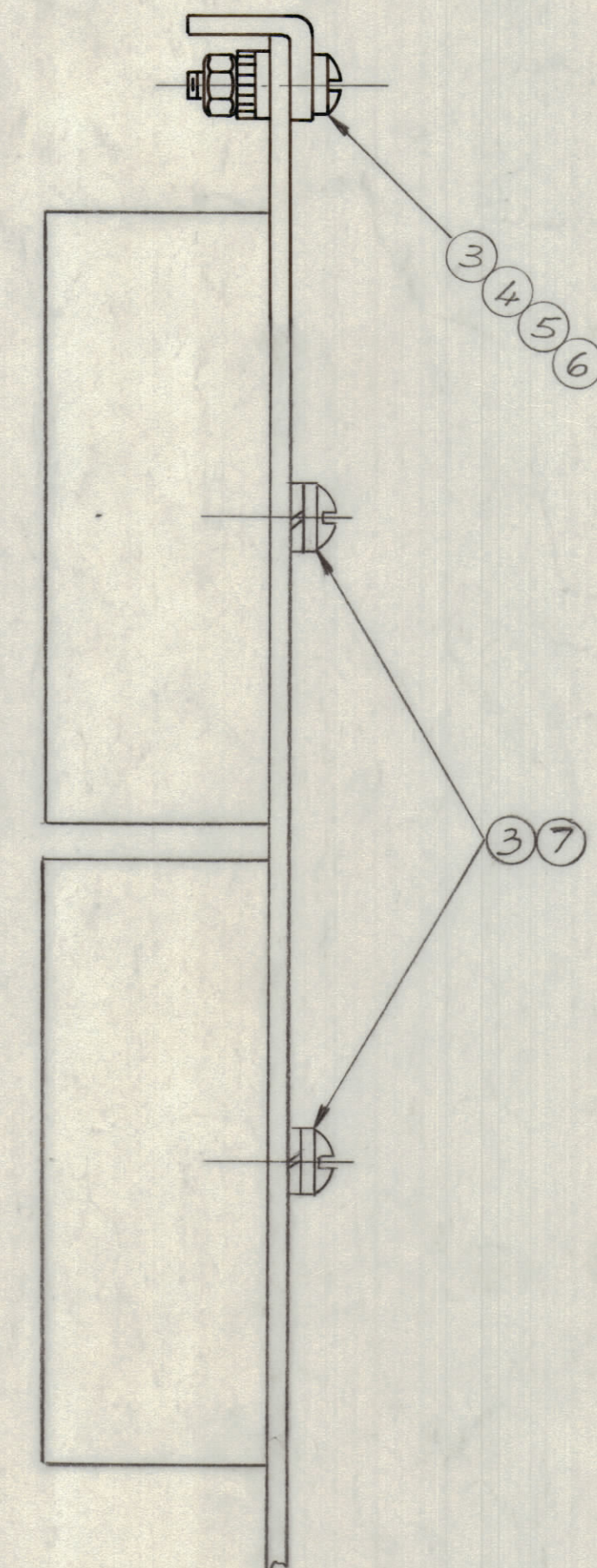
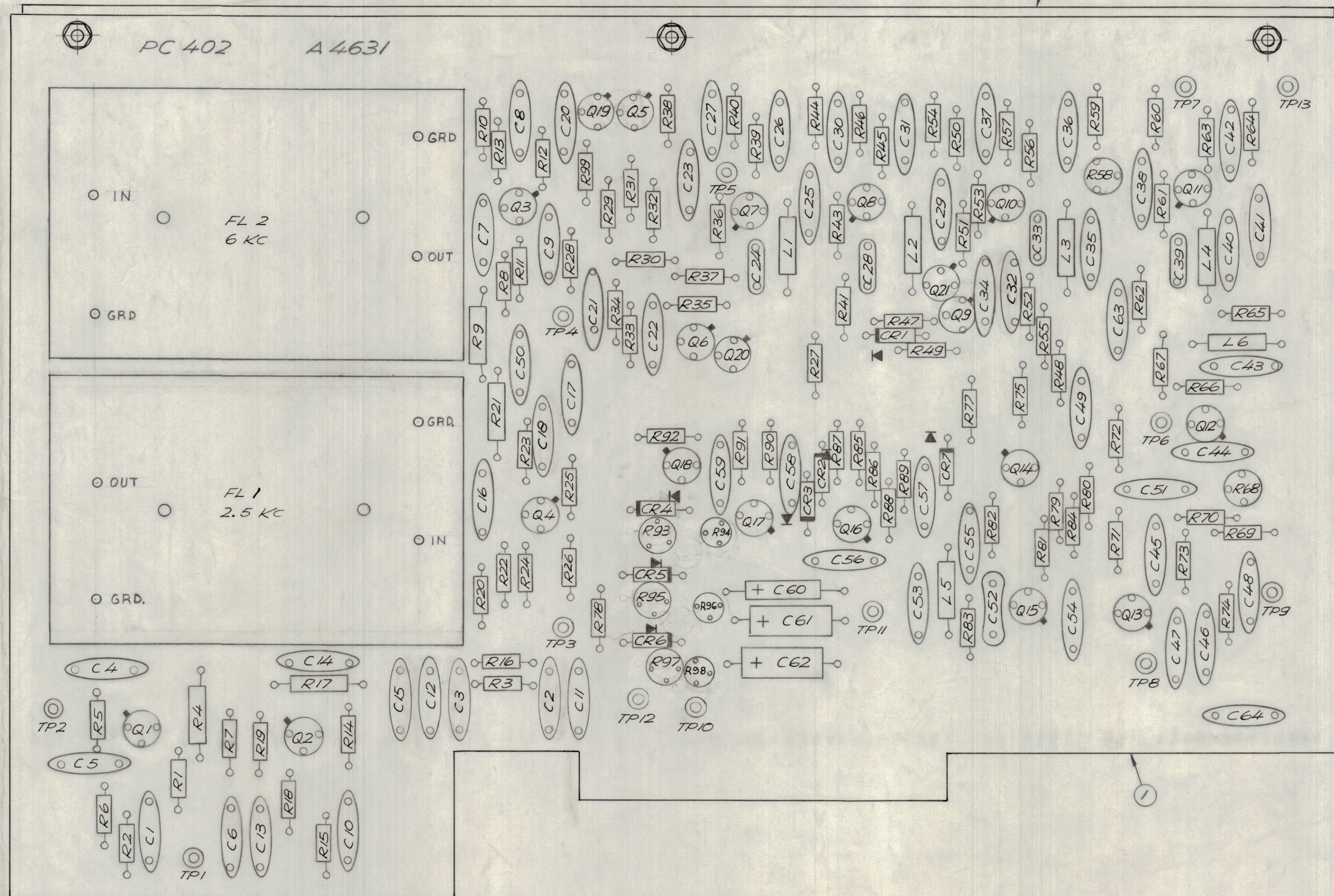


REVISIONS						
ZONE	LTR	DESCRIPTION	DATE	E.M.N.NO	DRAFT	CHKD APPD
X		EXP. RELEASE	2/2/69			KH
X1		REVISED R93-R98 + R26	2/2/69			KD
		ORIGINAL RELEASE FOR PROB	2/2/69			KD
A		REVISED	1/10/70	20090	RZ	



63 Fig 5-61  
64 Fig 5-60

**ASSEMBLY NOTES**

1. TO MOUNT COMPONENTS, INSERT LEADS THROUGH PLATED THRU-HOLES
2. CAUTION, WHEN APPLYING HEAT AND SOLDER TO LEAD AND FOIL.
3. CLEAN AND INSPECT AS PER SPEC. S 676.
4. FOR ELECTRICAL COMPONENT PART NUMBERS REFER TO NPL A 4631
5. USE SYMBOL NUMBERS FOR ASSEMBLY REFERENCE

QTY. REQ.	ITEM	PART NO.	DESCRIPTION	SYMBOL
X	8	BS 100	SOLDER, TIN ALLOY	
4	7	LWS 04 MRN	LOCKWASHER, SPRING TYPE	
3	6	NTH 0440 BNG	NUT, PLAIN HEXAGONAL	
3	5	LWE 04 MRN.	WASHER, LOCK EXTERNAL	
3	4	FW 04 HBN	WASHER, FLAT	
7	3	SCRP 0440BNA	SCREW MACHINE	
1	2	MS 5333	STIFFENER, PRINTED CIRCUIT BD.	
1	1	PC 402	PRINTED CIRCUIT BOARD	

LIST OF MATERIAL			
UNLESS OTHERWISE SPECIFIED DIMENSIONS ARE IN INCHES AND INCLUDE CHEMICALLY APPLIED OR PLATED FINISHES		FINAL APPROVAL <i>[Signature]</i>	DATE 2/2/69
TOLERANCES ON		MECH. DES.	DATE
DECIMALS	FRACTIONS	ELECT. DES.	DATE
.X ± .05	± 1/64	CHECKED <i>[Signature]</i>	DATE 2/2/69
.XX ± .01	ANGLES	DRAWN <i>[Signature]</i>	DATE 2/2/69
.XXX ± .005	± 0°-30'		
MATERIAL		THE TECHNICAL MATERIEL CORP. MAMARONECK, NEW YORK	
FINISH		ASSY. PRINTED CIRCUIT BD. SYMETRICAL I.F.	
		SIZE	ISSUE
		D 82679	A
		CODE IDENT. NO. DWG NO.	
		82679 44631	
		SCALE 2:1	SHEET OF

APPLICATION		
1	MSAR - 4	BMA 309
QTY / UNIT	MODEL USED ON	ASSY NO.
NOTICE TO PERSONS RECEIVING THIS DRAWING		
THE TECHNICAL MATERIEL CORPORATION claims proprietary right in the material disclosed hereon. This drawing is issued in confidence for engineering information only and may not be reproduced or used to manufacture anything shown hereon without permission from THE TECHNICAL MATERIEL CORPORATION to the user. This drawing is loaned for mutual assistance and is subject to recall at any time.		