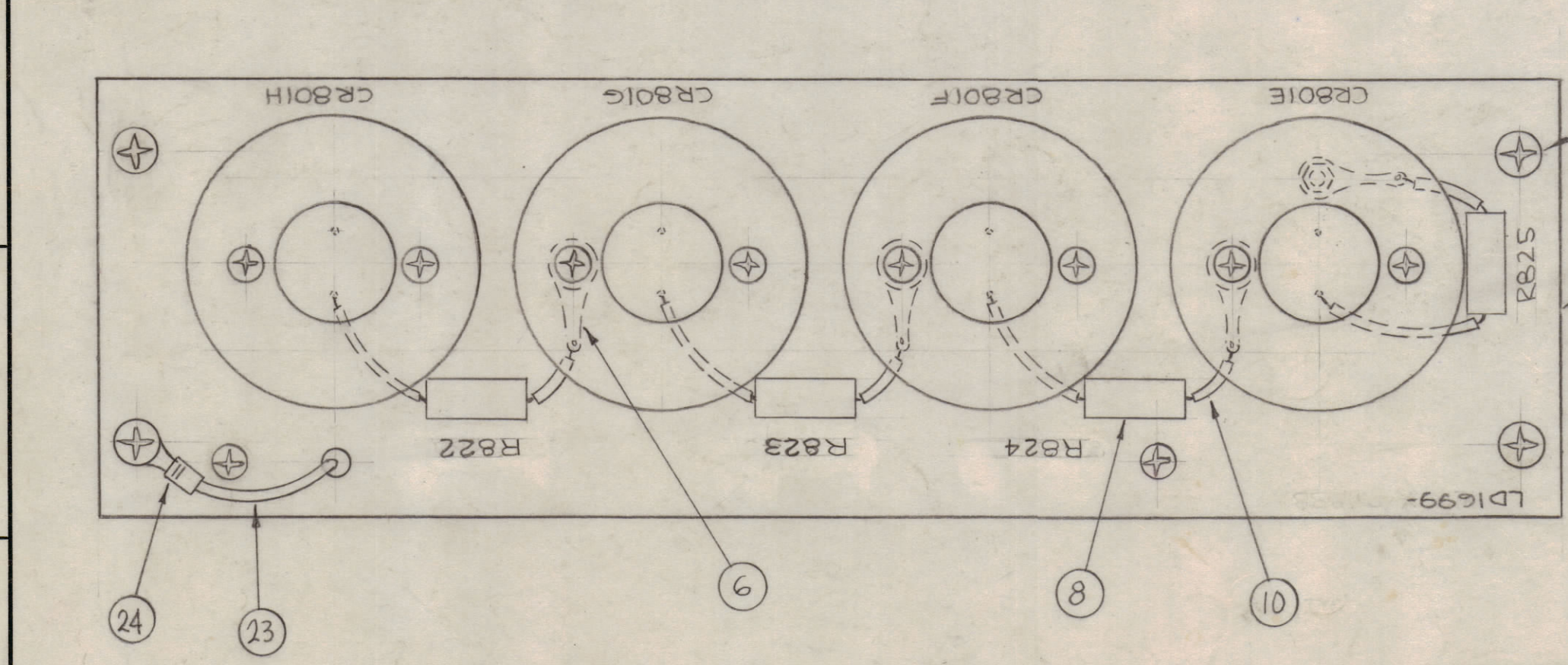
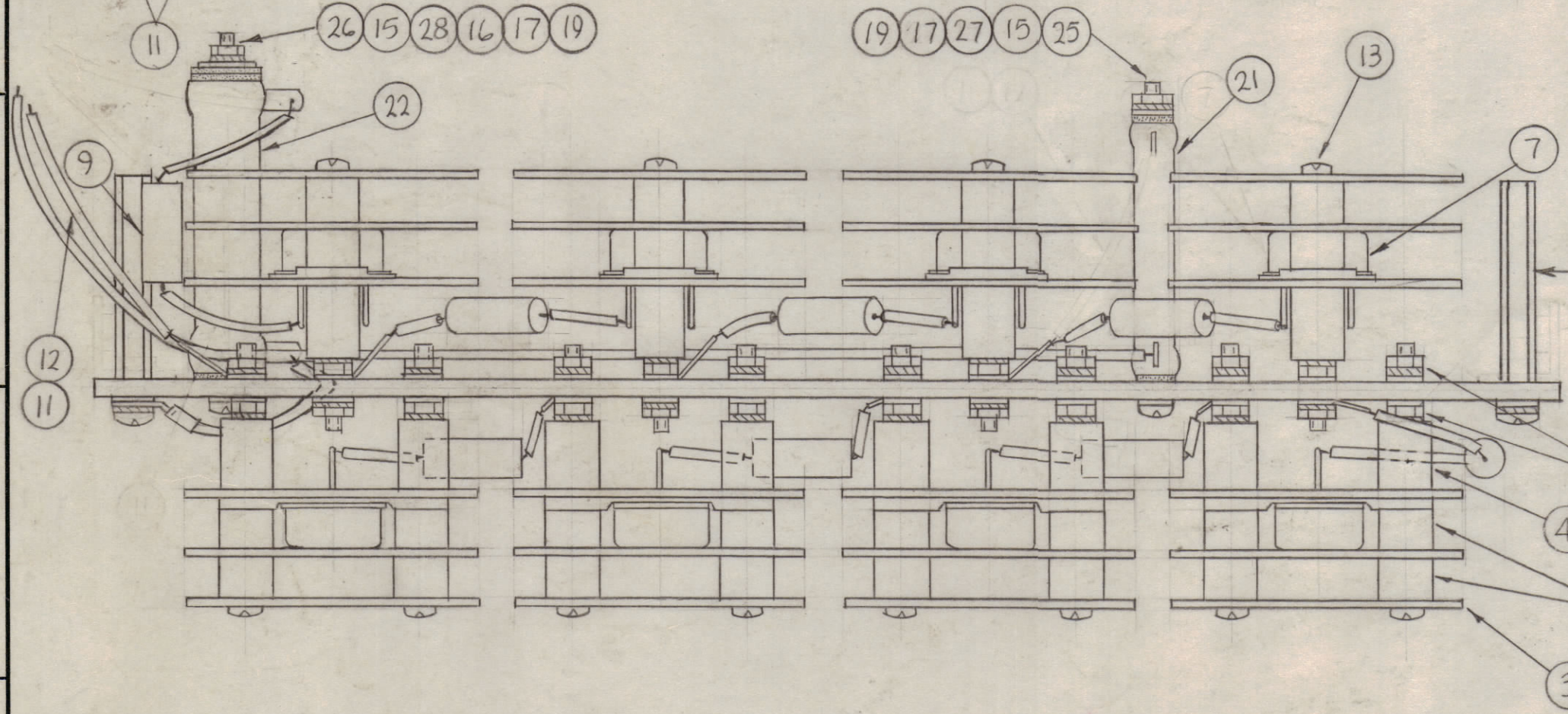
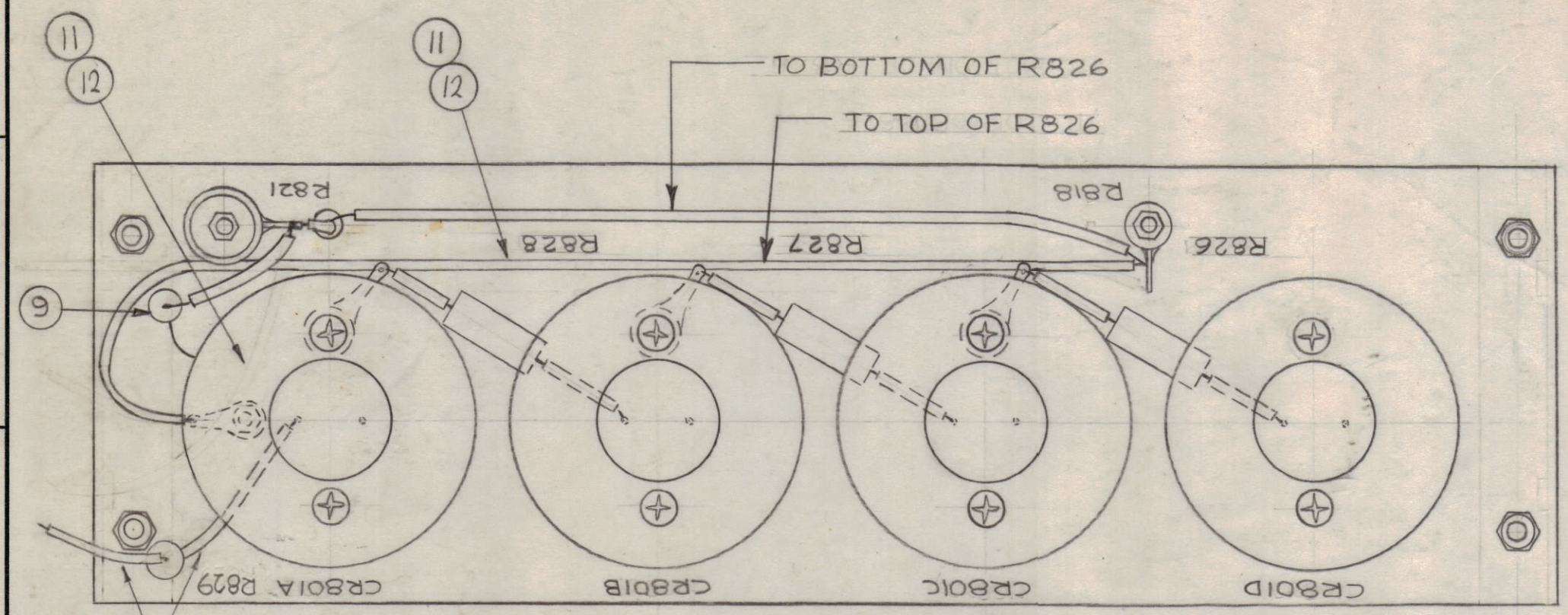


REVISIONS							
ZONE	SYM	DESCRIPTION	DATE	E.M.N. NO.	DRAFT	CHKD	APPD
X		EXP. RELEASE	1-18-68			RG	RG
XI		ITEM 21 WAS RW107-16	9-23-68			DA	DA
		ORIGINAL RELEASE FOR PRODUCTION	3-7-69			RG	RG



REQ'D.	ITEM	PART NUMBER	DESCRIPTION	SYMBOL
3	28	WA102-5	WASHER, SHLD-NM	
2	27	WA102-4	WASHER, SHLD-NM	
1	26	SCBP0632BN 39	SCREW, MACHINE	
1	25	SCBP0632BN 35	SCREW, MACHINE	
1	24	TE15C-32951	TERM, LUG, INS. #8	
X	23	MWC18(16)U2	WIRE, ELECT, INS.	
1	22	RW110-43	RES, FXD, WW-20W	R821
1	21	RW107-23	RES, FXD, WW-5W	R818
X	20	BS100	SOLDER, TIN ALLOY	
34	19	NTH0632BN8	NUT, PLAIN, HEX	
4	18	LWE08MRN	WASHER, LOCK, EXTERNAL	
34	17	LWE06MRN	WASHER, LOCK, EXTERNAL	
5	16	FW08HBN	WASHER, FLAT	
27	15	FW06HBN	WASHER, FLAT	
4	14	SCBP0832BN8	SCREW, MACHINE	
16	13	SCBP0632BN 28	SCREW, MACHINE	
X	12	WL100-5	WIRE, ELECT. BUSS	
X	11	PX370-14-7-16.250	INS. SLVG. TEFLON	
1	9	RC42GF221J	RES, FXD, COMP.	R829
7	8	RC42GF101J	RES, FXD, COMP.	
1	7	VR100S/8-1600-S	DIODE, SILICON, ZENER TYPE, 50 WATT	CR801A, B, C, D, E, F, G, H
8	6	TE104-2	TERM. LOCKING #6	
32	5	TE117-11	SPACER, SLV.	
16	4	TE117-13	SPACER, SLV.	
24	3	MS1498	PLATE, CONNECTOR	
4	2	TE0832AE3,00HG	POST, ELEC-MECH	
1	1	LD1699- /PX888-	ZENER BOARD, TOP	

F. BUDETTI LIST OF MATERIAL			
MATERIAL		THE TECHNICAL MATERIEL CORP. MAMARONECK, NEW YORK	
FINISH		TITLE SEMICONDUCTOR, DEVICE SET ASS'Y	
DRAWN	DATE	FINAL APPROVAL	DATE
CHECKED	DATE		
ELECT. DES.	DATE		
MECH. DES.	DATE		
SHEET		REV. LTR.	

Q'TY./UNIT	MODEL USED ON	ASS'Y. NO.
1	BCT-10KA	AX681
SCALE	CODE	
1:1	A	

NOTES

THE CONTENTS OF THIS DRAWING ARE THE EXCLUSIVE PROPERTY OF THE TECHNICAL MATERIEL CORP. ITS UNAUTHORIZED USE OR REPRODUCTION IN WHOLE OR IN PART IS STRICTLY FORBIDDEN.

UNLESS OTHERWISE SPECIFIED DIMENSIONS ARE IN INCHES AND INCLUDE CHEMICALLY APPLIED OR PLATED FINISHES

DECIMALS: .X ± .05, .XX ± .01, .XXX ± .005
 FRACTIONS: ± 1/64
 ANGLES: ± 0° 30'