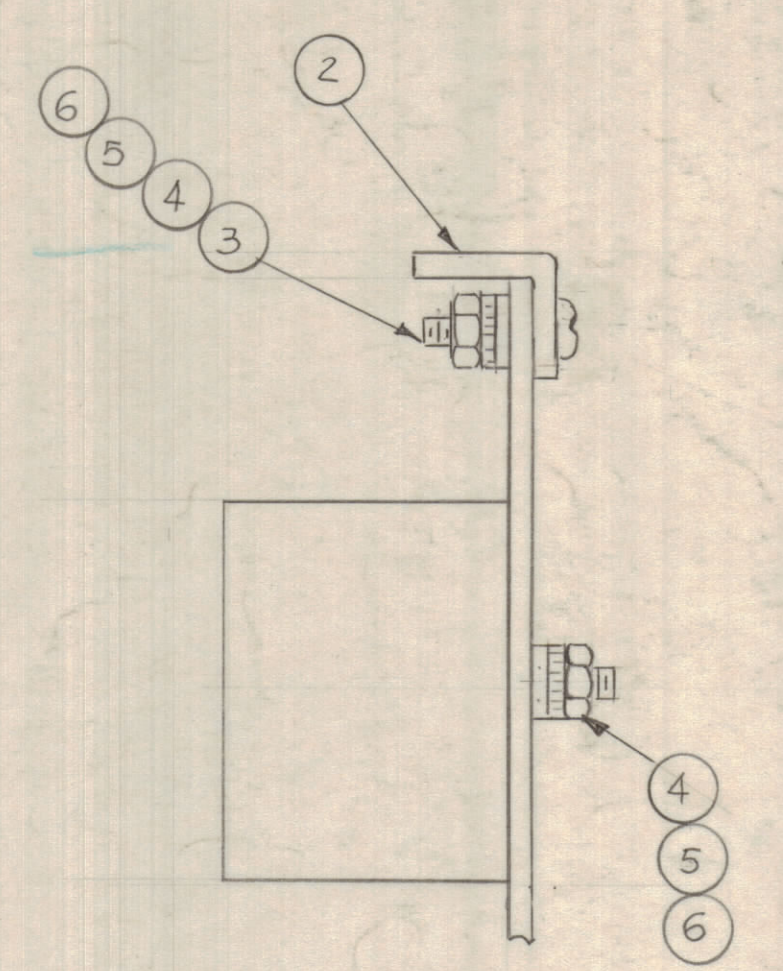
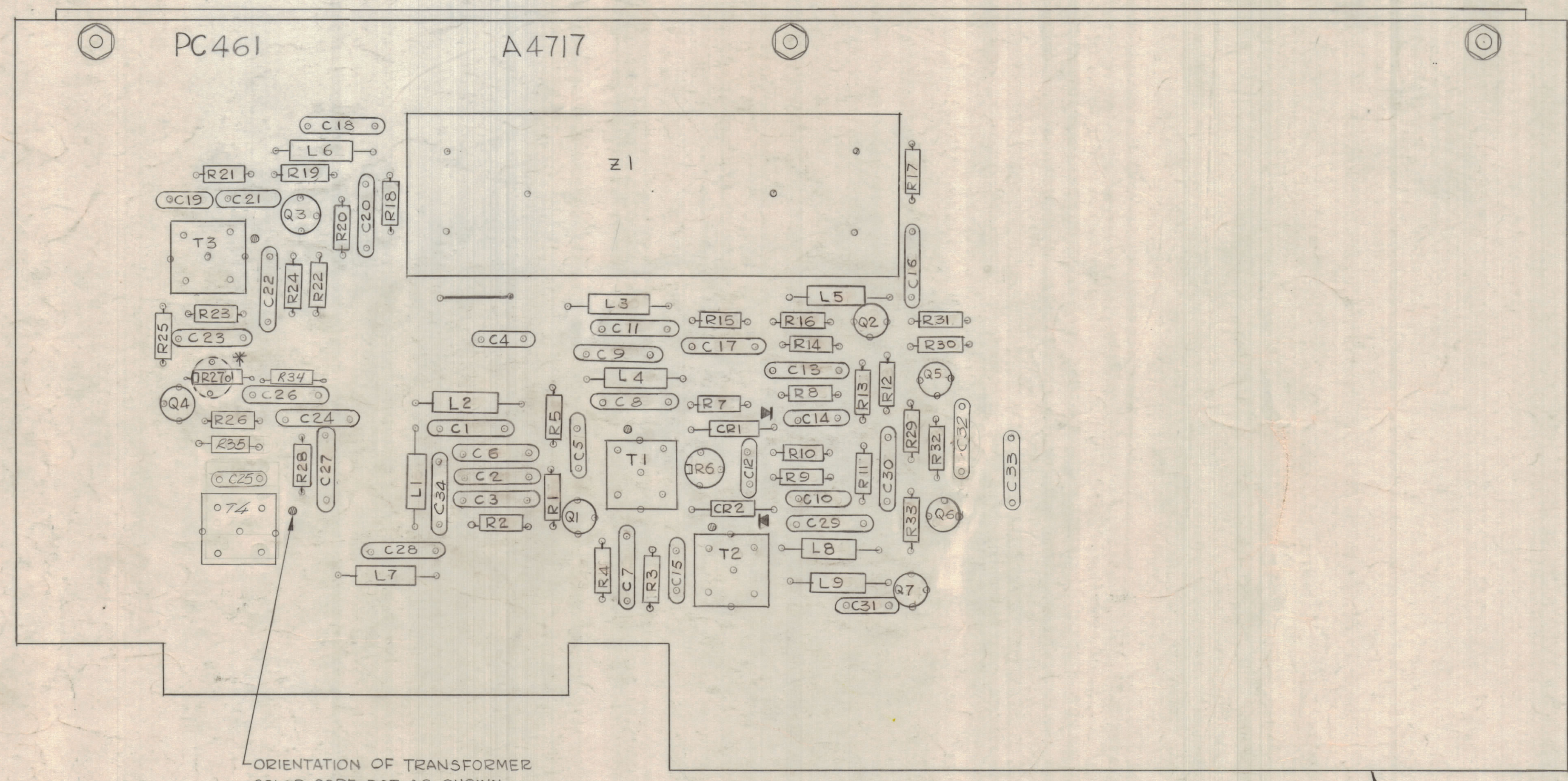


		REVISIONS					
ZONE	LTR	DESCRIPTION	DATE	E.M.N.NO	DRAFT	CHKD	APPD
X		EXP. RELEASE	8-9-68		G.D.L.		
XI		R34 DELETED	11/10/68	XI	J.A.		
Ø		ORIGINAL RELEASE FOR PROD.	10-1-68		K.G.		
A		ADD R35, C32, 33	8-4-68		G.E.		
B		R27 CLARIFIED, R34 ADDED	11/17/72	20590	Ø		
C		CHG C29 TO C34 (NEXT TO L1)	11/27/72	20911	G.E.		



**ASSEMBLY NOTES**

- 1- TO MOUNT COMPONENTS, INSERT LEADS THROUGH PLATED THRU-HOLES.
- 2- CAUTION, WHEN APPLYING HEAT AND SOLDER TO LEAD AND FOIL.
- 3- CLEAN AND INSPECT AS PER SPEC. 5676.
- 4- FOR ELECTRICAL COMPONENT PART NUMBERS REFER TO NPL A4717
- 5- USE SYMBOL NUMBERS FOR ASSEMBLY REFERENCE.
- \* 6- IF A VARIABLE R27 IS USED, THE FIXED R27 & R34 SHOULD BE DELETED

QTY. REQ.	ITEM	PART NO.	DESCRIPTION	SYMBOL
X	7	B5100	SOLDER, TIN ALLOY	
5	6	NTH0440BN6	NUT, PLAIN HEXAGONAL	
5	5	LWEO4 MRN	WASHER, LOCK EXTERNAL	
5	4	FWO4 HBN	WASHER, FLAT	
3	3	SCBP0440BN4	SCREW MACHINE	
1	2	MS 6004	STIFFENER, PRINTED CIRCUIT BD	
1	1	PC461	PRINTED CIRCUIT BOARD	

O. POSE		LIST OF MATERIAL			
FINAL APPROVAL	DATE	THE TECHNICAL MATERIEL CORP. MAMARONECK, NEW YORK			
MECH. DES.	DATE	ASSY PRINTED CIRCUIT BD CONVERTER & ALDC			
ELECT. DES.	DATE				
CHECKED	DATE				
DRAWN	DATE	SIZE	CODE IDENT. NO.	DWG NO.	ISSUE
G.D.L.	8-9-68	D	82679	A4717	C
MATERIAL		SCALE 2:1		SHEET OF	
FINISH					

QTY / UNIT	MODEL USED ON	ASSY NO.
1	MFE-1	
1	SME-6	
APPLICATION		
CODE	5401-451	
NOTICE TO PERSONS RECEIVING THIS DRAWING		
THE TECHNICAL MATERIEL CORPORATION claims proprietary right in the material disclosed hereon. This drawing is issued in confidence for engineering information only and may not be reproduced or used to manufacture anything shown hereon without permission from THE TECHNICAL MATERIEL CORPORATION to the user. This drawing is loaned for mutual assistance and is subject to recall at any time.		