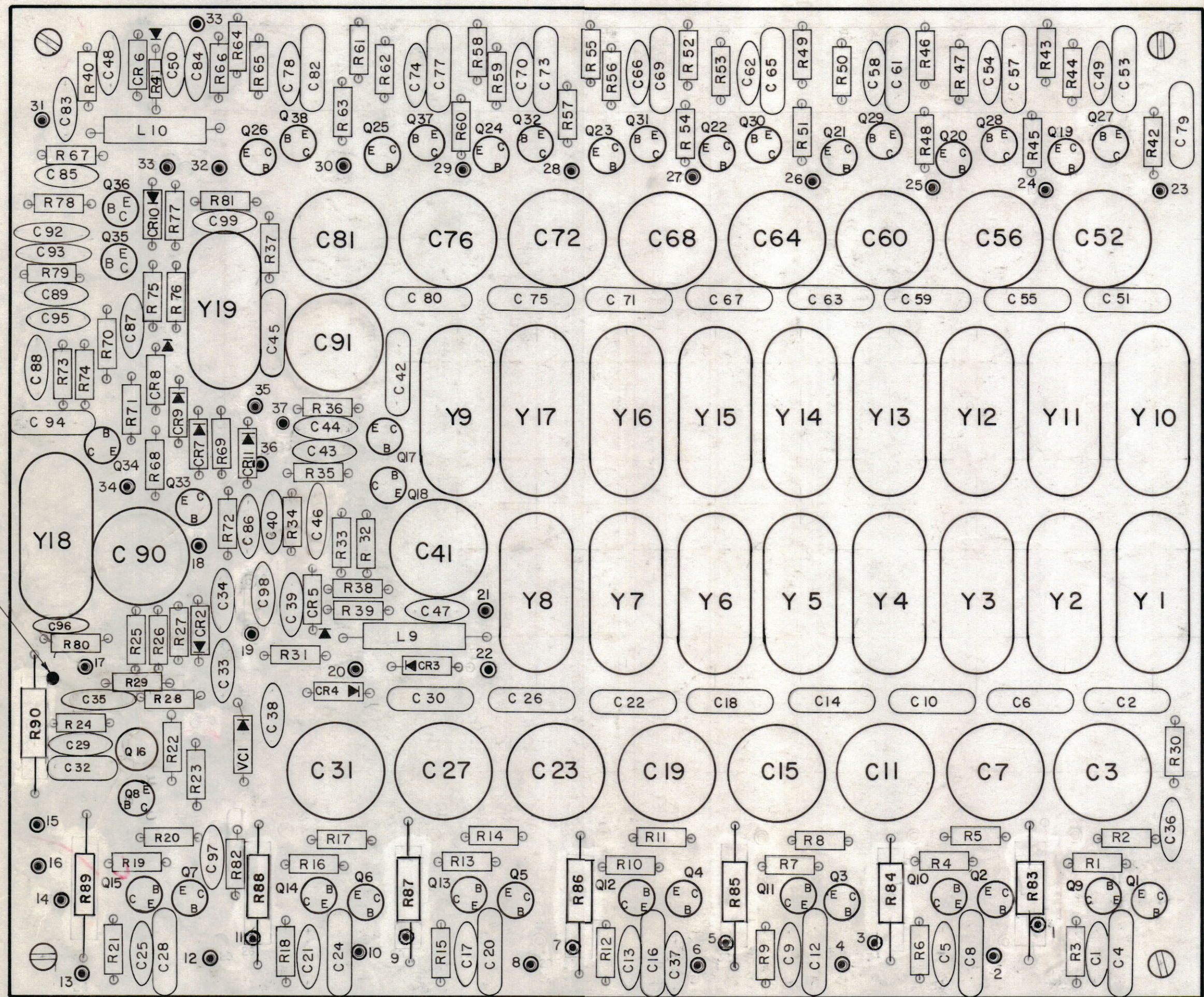
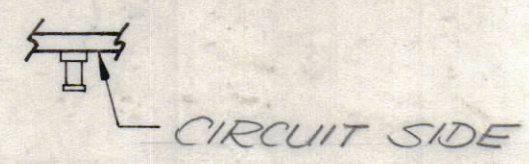


REVISIONS						
ZONE	LTR	DESCRIPTION	DATE	E.M.N.NO	DRAFT	CHKD APPD
	X1	COMPLETELY REDRAWN & REV	5/25/72		GE	
	X2	VCI WAS CRI	1/16/73		GE	
	Ø	ORIGINAL RELEASE FOR PRODUCTION	1/29/73		CL	
B-43-2	A	R83-R90 WAS L1-L8	9-21-74	21167	GDL	Ch 008



ASSEMBLY NOTES

1. TO MOUNT COMPONENTS, INSERT LEADS THROUGH HOLES.
2. CAUTION, WHEN APPLYING HEAT AND SOLDER TO LEAD AND FOIL.
3. CLEAN AND INSPECT AS PER SPEC S676.
4. FOR ELECTRICAL COMPONENT PART NUMBERS REFER TO NPL A4733
5. USE SYMBOL NUMBERS FOR ASSEMBLY REF.



TM 125D		
QTY / UNIT	MODEL USED ON	ASS'Y NO.
APPLICATION		
CODE		
<p>NOTICE TO PERSONS RECEIVING THIS DRAWING</p> <p>THE TECHNICAL MATERIEL CORPORATION claims proprietary right in the material disclosed herein. This drawing is issued in confidence for engineering information only and may not be reproduced or used to manufacture anything shown herein without permission from THE TECHNICAL MATERIEL CORPORATION to the user. This drawing is loaned for mutual assistance and is subject to recall at any time.</p>		

UNLESS OTHERWISE SPECIFIED DIMENSIONS ARE IN INCHES AND INCLUDE CHEMICALLY APPLIED OR PLATED FINISHES	
TOLERANCES ON	
DECIMALS	FRACTIONS
.X ± .05	± 1/64
.XX ± .01	ANGLES
.XXX ± .005	± 0° -30'
MATERIAL	
FINISH	

X	2	BS 100	SOLDER TIN ALLOY	
1	1	PC 467	PRINTED CIRCUIT BOARD	
QTY. REQ.	ITEM	PART NO.	DESCRIPTION	SYMBOL
O.P. LIST OF MATERIAL				
FINAL APPROVAL		DATE		
MECH. DES.		DATE		
ELECT. DES.		DATE		
CHECKED		DATE		
DRAWN		DATE		
<p>THE TECHNICAL MATERIEL CORP.</p> <p>MAMARONECK, NEW YORK</p> <p>ASSY. PRINTED CIRCUIT BOARD</p> <p>CRYSTAL OSCILLATOR</p>				A
SIZE	CODE IDENT.NO.	DWG NO.	ISSUE	
C	82679	A4723	A	
SCALE 2:1			SHEET	OF