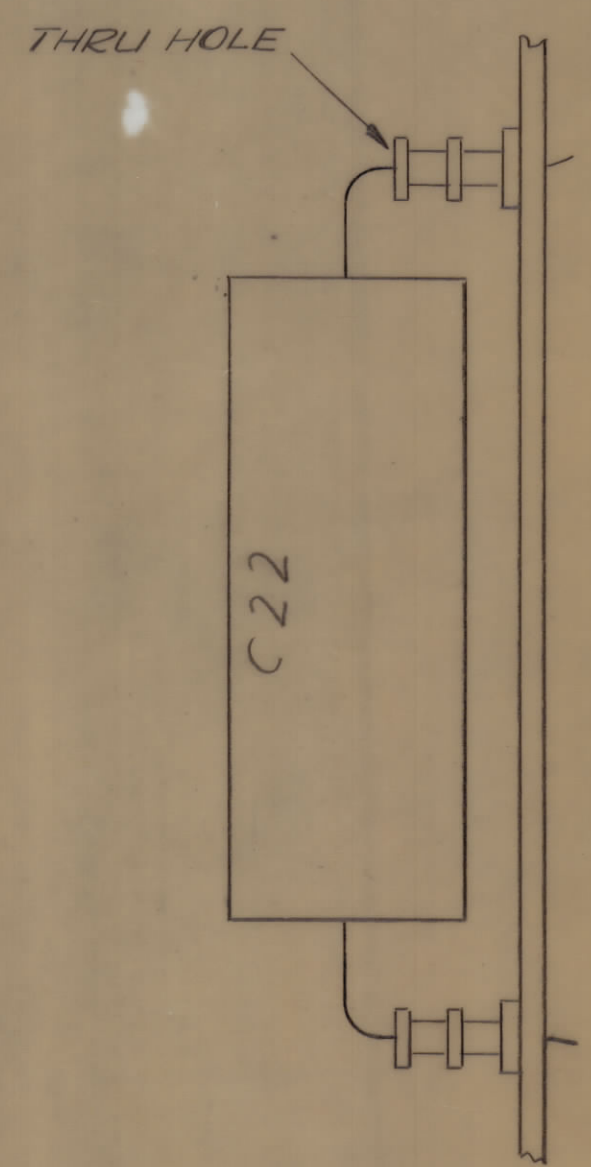
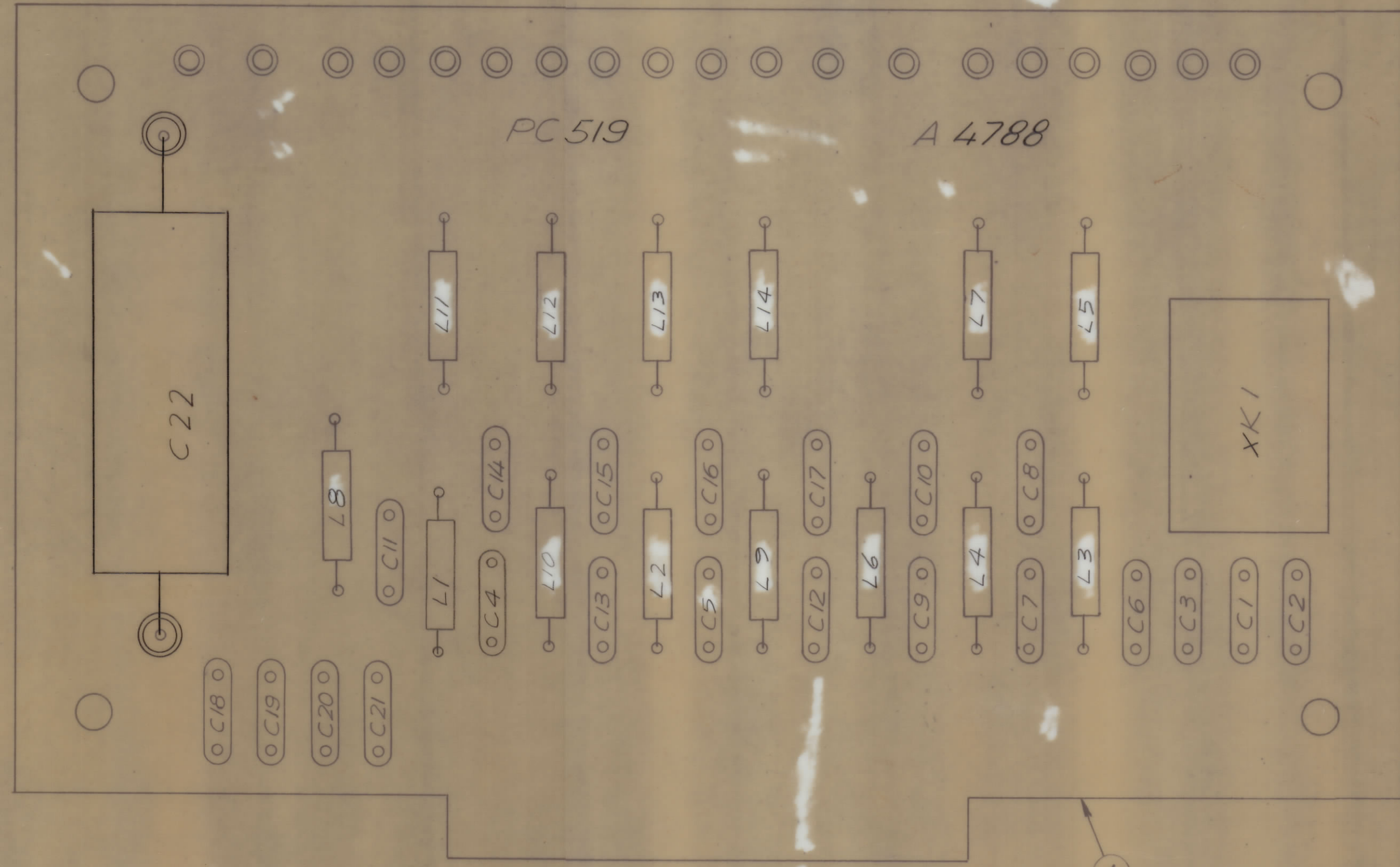


REVISIONS							
E.M.N.NO	DRAFT	CHKD	ZONE	LTR	DESCRIPTION	DATE	APPROVED
	GH			X	EXP. RELEASE	2/18/70	
	GE			Ø	ORIGINAL RELEASE FOR PRODUCTION	2/25/70	



ASSEMBLY NOTES

1. TO MOUNT COMPONENTS, INSERT LEAD THROUGH PLATED THRU HOLES.
2. CAUTION WHEN APPLYING HEAT AND SOLDER TO LEAD AND FOIL.
3. CLEAN AND INSPECT AS PER TMC SPEC. S 676.
4. FOR ELECTRICAL COMPONENT PART NUMBERS REFER TO NPL A 4788.
5. USE SYMBOL NUMBERS FOR ASSEMBLY REFERENCE.

SPARE PARTS USE ONLY

1	PALA - 10K	AX5084
QTY / UNIT	MODEL USED ON	ASS'Y NO.
APPLICATION		
	CODE	

NOTICE TO PERSONS RECEIVING THIS DRAWING  
 THE TECHNICAL MATERIEL CORPORATION claims proprietary right in the material disclosed hereon. This drawing is issued in confidence for engineering information only and may not be reproduced or used to manufacture anything shown hereon without permission from THE TECHNICAL MATERIEL CORPORATION to the user. This drawing is loaned for mutual assistance and is subject to recall at any time.

UNLESS OTHERWISE SPECIFIED DIMENSIONS ARE IN INCHES AND INCLUDE CHEMICALLY APPLIED OR PLATED FINISHES

TOLERANCES ON

DECIMALS	FRACTIONS
.X ± .05	± 1/64
.XX ± .01	ANGLES
.XXX ± .005	± 0° -30'

MATERIAL

FINISH

QTY. REQ.	ITEM	PART NO.	DESCRIPTION	SYMBOL
X	2	BS 100	SOLDER, TIN ALLOY	
1	1	PC 519	PRINTED CIRCUIT BOARD	

LIST OF MATERIAL

FINAL APPROVAL: R. T. Tetter F.R. DATE: 2-24-70  
 MECH. DES.: R. T. Tetter DATE: 2-23-70  
 ELECT. DES.: R. T. Tetter DATE: 2-23-70  
 CHECKED: M. P. ... DATE:  
 DRAWN: J. ... DATE: 2/18/70

THE TECHNICAL MATERIEL CORP.  
 MAMARONECK, NEW YORK

ASS'Y PRINTED CIRCUIT BD

SIZE	CODE IDENT NO.	DWG NO.	ISSUE
C	82679	A 4788	Ø

SCALE 2:1 SHEET OF