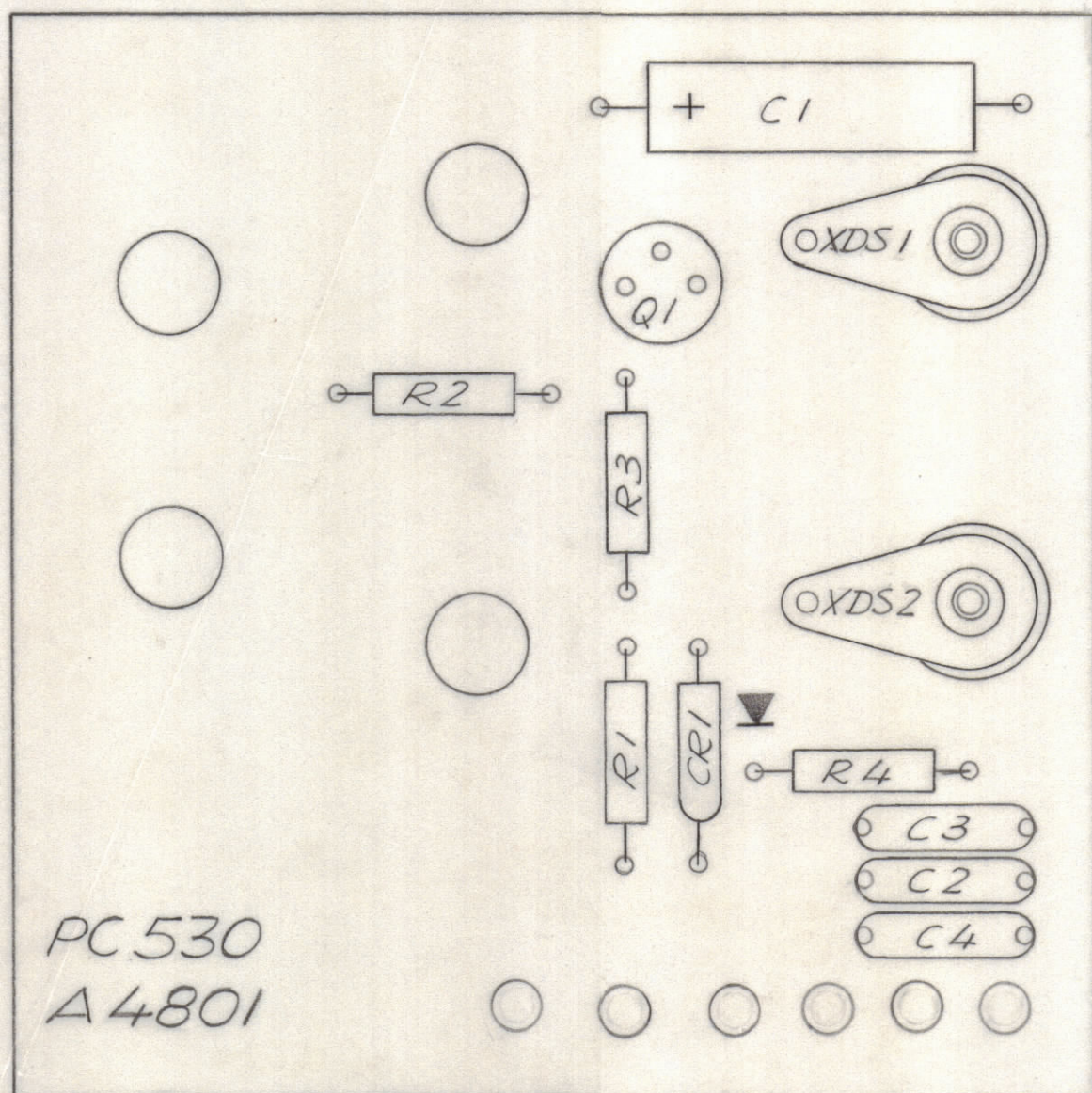
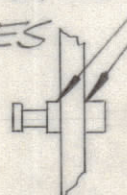


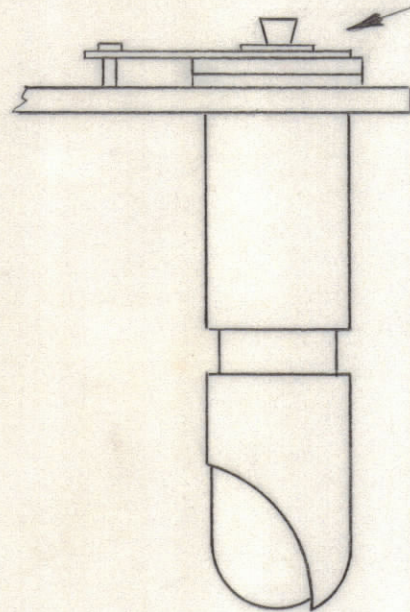
					REVISIONS		
E.M.N.NO	DRAFT	CHKD	ZONE	LTR	DESCRIPTION	DATE	APPROVED
	<i>KL</i>			X	EXP. RELEASE	2/23/70	<i>MD</i>
	<i>GE</i>			Ø	ORIGINAL RELEASE FOR PRODUCTION	2/23/70	<i>MD</i>
19858	<i>GE</i>			A	ADDED TERMINAL MTG. DETAIL	5/29/70	<i>MD</i>



SOLDER TERMINALS TO PADS BOTH SIDES OF BOARD TYR 8 PLACES



SOLDER AFTER MOUNTING



MOUNTING FOR DS1 & DS2

ASSEMBLY NOTES

1. TO MOUNT COMPONENTS, INSERT LEAD THROUGH PLATED THRU HOLES.
2. CAUTION WHEN APPLYING HEAT AND SOLDER TO LEAD AND FOIL.
3. CLEAN AND INSPECT AS PER TMC SPEC. S 676.
4. FOR ELECTRICAL COMPONENT PART NUMBERS REFER TO NPL A 4801.
5. USE SYMBOL NUMBERS FOR ASSEMBLY REFERENCE.

QTY. REQ.	ITEM	PART NO.	DESCRIPTION	SYMBOL
x 3		BS 100	SOLDER, TIN ALLOY	
1	2	PX 829 -3	PAD, MOUNTING, TRANSISTOR	
1	1	PC 530	PRINTED CIRCUIT BOARD	

LIST OF MATERIAL

QTY / UNIT	PALA - 10K	AX 5080
	MODEL USED ON	ASS'Y NO.
APPLICATION		
	CODE	

NOTICE TO PERSONS RECEIVING THIS DRAWING
 THE TECHNICAL MATERIEL CORPORATION claims proprietary right in the material disclosed hereon. This drawing is issued in confidence for engineering information only and may not be reproduced or used to manufacture anything shown hereon without permission from THE TECHNICAL MATERIEL CORPORATION to the user. This drawing is loaned for mutual assistance and is subject to recall at any time.

UNLESS OTHERWISE SPECIFIED DIMENSIONS ARE IN INCHES AND INCLUDE CHEMICALLY APPLIED OR PLATED FINISHES		FINAL APPROVAL <i>F.B.</i>	DATE 2-24-70
TOLERANCES ON		MECH. DES. <i>[Signature]</i>	DATE 2-25-70
DECIMALS	FRACTIONS	ELECT. DES. <i>[Signature]</i>	DATE 2-23-70
.X ± .05	± 1/64	CHECKED <i>[Signature]</i>	DATE 2/23/70
.XX ± .01	ANGLES	DRAWN <i>[Signature]</i>	
.XXX ± .005	± 0° -30'		

MATERIAL	
FINISH	

THE TECHNICAL MATERIEL CORP. MAMARONECK, NEW YORK			
ASS'Y PRINTED CIRCUIT BD DRIVER OVL D			
SIZE	CODE IDENT NO.	DWG NO.	ISSUE
C	82679	A 4801	A
SCALE 2:1	SHEET		OF

A 4801

A

B

A