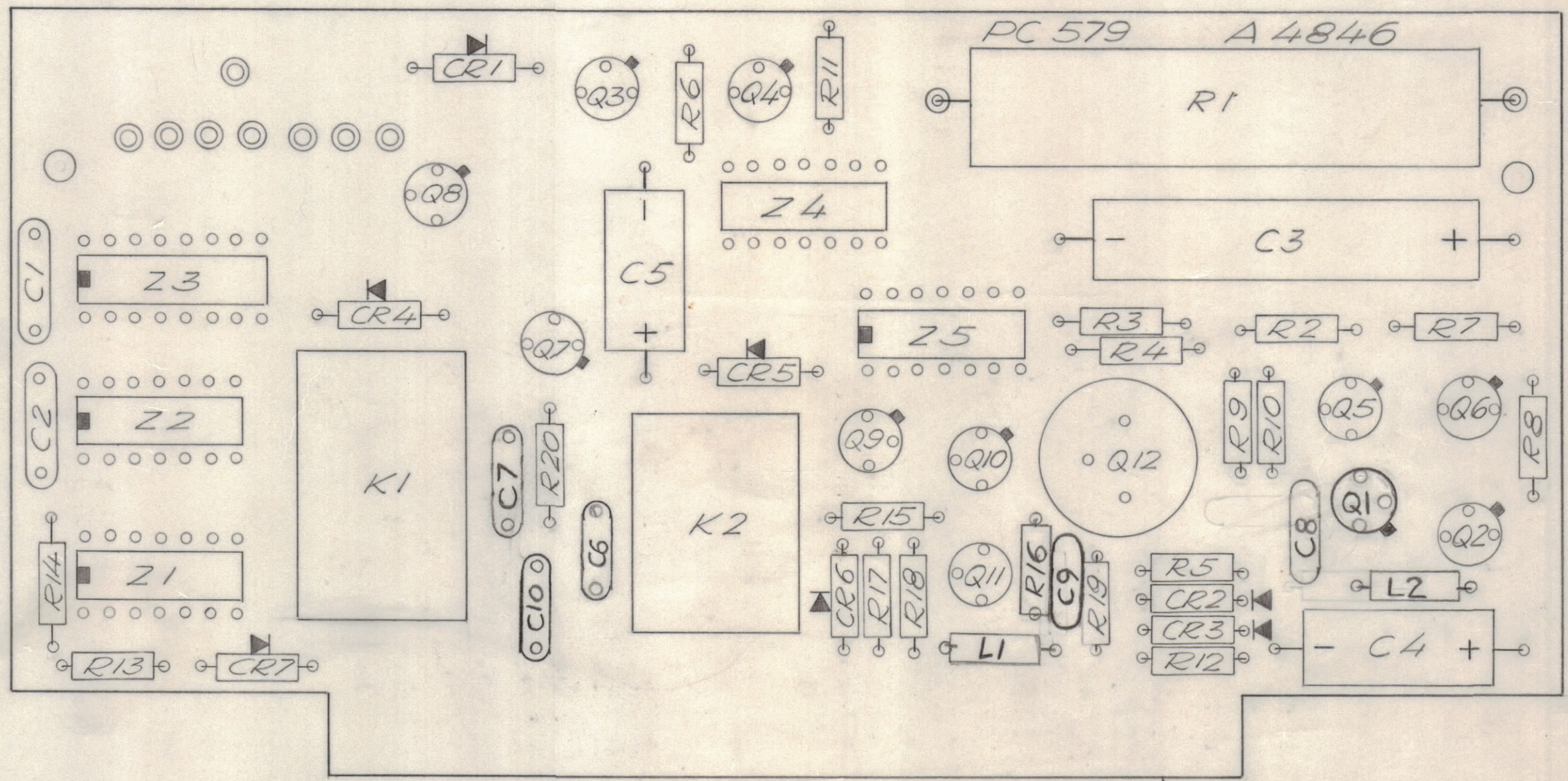
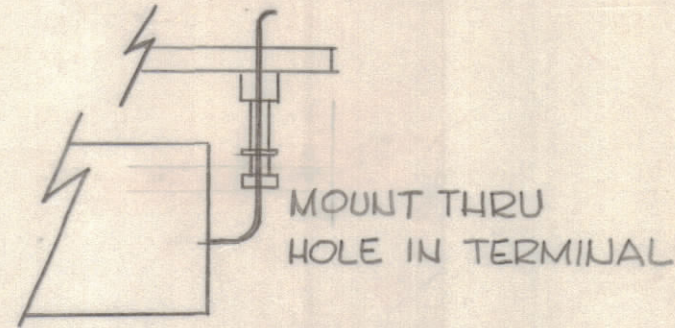


REVISIONS							
E.M.N.NO	DRAFT	CHKD	ZONE	LTR	DESCRIPTION	DATE	APPROVED
	ELH			X	EXP. RELEASE	9/17/70	
	(1)			X	ORIGINAL RELEASE FOR PRODUCTION	10/10/70	
21061				A	C6 THRU C10, L1, L2 Added	6-4-75	Ch.



ASSEMBLY NOTES

1. TO MOUNT COMPONENTS; INSERT LEAD THROUGH PLATED THRU HOLES.
2. CAUTION WHEN APPLYING HEAT AND SOLDER TO LEAD AND FOIL
3. CLEAN AND INSPECT AS PER TMC SPEC S 676
4. FOR ELECTRICAL COMPONENT PART NUMBERS REFER TO NPL A 4846
5. USE SYMBOL NUMBERS FOR ASSEMBLY REFERENCE.

QTY. REQ.	ITEM	PART NO.	DESCRIPTION	SYMBOL
X	2	BS 100	SOLDER, TIN ALLOY	
1	1	PC 579	PRINTED CIRCUIT BOARD	

S. DE MARCO		LIST OF MATERIAL	
FINAL APPROVAL	DATE	THE TECHNICAL MATERIEL CORP. MAMARONECK, NEW YORK <i>ASS'Y PRINTED CIRCUIT BD</i> <i>TRANSMITTER AUTOM. RESET</i>	
MECH. DES.	DATE		
ELECT. DES.	DATE		
CHECKED	DATE		
DRAWN	DATE		

QTY / UNIT	MODEL USED ON	ASS'Y NO.
1	HET(-) - () K	
APPLICATION		
	CODE	

NOTICE TO PERSONS RECEIVING THIS DRAWING
 THE TECHNICAL MATERIEL CORPORATION claims proprietary right in the material disclosed herein. This drawing is issued in confidence for engineering information only and may not be reproduced or used to manufacture anything shown herein without permission from THE TECHNICAL MATERIEL CORPORATION to the user. This drawing is loaned for mutual assistance and is subject to recall at any time.

TOLERANCES ON	
DECIMALS	FRACTIONS
.X ± .05	± 1/64
.XX ± .01	ANGLES
.XXX ± .005	± 0° -30'
MATERIAL	
FINISH	

SIZE	CODE IDENT NO.	DWG NO.	ISSUE
C	82679	44846	A

SCALE 2:1 SHEET OF