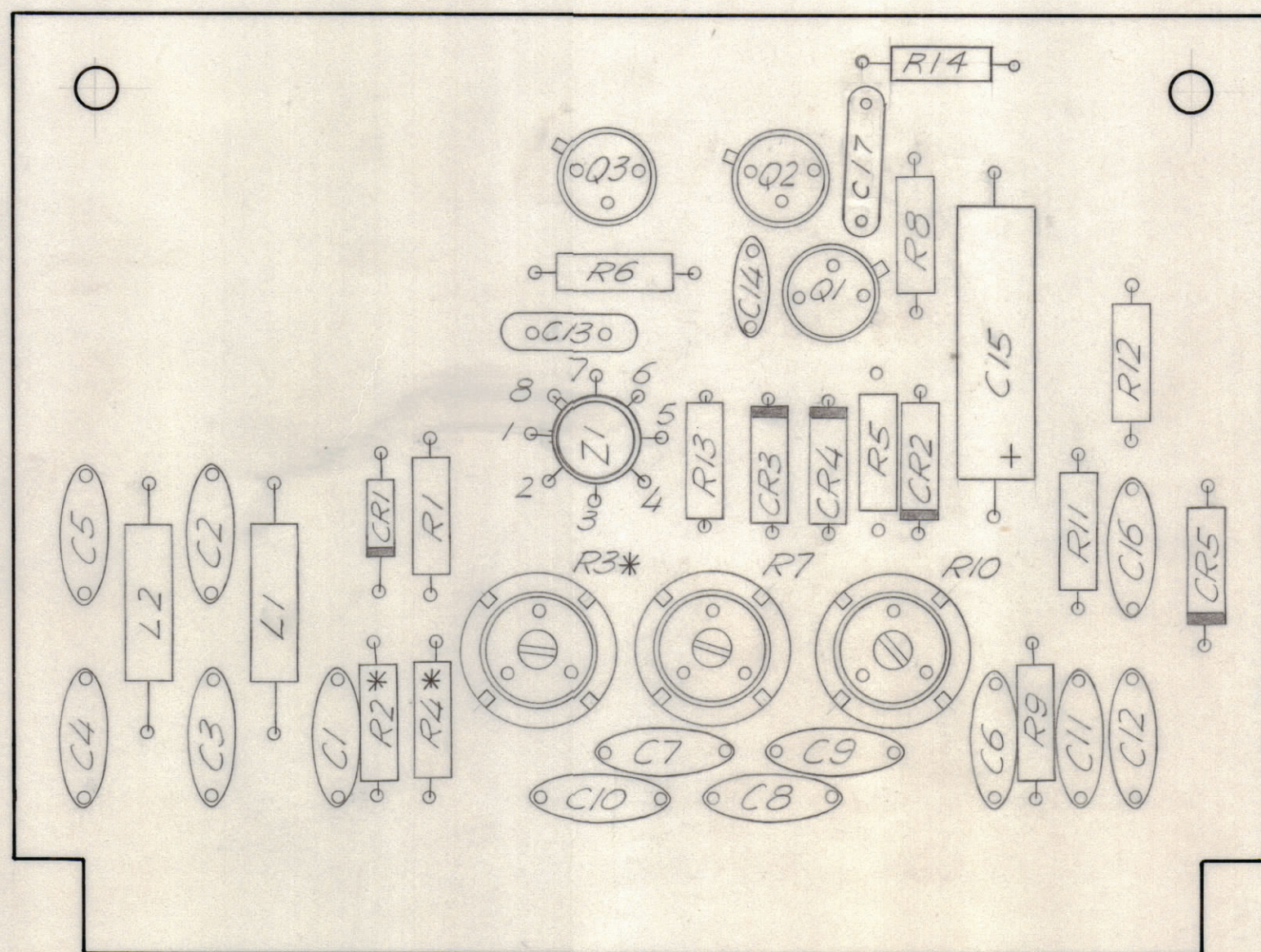
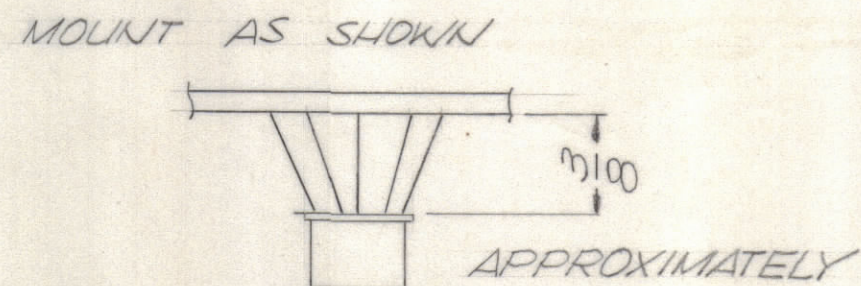


REVISIONS							
E.M.N.NO	DRAFT	CHKD	ZONE	LTR	DESCRIPTION	DATE	APPROVED
	GE			X	EXP RELEASE	10/2/71	P.E.S.
	Q			Ø	ORIGINAL RELEASE FOR PRODUCTION	2/9/71	P.E.S.
20264	RZ	Q		A	CHG. DOT ON Z1, ADD. DIODE POLARITY & DOTS TO Q1, 2 & 3, CHG. TO CR1845 REV. CIRCUIT	6-7-71	P.E.S.
20675	GE	Q		B	ADD. NOTE 6 TO ASSY. NOTES	5-8-72	EJ



ASSEMBLY NOTES

1. TO MOUNT COMPONENTS, INSERT LEADS THROUGH PLATED THRU-HOLES.
2. CAUTION, WHEN APPLYING HEAT AND SOLDER TO LEAD AND FOIL.
3. CLEAN AND INSPECT AS PER SPEC 5676.
4. FOR ELECTRICAL COMPONENT PART NUMBERS REFER TO NPL A 4851
5. USE SYMBOL NUMBERS FOR ASSEMBLY REFERENCE.
6. R2, R3, R4 ARE DELETED WHEN THE TLAM-1K IS USED WITH THE AP151 & AP152.

QTY. REQ.	ITEM	PART NO.	DESCRIPTION	SYMBOL
X	2	BS 100	SOLDER TIN ALLOY	
1	1	PC 581	PRINTED CIRCUIT BOARD	

F. BUDETTI LIST OF MATERIAL

FINAL APPROVAL <i>F. B.</i>	DATE 2-10-71	THE TECHNICAL MATERIEL CORP. MAMARONECK, NEW YORK ASSY. PRINTED CIRCUIT BD. OVERLOAD
MECH. DES. <i>R. U880</i>	DATE 2-10-71	
ELECT. DES.	DATE	
CHECKED <i>P.E.S.</i>	DATE 2-10-71	
DRAWN <i>EVANGELIST</i>	DATE 2/10/71	

MATERIAL	SIZE	CODE IDENT NO.	DWG NO.	ISSUE
FINISH	C	82679	A 4851	B

SCALE: SHEET 1 OF 1

1	TLAM 1K	BMA446
QTY / UNIT	MODEL USED ON	ASS'Y NO.
APPLICATION		
	CODE	
NOTICE TO PERSONS RECEIVING THIS DRAWING THE TECHNICAL MATERIEL CORPORATION claims proprietary right in the material disclosed hereon. This drawing is issued in confidence for engineering information only and may not be reproduced or used to manufacture anything shown hereon without permission from THE TECHNICAL MATERIEL CORPORATION to the user. This drawing is loaned for mutual assistance and is subject to recall at any time.		