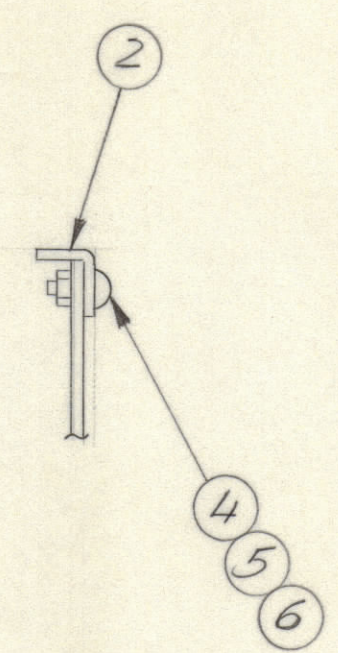
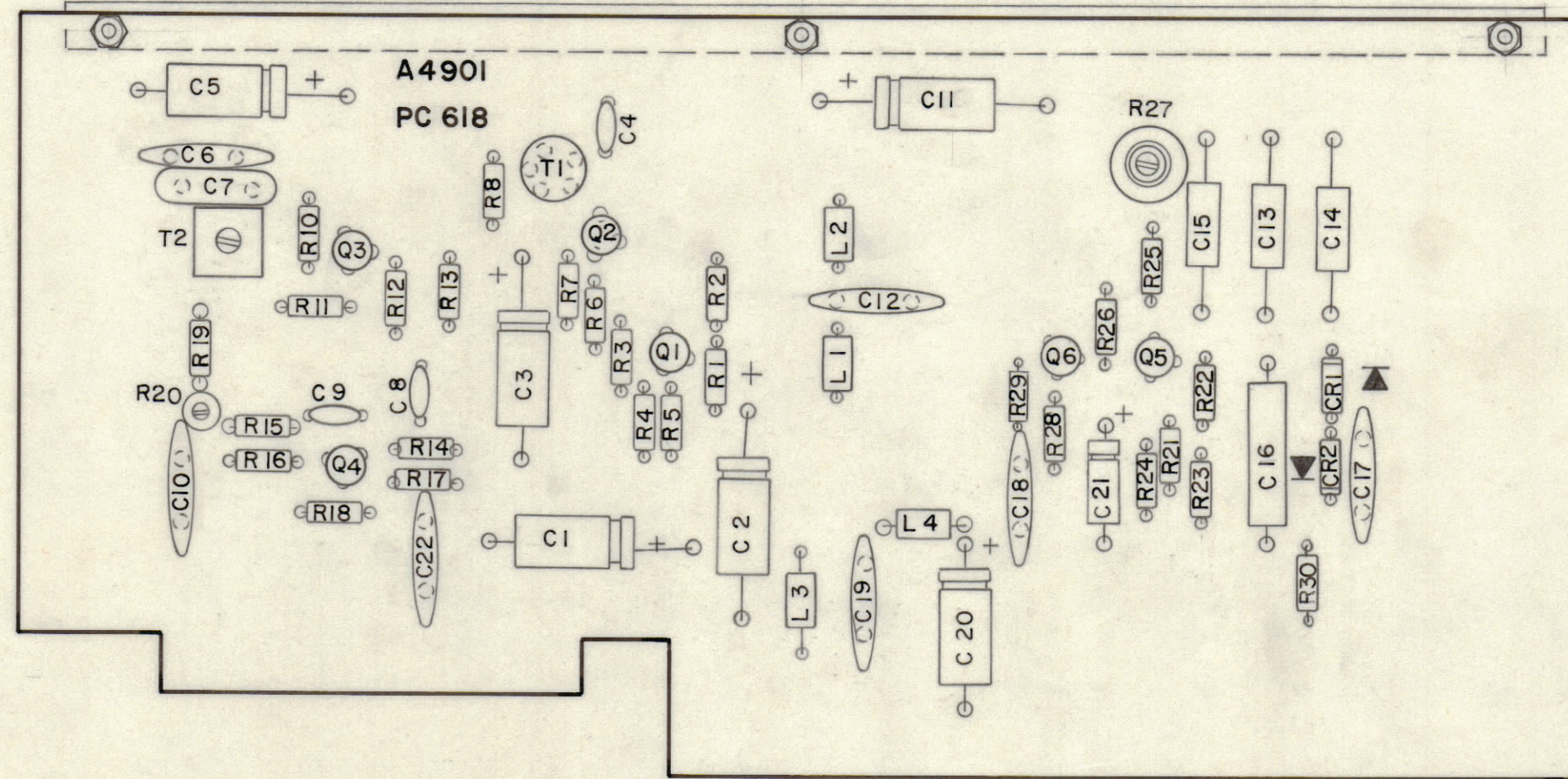


REVISIONS							
E.M.N.NO	DRAFT	CHKD	ZONE	LTR	DESCRIPTION	DATE	APPROVED
	W			Ø	ORIGINAL RELEASE FOR PRODUCTION	11/5/72	



ASSEMBLY NOTES

1. TO MOUNT COMPONENTS, INSERT LEADS THROUGH PLATED THRU-HOLES.
2. CAUTION, WHEN APPLYING HEAT & SOLDER TO LEAD AND FOIL.
3. CLEAN AND INSPECT AS PER SPEC 5676.
4. FOR ELECTRICAL COMPONENT PART NOS. REFER TO NPL A 4901.
5. USE SYMBOL NOS. FOR ASSY. REFERENCE.

QTY. REQ.	ITEM	PART NO.	DESCRIPTION	SYMBOL
3	6	NTH0440	NUT, HEX	
3	5	LWS 04MRN	WASHER, SPLIT	
3	4	SCOBPO440BNS	SCREW MACHINE	
1	3	PC 618	PRINTED CIRCUIT BOARD	
1	2	MS 6004	STIFFNER	
X	1	BS 100	SOLDER TIN ALLOY	

QTY. REQ.	ITEM	PART NO.	DESCRIPTION	SYMBOL
O.P. LIST OF MATERIAL				
FINAL APPROVAL		DATE		
MECH. DES.		DATE		
ELECT. DES.		DATE		
CHECKED		DATE		
DRAWN		DATE		
MATERIAL		FINISH		
SIZE	CODE	IDENT NO.	DWG NO.	ISSUE
C	82679		A 4901	Ø
SCALE NTS				SHEET OF

MFE-1		
QTY / UNIT	MODEL USED ON	ASS'Y NO.
APPLICATION		
CODE		

NOTICE TO PERSONS RECEIVING THIS DRAWING
 THE TECHNICAL MATERIEL CORPORATION claims proprietary right in the material disclosed hereon. This drawing is issued in confidence for engineering information only and may not be reproduced or used to manufacture anything shown hereon without permission from THE TECHNICAL MATERIEL CORPORATION to the user. This drawing is loaned for mutual assistance and is subject to recall at any time.

TOLERANCES ON	
DECIMALS	FRACTIONS
.X ± .05	± 1/64
.XX ± .01	ANGLES
.XXX ± .005	± 0° -30'

THE TECHNICAL MATERIEL CORP.
 MAMARONECK, NEW YORK

ASSY. PRINTED CIRCUIT BD.