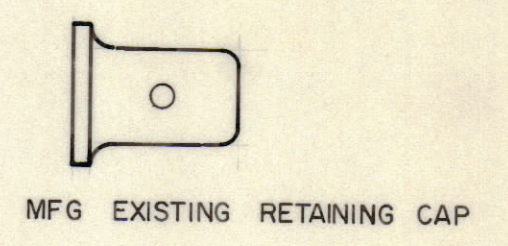
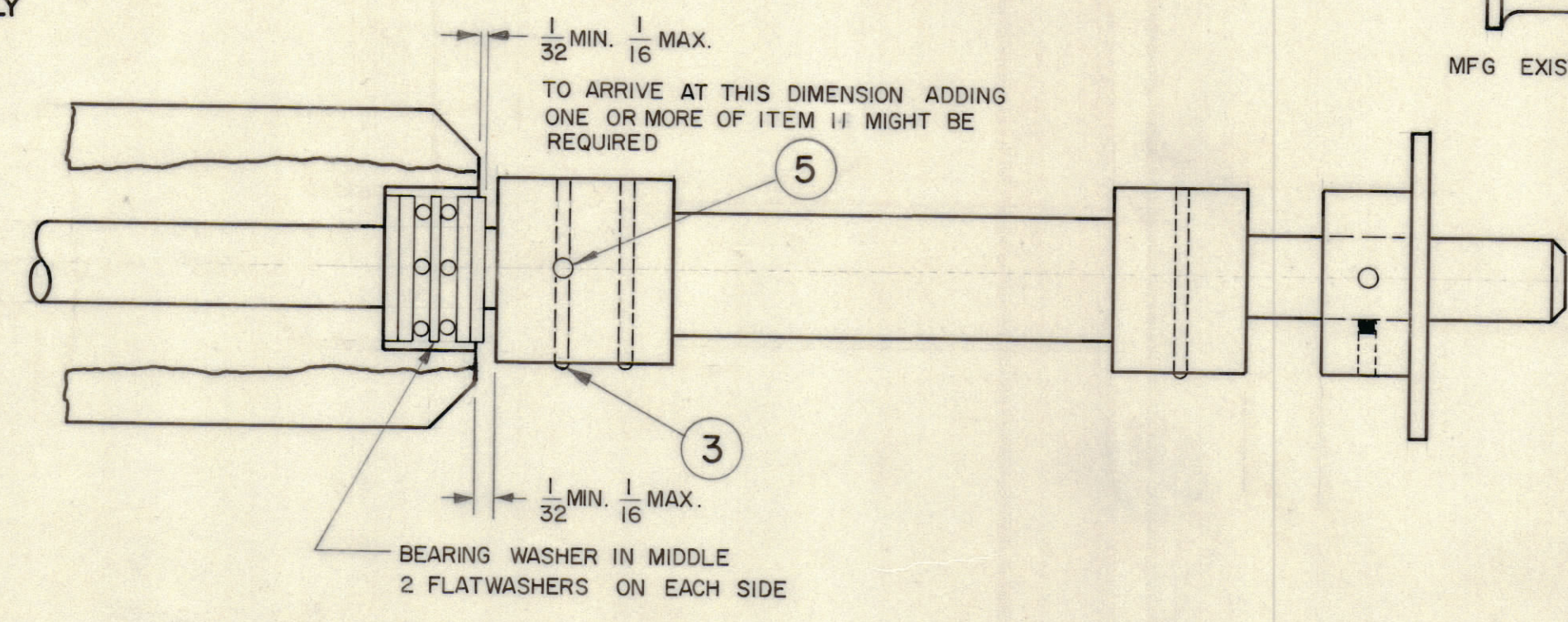
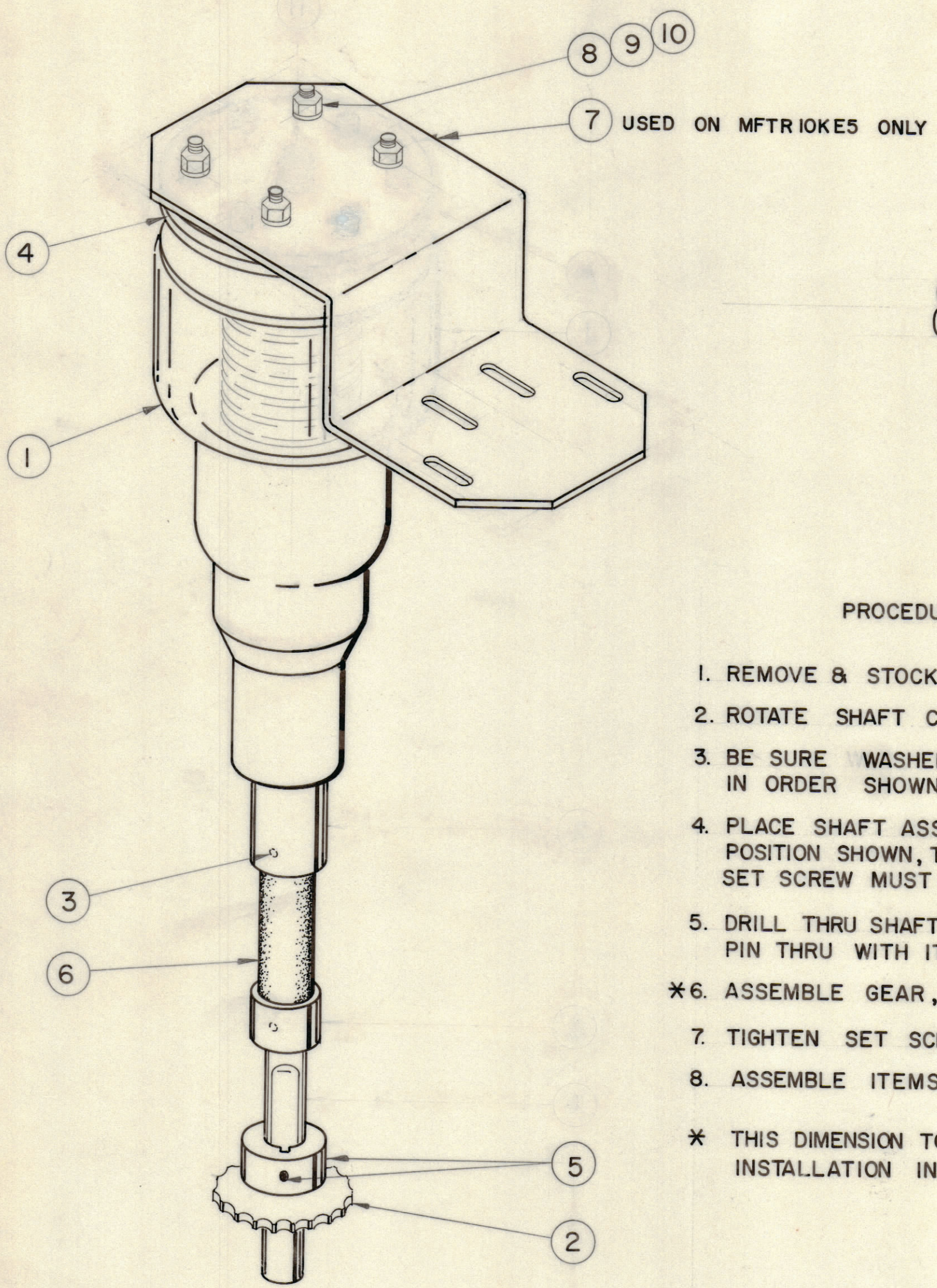


REVISIONS					DATE	APPROVED
E.M.N.NO	DRAFT	CHKD	ZONE	LTR	DESCRIPTION	
	W			Ø	ORIGINAL RELEASE FOR PRODUCTION	3/6/72



PROCEDURE

1. REMOVE & STOCK RETAINING CAP.
  2. ROTATE SHAFT CCW TO LIMIT.
  3. BE SURE WASHERS ARE PLACED ON SHAFT IN ORDER SHOWN.
  4. PLACE SHAFT ASSY. IT.6, ON CAPACITOR SHAFT IN POSITION SHOWN, TIGHTEN SET SCREW, IT. 5, (NOTE: SET SCREW MUST BE ON FLAT OF CAPACITOR SHAFT.
  5. DRILL THRU SHAFT ASSY. PILOT HOLE WITH NO. 52 DRILL, PIN THRU WITH IT. 3.
  - \*6. ASSEMBLE GEAR, IT.2 IN POSITION SHOWN.
  7. TIGHTEN SET SCREWS, IT.5 ON GEAR.
  8. ASSEMBLE ITEMS 4,7,8,9,10,11.
- \* THIS DIMENSION TO BE ESTABLISHED ON ASSY. & INSTALLATION INTO UNIT.

QTY. REQ.	ITEM	PART NO.	DESCRIPTION	SYMBOL
1	11	WA135-5	WASHER THRUST (IF REQ)	
4	10	NTH0832BN 10	NUT HEX	
4	9	LWE 08 MRN	LOCK WASHER EXT.	
4	8	SCBPO832BN6	SCREW MACHINE	
1	7	MS-6274	CONNECTOR ELEC (SEE NOTE)	
1	6	PM 524	SHAFT, ASSY	
3	5	SLHC0832SP4	SET SCREW	
1	4	PO-185-6S	FLANGE, VAC. CAP. (FIXED)	
1	3	PN59-062-16	PIN SPRING	
1	2	GR 148-1	SPROCKET	
1	1	CB-155	CAPACITOR, VAR. VAC. 50-2000	

	MFTRIOKE5	BMA 484
	MAT5/MFTR-10K	BMA 474
QTY / UNIT	MODEL USED ON	ASS'Y NO.
APPLICATION		
	CODE	

NOTICE TO PERSONS RECEIVING THIS DRAWING  
THE TECHNICAL MATERIEL CORPORATION claims proprietary right in the material disclosed herein. This drawing is issued in confidence for engineering information only and may not be reproduced or used to manufacture anything shown hereon without permission from THE TECHNICAL MATERIEL CORPORATION to the user. This drawing is loaned for mutual assistance and is subject to recall at any time.

UNLESS OTHERWISE SPECIFIED DIMENSIONS ARE IN INCHES AND INCLUDE CHEMICALLY APPLIED OR PLATED FINISHES		FINAL APPROVAL		DATE
TOLERANCES ON		MECH. DES.		DATE
DECIMALS	FRACTIONS	ELECT. DES.		DATE
.X ± .05	± 1/64	CHECKED		DATE
.XX ± .01	ANGLES	DRAWN		DATE
.XXX ± .005	± 0° -30'	G. EVANGELIST		8/24/71
MATERIAL				
FINISH				

LIST OF MATERIAL			
THE TECHNICAL MATERIEL CORP. MAMARONECK, NEW YORK			
ASSEMBLY CAPACITOR, VARIABLE, VACUUM WITH GEAR			
SIZE	CODE IDENT NO.	DWG NO.	ISSUE
C	82679	A 4904	Ø

SCALE	SHEET OF	

A4904