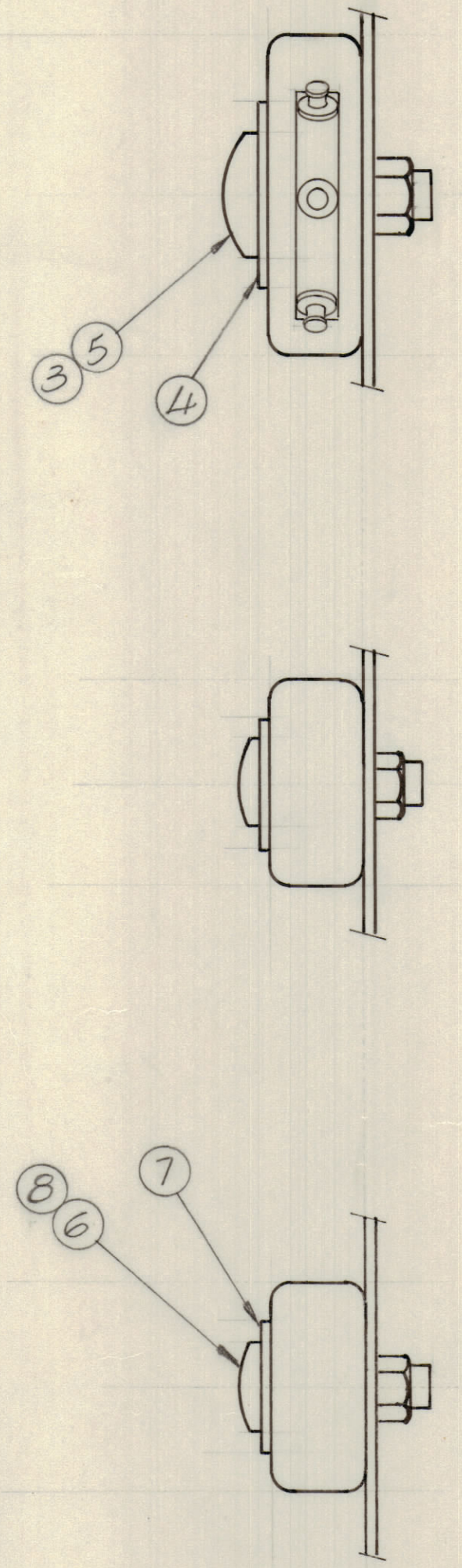
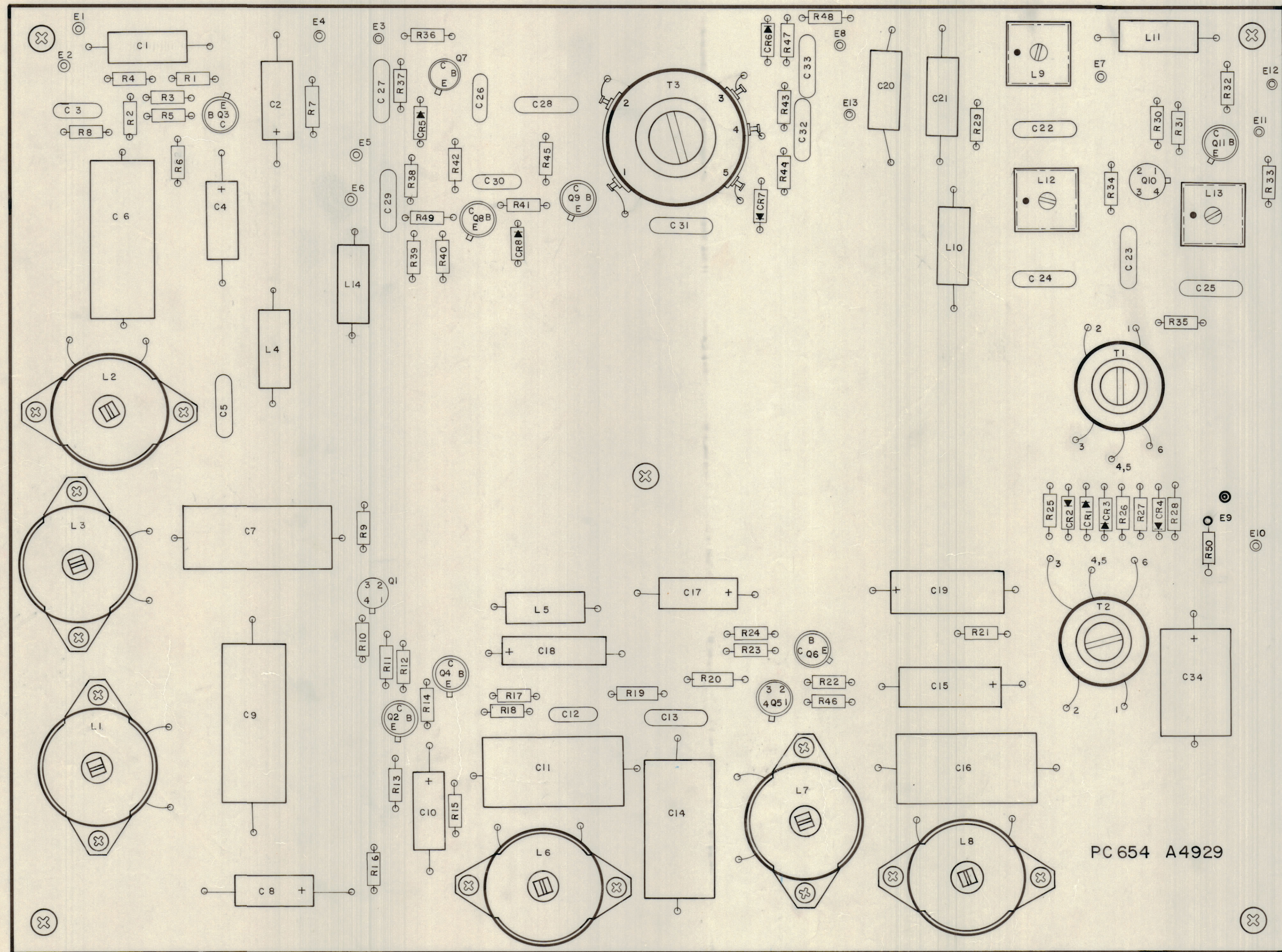


REVISIONS							
E.M.N.O	DRAFT	CHKD	ZONE	LTR	DESCRIPTION	DATE	APPROVED
					ORIGINAL RELEASE FOR PRODUCTION	11/21/72	
21013	CE	EA	A		ADD TERMS & MARKING TO T3	2/12/73	EP
21048	CE	EA	B		ADDED R50	3/28/73	EP



PC 654 A4929

ASSEMBLY NOTES

1. TO MOUNT COMPONENTS, INSERT LEADS THROUGH HOLES.
2. CAUTION, WHEN APPLYING HEAT AND SOLDER TO LEAD AND FOIL.
3. CLEAN AND INSPECT AS PER SPEC. 5676.
4. FOR ELECTRICAL COMPONENT PART NUMBERS REFER TO NPL A 4929.
5. USE SYMBOL NUMBERS FOR ASSEMBLY REFERENCE.

QTY. REQ.	ITEM	PART NO.	DESCRIPTION	SYMBOL
2	8	NT 137-832	NUT NYLON	
2	7	WA109-48	WASHER FIBER	
2	6	SC143-832-B12-W	SCREW NYLON	
1	5	NT137-1032	NUT, NYLON	
1	4	WA109-54	WASHER, FIBER	
1	3	SC143-1032-B12-W	SCREW NYLON	
X	2	BS 100	SOLDER TIN ALLOY	
1	1	PC 654	PRINTED CIRCUIT BD.	

LIST OF MATERIAL

UNLESS OTHERWISE SPECIFIED DIMENSIONS ARE IN INCHES AND INCLUDE CHEMICALLY APPLIED OR PLATED FINISHES	FINAL APPROVAL	DATE	THE TECHNICAL MATERIEL CORP. MAMARONECK, NEW YORK ASSY. PRINTED CIRCUIT BD MULT. COMPARATOR
	MECH. DES.	DATE	
	ELECT. DES.	DATE	
	CHECKED	DATE	
TOLERANCES ON DECIMALS .X ± .05 .XX ± .01 .XXX ± .005	FRACTIONS ± 1/64 ANGLES ± 0° - 30'	DRAWN	DATE
		EVANGELIST 11/16/72	
MATERIAL			SIZE CODE IDENT NO. DWG NO.
FINISH			D 82679 A 4929 B
SCALE 2:1			SHEET OF

RSU-1		
QTY / UNIT	MODEL USED ON	ASSY NO.
APPLICATION		
CODE		
<small>NOTICE TO PERSONS RECEIVING THIS DRAWING</small> <small>THE TECHNICAL MATERIEL CORPORATION claims proprietary right in the material disclosed herein. This drawing is issued in confidence for engineering information only and may not be reproduced or used to manufacture anything shown hereon without permission from THE TECHNICAL MATERIEL CORPORATION to the user. This drawing is loaned for mutual assistance and is subject to recall at any time.</small>		