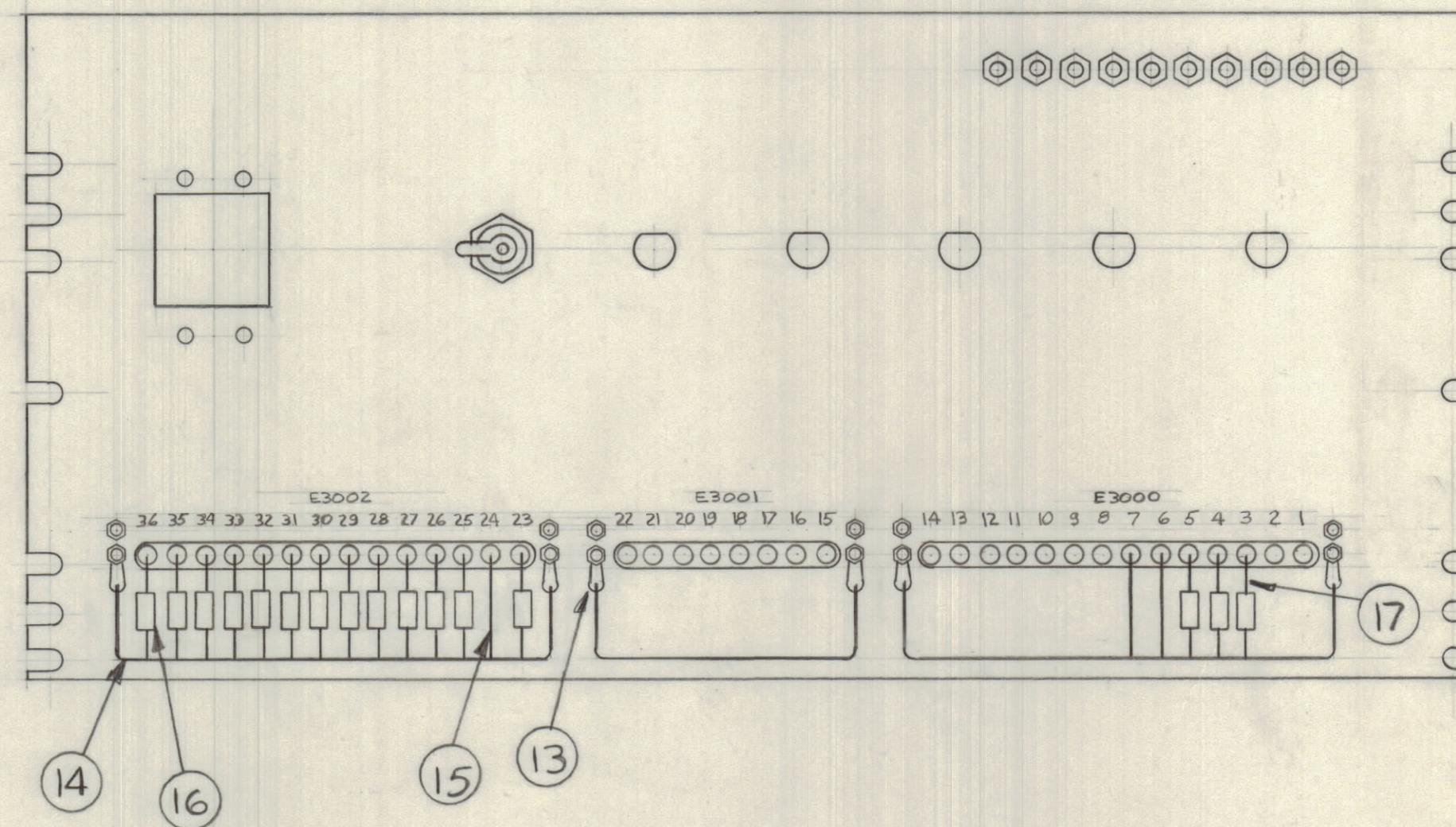
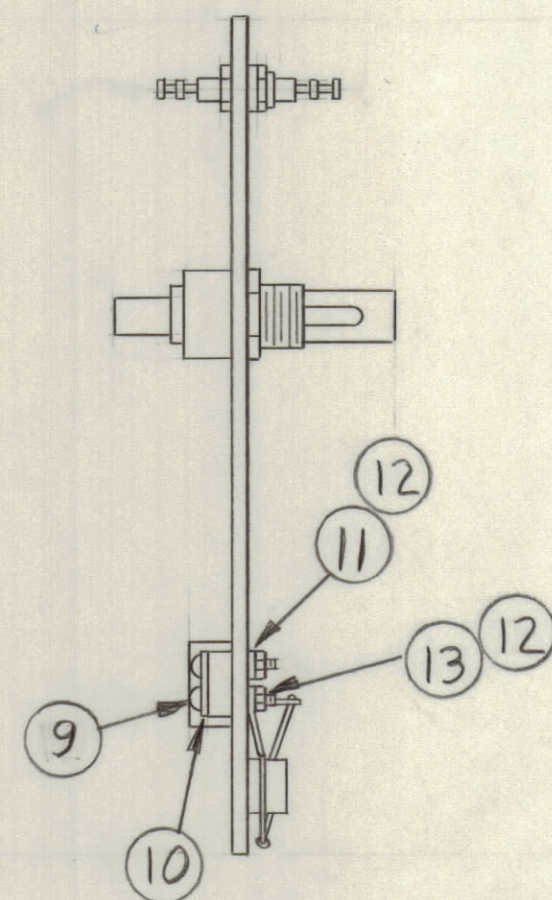
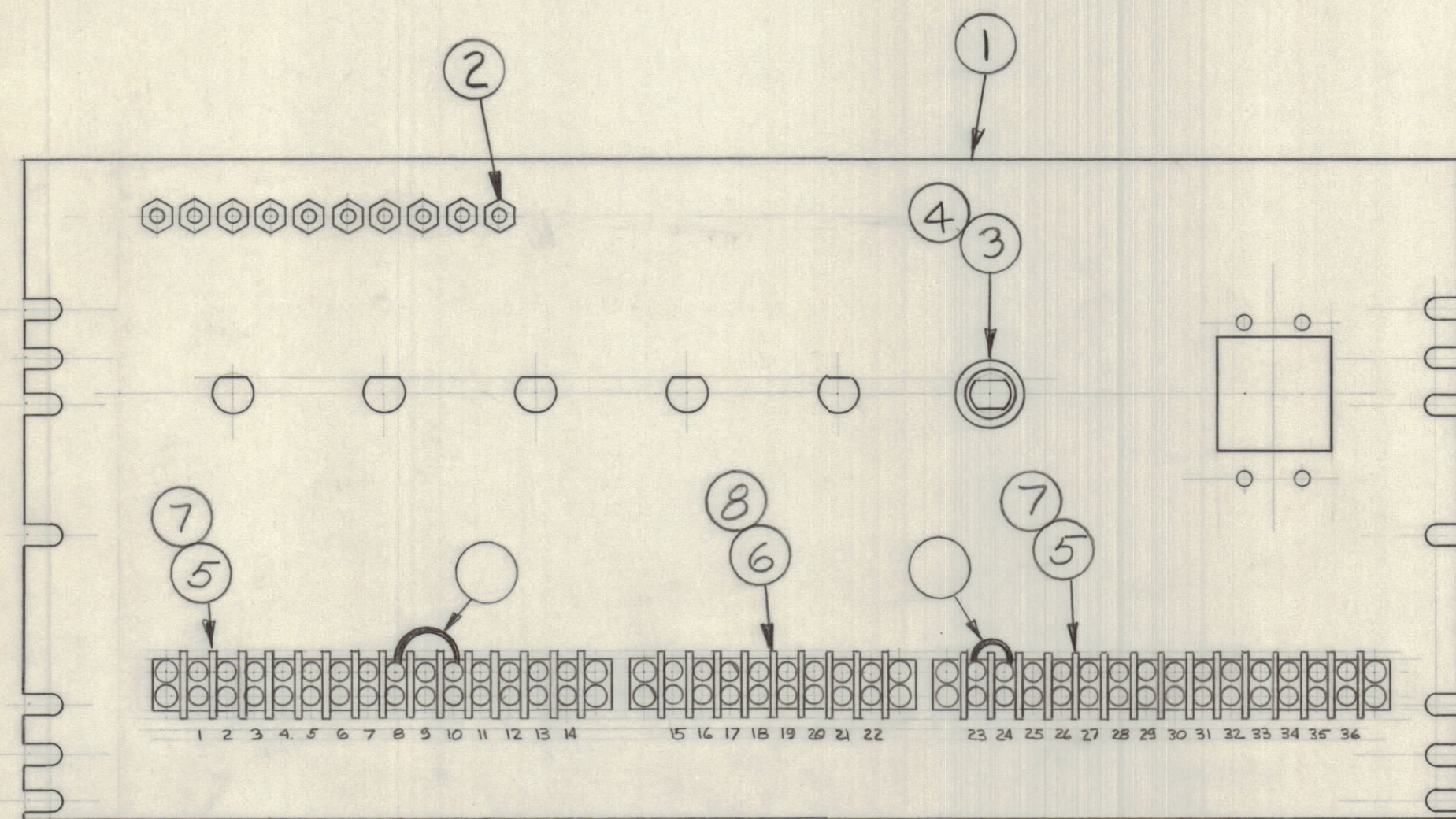


REVISIONS						
E.M.N.O	DRAFT	CHKD	ZONE	LTR	DATE	APPROVED
					11-9-72	
DESCRIPTION					DATE	APPROVED
ORIGINAL RELEASE FOR PRODUCTION						



26			
25			
24			
23			
22			
21			
20			
19	B5100	SOLDER, TIN ALLOY	
2	CA409-32-2.00	CBL ASSY, JUMPER	
17	PX104-1-034	INS, SLUG	
16	CM20F102603	CAP, FXP, MICA	
15	WL100-7	WIRE, ELEC, BUSS	
14	WL100-4	WIRE, ELEC, BUSS	
6	TE104-1	TERM, LUG	
12	NTH0440 BN8	NUT, PLN, HEX	
6	LWE04 MN	WASH, LK, EXT	
6	MS154-1	PLATE, STRADDLE	
12	SCBP0940 BN10	SCB, MACH	
1	PX337-8	INS, TERM STRIP	
2	PX337-14	INS, TERM STRIP	
1	TH100-8	TERM STRIP, BARRIER	
2	TH100-14	TERM STRIP, BARRIER	
1	FU102-.5	FUSE, CTG	
1	FH104-3	FUSE HOLDER, IND	
10	TE114-2	TERM, FEED THRU	
1	LD2529/MS4258	CENTER SHIELD	

QTY. REQ.	ITEM	PART NO.	DESCRIPTION	SYMBOL
-----------	------	----------	-------------	--------

LIST OF MATERIAL

UNLESS OTHERWISE SPECIFIED DIMENSIONS ARE IN INCHES AND INCLUDE CHEMICALLY APPLIED OR PLATED FINISHES	FINAL APPROVAL	DATE
	MECH. DES.	DATE
	ELECT. DES.	DATE
	CHECKED	DATE
	DRAWN	DATE

TOLERANCES ON	
DECIMALS	FRACTIONS
.X ± .05	± 1/64
.XX ± .01	ANGLES
.XXX ± .005	± 0° -30'

THE TECHNICAL MATERIEL CORP.  
MAMARONECK, NEW YORK

ASSEMBLY, CENTER SHIELD

QTY / UNIT	MODEL USED ON	ASSY NO.
1	KIT 333 F	
APPLICATION		
CODE		
MATERIAL		
FINISH		

NOTICE TO PERSONS RECEIVING THIS DRAWING  
THE TECHNICAL MATERIEL CORPORATION claims proprietary right in the material disclosed hereon. This drawing is issued in confidence for engineering information only and may not be reproduced or used to manufacture anything shown hereon without permission from THE TECHNICAL MATERIEL CORPORATION to the user. This drawing is loaned for mutual assistance and is subject to recall at any time.

SIZE	CODE	IDENT NO.	DWG NO.	ISSUE
D	82679		A 4930	

SCALE SHEET OF