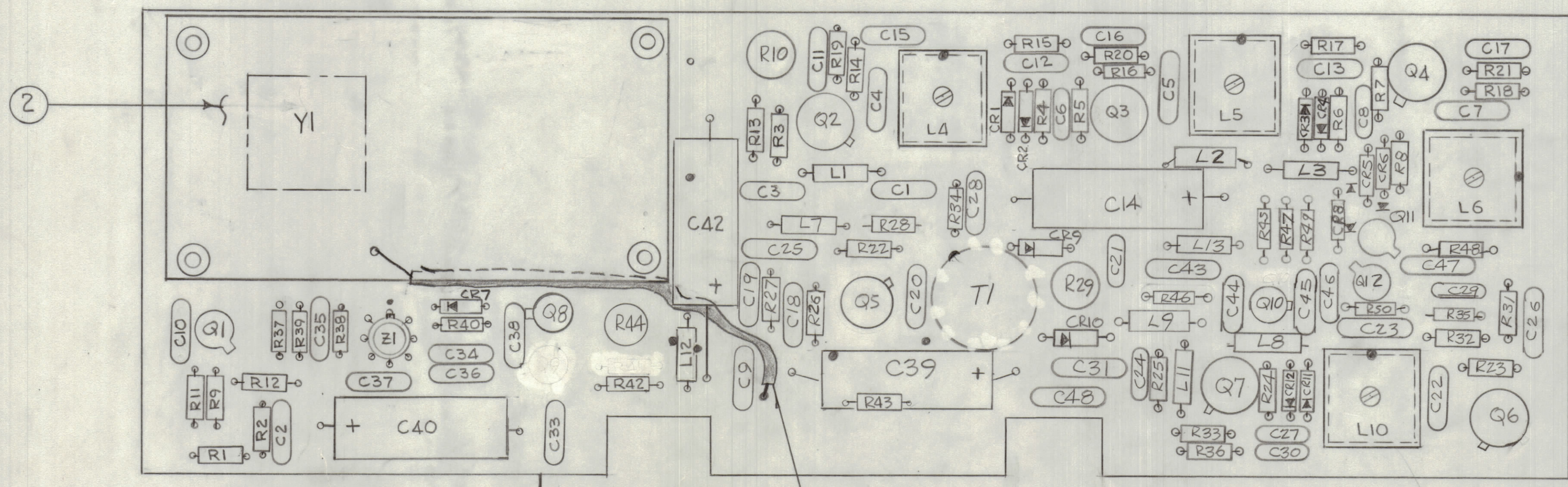
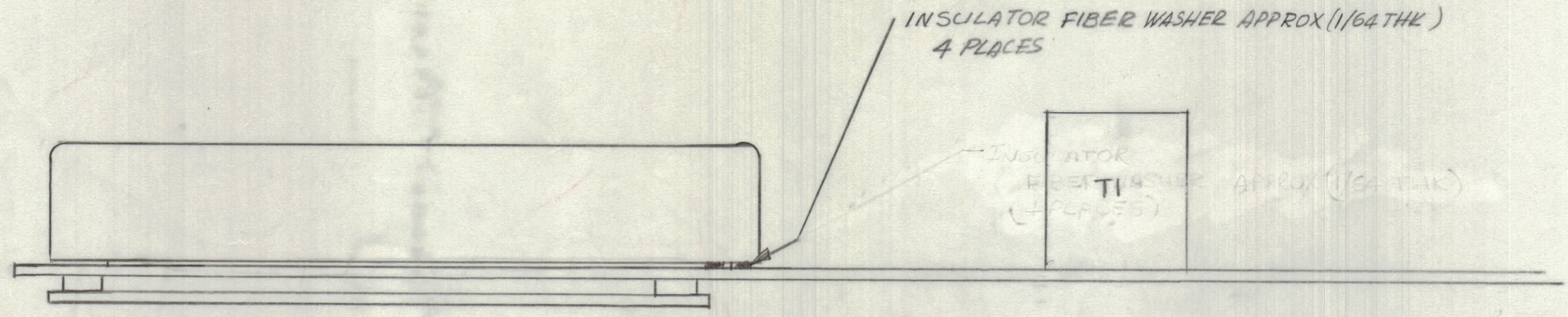


REVISIONS						
E.M.N.O	DRAFT	CHKD	ZONE	LTR	DESCRIPTION	DATE
	GDL			XI	Q4 & R41 DELETED TO SHOWN ON REAR OF BOARD	3-25-77



ASSEMBLY NOTES

1. TO MOUNT COMPONENTS INSERT LEADS THROUGH HOLES.
2. CAUTION, WHEN APPLYING HEAT & SOLDER TO LEAD & FOIL.
3. CLEAN & INSPECT AS PER SPEC S676.
4. FOR ELECTRICAL COMPONENT PART NUMBERS REFER TO NPL A4964.
5. USE SYMBOL NUMBERS FOR ASSY. REF.

QTY.	ITEM	PART NO.	DESCRIPTION	SYMBOL
		S		
X	4	BS100	SOLDER	
X	3	RG 188/U	CABLE, R.F.	
	2	PC712	PRINTED CIRCUIT BD	
	1	PC690	PRINTED CIRCUIT BD	

LIST OF MATERIAL				
FINAL APPROVAL	DATE	THE TECHNICAL MATERIEL CORP. MAMARONECK, NEW YORK ASSY, AFC		
MECH. DES.	DATE			
ELECT. DES.	DATE			
CHECKED	DATE			
DRAWN	DATE			
SIZE	CODE	IDENT NO.	DWG NO.	ISSUE
D	82679		A4964	XI
SCALE				SHEET OF

QTY / UNIT	MODEL USED ON	ASS'Y NO.
1	GPR110	BMA515
APPLICATION		
CODE		
<small>NOTICE TO PERSONS RECEIVING THIS DRAWING</small> <small>THE TECHNICAL MATERIEL CORPORATION claims proprietary right in the material disclosed hereon. This drawing is issued in confidence for engineering information only and may not be reproduced or used to manufacture anything shown hereon without permission from THE TECHNICAL MATERIEL CORPORATION to the user. This drawing is loaned for mutual assistance and is subject to recall at any time.</small>		

UNLESS OTHERWISE SPECIFIED DIMENSIONS ARE IN INCHES AND INCLUDE CHEMICALLY APPLIED OR PLATED FINISHES

TOLERANCES ON

DECIMALS	FRACTIONS
.X ± .05	± 1/64
.XX ± .01	ANGLES
.XXX ± .005	± 0° - 30'

MATERIAL

FINISH