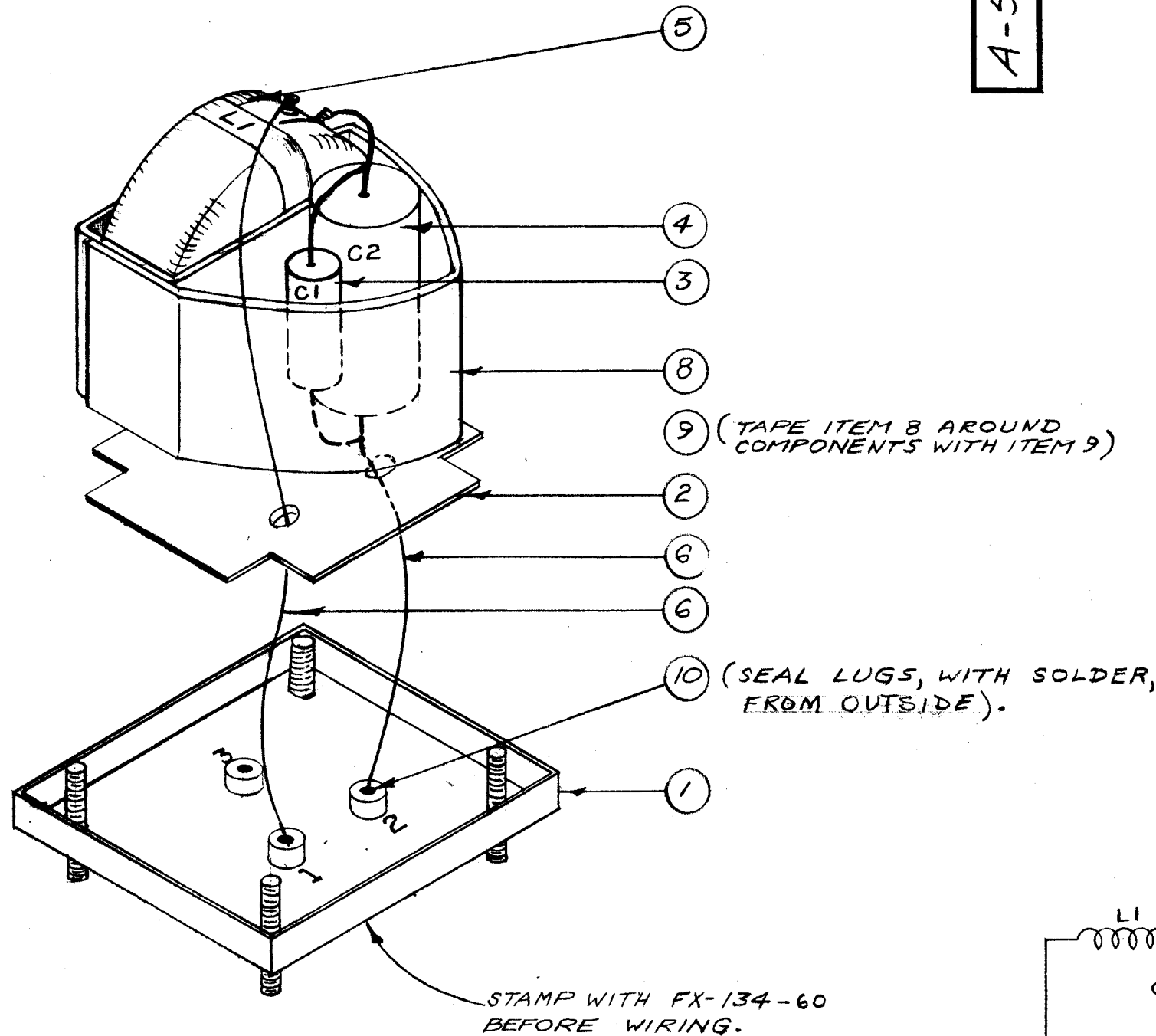


IF IT IS FOUND DESIRABLE TO CHANGE ANY TOLERANCE OR OTHER DETAIL SPECIFIED ON THIS DRAWING NOTIFY THE PURCHASER PROMPTLY.

MAXIMUM ALLOWABLE TOLERANCES HAVE BEEN DETERMINED AND DEVIATIONS WILL BE CAUSE FOR REJECTION. REMOVE ALL BURRS AND SHARP EDGES

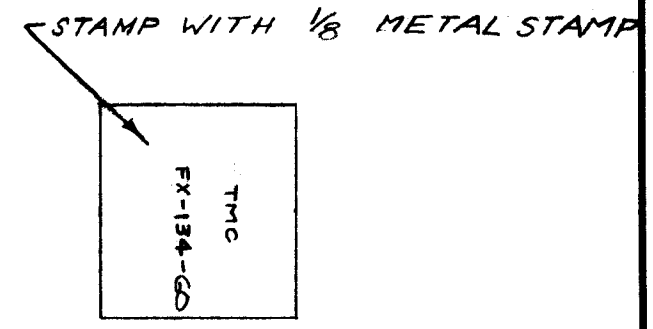
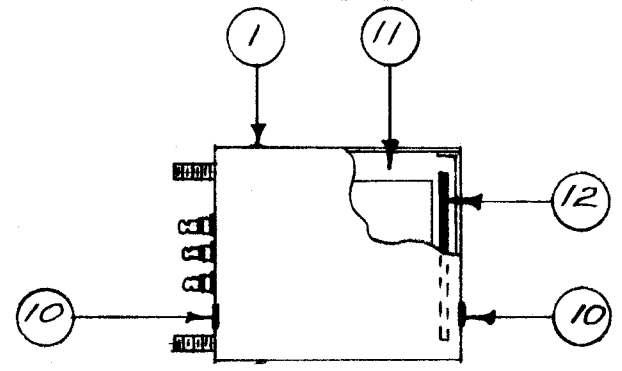
A-503 D



(TAPE ITEM 8 AROUND COMPONENTS WITH ITEM 9)

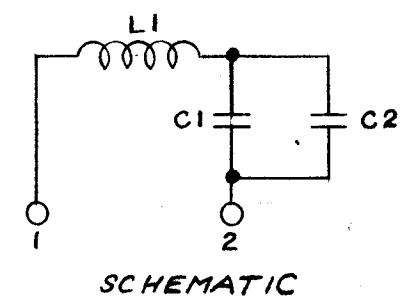
(SEAL LUGS, WITH SOLDER, FROM OUTSIDE).

STAMP WITH FX-134-60 BEFORE WIRING.



- STEPS (AFTER WIRING)
1. TEST ACCORDING TO TMC SPEC S-239. PROCEED ONLY IF TEST IS PASSED.
 2. PLACE CAN BOTTOM ASS'Y INTO CAN & SOLDER ALL AROUND BOTTOM EDGE.
 3. POUR COMPOUND (ITEM 11) APPROX. 1/4" FROM TOP OF CAN
 4. INSERT ITEM 12 ON TOP OF COMPOUND.
 5. REPEAT STEP 4
 6. INSERT TOP COVER AND SOLDER ALL AROUND.
 7. PRIME AND PAINT ENTIRE CAN (S-153) EXCEPT STUD END.

FX-134-60
MODEL RESONANCE FREQ.



| REQ. | ITEM | PART NO. | DESCRIPTION | SYMBOL |
|------|------|-------------|-------------------------|--------|
| 1 | 12 | IM-134 | INSULATION, TOP | |
| X | 11 | GL-140 | COMPOUND, POTTING | |
| X | 10 | BS-100 | SOLDER, SOFT | |
| X | 9 | TA-102-2 | ELECTRICAL TAPE | |
| 1 | 8 | IM-135 | INSULATION, SIDES | |
| # | 7 | # | DELETED | |
| | 6 | WL-100-8 | WIRE, BUSS (24 GA) | |
| 1 | 5 | CL-106-2 | COIL, TOROID 2.9 A (22) | L1 |
| 1 | 4 | CN10802004K | CAP., MYLAR 2.0 mfd. | C2 |
| 1 | 3 | CN10804243J | CAP., MYLAR 0.424 mfd. | C1 |
| 1 | 2 | IM-133 | INSULATION, BOTTOM | |
| 1 | 1 | BX-112 | CAN ASS'Y. | |

| | | |
|--|-----------------|-----------------|
| THE TECHNICAL MATERIEL CORP. MAMARONECK, NEW YORK | | |
| FILTER, ABSORPTION ASS'Y. (FX-134-60) | | |
| 16 11-24-53 | ✓ | M.H.S. |
| DRAWN | ELEC. DES. APP. | MECH. DES. APP. |
| M.H.S. | A.J.J. | |
| CHECKED | FINAL APPROVAL | |
| | A-503 | |

| ISSUE | ITEM | CHANGED FROM | DATE | CN. NO. | DRAFTS | CHECKER | ENG. APP. |
|-------|------|-----------------------------|---------|---------|--------|---------|-----------|
| D | 1 | ITEM 4 Tolerance was J | 7/8/57 | 4 | SC | P.L.X. | A.J.T. |
| C | 1 | ITEM 5, WAS "REPEAT STEP 2" | 9/1/57 | 3 | SC | HIDE | |
| B | 1 | ITEM 3 WAS 47 mfd | 8/16/55 | 2 | AS | PAID | |
| A | 1 | ITEM 7 DELETED | 12/3/54 | 1 | J.A.C. | | |

| | | |
|------------|---|---|
| TOLERANCES | | SCALE: $\frac{1}{8}$ |
| ALL OTHERS | DEC. DIM. \pm FRAC. DIM. \pm ANGULAR DIM. \pm | DRILL, PUNCH, COMMERCIAL STOCK SIZES AND MANUFACTURERS TOLERANCES ARE NOT INCLUDED. |

| | | | |
|---------------|-----------|-------------|------------|
| 1 | FX-134-60 | | 11-24-53 |
| AMT. PER UNIT | MODEL | PROJECT NO. | ASS'Y. NO. |
| | | | DATE |

USED ON