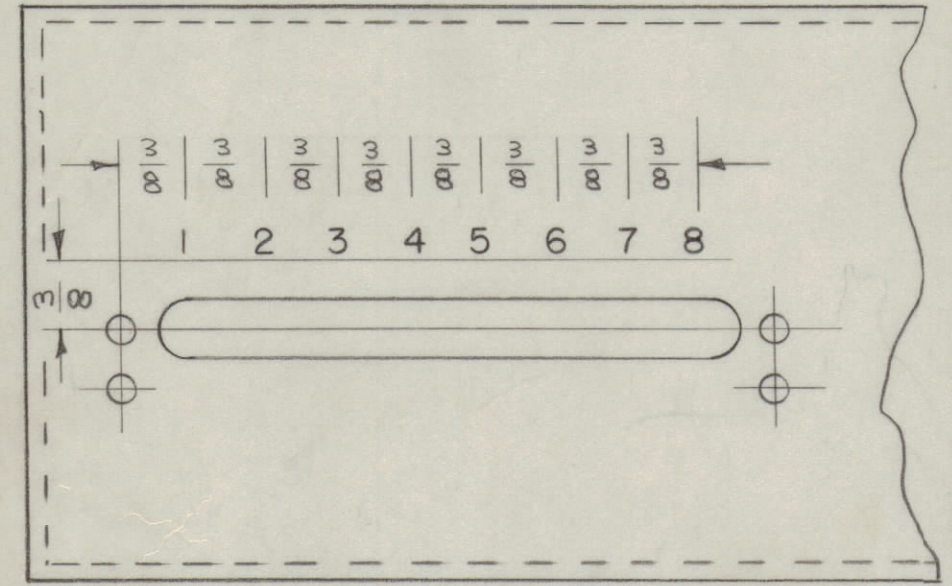
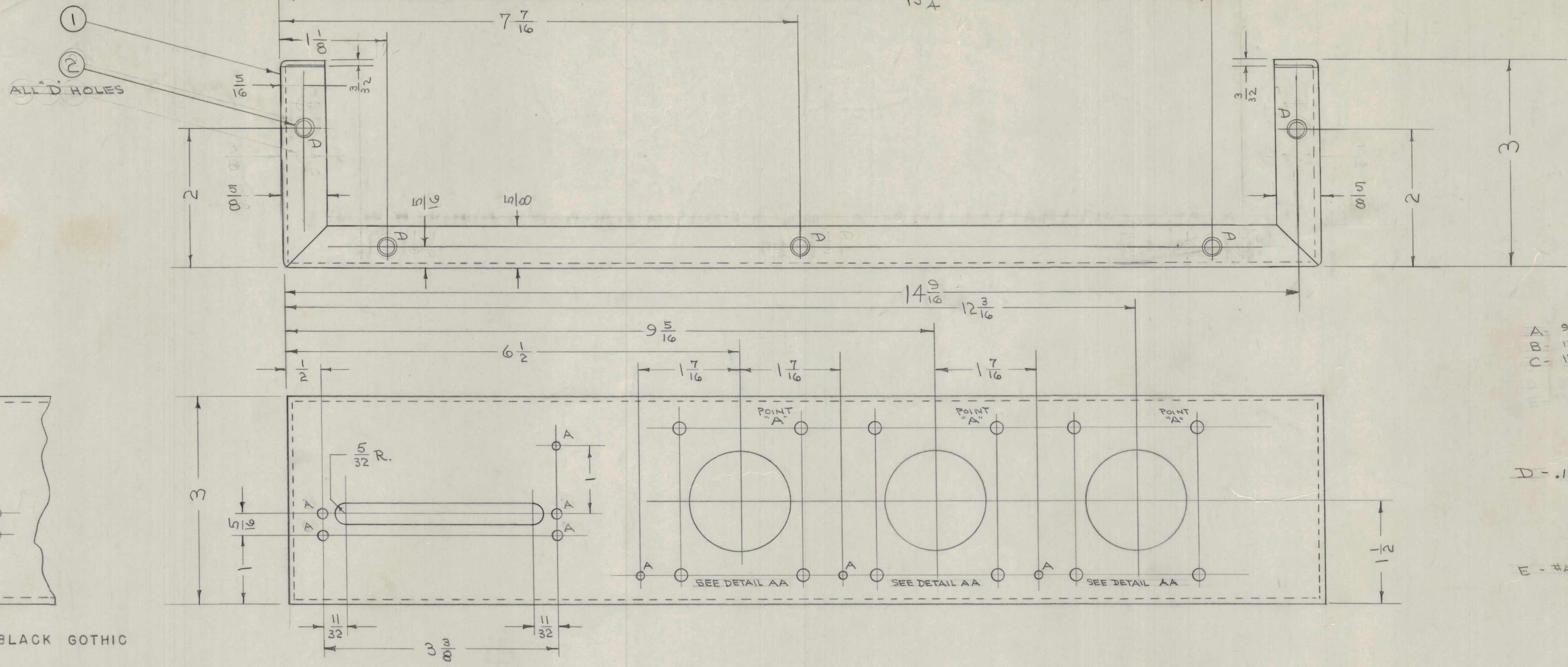


IF IT IS FOUND DESIRABLE TO CHANGE ANY TOLERANCE OR OTHER DETAIL SPECIFIED ON THIS DRAWING NOTIFY THE PURCHASER PROMPTLY.
 MAXIMUM ALLOWABLE TOLERANCES HAVE BEEN DETERMINED AND DEVIATIONS WILL BE CAUSE FOR REJECTION. REMOVE ALL BURRS AND SHARP EDGES

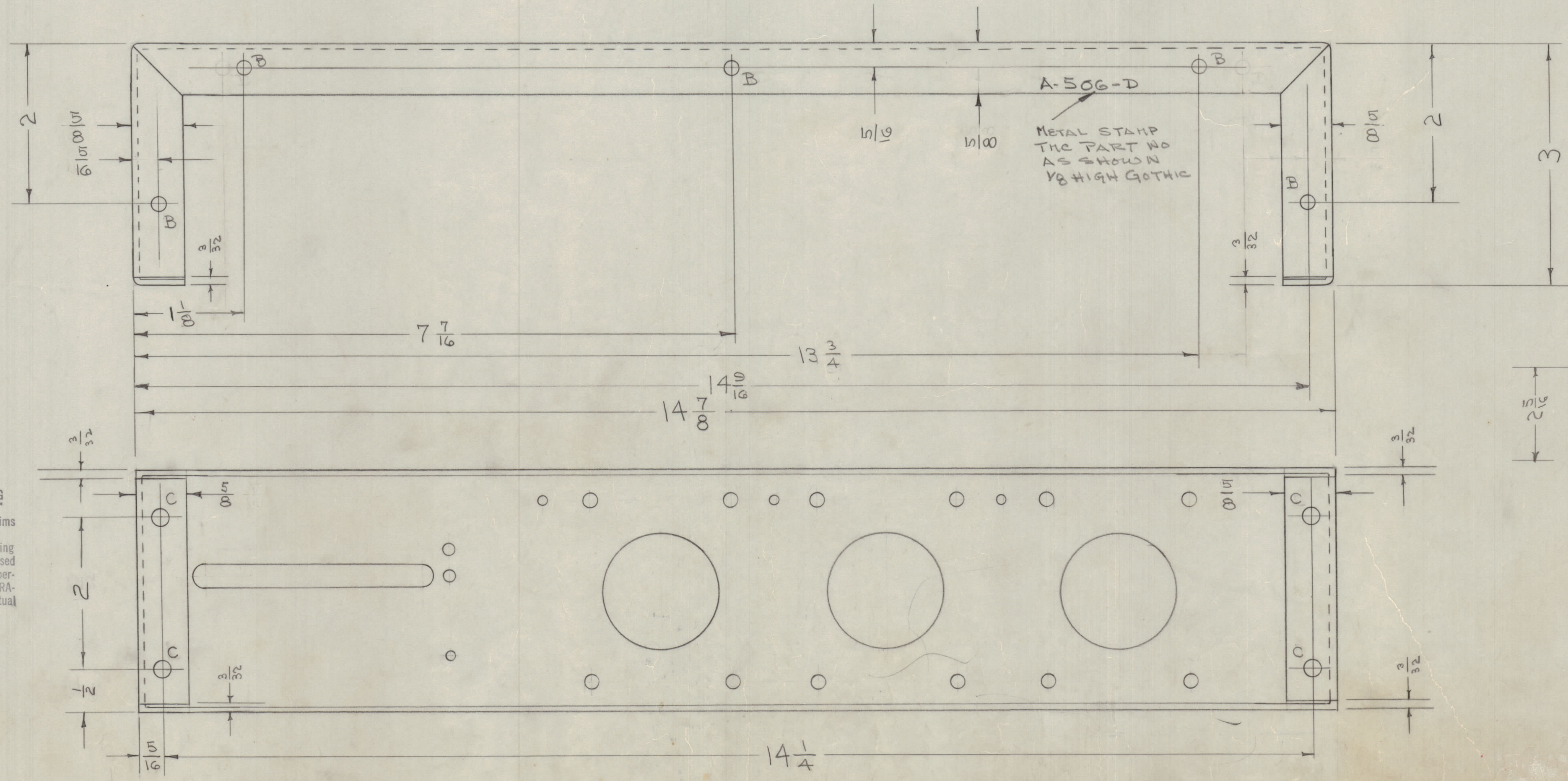


STAMPING DETAIL
 NUMERALS TO BE 1/8 HIGH, BLACK GOTHIC

A - $\frac{9}{64}$ (.140) D 8 HOLES REQ.
 B - $\frac{11}{64}$ (.171) D 17 HOLES REQ.
 C - $\frac{13}{64}$ (.203) D 4 HOLES REQ.

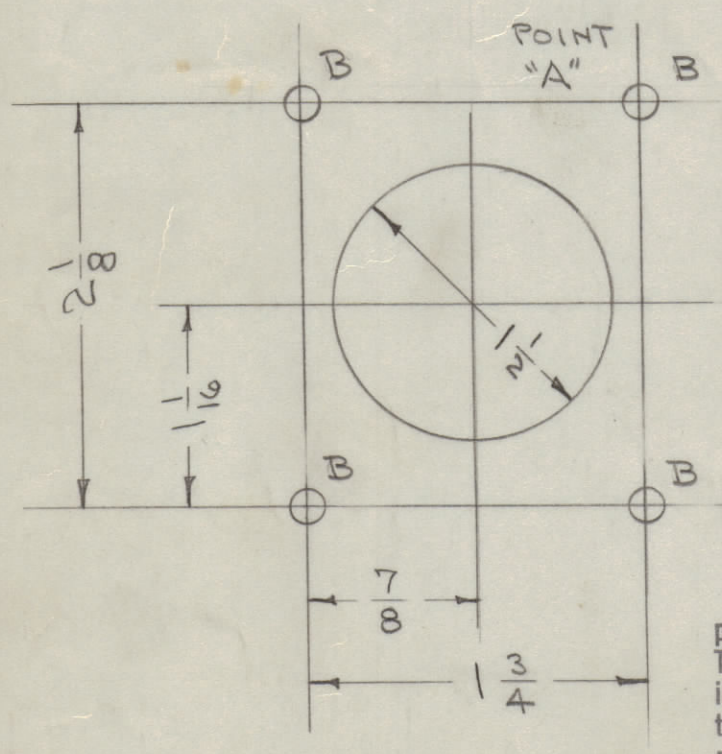
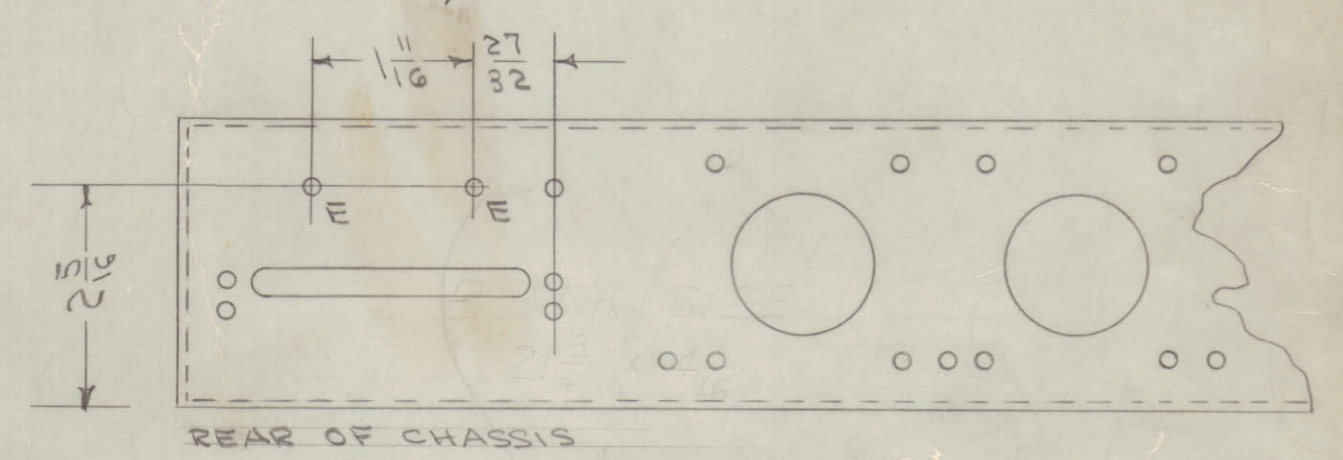
D - .194-.191 DIA 5-REQ.

E - #48 (.076) D 2 HOLES REQ.



A-506-D
 METAL STAMP
 THE PART NO
 AS SHOWN
 1/8 HIGH GOTHIC

NOTE:
 MS-381-1 AS SHOWN
 MS-381-2 FOR ALL CANADIAN UNITS.
 SEE DETAIL FOR ADDED HOLES



NOTICE TO PERSONS RECEIVING THIS DRAWING
 THE TECHNICAL MATERIEL CORPORATION claims proprietary right in the material disclosed hereon. This drawing is issued in confidence for engineering information only and may not be reproduced or used to manufacture anything shown hereon without permission from THE TECHNICAL MATERIEL CORPORATION to the user. This drawing is loaned for mutual assistance and is subject to recall at any time.

Property of:
 THE TECHNICAL MATERIEL CORPORATION
 MAMARONECK, NEW YORK

D	2	(D) HOLES WERE DR. & C SINK	10/26/52	15/32			
	1	ITEMS WERE SH-107-23					
C	1	S-404 INDIATE WAS	9/7/52	1001	A.B.		E.M.N.
B	1	S-101 CAUSTIC DIP					
		NOTE ADDED RE CANADIAN UNITS	1/14/53	2			
A	1	HOLE SIZES CHANGED	9/8/52	1			
ISSUE	ITEM	CHANGED FROM	DATE	CN. NO.	DRAFTS	CHECKER	ENG. APP.
TOLERANCES		SCALE: #					
ALL OTHERS	DEC. DIM. $\pm \frac{1}{64}$	DRILL, PUNCH, COMMERCIAL STOCK					
	FRAC. DIM. $\pm \frac{1}{32}$	SIZES AND MANUFACTURERS					
	ANGULAR DIM. \pm	TOLERANCES ARE NOT INCLUDED.					

RSF-2	170	A-748	8-18-53
MODEL	PROJECT NO.	ASSY. NO.	DATE
USED ON			

5	2	NT-129-632-4	NUT, ROUND, SWAGE TYPE	
1	1	MS-381	CHASSIS (NO DRAWING)	
REQ. ITEM	PART NO.	DESCRIPTION		SYMBOL
.064		THE TECHNICAL MATERIEL CORP.		
STOCK SIZE		MAMARONECK, NEW YORK		
ALUMINUM #		CHASSIS ASSEMBLY		
MATERIAL		WEIGHT PER PC.		
529-H32		RSF-2		
TYPE & TEMPER		C.D.D. 8-18-53 KZ		
H		DRAWN		
HEAT TREAT. SPEC.		ELEC. DES. APP.		
S-404 TRITITE		MECH. DES. APP.		
FINISH & SPEC. NO.		CHECKED		
RSF-1		FINAL APPROVAL		
		A. J. J.		
		A-506 D		

A-506
 D