

REQ. PER UNIT	USED ON	ASSY. NO.	DATE
1 EA.	RSA-2	A-519	

TMC PART NO.	ITEM NO.	DESC.
A-519-1	MS-380-1	PLATE, SIDE, LEFT
A-519-2	MS-380-2	PLATE, SIDE, RIGHT

6	5	NTH0348BN6	NUT, HEX
6	4	LMS03MRN	LOCKWASHER, SPLIT
6	3	SCFP0348BN4	SCREW, MACHINE
3	2	FS-102-1	LOCK SPRING
1	1	See Chart	PLATE, SIDE

REQ. ITEM	PART NO.	DESCRIPTION	SYMBOL
		THE TECHNICAL MATERIEL CORP. MAMARONECK. NEW YORK	
		PLATE ASSY, SIDE	

TYPE & TEMPER	HEAT TREAT. SPEC	DRAWN	CHECKED	FINAL APPROVAL
		16 7/13/63	16	<i>[Signature]</i> 4/17/65
FINISH & SPEC. NO.		A-519		

DATE	CH. NO.	DRAFTS	CHECKER	ENG. APP.
7/13/63	9581	16	<i>[Signature]</i>	<i>[Signature]</i>

SYM	DESCRIPTION	SCALE	CODE
D	RE-INSTATED & UPDATED		

UNLESS OTHERWISE SPECIFIED  
DIMENSIONS ARE IN INCHES AND INCLUDE  
CHEMICALLY APPLIED OR PLATED FINISHES

DECIMALS  
.X ± .05  
.XX ± .01  
.XXX ± .005

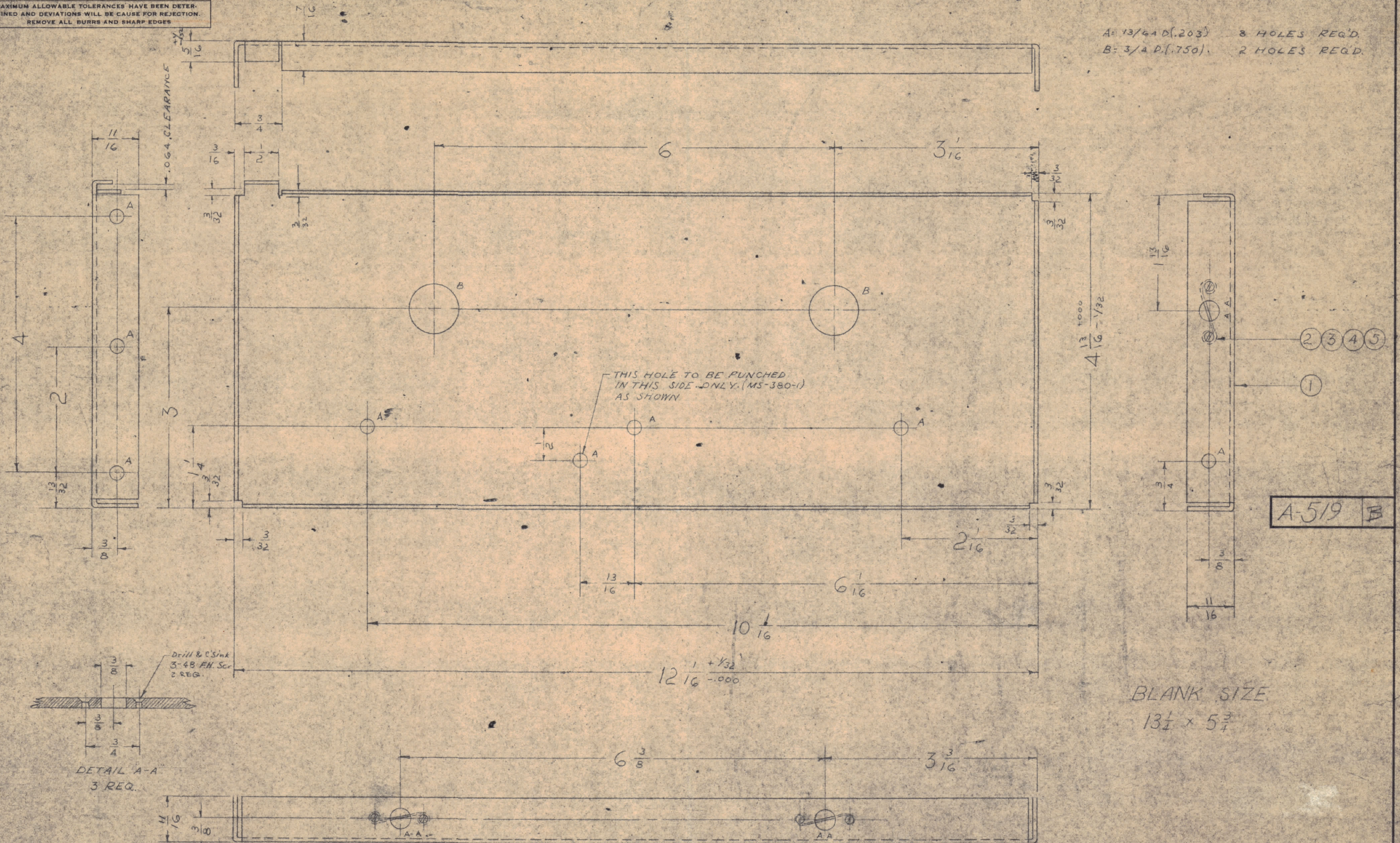
FRACTIONS  
± 1/64  
ANGLES  
± 0° 30'

TOLERANCES

IF IT IS FOUND DESIRABLE TO CHANGE ANY TOLERANCE OR OTHER DETAIL SPECIFIED ON THIS DRAWING NOTIFY THE PURCHASER PROMPTLY.

MAXIMUM ALLOWABLE TOLERANCES HAVE BEEN DETERMINED AND DEVIATIONS WILL BE CAUSE FOR REJECTION. REMOVE ALL BURRS AND SHARP EDGES.

A: 13/64 D(.203) 8 HOLES REQ'D.  
B: 3/4 D(.750) 2 HOLES REQ'D.



NOTE: MAKE ONE WITH BENDS AS SHOWN (MS-380-1 LEFT SIDE PLATE)  
MAKE ONE WITH BENDS IN OPPOSITE DIRECTION (MS-380-2 RIGHT SIDE PL)

*Out for Revision*  
*5-15-63*

B	1	S404 - IRIDIUM WAS	12-8	100%	J.	EMN	
A	2	SIDE CAUSTIC DIP	59				
	1	COMPLETE REVISION	9-28-52	1	P.B. (66)	W	
	1	RE-DRAWN					
ISSUE	ITEM	CHANGED FROM	DATE	CN. NO.	DRAFTS	CHECKER	ENG. APP.
TOLERANCES		SCALE:					
ALL OTHERS	DEC. DIM. $\pm .005$	DRILL, PUNCH, COMMERCIAL STOCK					
	FRAC. DIM. $\pm \frac{1}{64}$	SIZES AND MANUFACTURERS					
	ANGULAR DIM. $\pm$	TOLERANCES ARE NOT INCLUDED.					

6	5	NTH0348B06	NUT HEX
6	4	LW503M0C	LOCK WASHER, SPLIT
6	3	SCF5048B04	SCREW MACH.
3	2	PS-102-1	COWL FASTENER
1	1	MS-380	SIDE PLATE (NO DRWG)
REQ. ITEM	PART NO.	DESCRIPTION	
.064		THE TECHNICAL MATERIEL CORP.	
ALUMINUM		MAMARONECK, NEW YORK	
525-A 32		SIDE PLATE ASSY	
TYPE & TEMPER		MODEL RSA-2	
HEAT TREAT. SPEC.		R92850 KZ	
FINISH & SPEC. NO.		DRAWN: [Signature] ELEC. DES. APP. [Signature] MECH. DES. APP. [Signature]	
		CHECKED: [Signature] FINAL APPROVAL: [Signature]	
		SUPERCEDES RSA-1	
		A-519 B	

BSA-2	170	9-28-52
MODEL	PROJECT NO.	DATE
USED ON		