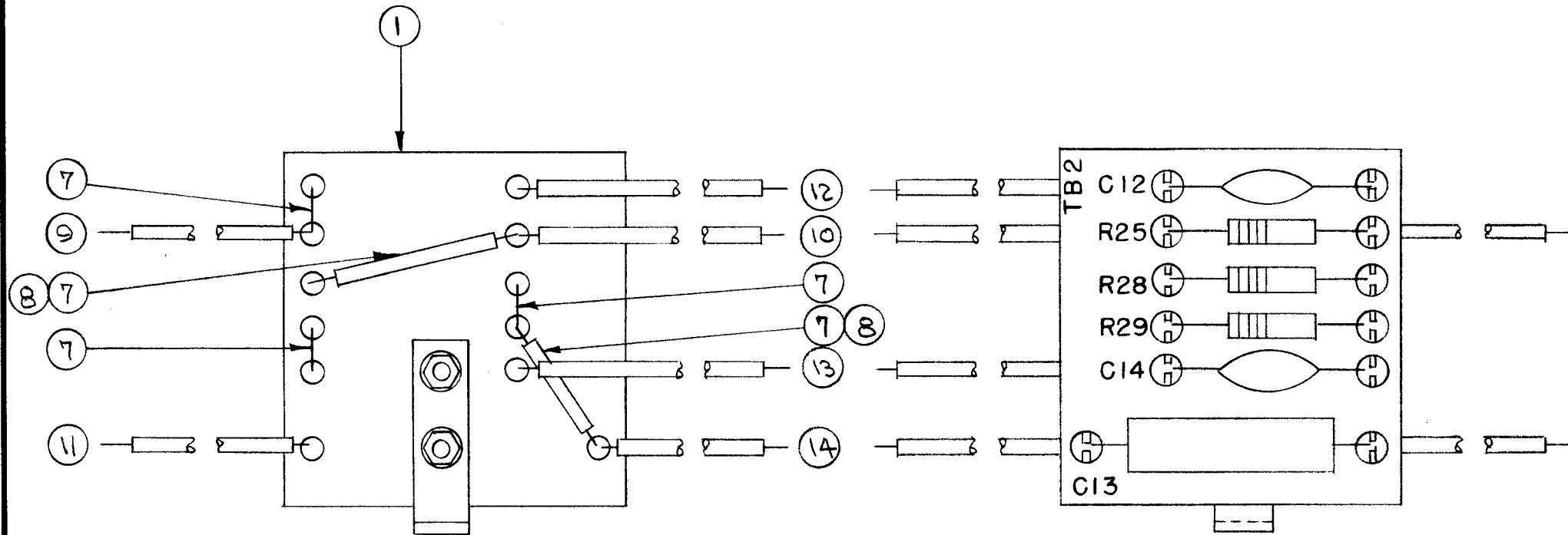


IF IT IS FOUND DESIRABLE TO CHANGE ANY TOLERANCE OR OTHER DETAIL SPECIFIED ON THIS DRAWING NOTIFY THE PURCHASER PROMPTLY.

MAXIMUM ALLOWABLE TOLERANCES HAVE BEEN DETERMINED AND DEVIATIONS WILL BE CAUSE FOR REJECTION. REMOVE ALL BURRS AND SHARP EDGES

A-555



WIRE LENGTHS FOR SRIR ARE TOTAL LENGTHS AND ALLOW 3/4" EACH END FOR STRIPPING.

X	15	BS-100	SOLDER, SOFT	
4"	14	SRIR ³ / ₅ (7)22U 96	CABLE, INSULATED (WH/BLUE)	
6 1/4"	13	SRIR ³ / ₅ (7)22U 95	" , " (WH/GRN.)	
5 1/2"	12	SRIR ³ / ₅ (7)22U 55	" , " (GRN.)	
3 3/4"	11	SRIR ³ / ₅ (7)22U 66	" , " (BLUE)	
5"	10	SRIR ³ / ₅ (7)22U 22	" , " (RED)	
5"	9	SRIR ³ / ₅ (7)22U 77	" , " (VIO.)	
X	8	PX-100-1-.022	INSULATION, SLEEVING (BLK.)	
X	7	WL-100-8	WIRE, BUSS BAR 2AGA.	
1	6	RC20GF105K	RESISTOR, FIXED	R29
1	5	RC20GF103J	" , "	R28
1	4	RC20GF683J	" , "	R25
1	3	CN-105	CAPACITOR, FIXED	C13
2	2	CC-100-16	" , "	C14 C12
1	1	A-553	TERMINAL BOARD ASSY.	

REQ.	ITEM	PART NO.	DESCRIPTION	SYMBOL
#				
STOCK SIZE				
# #				
MATERIAL WEIGHT PER PC.				
#				
TYPE & TEMPER				
#				
HEAT TREAT. SPEC.				
#				
FINISH & SPEC. NO.				

THE TECHNICAL MATERIEL CORP.		
MAMARONECK. NEW YORK		
COMPONENT ASSEMBLY		
TERM. BD. NO. 2 RSC-1		
C.D.D. 10-1-53	G.T.O	<i>W.D.</i>
DRAWN	ELEC. DES. APP.	MECH. DES. APP.
<i>J.A.D. 2.8</i>	G.T.O	<i>W.D.</i>
CHECKED	FINAL APPROVAL	
A-555		

ISSUE	ITEM	CHANGED FROM	DATE	CN. NO.	DRAFTS	CHECKER	ENG. APP.
TOLERANCES							
SCALE: #							
DRILL, PUNCH, COMMERCIAL STOCK SIZES AND MANUFACTURERS TOLERANCES ARE NOT INCLUDED.							

RSC-1	170		10-1-53
MODEL	PROJECT NO.	ASS'Y. NO.	DATE
USED ON			