

IF IT IS FOUND DESIRABLE TO CHANGE ANY TOLERANCE OR OTHER DETAIL SPECIFIED ON THIS DRAWING NOTIFY THE PURCHASER PROMPTLY.

MAXIMUM ALLOWABLE TOLERANCES HAVE BEEN DETERMINED AND DEVIATIONS WILL BE CAUSE FOR REJECTION. REMOVE ALL BURRS AND SHARP EDGES

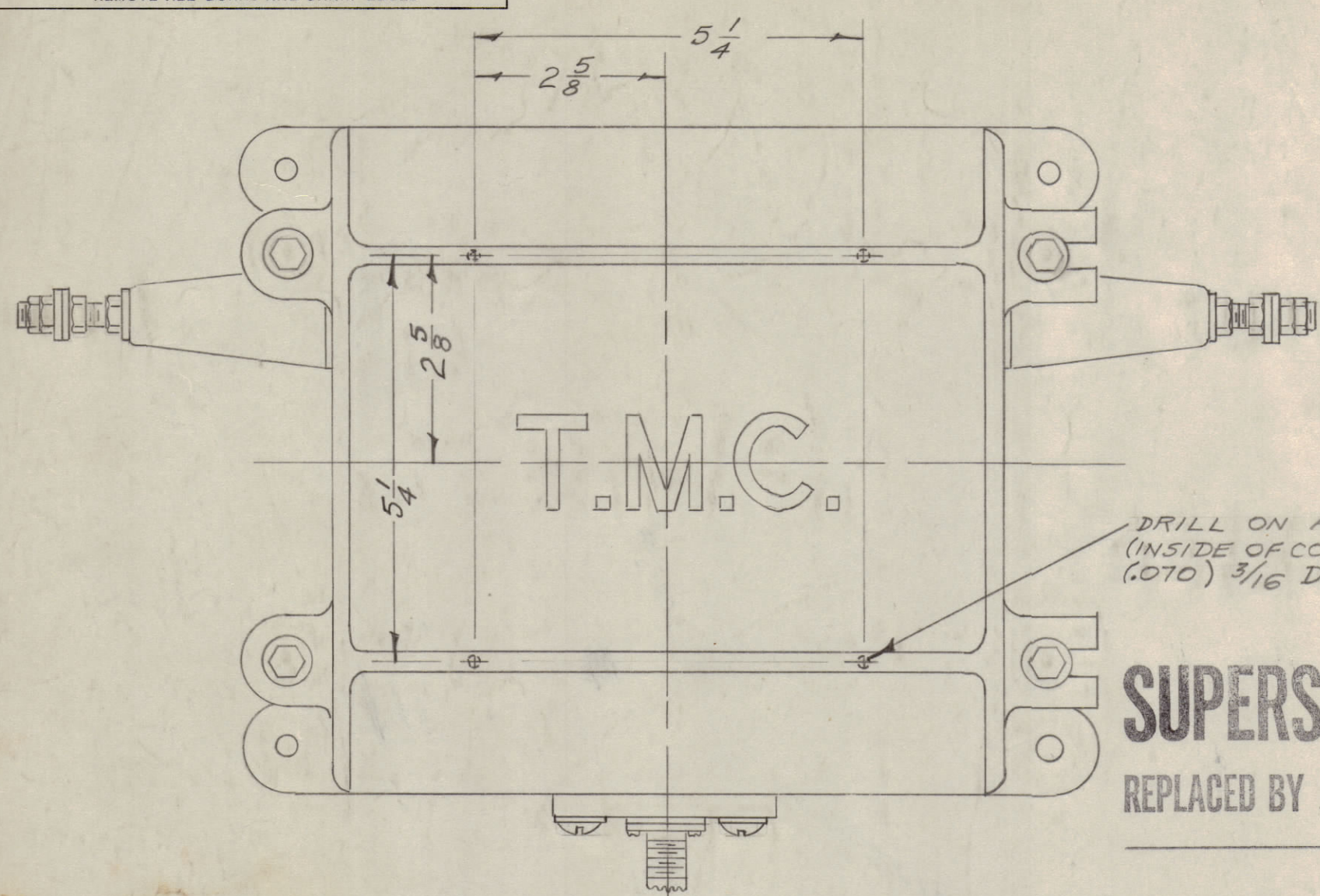
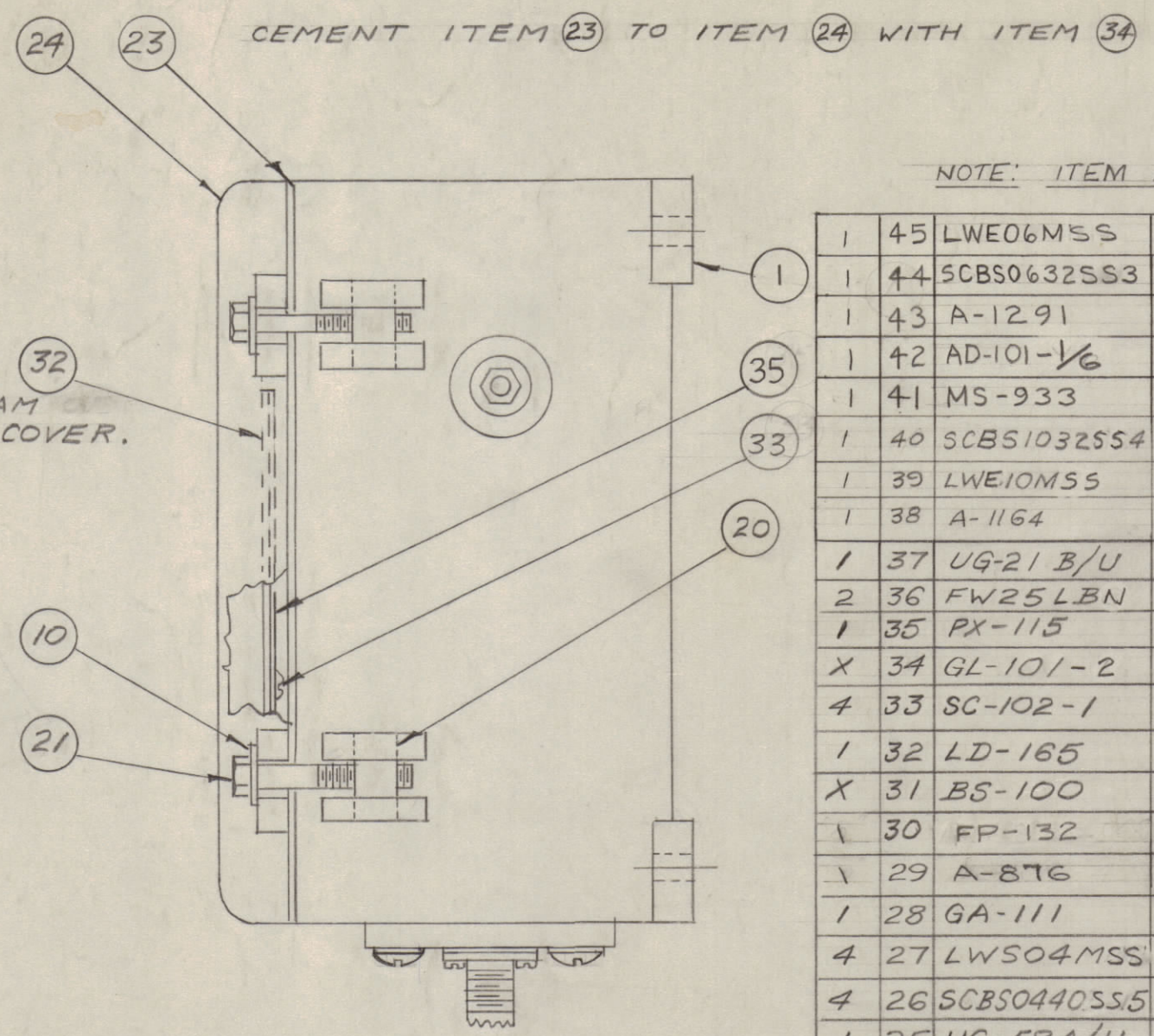


DIAGRAM INSIDE COVER.

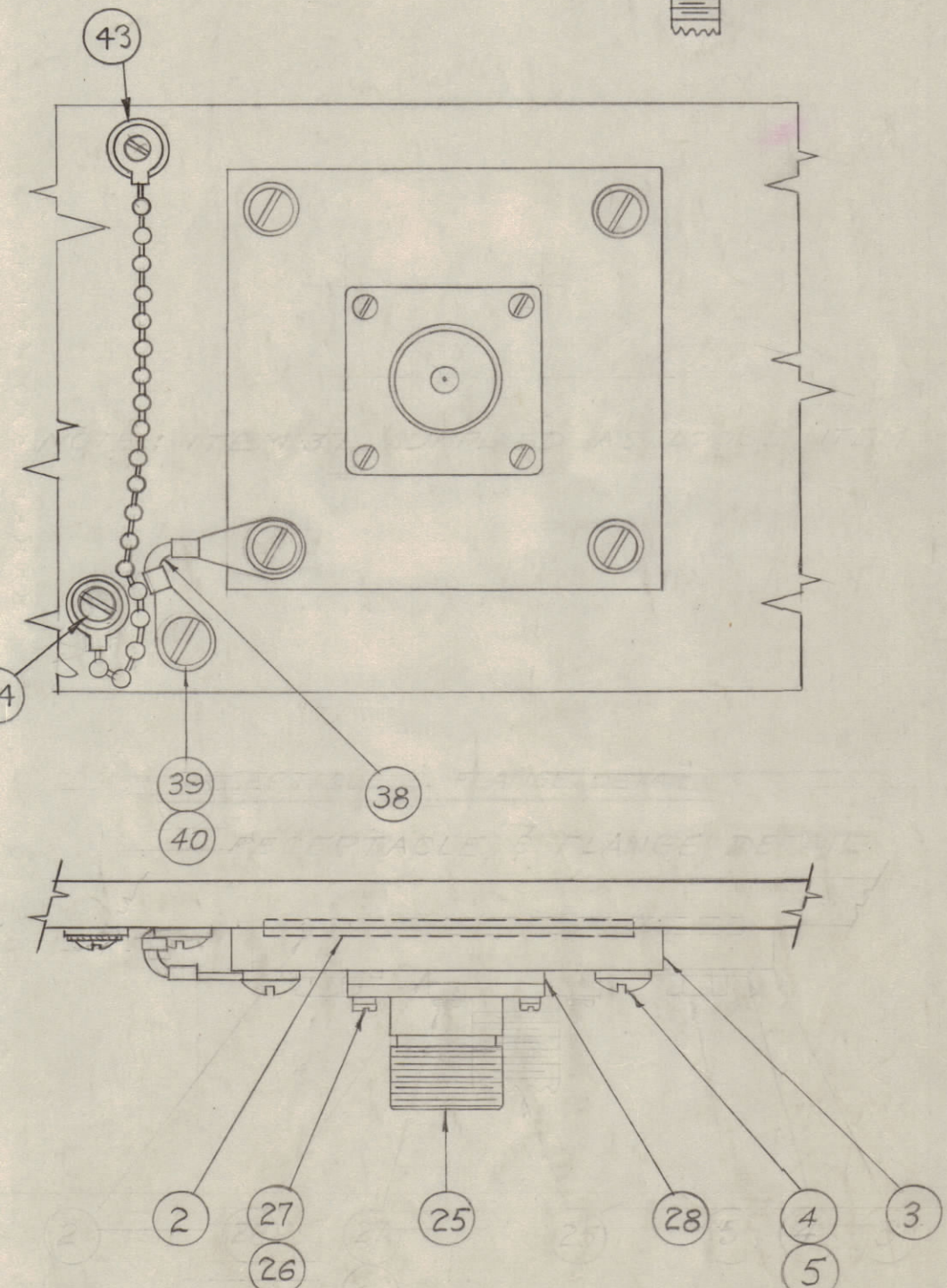
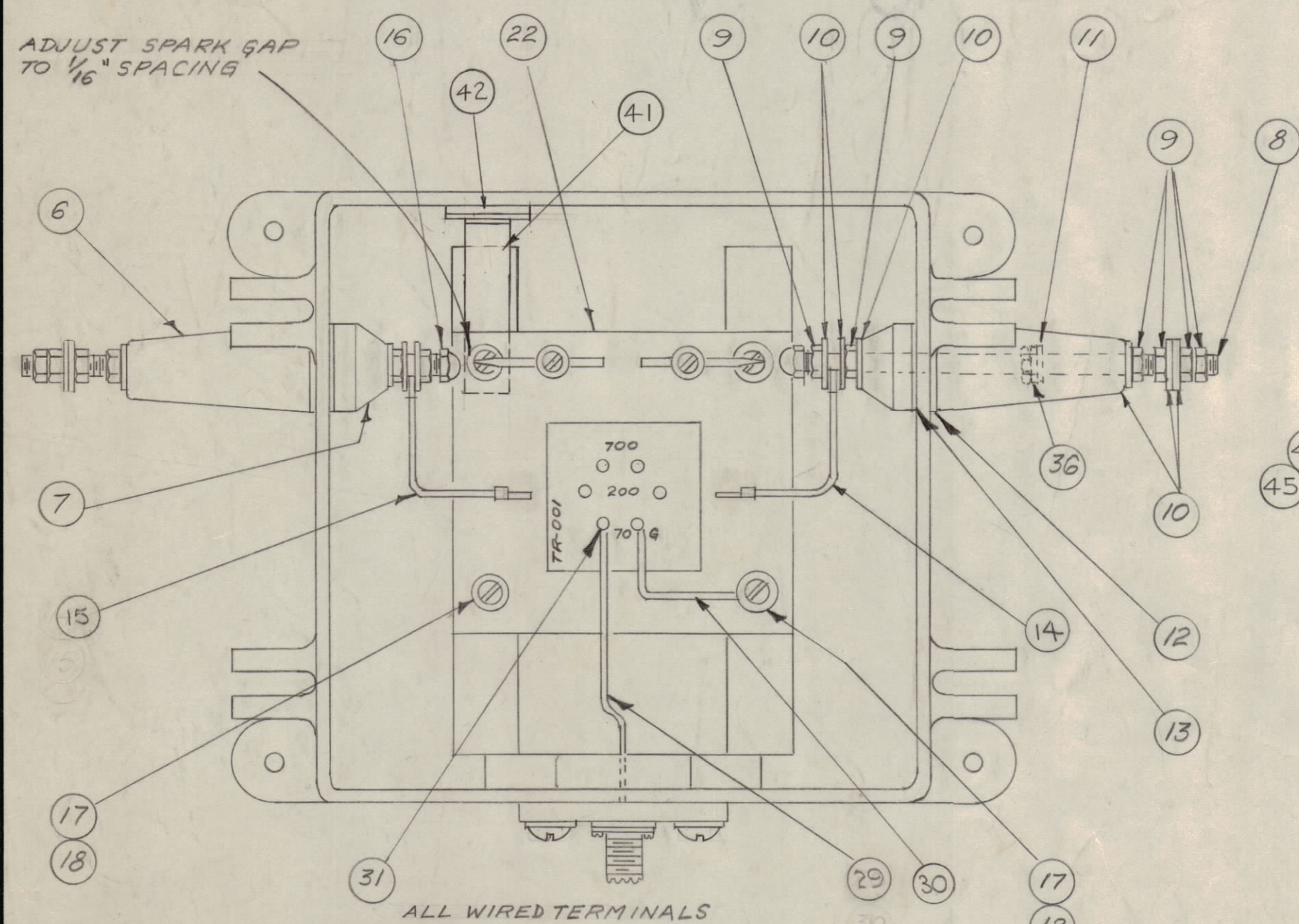
DRILL ON ASSEMBLY (INSIDE OF COVER) #50 (.070) 3/16 DEEP. 4 REQ.

SUPERSEDED
REPLACED BY A-3080-1



NOTE: ITEM 37 SUPPLIED AS LOOSE ITEM

1	45	LWE06MSS	LOCKWASHER EXT.
1	44	SCBS0632SS3	SCREW, MACHINE
1	43	A-1291	DRAIN PLUG, ASSY
1	42	AD-101-1/16	DESSICANT
1	41	MS-933	HOLDER, DESSICANT
1	40	SCBS1032SS4	SCREW MACHINE
1	39	LWE10MSS	LOCKWASHER
1	38	A-1164	GROUND STRAP CASE
1	37	UG-21 B/U	CONNECTOR, PLUG
2	36	FW25LBN	WASHER, FLAT
1	35	PX-115	GUARD
X	34	GL-101-2	CEMENT, PLIOBOND
4	33	SC-102-1	SCREW, THREAD CUTTING
1	32	LD-165	SCHEMATIC DIAGRAM
X	31	BS-100	SOLDER, SOFT
1	30	FP-132	CONNECTOR, GROUND
1	29	A-876	CONNECTOR, COAX. ASSY
1	28	GA-111	GASKET
4	27	LWS04MSS	LOCKWASHER, SPLIT
4	26	SCBS0440SS5	SCREW, MACH.
1	25	UG-58A/U	RECEPTACLE
1	24	PM-105	COVER
1	23	GA-103	GASKET, COVER
1	22	A-105	TRANSFORMER, SUB-ASS'Y



A-574 F

4	21	SC-108-9	BOLT, HEX.
4	20	PM-100	PIN, COVER BOLT
1	19	FW08MBN	WASHER, FLAT
4	18	LWE08MRN	WASHER, LOCK
4	17	SCBS0832BNG	SCREW, MACH.
2	16	NTC2520BNL	NUT, CAP
1	15	A-849	CONNECTOR, INSUL. LEFT
1	14	A-848	" " RIGHT
2	13	GA-101	GASKET
2	12	GA-100	GASKET
2	11	GA-104	GASKET
16	10	FW25MSS	WASHER, FLAT
12	9	NTH2520SS14	NUT, HEX.
2	8	A-100	STUD, SUB-ASS'Y.
2	7	NS-101	INSULATOR, INSIDE
2	6	NS-100	INSULATOR, OUTSIDE
4	5	SCR2520SS12	BOLT, HEX.
4	4	LWS25MSS	LOCKWASHER, SPLIT
1	3	PM-119	FLANGE
1	2	GA-102	GASKET
1	1	PM-106	CASE

D	3	ITEM 10 - QUAN. WAS 20	8	28	1			
	2	ALL HARDWARE WAS CAD-PLATED	30	7				
	1	ITEMS 41-45 ADDED	60					
C	1	FP-132 SUPERCEDES A-850	2057	3				
B	1	COMPLETELY REVISED	12-27-54	2				
A	2	A-848, 849, 850-876 ADDED	12/20/55	1				
	1	SLEEVING & BUSHING ADDED						

F	"SUPERSEDED" NOTE ADDED	6964	11509	ARB	2			
E	ITEM 26 WAS SCBS0440BNS, 27 WAS LWS04MRC	8-17-62	7076	GS	16			
	ITEM 44 WAS SCBS0632BC3, 45 WAS LWE06MRC.							
ISSUE	CHANGED FROM	DATE	CN. NO.	DRAFT	CHECK	ENG.		

RAC-2				10-28-53	
MODEL	PROJECT NO.	ASSY. NO.	DATE		

REQ. ITEM	PART NO.	DESCRIPTION	SYMBOL
THE TECHNICAL MATERIEL CORP. MAMARONECK, NEW YORK			
STOCK SIZE			
CASE & COVER ASSEMBLY			
MATERIAL WEIGHT PER PC.			
TYPE & TEMPER			
HEAT TREAT. SPEC.			
FINISH & SPEC. NO.			