

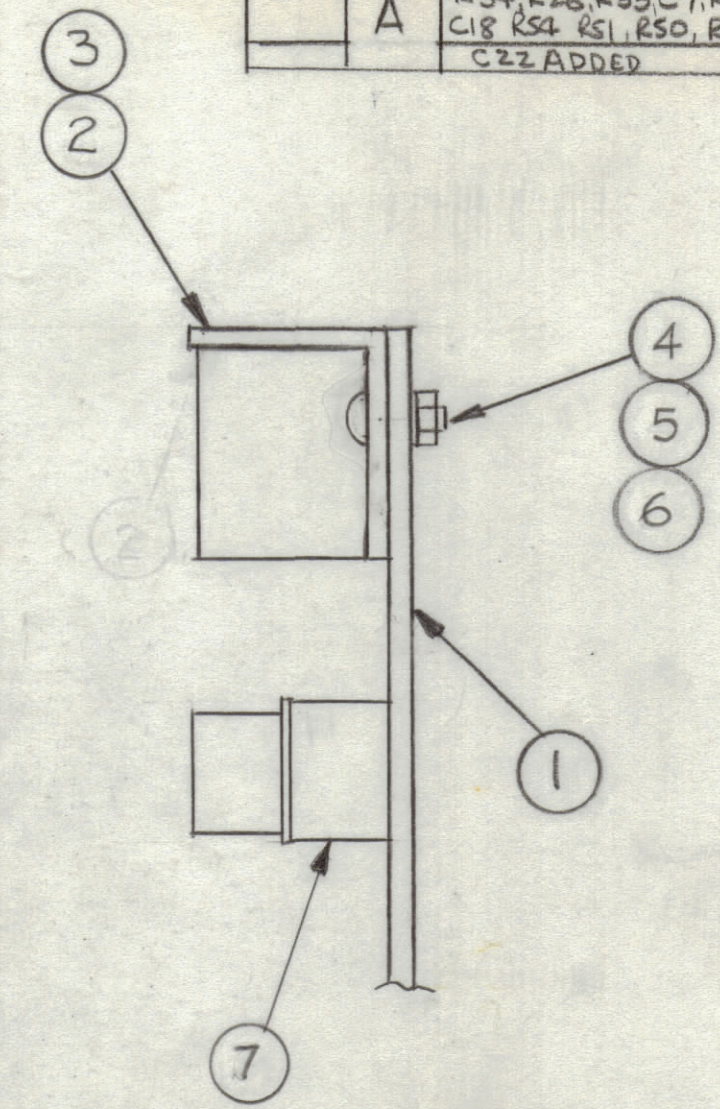
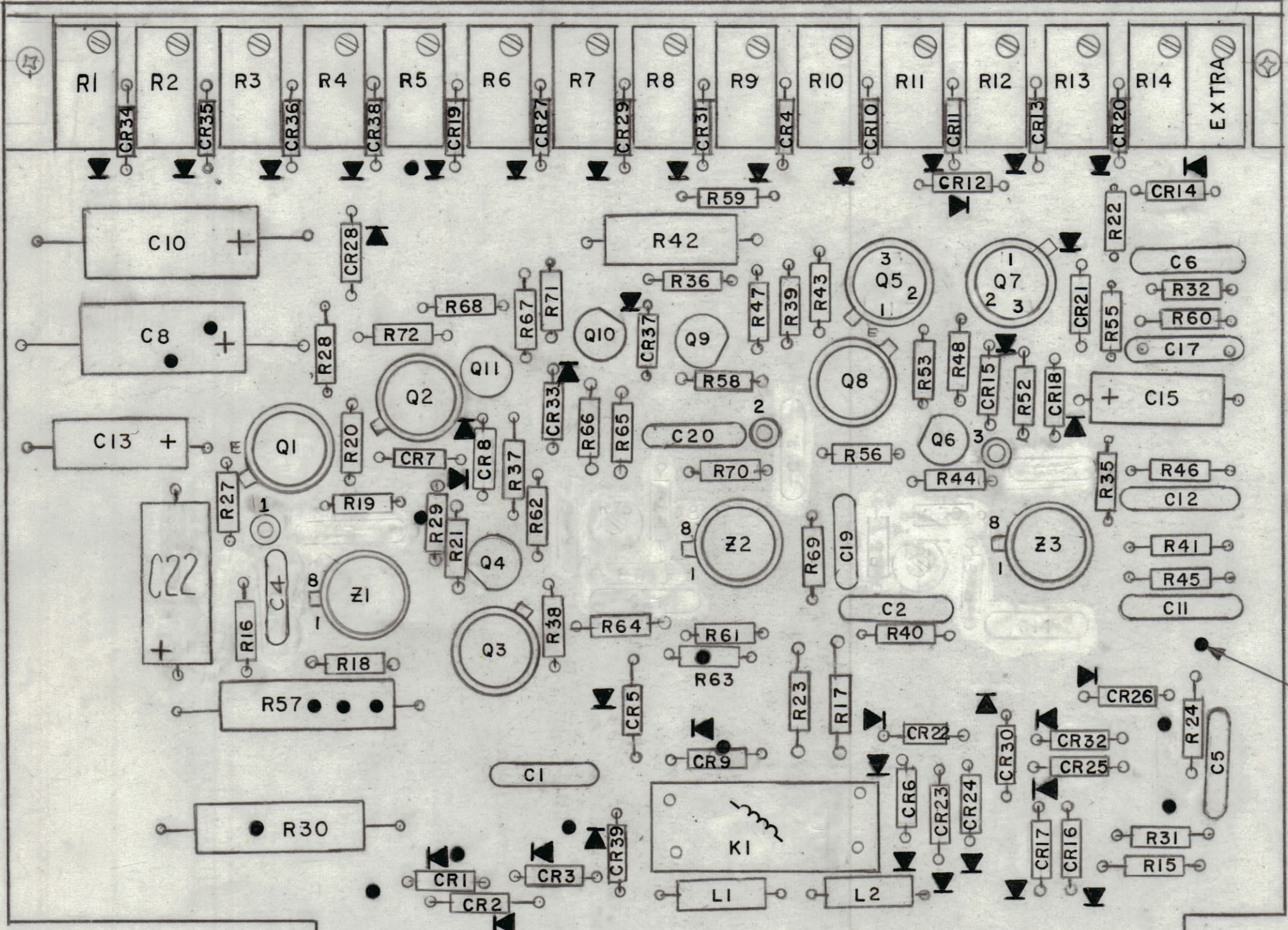
4

3

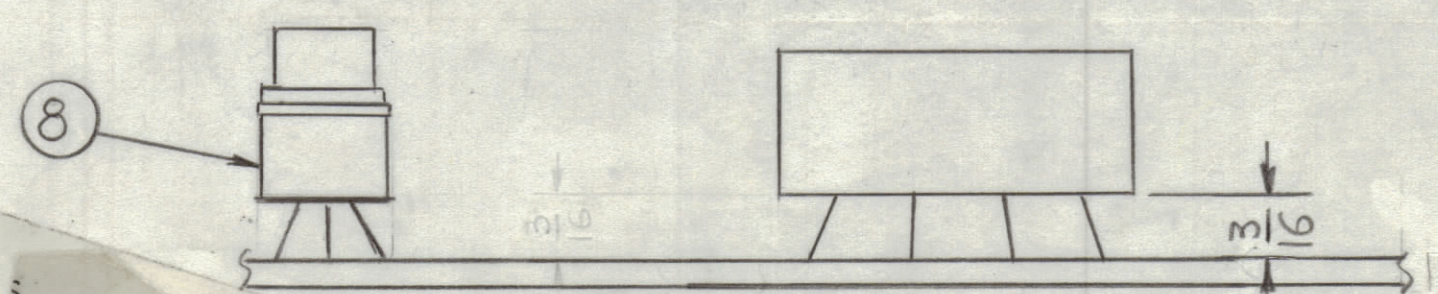
2

1

REVISIONS						
ZONE	LTR	DESCRIPTION	DATE	E.M.N.NO	DRAFT	CHKD APPD
	Ø	ORIG. RELEASE FOR PROD	10/28/76		EDL	APB *
A		R34, R26, R33, C7, R25, C3, R76, R75, R73, C21, C18, R54, R51, R50, R49, C14, C9, R77 DELETED C22 ADDED			21554	



FILL WITH SOLDER



QTY. REQ.	ITEM	PART NO.	DESCRIPTION	SYMBOL
X	9	BS100	SOLDER, TIN ALLOY	
3	8	TS213-1	SOCKET	Z1, Z2, Z3
2	7	TS212	SOCKET, TIN ALLOY	Q5, Q6
2	6	NTH0256BNG	NUT, HEX	
2	5	LW502.MPN.	LOCKWASHER	
2	4	SCB0256BN6	SCREW, MACHINE	
2	3	LD3052	MARKIN BAND IDENT	
1	2	MS 6734	PLATE, BAND IDENT.	
1	1	PC 743	PRINTED CIRCUIT BOARD	

LIST OF MATERIAL			
THE TECHNICAL MATERIEL CORP. MAMARONECK, NEW YORK			
ASSY PRINTED CIRCUIT BD PRE-POSITION			
SIZE	CODE IDENT.NO	DWG NO.	ISSUE
C	82679	A 5639	A
SCALE 2:1		SHEET OF	

UNLESS OTHERWISE SPECIFIED DIMENSIONS ARE IN INCHES AND INCLUDE CHEMICALLY APPLIED OR PLATED FINISHES		FINAL APPROVAL * G.D.L.	DATE
TOLERANCES ON		MECH. DES.	DATE
DECIMALS	FRACTIONS	ELECT. DES.	DATE
.X ± .05	± 1/64	CHECKED K.P.	DATE 10/20/76
.XX ± .01	ANGLES	DRAWN G.D.L.	DATE 8-27-76
.XXX ± .005	± 0° -30'		

1	ATSA-3	A5639
QTY / UNIT	MODEL USED ON	ASS'Y NO.
APPLICATION		
	CODE	
NOTICE TO PERSONS RECEIVING THIS DRAWING		
THE TECHNICAL MATERIEL CORPORATION claims proprietary right in the material disclosed herein. This drawing is issued in confidence for engineering information only and may not be reproduced or used to manufacture anything shown hereon without permission from THE TECHNICAL MATERIEL CORPORATION to the user. This drawing is loaned for mutual assistance and is subject to recall at any time.		

- TO MOUNT COMPONENTS INSERT LEADS THROUGH HOLES.
- CAUTION, WHEN APPLYING HEAT & SOLDER TO LEAD & FOIL.
- CLEAN & INSPECT AS PER SPEC S676.
- FOR ELECTRICAL COMPONENT PART NUMBERS REFER TO NPL A
- USE SYMBOL NUMBERS FOR ASSY. REF.