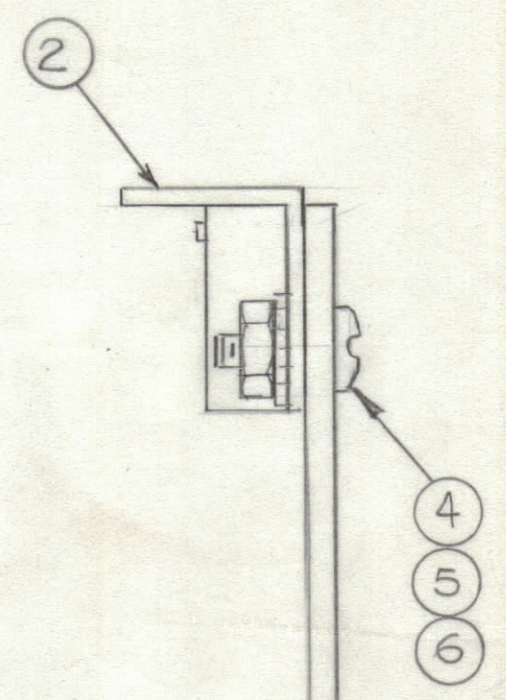
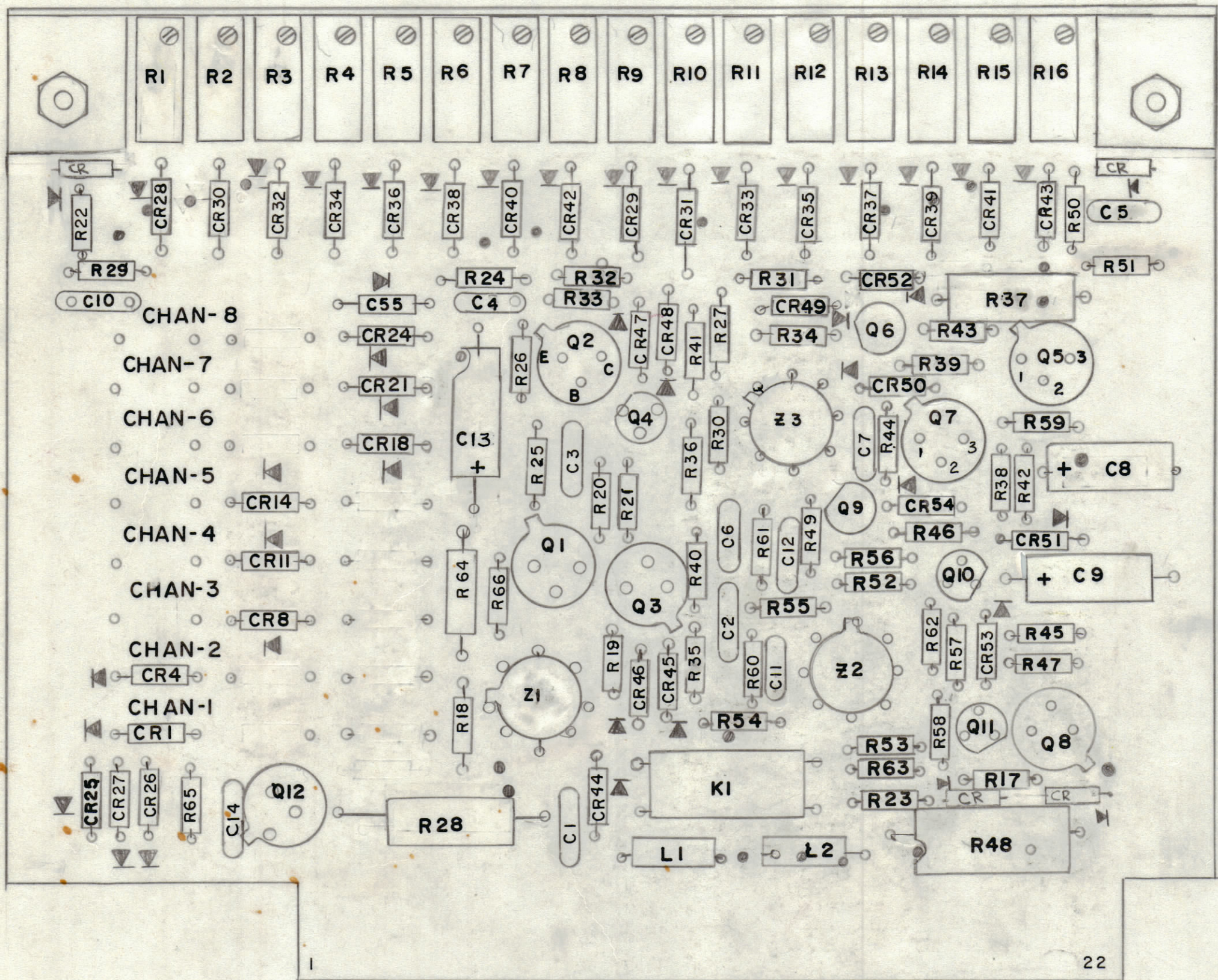


REVISIONS						
ZONE	LTR	DESCRIPTION	DATE	E.M.N.NO	DRAFT	CHKD APPD
	X1	Z1 WAS Q12, CR54 WAS CR39	2-12-80			
	1		5-6-80			



ASSEMBLY NOTES

1. TO MOUNT COMPONENTS INSERT LEADS THROUGH HOLES.
2. CAUTION, WHEN APPLYING HEAT & SOLDER TO LEAD & FOIL.
3. CLEAN & INSPECT AS PER SPEC S676.
4. FOR ELECTRICAL COMPONENT PART NUMBERS REFER TO NPL A
5. USE SYMBOL NUMBERS FOR ASSY. REF.

QTY / UNIT	1	MODEL USED ON	ATS-3C	ASS'Y NO.	
APPLICATION					
CODE					

NOTICE TO PERSONS RECEIVING THIS DRAWING
 THE TECHNICAL MATERIEL CORPORATION claims proprietary right in the material disclosed hereon. This drawing is issued in confidence for engineering information only and may not be reproduced or used to manufacture anything shown hereon without permission from THE TECHNICAL MATERIEL CORPORATION to the user. This drawing is loaned for mutual assistance and is subject to recall at any time.

REF. CK2227

UNLESS OTHERWISE SPECIFIED DIMENSIONS ARE IN INCHES AND INCLUDE CHEMICALLY APPLIED OR PLATED FINISHES	
TOLERANCES ON	
DECIMALS	FRACTIONS
.X ± .05	± 1/64
.XX ± .01	ANGLES
.XXX ± .005	± 0° -30'

MATERIAL	
FINISH	

QTY. REQ.	ITEM	PART NO.	DESCRIPTION	SYMBOL
1	G	NTH0632 BN10	NUT - PLN HEX.	
1	5	LWE06 MRN	LOCK WASHER EXT	
1	4	SCBP0632 BN7	SCREW, MACHINE	
X	3	BS 100	SOLDER, TIN ALLOY	
1	2	MS6979/LD3117	PLATE IDENT.	
1	1	PC 817	PRINTED CIRCUIT BD	

LIST OF MATERIAL
THE TECHNICAL MATERIEL CORP.
 MAMARONECK, NEW YORK

ASSY PRINTED CIRCUIT BD.
PRE-POSITION

SIZE	CODE IDENT.NO.	DWG NO.	ISSUE
C	82679	A5779	1
SCALE	2:1		SHEET OF