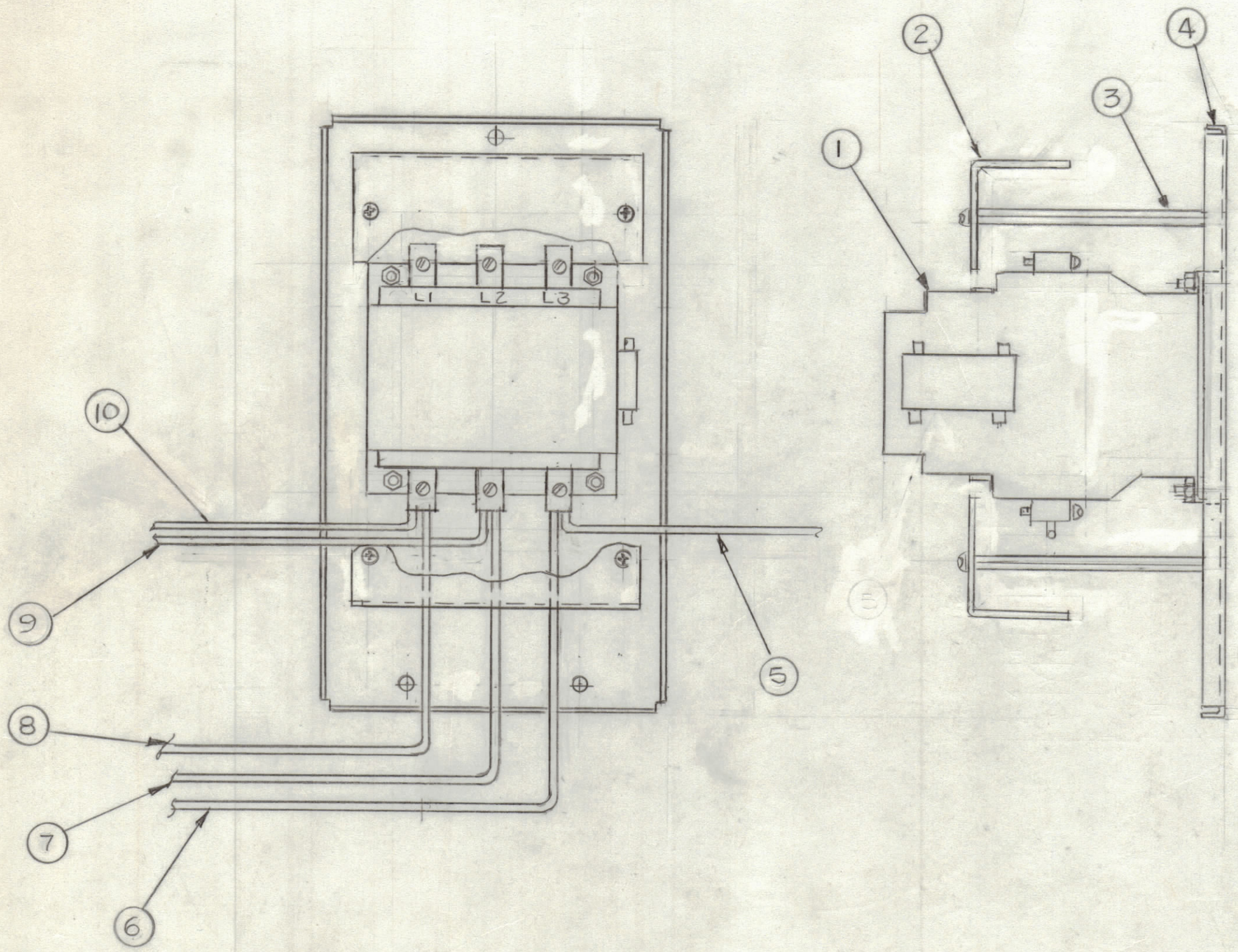


REVISIONS						
ZONE	LTR	DESCRIPTION	DATE	E.M.N.NO	DRAFT	CHKD APPD
	φ	ORIGINAL RELEASE	5-17-81		GDL	



NOTE: SHIP ID 451 DWG TO  
CUSTOMER WITH EACH RL130-6

QTY. REQ.	ITEM	PART NO.	DESCRIPTION	SYMBOL
15"	10	HWC10(37)B9	CABLE, INSULATION	
15"	9	HWC10(37)B9		
24"	8	HWC6(127)B9		
24"	7	HWC6(127)B93		
24"	6	HWC6(127)B91	CABLE, INSULATION	
15"	5	HWC10(37)B9	CABLE, INSULATION	
1	4	MS 7066	PLATE, MTG RELAY	
4	3	TE 0832AN4.000R4	SPACER, THREAD	
2	2	PX 1285	COVER, RELAY	
1	1	PO 340	RELAY, 3 POLE	

LIST OF MATERIAL			
<p>UNLESS OTHERWISE SPECIFIED DIMENSIONS ARE IN INCHES AND INCLUDE CHEMICALLY APPLIED OR PLATED FINISHES</p>			
<p>TOLERANCES ON</p> <p>DECIMALS      FRACTIONS</p> <p>.X ± .05          ± 1/64</p> <p>.XX ± .01        ANGLES</p> <p>.XXX ± .005     ± 0° -30'</p>		<p>FINAL APPROVAL: <i>GDL</i>      DATE: 10/8/81</p> <p>MECH. DES.      DATE</p> <p>ELECT. DES.      DATE</p> <p>CHECKED      DATE</p> <p>DRAWN: <i>G.D.L.</i>      DATE: 10/8/81</p>	
<p><b>THE TECHNICAL MATERIEL CORP.</b> MAMARONECK, NEW YORK</p>			
<p><b>ASSEMBLY 3 POLE RELAY, RL130-6</b></p>			
SIZE	CODE IDENT. NO.	DWG NO.	ISSUE
C	82679	A 5792	φ
SCALE	SHEET		OF
1:2			

QTY / UNIT	MODEL USED ON	ASS'Y NO.
1	GPT-10K	ID 451
APPLICATION		
	CODE	
<p>NOTICE TO PERSONS RECEIVING THIS DRAWING</p> <p>THE TECHNICAL MATERIEL CORPORATION claims proprietary right in the material disclosed hereon. This drawing is issued in confidence for engineering information only and may not be reproduced or used to manufacture anything shown hereon without permission from THE TECHNICAL MATERIEL CORPORATION to the user. This drawing is loaned for mutual assistance and is subject to recall at any time.</p>		
MATERIAL		
FINISH		