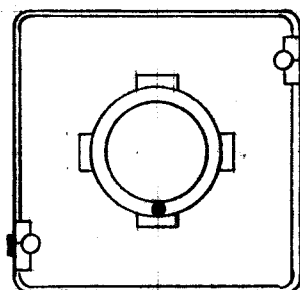


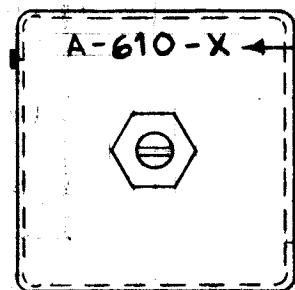
IF IT IS FOUND DESIRABLE TO CHANGE ANY TOLERANCE OR OTHER DETAIL SPECIFIED ON THIS DRAWING NOTIFY THE PURCHASER PROMPTLY.

MAXIMUM ALLOWABLE TOLERANCES HAVE BEEN DETERMINED AND DEVIATIONS WILL BE CAUSE FOR REJECTION. REMOVE ALL BURRS AND SHARP EDGES

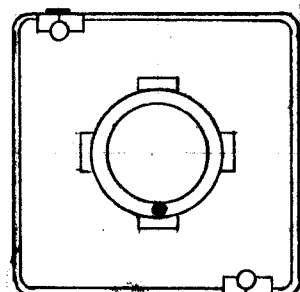
TMC PART NO.	FOR ITEM USE	REF SYMBOL	REQ PER UNIT
A-610-1	A-245	L 203	1
A-610-2	A-246	L 205	1
A-610-3	A-247	L 206	1
A-610-4	A-248	L 207	1
A-610-5	A-249	L 208	1



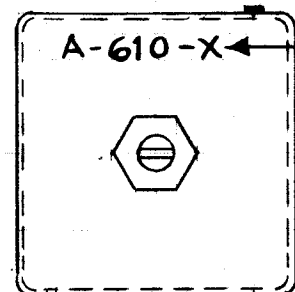
A-245
A-246



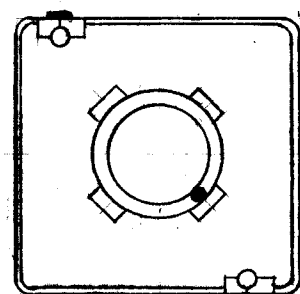
A-610-1
A-610-2



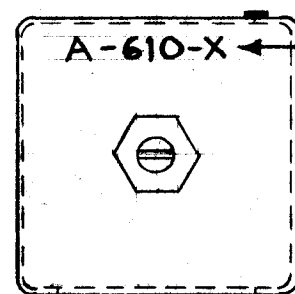
A-247
A-248



A-610-3
A-610-4



A-249

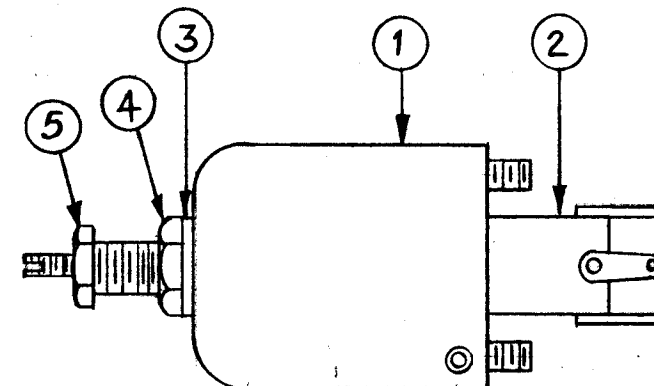


A-610-5

BOTTOM VIEW
PLACE COIL IN CAN AS SHOWN.
NOTE POSITION OF BLACK DOT ON COIL IN CAN.

TOP VIEW
NOTE POSITION OF SPADE LUGS.

STAMP TMC PART NO. 1/8 HIGH BLACK GOTHIC.
SEE CHART FOR TMC PART NO.



REQ.	ITEM	PART NO.	DESCRIPTION	SYMBOL
1	5	NTH0632BN8	NUT, HEX.	
1	4	NTH2528BN14	NUT, HEX.	
1	3	LWI 25 MRN	LOCKWASHER, INTERNAL	
X	2	SEE CHART	INDUCTOR, VARIABLE	
5	1	A-425	I.F. CAN ASSY.	
			THE TECHNICAL MATERIEL CORP. MAMARONECK. NEW YORK	
			I.F. INDUCTOR ASSY.	
			VOX	
			C.D.D. 12-2-53	
			DRAWN	
			ELEC. DES. APP.	
			MECH. DES. APP.	
			CHECKED	
			FINAL APPROVAL	
			A-610 B	

ISSUE	ITEM	CHANGED FROM	DATE	CN. NO.	DRAFTS	CHECKER	ENG. APP.
B	2	ON B/M ADDED ITEMS #3, #4, #5 PICTORIAL REVISED COMPL.	3.30.64	11145	WB	<i>[Signature]</i>	<i>[Signature]</i>
A	1	STAMPING DET ADDED. IN PICT STAMP NOTE DELETED ON USED ON ASSY WAS A-615. CHART CLARIFIED.	9-25-63	9996	AB	<i>[Signature]</i>	<i>[Signature]</i>

REQ. PER UNIT	MODEL	PROJECT NO.	ASSY. NO.	DATE
1	VOX-5,6			2-26-62
1	VOX-3,4			2-26-62
1	VOX-1-2			6-7-55
1	VOX	101	AX-345	12-2-53