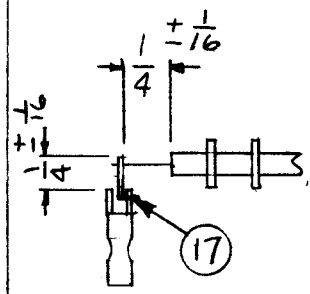


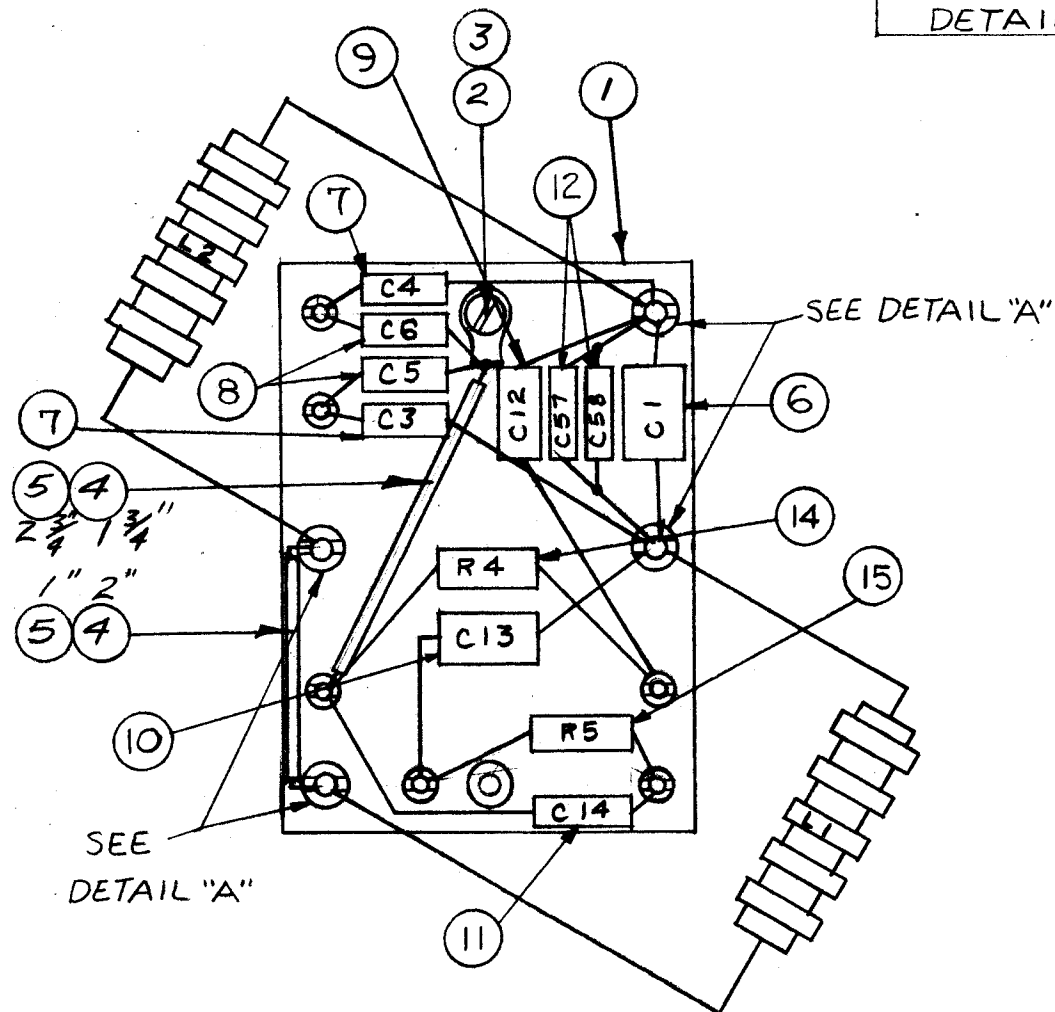
IF IT IS FOUND DESIRABLE TO CHANGE ANY TOLERANCE OR OTHER DETAIL SPECIFIED ON THIS DRAWING NOTIFY THE PURCHASER PROMPTLY.

MAXIMUM ALLOWABLE TOLERANCES HAVE BEEN DETERMINED AND DEVIATIONS WILL BE CAUSE FOR REJECTION. REMOVE ALL BURRS AND SHARP EDGES

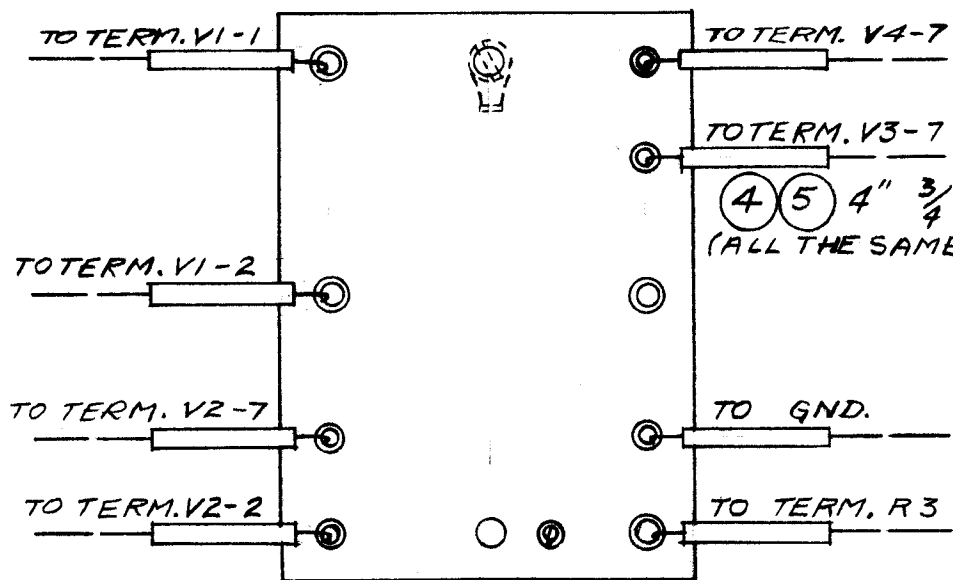


DETAIL "A"

A-620 E



NOTE: ALL LEADS TO BE 4" LONG & THEN CUT TO DESIRED LENGTH. ALL SLEEVING TO BE 3/4" LONG, (YEL.)



ALL LEADS GO TO BOTTOM TERM. BD. OF 200 K.C. OVEN (A-348)

NOTE: 1. USE SLEEVING WHEREVER THERE IS DANGER OF SHORTING. 2. ALL COMPONENTS MUST FIT INSIDE OUTER EDGE OF TERM. BD. 3. FOR SILK SCREENING, SEE LD-132.

REQ.	ITEM	PART NO.	DESCRIPTION	SYMBOL
X	17	WL100-4	WIRE, ELEC, BUSS	
X	16	BS-100	SOLDER, SOFT	
1	15	RR-104-673	RESISTOR, FIXED	R5
1	14	RR-104-582	RESISTOR, FIXED	R4
2	13	CL265(A337)	INDUCTOR, FIXED	L2 L7
2	12	CC26UT111G	CAPACITOR, FIXED	C58 C57
1	11	CM15C270J03	CAPACITOR, FIXED	C14
1	10	CM20F102G03	CAPACITOR, FIXED	C13
1	9	CM20E270G03	CAPACITOR, FIXED	C12
2	8	CM20F681603	CAPACITOR, FIXED	C6 C5
2	7	CC-102-1	CAPACITOR, FIXED	C7 C3
1	6	CC-102-4	CAPACITOR, FIXED	C1
10 1/2"	5	FX-104-2-03A	INSULATION, SLEEVING (SIZE 3A)	YEL.
36"	4	WL-100-7	WIRE, ELEC, BUSS	
1	3	TE-104-2	TERMINAL, LOCKING	
1	2	SCBP0632BN8	SCREW, MACH.	
1	1	LD132/A357	TOP TERM. BD.	

REQ.	ITEM	PART NO.	DESCRIPTION	SYMBOL
//				
STOCK SIZE				
//				
MATERIAL WEIGHT PER PC.				
//				
TYPE & TEMPER				
//				
HEAT TREAT. SPEC.				
//				
FINISH & SPEC. NO.				

THE TECHNICAL MATERIEL CORP.
MAMARONECK. NEW YORK
TOP TERM. BD.
COMPONENT SUB-ASS'Y (200 K.C.)
6 12-9-53
A. J. J. J. W.D.
A. J. J. J. W.D.
A-620 E

E	ADDED IT. 17 & DETAIL "A"	6.7.68	18940	W.S.	M.W.	F.B.	J.H.
ISSUE	ITEM	CHANGED FROM	DATE	CN. NO.	DRAFTS	CHECKER	ENG. APP.
TOLERANCES		SCALE: //					
ALL OTHERS		DRILL, PUNCH, COMMERCIAL STOCK SIZES AND MANUFACTURERS TOLERANCES ARE NOT INCLUDED.					

1	XFK	A-622	12-9-53
AM'T. PER UNIT	MODEL	PROJECT NO.	ASS'Y. NO.
USED ON			