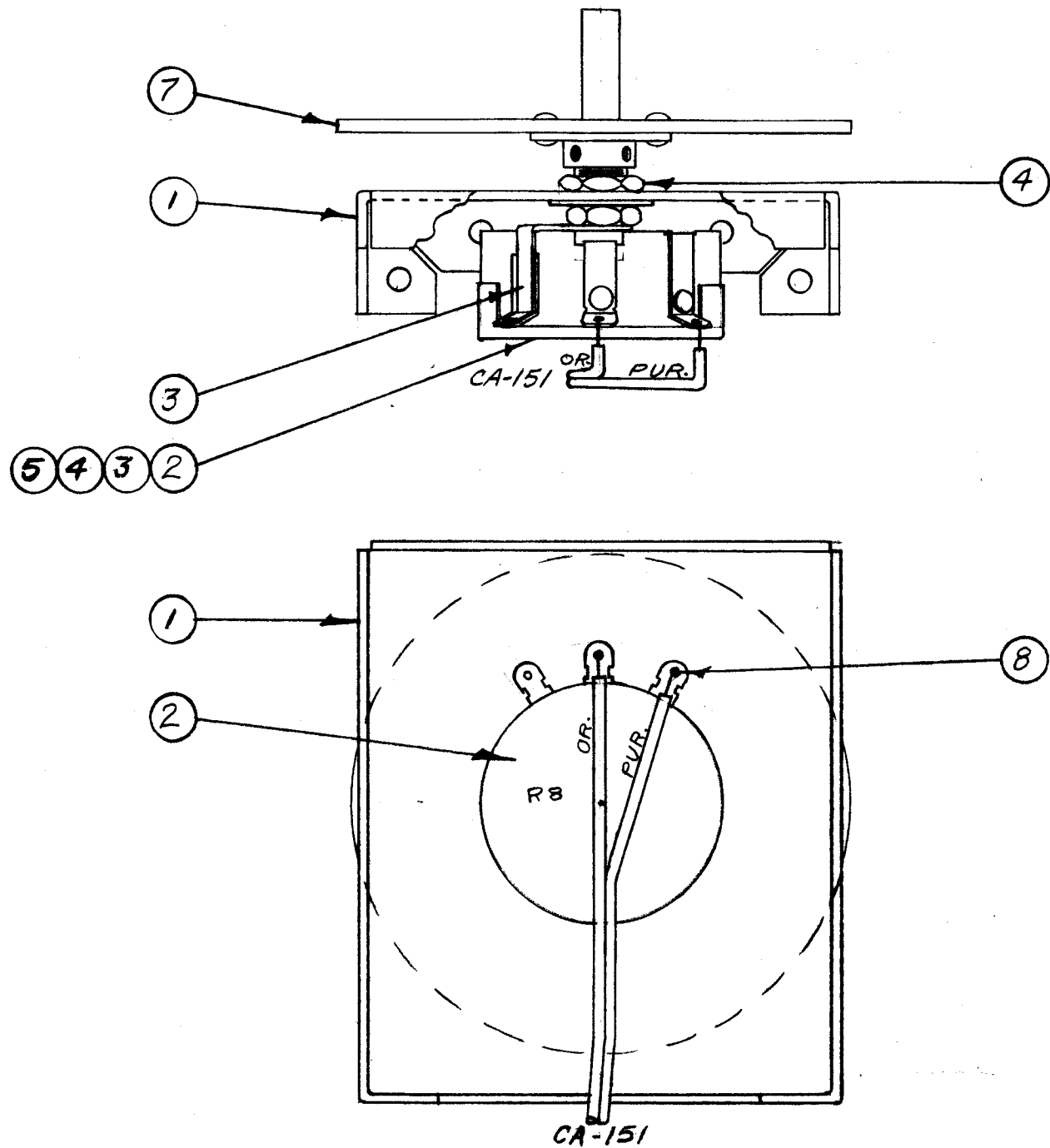


IF IT IS FOUND DESIRABLE TO CHANGE ANY TOLERANCE OR OTHER DETAIL SPECIFIED ON THIS DRAWING NOTIFY THE PURCHASER PROMPTLY.

MAXIMUM ALLOWABLE TOLERANCES HAVE BEEN DETERMINED AND DEVIATIONS WILL BE CAUSE FOR REJECTION. REMOVE ALL BURRS AND SHARP EDGES

A-640 D



X	8	BS-100	SOLDER, SOFT	
1	7	A-3147	DIAL ASSY, FREQ SHIFT	
—	6	—	DELETED	
1	5	LW137MRN	LOCKWASHER, INT.	
2	4	NTH3732BN16	NUT, HEX.	
1	3	TE-111-2	LUG, SOLDER	
1	2	RA100ASRL103A	RESISTOR, VAR., W.W.	R8
1	1	MS-225	MOUNTING BRACKET	
REQ.	ITEM	PART NO.	DESCRIPTION	SYMBOL
//			THE TECHNICAL MATERIEL CORP.	
STOCK SIZE			MAMARONECK. NEW YORK	
//			DIAL, BRACKET, & RES.	
MATERIAL			SUB-ASSY. - XFK	
//			G AJJ WOE	
TYPE & TEMPER			DRAWN ELEC. DES. APP. MECH. DES. APP.	
//			A.J.B. A.J.T.	
HEAT TREAT. SPEC.			CHECKED FINAL APPROVAL	
//			A-640 D	
FINISH & SPEC. NO.				

D	IT WAS LW137MRN IT WAS NTH3732BN16	11-11-66	17223	R.M.E.	JCB	W	
ISSUE	ITEM	CHANGED FROM	DATE	CN. NO.	DRAFTS	CHECKER	ENG. APP.
TOLERANCES		SCALE: //					
ALL OTHERS	DEC. DIM. ± FRAC. DIM. ± ANGULAR DIM. ±	DRILL, PUNCH, COMMERCIAL STOCK SIZES AND MANUFACTURERS TOLERANCES ARE NOT INCLUDED.					
1	XFK	A-684 (Pg. 1 of 3)	1-7-54				
AMT. PER UNIT	MODEL	PROJECT NO.	ASS'Y. NO.	DATE			
USED ON							