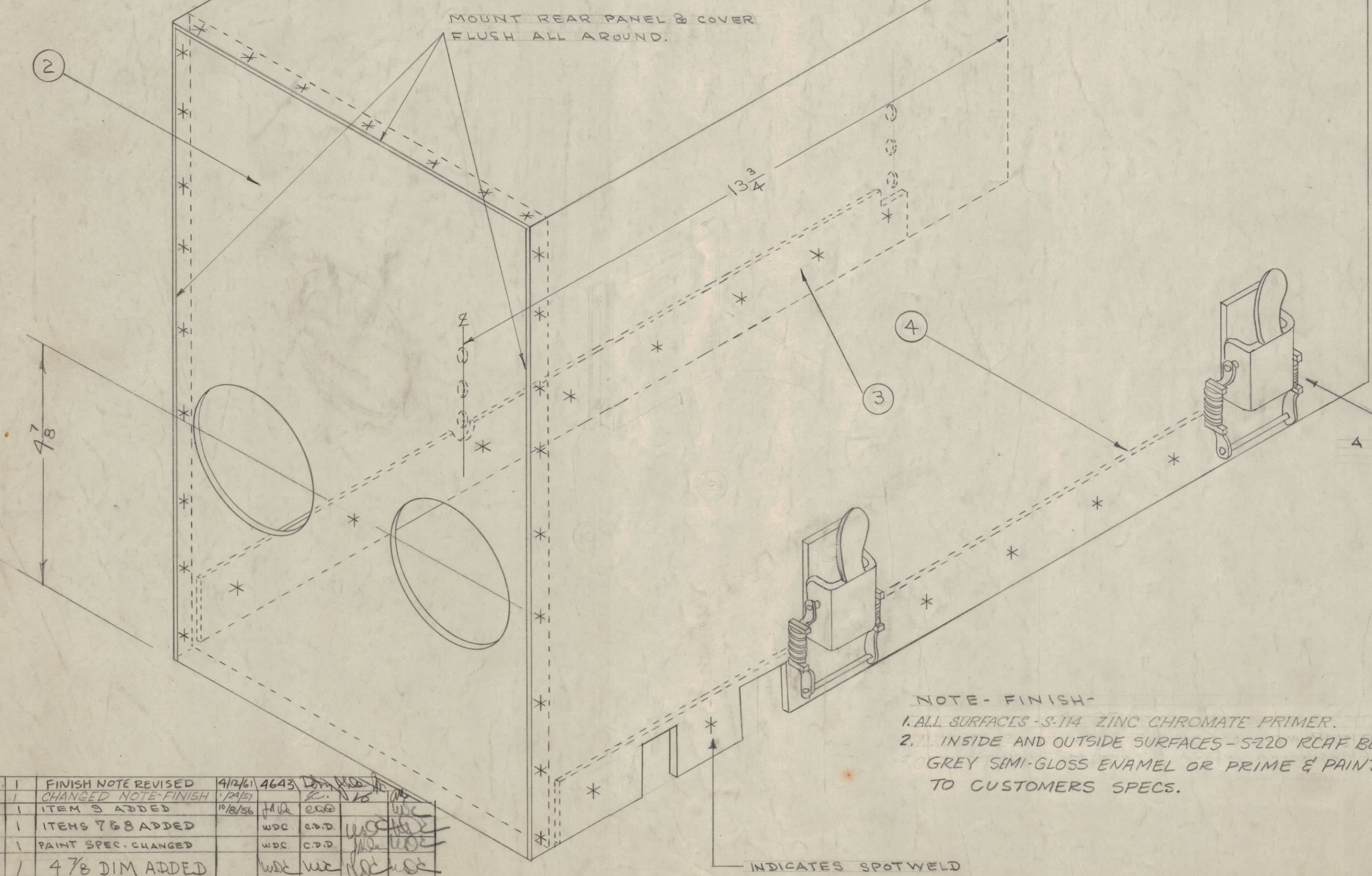
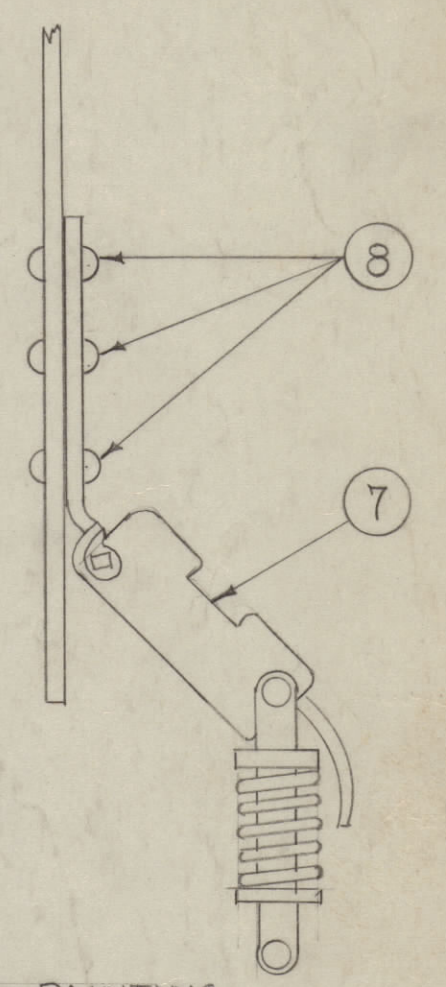
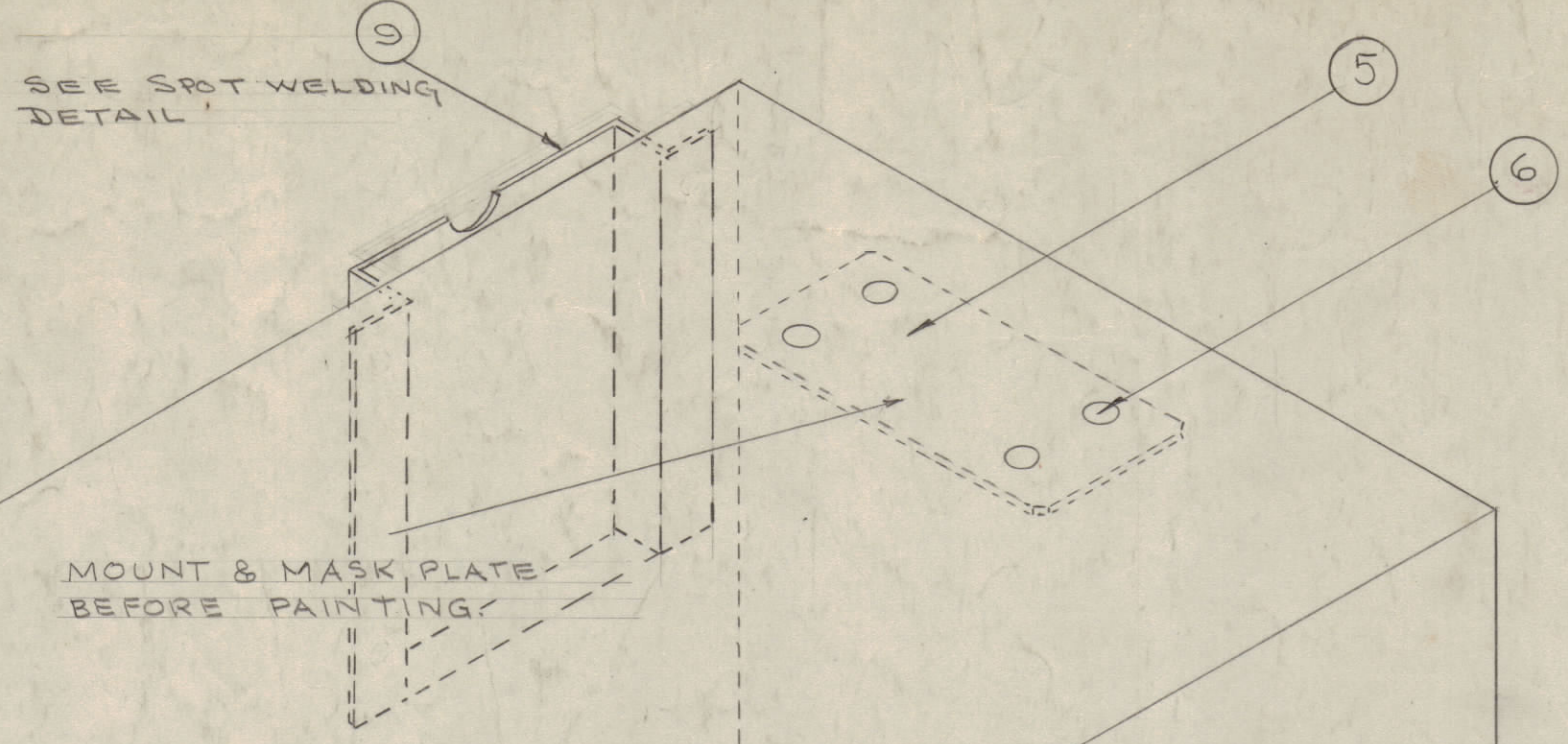
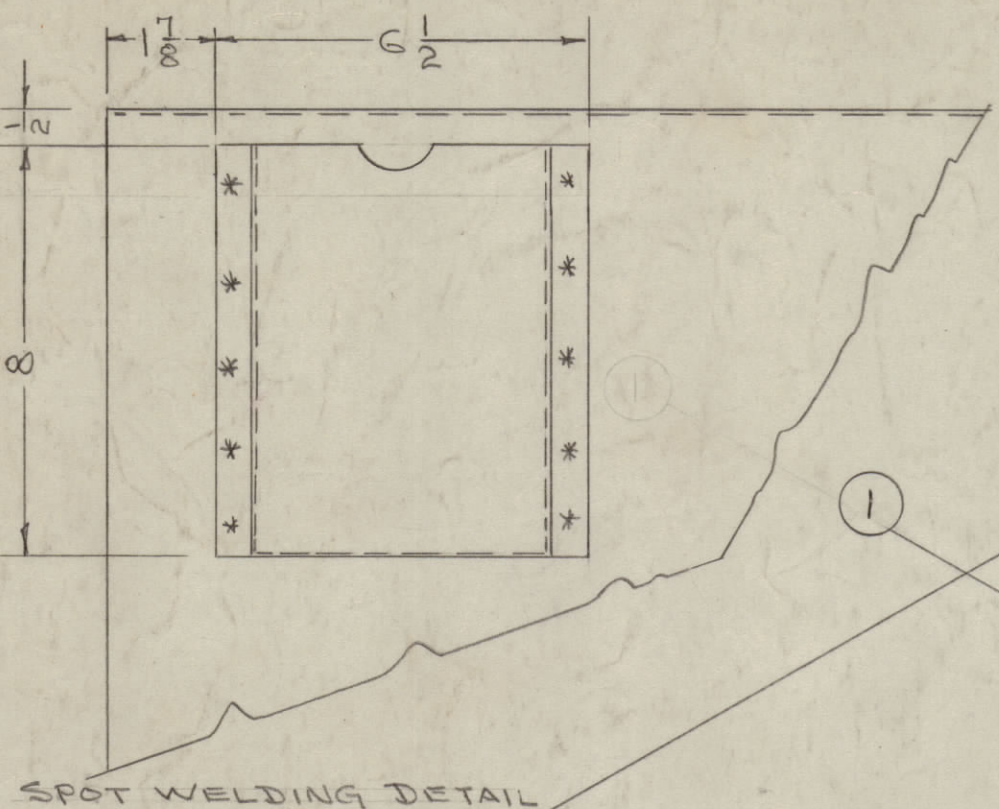


IF IT IS FOUND DESIRABLE TO CHANGE ANY TOLERANCE OR OTHER DETAIL SPECIFIED ON THIS DRAWING NOTIFY THE PURCHASER PROMPTLY.

MAXIMUM ALLOWABLE TOLERANCES HAVE BEEN DETERMINED AND DEVIATIONS WILL BE CAUSE FOR REJECTION. REMOVE ALL BURRS AND SHARP EDGES



NOTE: ALL SPOTWELDS TO BE GROUND SMOOTH BEFORE PAINTING

4 PER UNIT - 2 EACH SIDE

NOTE - FINISH -
 1. ALL SURFACES - S-114 ZINC CHROMATE PRIMER.
 2. INSIDE AND OUTSIDE SURFACES - S-220 RCAF BLUE GREY SEMI-GLOSS ENAMEL OR PRIME & PAINT TO CUSTOMERS SPECS.

A-644 F

F	1	FINISH NOTE REVISED	4/24/61	4643	WDC	WDC	WDC
E	1	CHANGED NOTE-FINISH	1/24/59		WDC	WDC	WDC
D	1	ITEM 9 ADDED	10/8/56		WDC	WDC	WDC
C	1	ITEMS 7 & 8 ADDED			WDC	WDC	WDC
B	1	PAINT SPEC. CHANGED			WDC	WDC	WDC
A	1	4 7/8 DIM ADDED			WDC	WDC	WDC

ISSUE	ITEM	CHANGED FROM	DATE	CN. NO.	DRAFTS	CHECKER	ENG. APP.
TOLERANCES		SCALE:					
ALL OTHERS	DEC. DIM. ±	DRILL, PUNCH, COMMERCIAL STOCK SIZES AND MANUFACTURERS TOLERANCES ARE NOT INCLUDED.					
	FRAC. DIM. ±						
	ANGULAR DIM. ±						

1	TAC-1	132	A-579	1-29-54
REQ. PER UNIT	MODEL	PROJECT NO.	ASS'Y. NO.	DATE

1	9	MS-9911	CARD, HOLDER	
12	8	AN435-628	RIVET, STEEL, ROUND HEAD	
4	7	PO-126	LATCH	
4	6	AN435-424	RIVET, STEEL, ROUND HEAD	
1	5	MS-AA3	GROUND PLATE	
1	4	MS-A50	LEFT SUPPORT	
1	3	MS-A51	RIGHT SUPPORT	
1	2	MS-AA8	REAR PANEL	
1	1	MS-AA7	COVER	
REQ. ITEM		PART NO.	DESCRIPTION	SYMBOL
STOCK SIZE			THE TECHNICAL MATERIEL CORP.	
			MAMARONECK, NEW YORK	
			COVER SUB ASSY.	
			TAC-1	
MATERIAL		WEIGHT PER PC.		
TYPE & TEMPER		CDD 1/6/54		
		DRAWN		
		ELEC. DES. APP.		
		MECH. DES. APP.		
HEAT TREAT. SPEC.		CHECKED		
		FINAL APPROVAL		
SEE NOTE		A-644 F		
FINISH & SPEC. NO.				