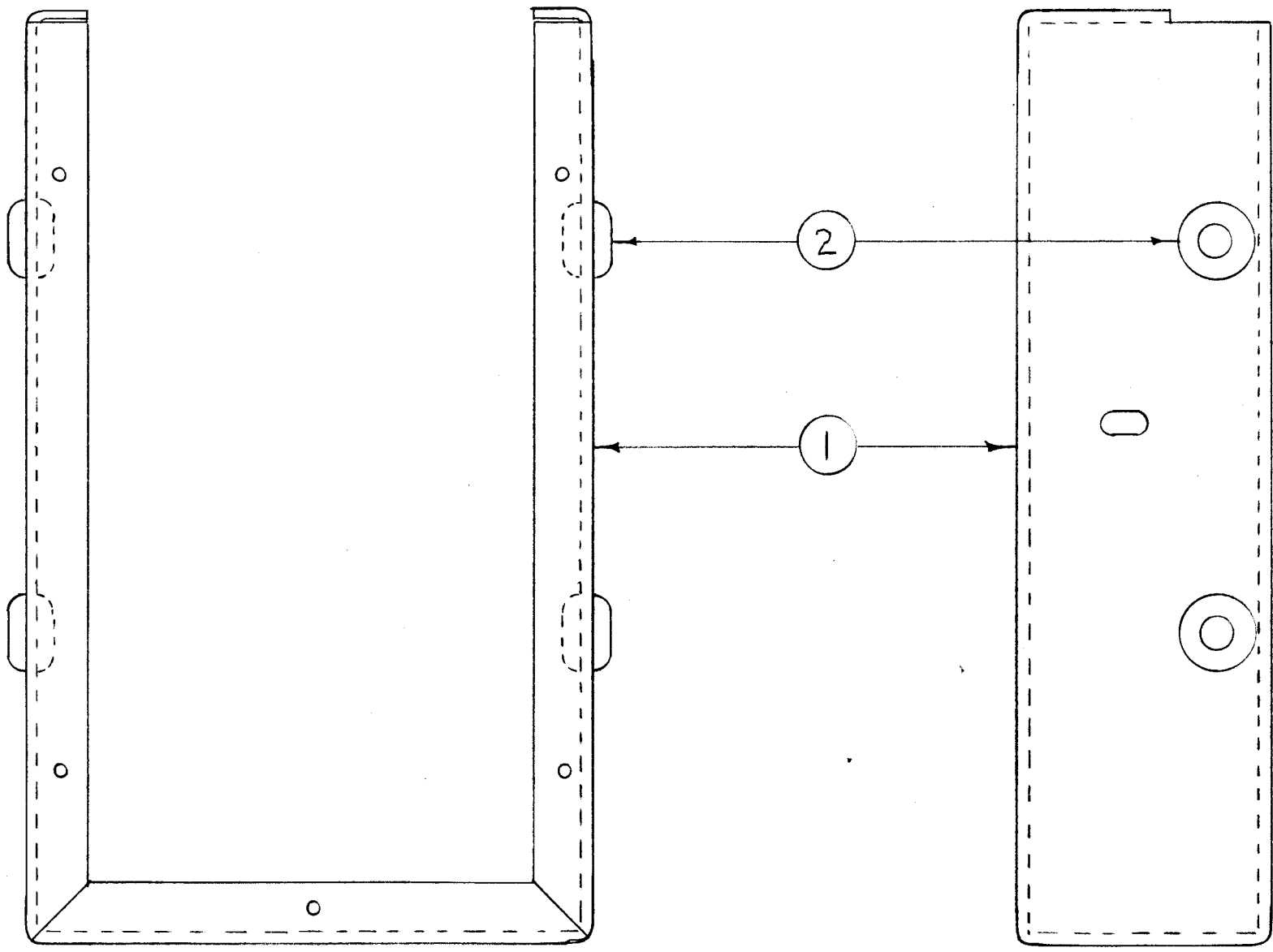


IF IT IS FOUND DESIRABLE TO CHANGE ANY TOLERANCE OR OTHER DETAIL SPECIFIED ON THIS DRAWING NOTIFY THE PURCHASER PROMPTLY.

MAXIMUM ALLOWABLE TOLERANCES HAVE BEEN DETERMINED AND DEVIATIONS WILL BE CAUSE FOR REJECTION. REMOVE ALL BURRS AND SHARP EDGES

A-657



4	2	EY-102-3	GROMMET, ELASTIC	
1	1	MS-239	SHIELD, BOTTOM	
REQ.	ITEM	PART NO.	DESCRIPTION	SYMBOL
//			THE TECHNICAL MATERIEL CORP. MAMARONECK. NEW YORK	
STOCK SIZE				
//		+	BOTTOM SHIELD ASSY	
MATERIAL		WEIGHT PER PC.	DCU-1	
//			C.D.D. 1-27-54	
TYPE & TEMPER			DRAWN	ELEC. DES. APP.
//			MECH. DES. APP.	
HEAT TREAT. SPEC.			CHECKED	FINAL APPROVAL
//			A-657	
FINISH & SPEC. NO.				

ISSUE	ITEM	CHANGED FROM	DATE	CN. NO.	DRAFTS	CHECKER	ENG. APP.
TOLERANCES		SCALE: //					
ALL OTHERS	DEC. DIM. ± FRAC. DIM. ± ANGULAR DIM. ±	DRILL, PUNCH, COMMERCIAL STOCK SIZES AND MANUFACTURERS TOLERANCES ARE NOT INCLUDED.					

1	DCU-1	268		
REQS PER UNIT	MODEL	PROJECT NO.	ASS'Y. NO.	DATE

USED ON