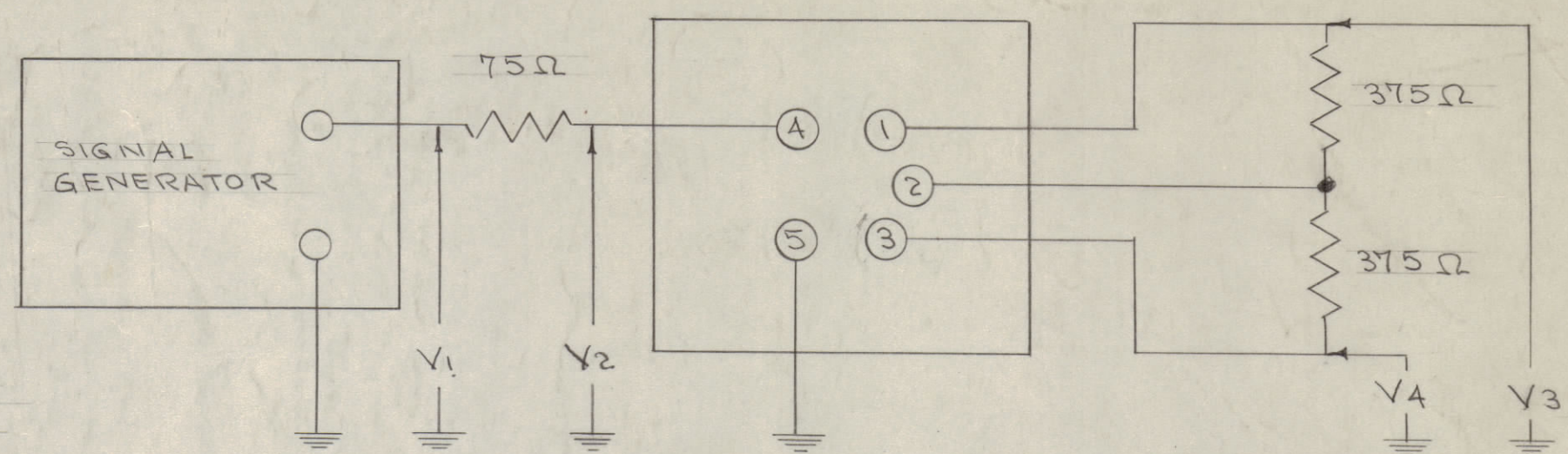
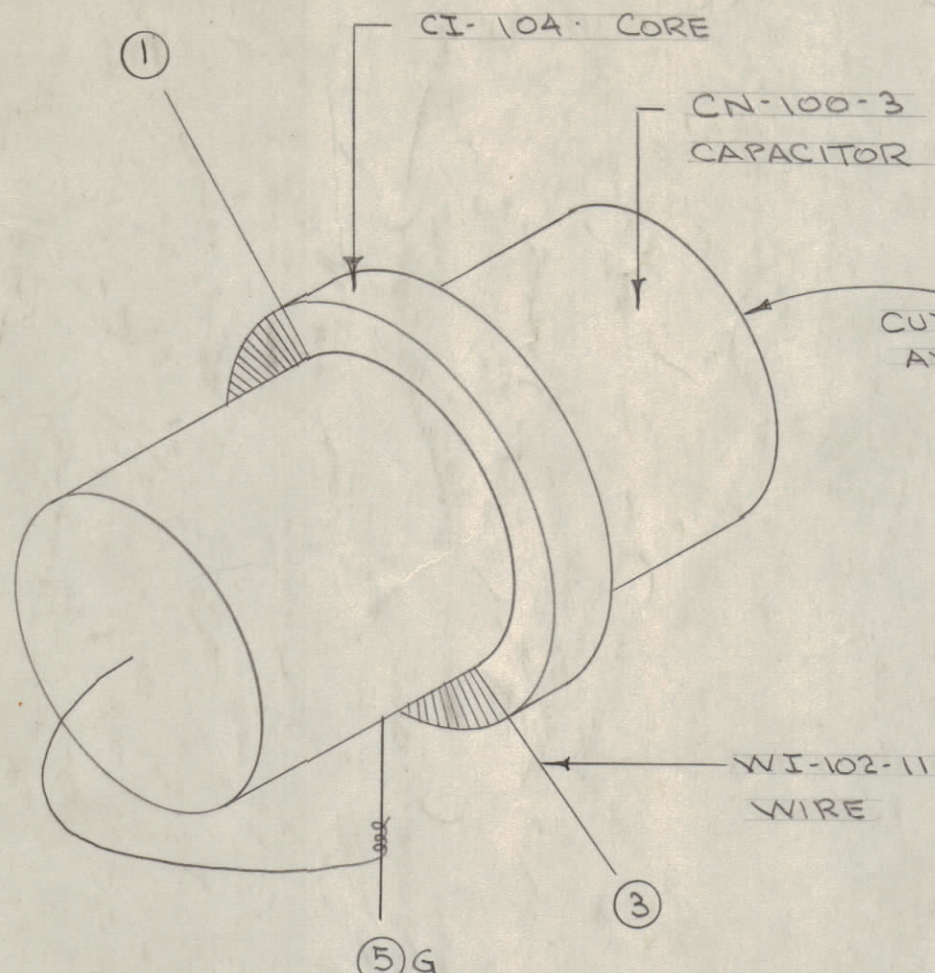
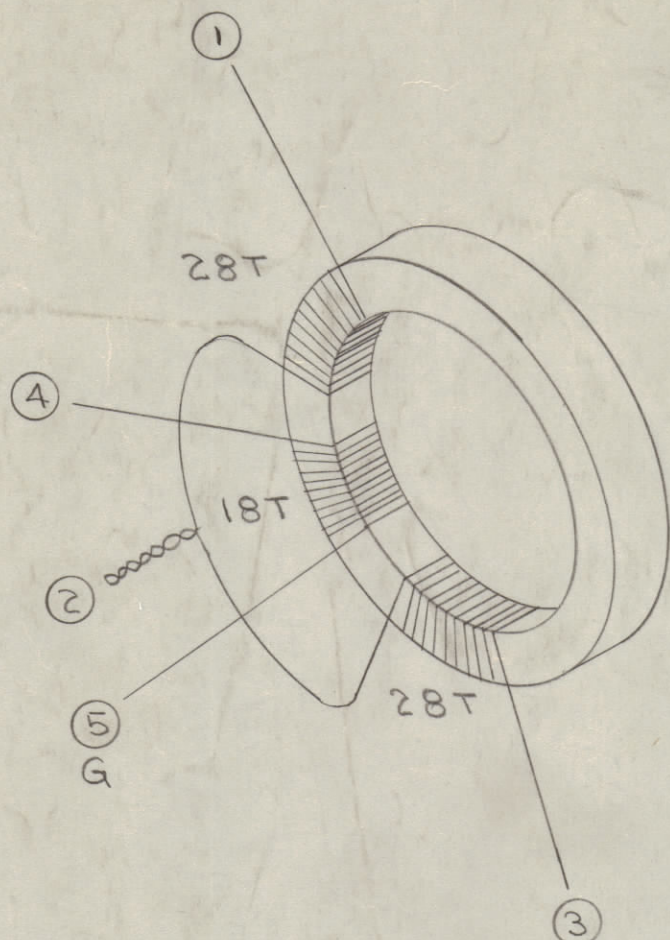


IF IT IS FOUND DESIRABLE TO CHANGE ANY TOLERANCE OR OTHER DETAIL SPECIFIED ON THIS DRAWING NOTIFY THE PURCHASER PROMPTLY.

MAXIMUM ALLOWABLE TOLERANCES HAVE BEEN DETERMINED AND DEVIATIONS WILL BE CAUSE FOR REJECTION. REMOVE ALL BURRS AND SHARP EDGES

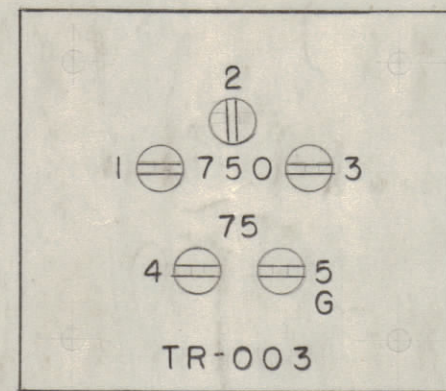
TEST PROCEDURE



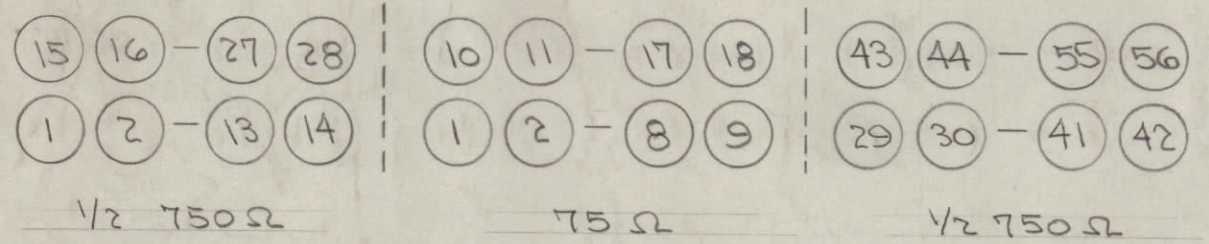
RF VOLTS TYPICAL				
freq	V ₁	V ₂	V ₃	V ₄
100 Kc.	1.0	.50	.70	.72
400 Kc.	1.0	.53	.71	.72
1600 Kc.	1.0	.70	.62	.60

FREQUENCY RESPONSE RATIO OF HIGHEST TO LOWEST VOLTAGE LESS THAN 1.4

VOLTAGE TOLERANCE ± 10%



METAL STAMP BEFORE PAINTING, 1/8 BLACK STAMP AFTER "



NOT TO BE RELEASED W/O AUTHORIZATION

AUTH. BY: _____

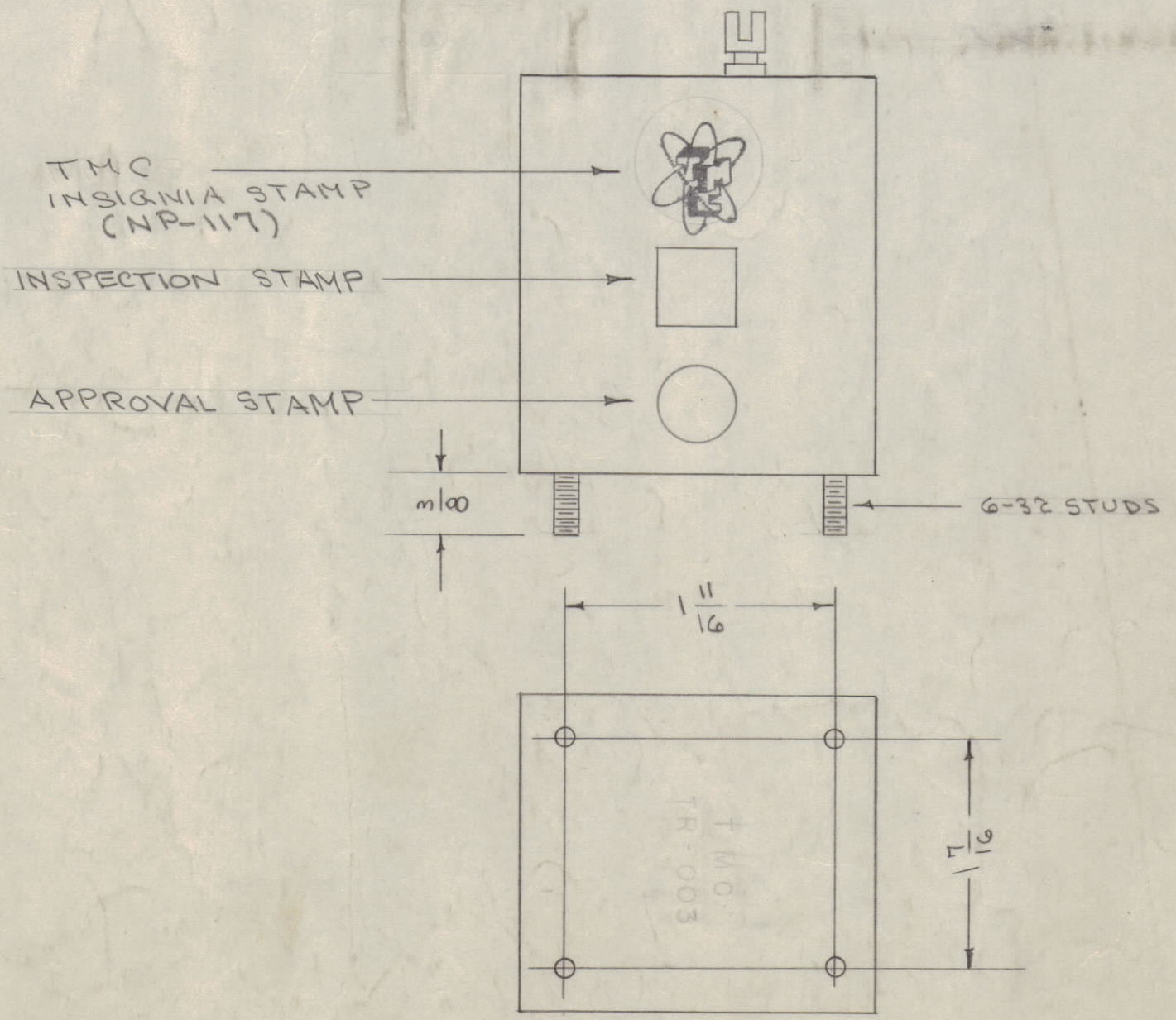
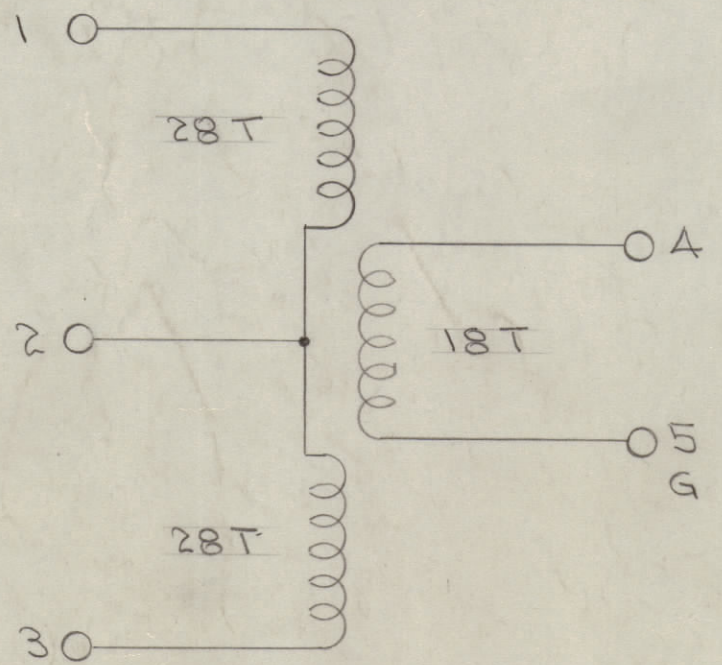
DATE: _____

A-658 G

NOTE: FINISH

S-114 ZINC CHROMATE PRIMER

S-115 SMOOTH GREY ENAMEL



REQ.	ITEM	PART NO.	DESCRIPTION	SYMBOL
1	7	NP-117	TMC INSIGNIA	
X	6	GL-106	POTTING COMPOUND	
X	5	BS-100	SOLDER, SOFT	
1	4	CI-104	CORE	
1	3	CN-100-3	CAPACITOR, FIXED	
X	2	WI-102-11	WIRE	
1	1	BX-119-1	CASE, TRANSFORMER	

ISSUE	ITEM	CHANGED FROM	DATE	CN. NO.	DRAFTS	CHECKER	ENG. APP.
G		ON 100KC V ₂ WAS 4.8, V ₃ WAS 6.6 & V ₄ WAS 7.0	11/4/66	17183	RME	[Signature]	[Signature]
F	1	VOLT CHART TOLERANCE WAS ± 0.05	6-23-66	16446	[Signature]	[Signature]	[Signature]
E	1	RF VOLT CHART REVISED	1/22/62	6255	G.S.	[Signature]	[Signature]
D	1	ITEM 6 WAS GL-100	5/11/62	4	[Signature]	[Signature]	[Signature]
C	1	ITEM 9 WAS NP-139	5/11/61	3	[Signature]	[Signature]	[Signature]
B	1	S-101 DELETED	11/19/54	2	[Signature]	[Signature]	[Signature]
A	1	REVISED & REDRAWN	5/4/54	1	C.D.D.	[Signature]	[Signature]

TOLERANCES: DEC. DIM. ±, FRAC. DIM. ±, ANGULAR DIM. ±

SCALE: DRILL, PUNCH, COMMERCIAL STOCK SIZES AND MANUFACTURERS TOLERANCES ARE NOT INCLUDED.

REQ. PER UNIT	MODEL	PROJECT NO.	ASS'Y. NO.	DATE

THE TECHNICAL MATERIEL CORP.		
MAMARONECK, NEW YORK		
TRANSFORMER		
TR-003		
TYPE & TEMPER	ADD 5-3-54	
DRAWN	ELEC. DES. APP.	MECH. DES. APP.
CHECKED		
HEAT TREAT. SPEC.		
SEE NOTE		
FINISH & SPEC. NO.		

A-658 G