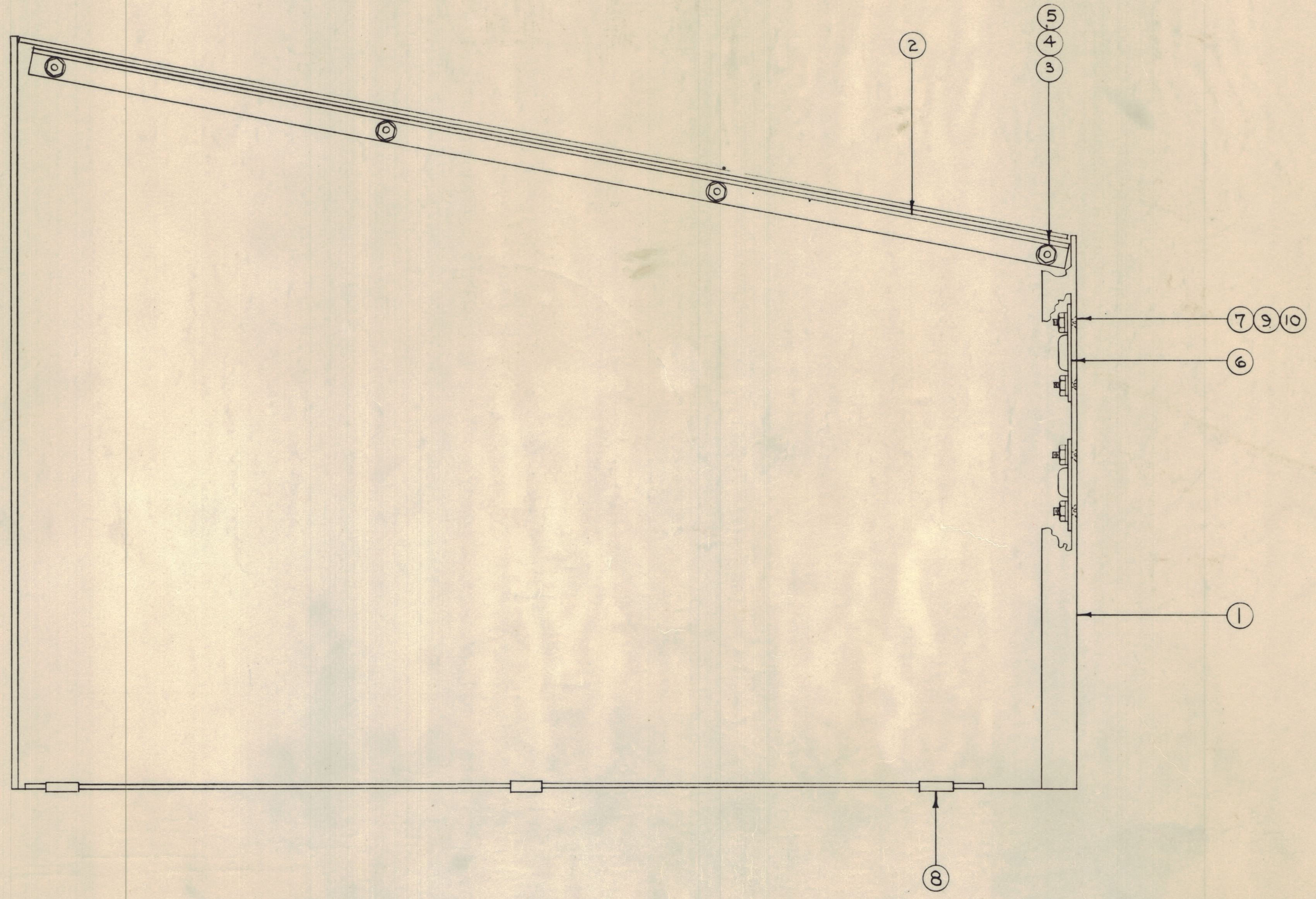


IF IT IS FOUND DESIRABLE TO CHANGE ANY TOLERANCE OR OTHER DETAIL SPECIFIED ON THIS DRAWING NOTIFY THE PURCHASER PROMPTLY.  
 MAXIMUM ALLOWABLE TOLERANCES HAVE BEEN DETERMINED AND DEVIATIONS WILL BE CAUSE FOR REJECTION. REMOVE ALL BURRS AND SHARP EDGES



A-681  
B

**NOTICE TO PERSONS RECEIVING THIS DRAWING**

THE TECHNICAL MATERIEL CORPORATION claims proprietary right in the material disclosed hereon. This drawing is issued in confidence for engineering information only and may not be reproduced or used to manufacture anything shown hereon without permission from THE TECHNICAL MATERIEL CORPORATION to the user. This drawing is loaned for mutual assistance and is subject to recall at any time.

Property of:  
 THE TECHNICAL MATERIEL CORPORATION  
 MAMARONECK, NEW YORK

REQ. ITEM	PART NO.	DESCRIPTION	SYMBOL
4	10	NTH0348B8G	NUT, HEX
4	9	LWS03HRN	WASHER, LOCK
3	8	NT-108-1	NUT, SPEED
4	7	SCFP0348B8A	SCREW, MACHINE
2	6	FS-100	SPRING, UNIT
4	5	NTH0440B8B	NUT, HEX
4	4	LWE04HRN	WASHER, LOCK
4	3	SCBP0440B8A	SCREW, MACHINE
1	2	MS-212	COVER TRACK
1	1	MS-201-2	SIDE PLATE, LEFT

STOCK SIZE		THE TECHNICAL MATERIEL CORP. MAMARONECK, NEW YORK	
MATERIAL		LEFT SIDE ASSY	
WEIGHT PER PC.		XFK	
TYPE & TEMPER		CDD-2-B-54	
HEAT TREAT. SPEC.		DRAWN: <i>[Signature]</i> ELEC. DES. APP. <i>[Signature]</i> MECH. DES. APP. <i>[Signature]</i>	
FINISH & SPEC. NO.		CHECKED: <i>[Signature]</i> FINAL APPROVAL: <i>[Signature]</i>	

1	XFK	PROJECT NO.	A-367	DATE	2-8-54
REQ. PER UNIT	MODEL	ASSY. NO.	USED ON		

B	CHG'D TO "N" IT 450X10 IT 2 WAS SCF0348B8C IT 3 WAS SCB0348B8C	H-116	17223	RM E	<i>[Signature]</i>	
A	ITEM 4 WAS LWS03HRN	12-1-54	1	PO	<i>[Signature]</i>	
ISSUE ITEM	CHANGED FROM	DATE	CN. NO.	DRAFTS	CHECKER	ENG. APP.
TOLERANCES						
ALL DEC. DIM. ±			DRILL, PUNCH, COMMERCIAL STOCK			
OTHERS FRACTIONAL DIM. ±			SIZES AND MANUFACTURERS			
ANGULAR DIM. ±			TOLERANCES ARE NOT INCLUDED.			