

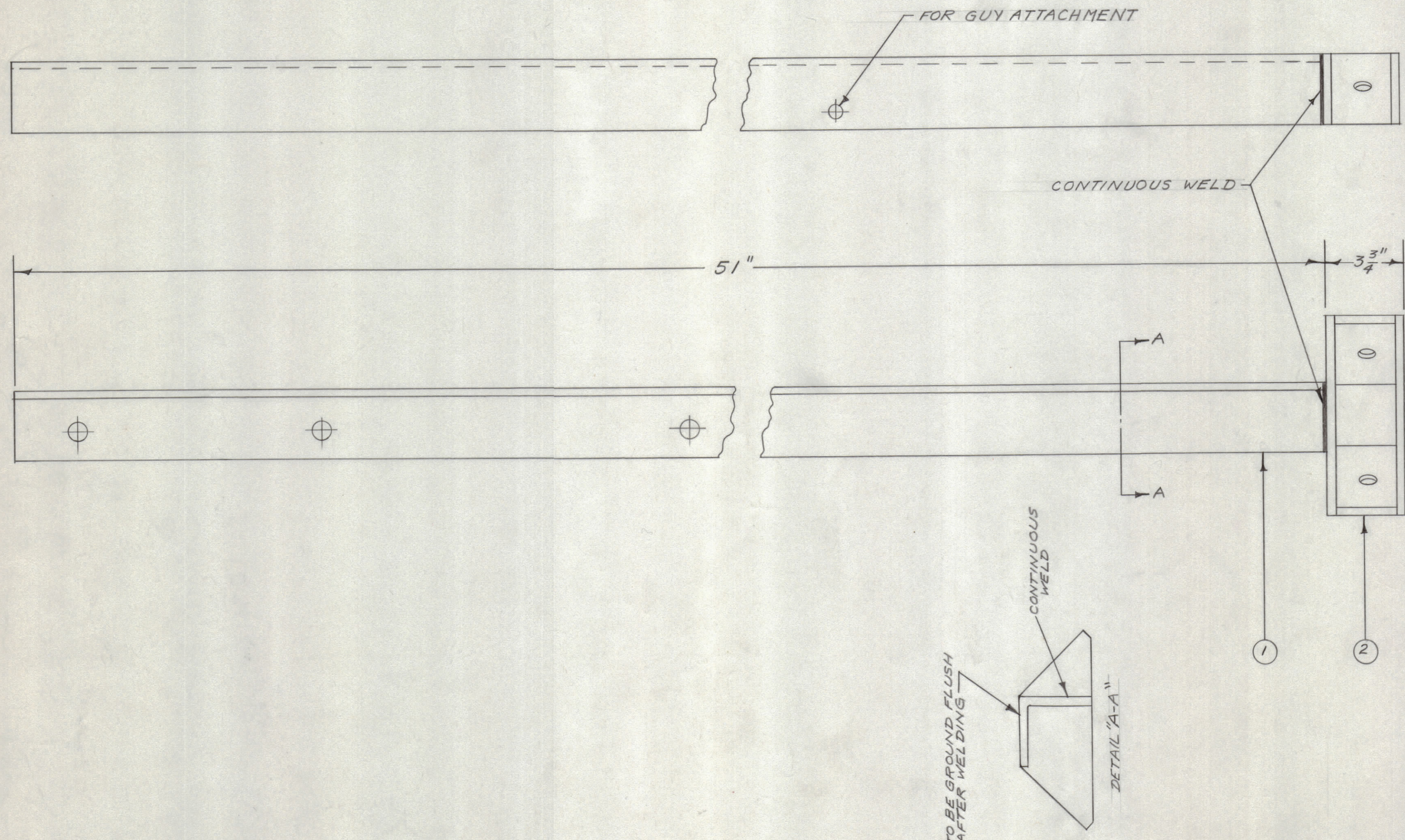
IF IT IS FOUND DESIRABLE TO CHANGE ANY TOLERANCE OR OTHER DETAIL SPECIFIED ON THIS DRAWING NOTIFY THE PURCHASER PROMPTLY.

MAXIMUM ALLOWABLE TOLERANCES HAVE BEEN DETERMINED AND DEVIATIONS WILL BE CAUSE FOR REJECTION. REMOVE ALL BURRS AND SHARP EDGES

NOTICE TO PERSONS RECEIVING THIS DRAWING

THE TECHNICAL MATERIEL CORPORATION claims proprietary right in the material disclosed herein. This drawing is issued in confidence for engineering information only and may not be reproduced or used to manufacture anything shown hereon without permission from THE TECHNICAL MATERIEL CORPORATION to the user. This drawing is loaned for mutual assistance and is subject to recall at any time.

Property of:
THE TECHNICAL MATERIEL CORPORATION
MAMARONECK, NEW YORK



A-693

1	2	A-691	GUSSET ASS'Y.	
1	1	MS-508	ANGLE IRON (51")	
REQ. ITEM	PART NO.		DESCRIPTION	SYMBOL
—//—			STOCK SIZE	
—//—			MATERIAL	
—//—			WEIGHT PER PC.	
—//—			TYPE & TEMPER	
—//—			HEAT TREAT. SPEC.	
—//—			FINISH & SPEC. NO.	
			THE TECHNICAL MATERIEL CORP. MAMARONECK, NEW YORK	
			ANGLE IRON ASS'Y (51") (SPLICE ASS'Y.)	
			DRAWN	ELEC. DES. APP.
			CHECKED	FINAL APPROVAL
			REF.: GC-70178	A-693

ISSUE	ITEM	CHANGED FROM	DATE	CN. NO.	DRAFTS	CHECKER	ENG. APP.
TOLERANCES		SCALE: 1/4 SIZE					
ALL OTHERS	DEC. DIM. ± FRAC. DIM. ± ANGULAR DIM. ±	DRILL, PUNCH, COMMERCIAL STOCK SIZES AND MANUFACTURERS TOLERANCES ARE NOT INCLUDED.					

2	287	A-694	2-26-54
AMT PER UNIT	MODEL	PROJECT NO.	DATE
USED ON			