

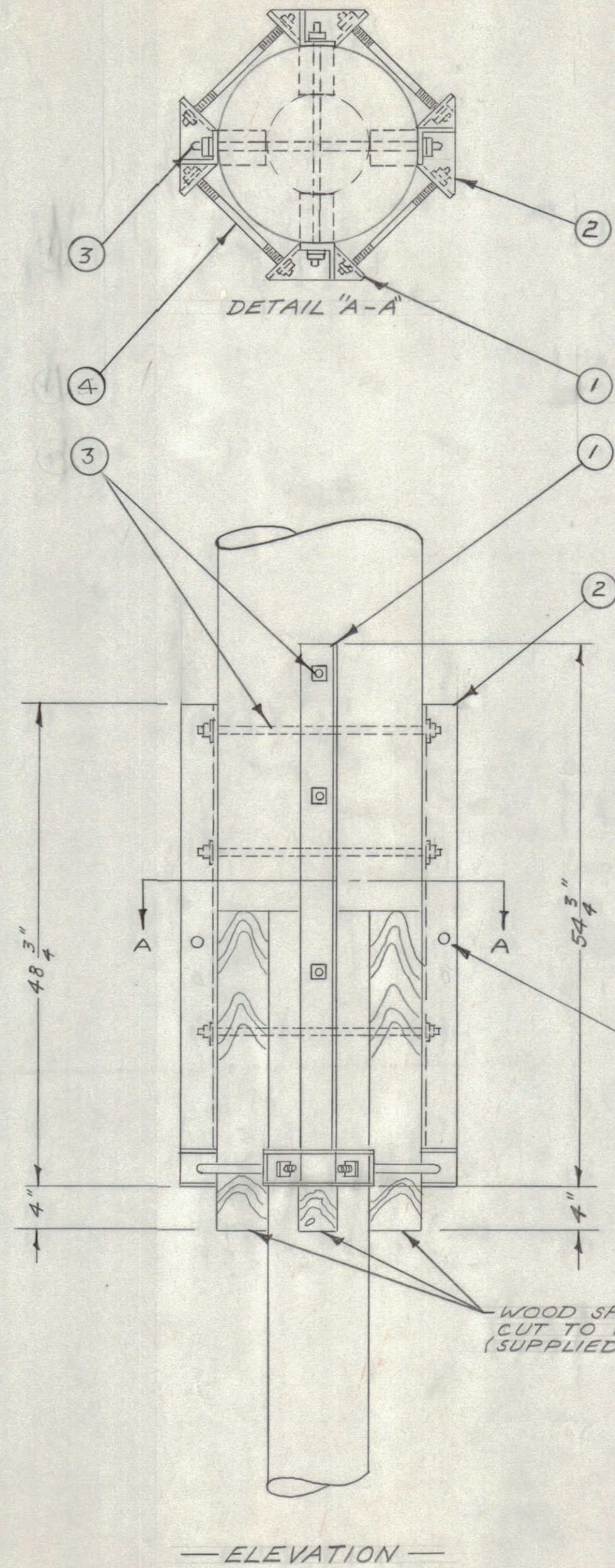
IF IT IS FOUND DESIRABLE TO CHANGE ANY TOLERANCE OR OTHER DETAIL SPECIFIED ON THIS DRAWING NOTIFY THE PURCHASER PROMPTLY.

MAXIMUM ALLOWABLE TOLERANCES HAVE BEEN DETERMINED AND DEVIATIONS WILL BE CAUSE FOR REJECTION. REMOVE ALL BURRS AND SHARP EDGES

NOTICE TO PERSONS RECEIVING THIS DRAWING

THE TECHNICAL MATERIEL CORPORATION claims proprietary right in the material disclosed hereon. This drawing is issued in confidence for engineering information only and may not be reproduced or used to manufacture anything shown hereon without permission from THE TECHNICAL MATERIEL CORPORATION to the user. This drawing is loaned for mutual assistance and is subject to recall at any time.

Property of:
THE TECHNICAL MATERIEL CORPORATION
MAMARONECK, NEW YORK



NOTES: -

1. FOUR ANGLE IRONS PER SPLICE. TWO 45" LONG & TWO 51" LONG, EACH WELDED TO GUSSET ASS'Y.
2. HOT DIP GALVANIZE AFTER FABRICATION.
3. POLE CLASS & LENGTHS TO BE SPLICED GIVEN IN CONSTRUCTION SPECS. FOR EACH STATION.
4. LOAD BEARING SURFACES ON BUTT OF TOP POLE & TOP OF BOTTOM POLE TO BE CUT PERPENDICULAR TO THE MEAN LONGITUDINUL AXIS OF THE TWO POLES.
5. MAKE 4 SLAB GAINS ON BUTT OF TOP POLE FOR ANGLE IRONS TO BEAR AGAINST. GAINS TO BE AT LEAST 2 1/2" WIDE & SPACED 90° APART. DEPTH OF GAINS MAY VARY TO COMPENSATE FOR CROOKS IN BUTT.
6. CYLINDRICAL SURFACE IRREGULARITIES ON TOP OF BOTTOM POLE SHOULD BE COMPENSATED FOR BY CAREFUL FITTING OF THE WOOD SPACERS. DO NOT GAIN POLE TOP.
7. DRILL 1/8" HOLES FOR DRIVE FITS.

A-694

4	4	SC-119	STUD BOLT 16"	
6	3	SC-118	STUD BOLT 24"	
2	2	A-692	ANGLE IRON ASS'Y. 45"	
2	1	A-693	ANGLE IRON ASS'Y. 51"	
REQ. ITEM		PART NO.	DESCRIPTION	SYMBOL
		//		
		STOCK SIZE		
		//		
		MATERIAL WEIGHT PER PC.		
		//		
		TYPE & TEMPER		
		//		
		HEAT TREAT. SPEC.		
		//		
		FINISH & SPEC. NO.		
		//		
THE TECHNICAL MATERIEL CORP. MAMARONECK, NEW YORK				
ANTENNA POLE SPLICE ASS'Y.				
		DRAWN		MECH. DES. APP.
		ELEC. DES. APP.		
		CHECKED		FINAL APPROVAL
		REF:		
		GC-70178		A-694

ISSUE	ITEM	CHANGED FROM	DATE	CN. NO.	DRAFTS	CHECKER	ENG. APP.
TOLERANCES							
SCALE: //							
ALL OTHERS		DEC. DIM. ± FRAC. DIM. ± ANGULAR DIM. ±		DRILL, PUNCH, COMMERCIAL STOCK SIZES AND MANUFACTURERS TOLERANCES ARE NOT INCLUDED.			

MODEL	287	ASS'Y. NO.	2-26-54
USED ON			