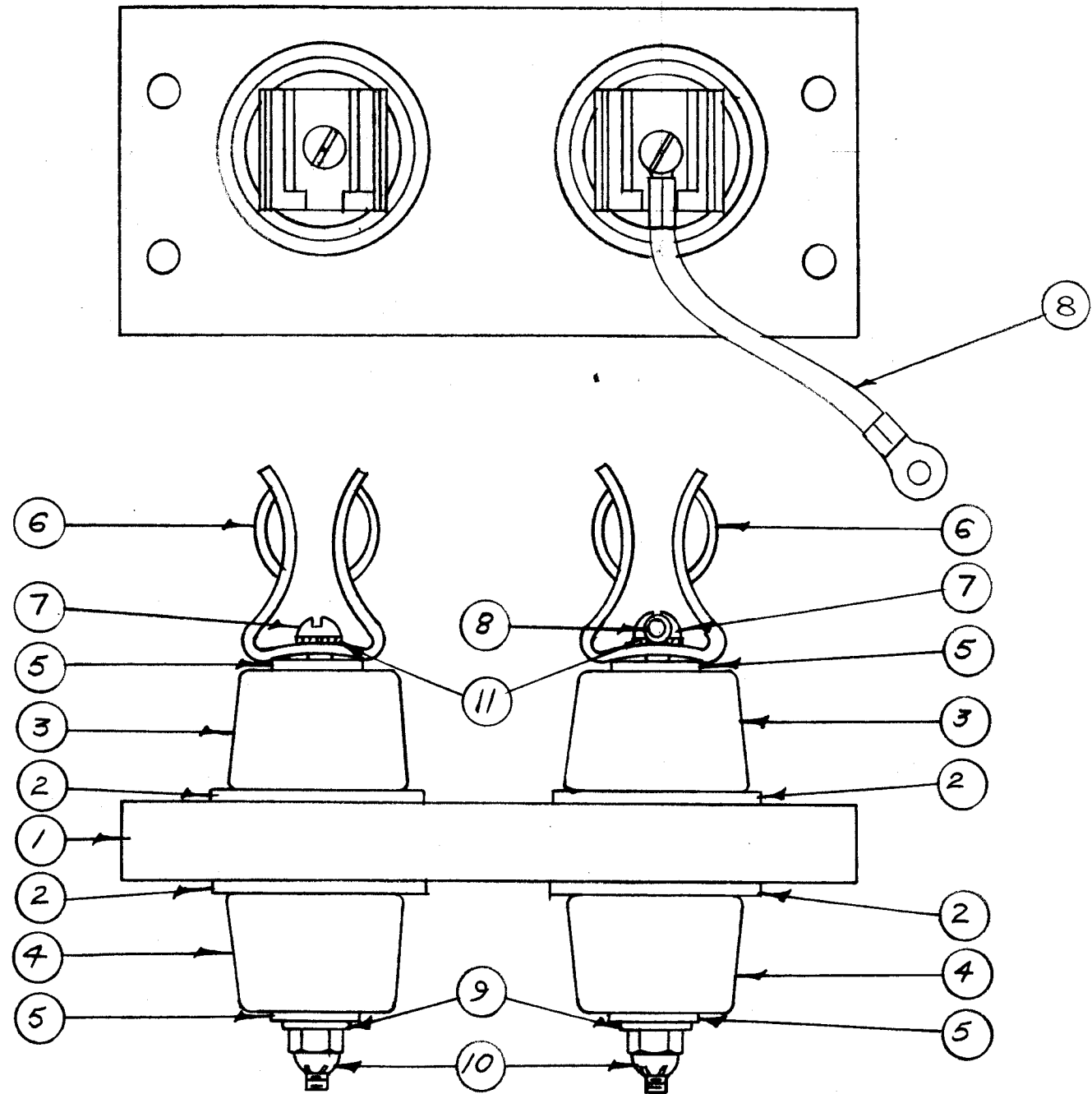


IF IT IS FOUND DESIRABLE TO CHANGE ANY TOLERANCE OR OTHER DETAIL SPECIFIED ON THIS DRAWING NOTIFY THE PURCHASER PROMPTLY.

MAXIMUM ALLOWABLE TOLERANCES HAVE BEEN DETERMINED AND DEVIATIONS WILL BE CAUSE FOR REJECTION. REMOVE ALL BURRS AND SHARP EDGES

A-701 A



2	11	LWE10MRC	WASHER, LOCK	
2	10	SM-127-D-10-32	NUT, HEX.	
2	9	FW10HRC	WASHER, FLAT	
1	8	A-731	STRAP, FUSE HOLDER	
2	7	SCRS1032BC44	SCREW, MACH.	
2	6	FH-102	CLIP, FUSE	
4	5	WA-106-5	WASHER, FIBRE	
2	4	NS-108-1	INSULATOR, STEATITE	
2	3	NS-108-2	INSULATOR, STEATITE	
4	2	GA-117	GASKET	
1	1	PX-191	BRACER MOUNT	

REQ.	ITEM	PART NO.	DESCRIPTION	SYMBOL
		ff	THE TECHNICAL MATERIEL CORP.	
		STOCK SIZE	MAMARONECK. NEW YORK	
		ff	CONDENSOR MOUNT,	
		MATERIAL	(RIGHT SIDE - TAC-1)	
		ff	612-21-53	
		TYPE & TEMPER	AMB	
		ff	DRAWN	
		HEAT TREAT. SPEC.	ELEC. DES. APP.	
		ff	MECH. DES. APP.	
		FINISH & SPEC. NO.	CHECKED	
			FINAL APPROVAL	

A	2	ITEM 11 ADDED	11/23/54	1	P.B.	AMB	WDE
	1	ITEM 5 WAS WA-106-5					
ISSUE	ITEM	CHANGED FROM	DATE	CN. NO.	DRAFTS	CHECKER	ENG. APP.
TOLERANCES			SCALE: ff				
ALL OTHERS	DEC. DIM. ±	DRILL, PUNCH, COMMERCIAL STOCK					
	FRAC. DIM. ±	SIZES AND MANUFACTURERS					
	ANGULAR DIM. ±	TOLERANCES ARE NOT INCLUDED.					
	1	TAC-1	132	A-723	1-25-54		
	AMT PER UNIT	MODEL	PROJECT NO.	ASS'Y. NO.	DATE		

USED ON

A-701 A