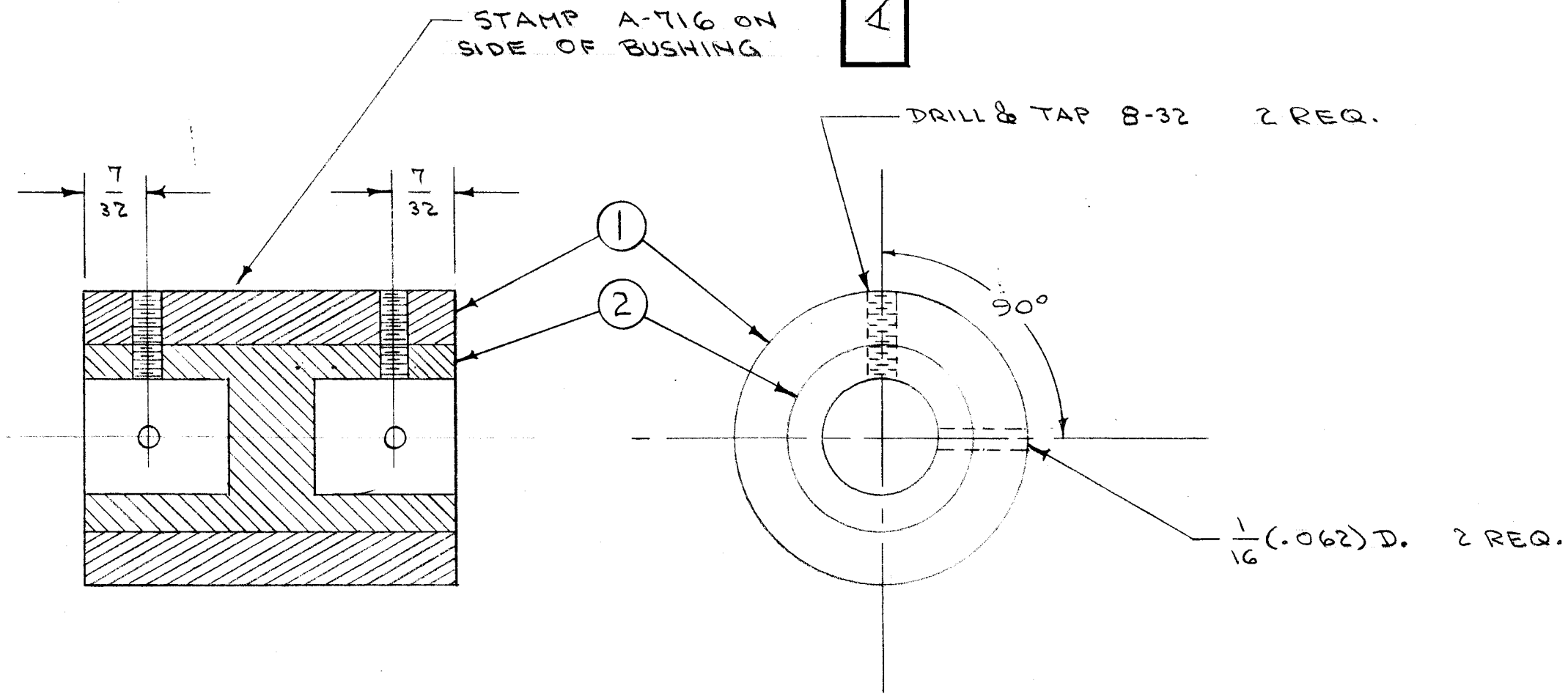


IF IT IS FOUND DESIRABLE TO CHANGE ANY TOLERANCE OR OTHER DETAIL SPECIFIED ON THIS DRAWING NOTIFY THE PURCHASER PROMPTLY.

MAXIMUM ALLOWABLE TOLERANCES HAVE BEEN DETERMINED AND DEVIATIONS WILL BE CAUSE FOR REJECTION. REMOVE ALL BURRS AND SHARP EDGES

A-716 A



STEP 1 - PRESS FIT ITEM 2 INTO ITEM 1.
STEP 2 - DRILL AS SHOWN.

1	2	PX-230	INSULATOR, CON. BUSHING	
1	1	PX-196	CONNECTING BUSHING	
REQ.	ITEM	PART NO.	DESCRIPTION	SYMBOL
#			THE TECHNICAL MATERIEL CORP. MAMARONECK, NEW YORK	
STOCK SIZE				
#		#	CONNECTING BUSHING ASSY.	
MATERIAL		WEIGHT PER PC.	TAC-1	
#		#	C.D.D. 1-4-54	
TYPE & TEMPER			APB	WOC
#			DRAWN	ELEC. DES. APP.
#			HEAT TREAT. SPEC.	MECH. DES. APP.
#			FINISH & SPEC. NO.	
JALCO			CHECKED	FINAL APPROVAL
			A-716	A

A	1	HOLES ADDED		1	CDD	JALCO	WOC
ISSUE	ITEM	CHANGED FROM	DATE	CN. NO.	DRAFTS	CHECKER	ENG. APP.
TOLERANCES			SCALE: 1				
ALL OTHERS	DEC. DIM. ± 1/64 FRAC. DIM. ± 1/64 ANGULAR DIM. ± 10		DRILL, PUNCH, COMMERCIAL STOCK SIZES AND MANUFACTURERS TOLERANCES ARE NOT INCLUDED.				

1	TAC-1	132	A-719	1-26-54
REQ PER UNIT	MODEL	PROJECT NO.	ASS'Y. NO.	DATE
USED ON				